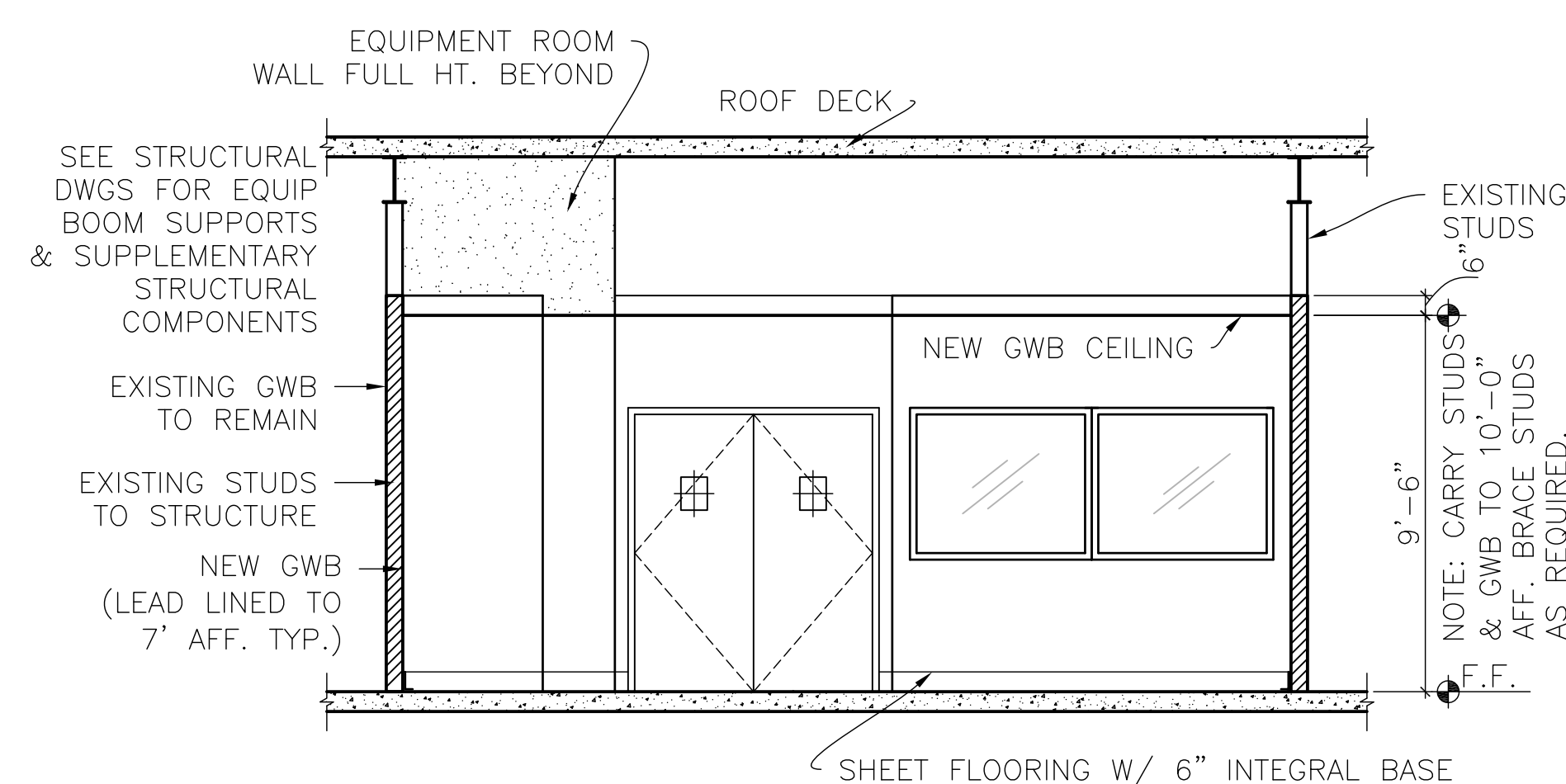
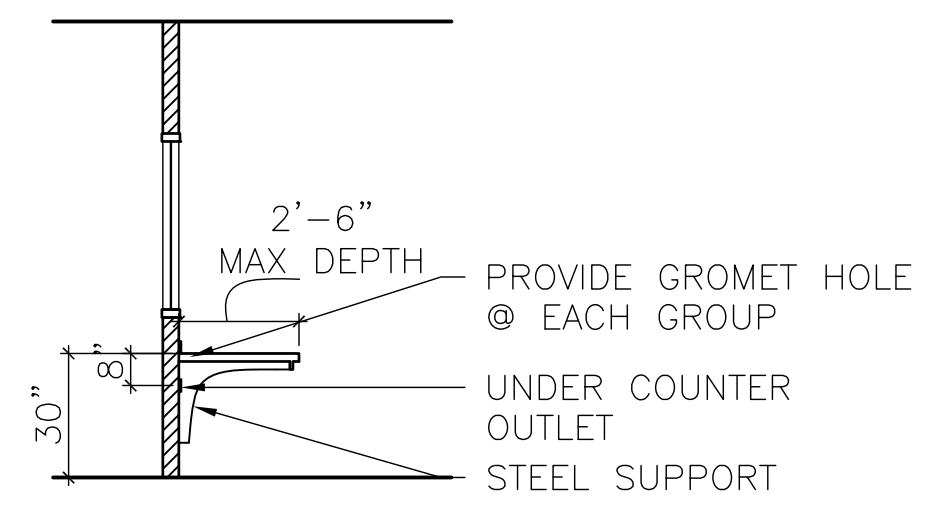


1 SECTION @ O.R.  
1/4" = 1' - 0"



2 SECTION @ O.R.  
1/4" = 1' - 0"



3 CONTROL ROOM WORK STATION SECTION  
1/4" = 1' - 0"

ROOM FINISH SCHEDULE										
NUMBER	NAME	BASE FINISH	FLOOR FINISH	WALL FINISH				CEILING		NOTES
				PLAN NORTH	PLAN SOUTH	PLAN EAST	PLAN WEST	FINISH	HEIGHT A.F.F.	
1	EQUIPMENT ROOM	VB	SEALED CONCRETE	SC (EPOXY PAINT)	SC	SC	SC	NO CEILING	NO CEILING	
2	CONTROL ROOM	INTEGRAL	EPOXY RESINOUS FLOORING	SC	SC	SC	SC	GWB/SC	8'-0"	
3	NEW O.R.	INTEGRAL	EPOXY RESINOUS FLOORING	SC	SC	SC	SC	GWB/SC	9'-6"	

FINAL SUBMITTAL  
APPROVED FOR CONSTRUCTION

<div>Revisions:</div> <div>Date</div>	<div>CONSULTANTS:</div>	<div>ARCHITECT-OF-RECORD THOMAS H. GYLLSTROM FL. REG. NO. 9098</div>	<div>ARCHITECT/ENGINEERS:</div> <div><b>AKEA</b> INC. 3603 NW 98th Street, Suite B Gainesville, FL 32606 Phone: (352) 474-6124 Fax: (352) 474-6324 COA: FL #26693 AKEA Project No. 072-14</div>	<div>Drawing Title</div> <div>SECTIONS &amp; FINISH SCHEDULE</div>	<div>Project Title</div> <div>NEW SURGICAL 9TH OR SUITE</div>	<div>Project Number</div> <div>508-14-105</div>	<div>Office of Construction and Facilities Management</div> <div> Department of Veterans Affairs</div>
				<div>Approved: Project Director</div>	<div>Location</div> <div>Atlanta, Georgia</div>	<div>Building Number</div>	
				<div>Date</div> <div>APRIL 30, 2014</div>	<div>Checked</div> <div>THG</div>	<div>Drawn</div> <div>CLN</div>	