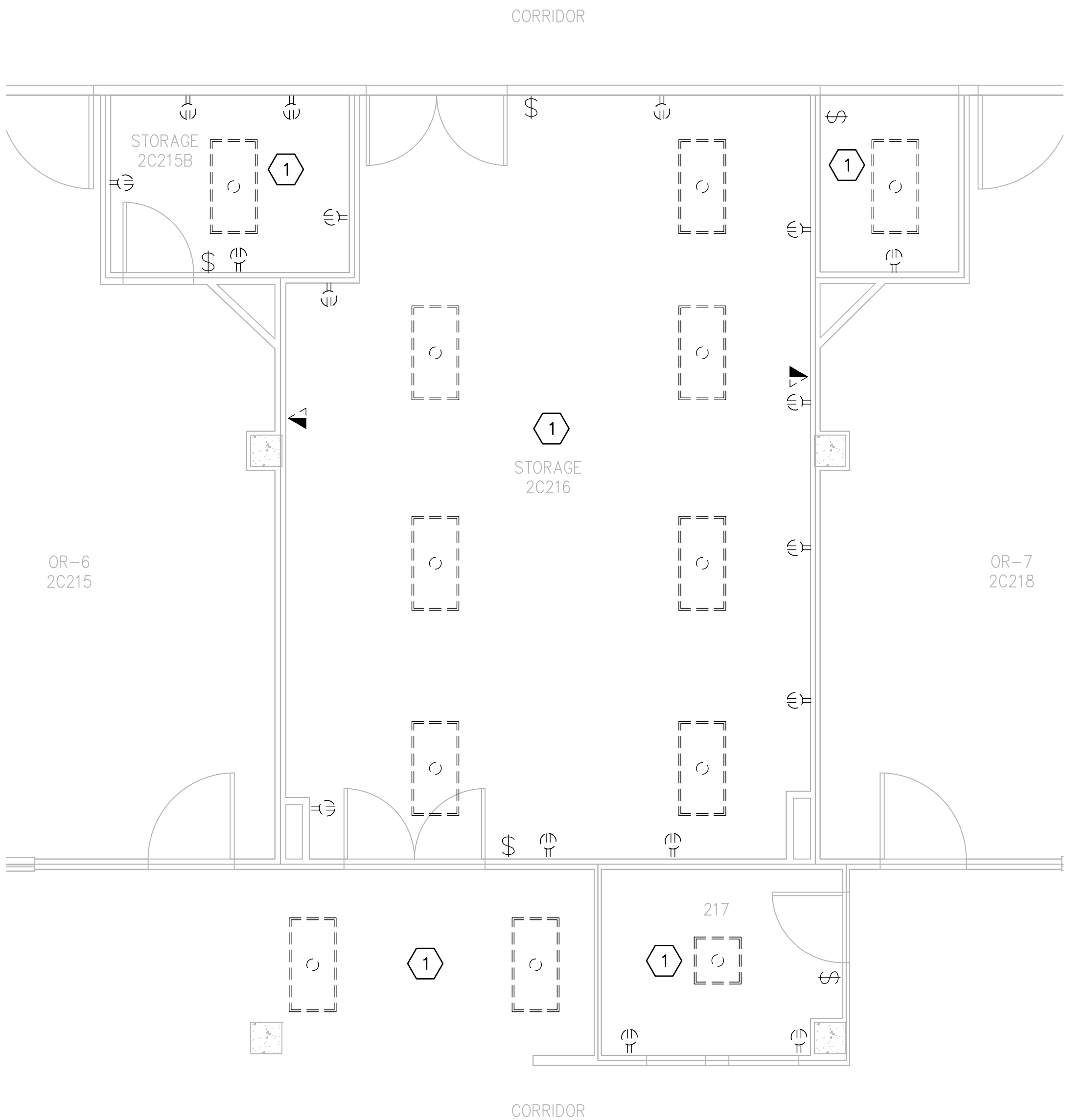


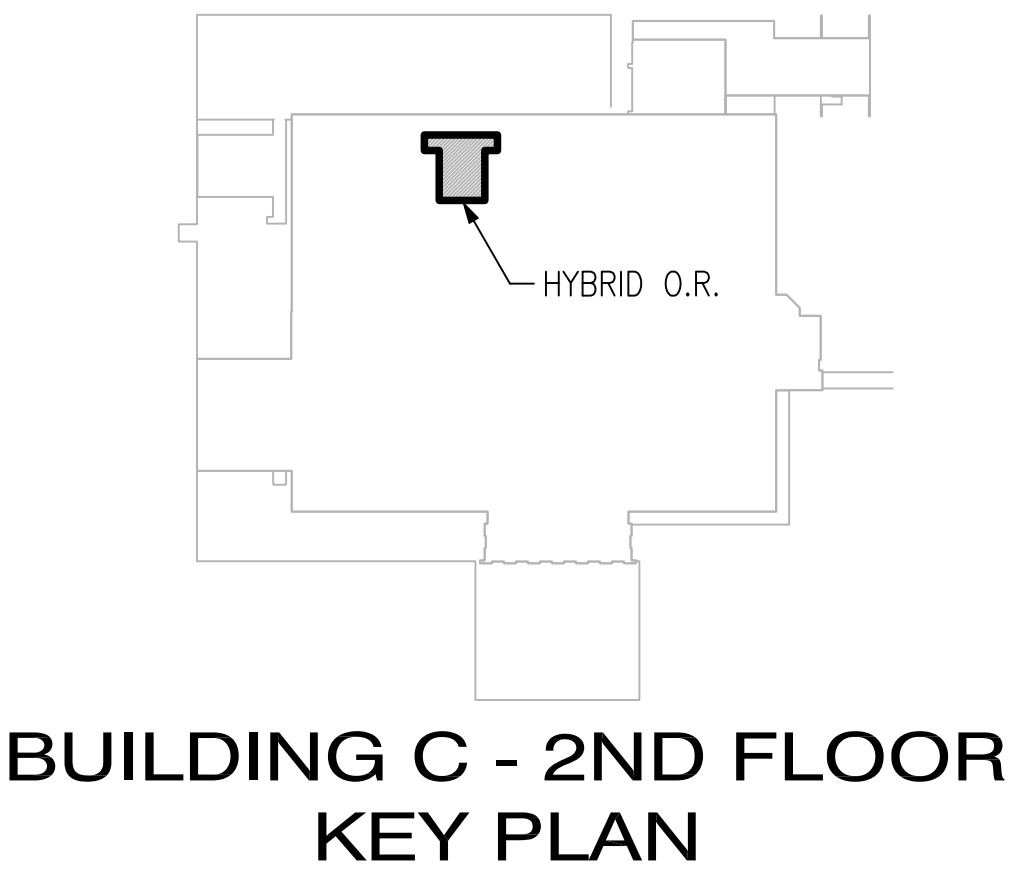
three inches = one foot
one and one half inches = one foot
one inch = one foot
three quarters inch = one foot
one half inch = one foot
three eighths inch = one foot
one quarter inch = one foot
one eighth inch = one foot

DEMOLITION NOTES


- THE CONTRACTOR SHALL NOT CONSIDER DEMOLITION AND ALTERATION NOTES TO BE ALL-INCLUSIVE. IT IS THE CONTRACTOR'S RESPONSIBILITY TO INSPECT AND ASSESS EACH AREA AND TO FULFILL THE INTENT OF THE DESIGN INDICATED BY THE CONTRACT DOCUMENTS. REFER TO SPECIFICATION SECTION 010000 - GENERAL REQUIREMENTS AND THE VA MEDICAL CENTER FOR WORK RESTRICTIONS. CONTRACTOR SHALL COORDINATE DEMOLITION DRAWINGS AND NOTES WITH ALL DISCIPLINES INVOLVED. PATCH OR REBUILD ANY AREAS TO REMAIN THAT HAVE BEEN DAMAGED OR DISTURBED BY DEMOLITION.
- REMOVE ALL EXISTING CONSTRUCTIONS AND FINISHES NECESSARY FOR THE COMPLETION OF THE WORK AS DEPICTED ON THE DRAWINGS. INCLUDING BUT NOT LIMITED TO, ITEMS SHOWN ON THE PLANS. NECESSARY DISCONNECTS AND ALTERATIONS TO EXISTING MECHANICAL AND ELECTRICAL SYSTEMS SHALL BE INCLUDED. PATCH AS REQUIRED ALL CONSTRUCTIONS TO REMAIN IN ACCORDANCE WITH THE CONTRACT DRAWINGS. WHERE CONTRACTOR IS DESIGNATED TO MAKE REMOVALS, DISPOSITION OF MATERIALS IS THE RESPONSIBILITY OF THE CONTRACTOR. VERIFY WITH VA MEDICAL CENTER, THE DISPOSITION AND REMOVAL OF ANY COMPONENTS OF SALVAGEABLE VALUE.
- THE CONTRACTOR SHALL VERIFY ALL CONDITIONS AND DIMENSIONS WITHIN THE CONTRACT LIMITS AND NOTIFY THE COR IMMEDIATELY IN WRITING OF ANY DEVIATION FROM CONTRACT DOCUMENTS NECESSITATED BY FIELD CONDITIONS OR ITEMS NOT DEPICTED ON THE DRAWINGS.
- ALL REMOVALS AND SALVAGE, UNLESS SPECIFICALLY NOTED OR REQUESTED BY THE VA MEDICAL CENTER SHALL BECOME THE PROPERTY OF THE CONTRACTOR.
- ANY FLOOR OPENINGS SHALL BE PROTECTED AND SECURED DURING DEMOLITION AND CONSTRUCTION.
- PATCH ALL DAMAGED FINISHES TO MATCH EXISTING, INCLUDING BUT NOT LIMITED TO, GYPSUM BOARD, PLASTER, ACOUSTIC SYSTEMS, WOOD TRIM, COVERS, BASE, PANELS, RAILS AND WAINSCOT. FOR ALL SURFACES SCHEDULED TO REMAIN, PATCH AND MATCH SURFACES DISTURBED BY DEMOLITION OR REMOVAL OF EQUIPMENT OR UTILITIES. INSTALL PATCHING TO MATCH ADJACENT WORK IN FINISH, STRUCTURAL QUALITIES, COURSING OF MASONRY, AND OTHER CHARACTERISTICS. VERIFY MATCH OF NEW FINISH MATERIALS TO EXISTING IN COLOR, TEXTURE, THICKNESS, CUT, ETC., TO SATISFACTION OF VA MEDICAL CENTER PRIOR TO INSTALLATION. PROVIDE OTHER MATERIALS TO MATCH EXISTING WHEN REQUIRED (TO BE APPROVED BY VA MEDICAL CENTER). PATCH EXISTING WALLS GYPSUM DRYWALL OR PLASTER TO MATCH EXISTING OF SUFFICIENT THICKNESS TO MAINTAIN UNIFORM WALL THICKNESS. ALL EXPOSED PORTIONS OF WALL SHALL BE FINISHED WITH THREE (3) COATS OF SPACKLING, SANDED AND LEFT IN A PAINT READY CONDITION. PATCH SURFACES TO COMPLY WITH FIRE RATINGS, SMOKE-TIGHT RATINGS, ACOUSTICAL CRITERIA AND OTHER PERFORMANCE CRITERIA INDICATED.
- MAINTAIN ACCESS TO EXITS AND EXIT STAIRS AT ALL TIMES. FIRE ALARM AND SMOKE DETECTION SYSTEM SHALL REMAIN OPERATIONAL AT ALL TIMES. PROTECT SMOKE DETECTORS AS REQUIRED AND IN CONFORMANCE WITH CODES AND LOCAL AUTHORITIES HAVING JURISDICTION. REFER TO MEDICAL CENTER CONTRACTOR HANDBOOK FOR WORK RESTRICTIONS.
- ALL DEMOLITION SHALL BE PERFORMED IN A SAFE AND ACCEPTABLE MANNER TO ALL AUTHORITIES HAVING JURISDICTION AND THE VA MEDICAL CENTER. A FIRE WATCH SHALL BE PROVIDED IF ANY HAZARDOUS SITUATIONS ARE THOUGHT TO BE PRESENT OR POSSIBLE. COMPLY WITH GOVERNING REGULATIONS PERTAINING TO ENVIRONMENTAL PROTECTION FOR POLLUTION CONTROL. THOROUGHLY CLEAN ADJACENT AREAS OF DUST, DIRT AND DEBRIS CAUSED BY DEMOLITION WORK. BEFORE NEW WORK BEGINS, RETURN ADJACENT AREAS TO CONDITION FOUND PRIOR TO START OF DEMOLITION WORK.
- ALL WORK SHALL BE DONE IN PROTECTED SPACE. NO DUST OR DIRT SHALL TRAVEL FROM CONSTRUCTION AREA TO ADJACENT AREAS. TEMPORARY DUST PROTECTION SHALL BE ERECTED PRIOR TO START OF WORK. CONTRACTORS SHALL REVIEW PROVISIONS TO CONTROL AIRBORNE DUST WITH INFECTION CONTROL DIRECTOR, FACILITIES-BUILDING MANAGER AND CONSTRUCTION MANAGER. COORDINATE ADDITIONAL FILTRATION OF EXTERIOR AIR INTAKES TO MECHANICAL SYSTEMS. CONTRACTOR SHALL ASSIGN A PERSON(S) TO CLEAN ALL CONSTRUCTION AND COMMON AREAS, USED BY THE CONTRACTOR AND STAFF, DURING THE THE CONSTRUCTION HOURS.
- IF HAZARDOUS MATERIAL IS ENCOUNTERED OR SUSPECTED TO BE PRESENT, CONTRACTOR SHALL STOP WORK AND INFORM VA MEDICAL CENTER IMMEDIATELY IN WRITING OF ANY HAZARDOUS MATERIAL ENCOUNTERED OR THOUGHT TO BE HAZARDOUS MATERIAL. THE VA MEDICAL CENTER, AFTER RECEIVING WRITTEN NOTICE SHALL INSTRUCT CONTRACTOR ON HOW TO PROCEED. THIS INCLUDES, BUT IS NOT LIMITED TO PAINT THAT IS SUSPECT ON PIPING, CONDUIT, DUCTWORK OR ADJACENT SURFACES.



1 ELECTRICAL DEMOLITION PLAN
SCALE: 1/4" = 1' - 0"



FINAL SUBMITTAL
APPROVED FOR CONSTRUCTION

CONSULTANTS:		ENGINEER-OF-RECORD RANDALL A. HENSLEY	GA. P.E. NO. 18607	ARCHITECT/ENGINEERS:		Drawing Title ELECTRICAL DEMOLITION PLAN	Project Title NEW SURGICAL 9TH OR SUITE	Project Number 508-14-105	Office of Construction and Facilities Management 
						Approved: Project Director	Location Atlanta, Georgia	Building Number	
Revisions:						Date APRIL 30, 2014	Checked RAH	Drawn KLL	
								E100	26 of 36