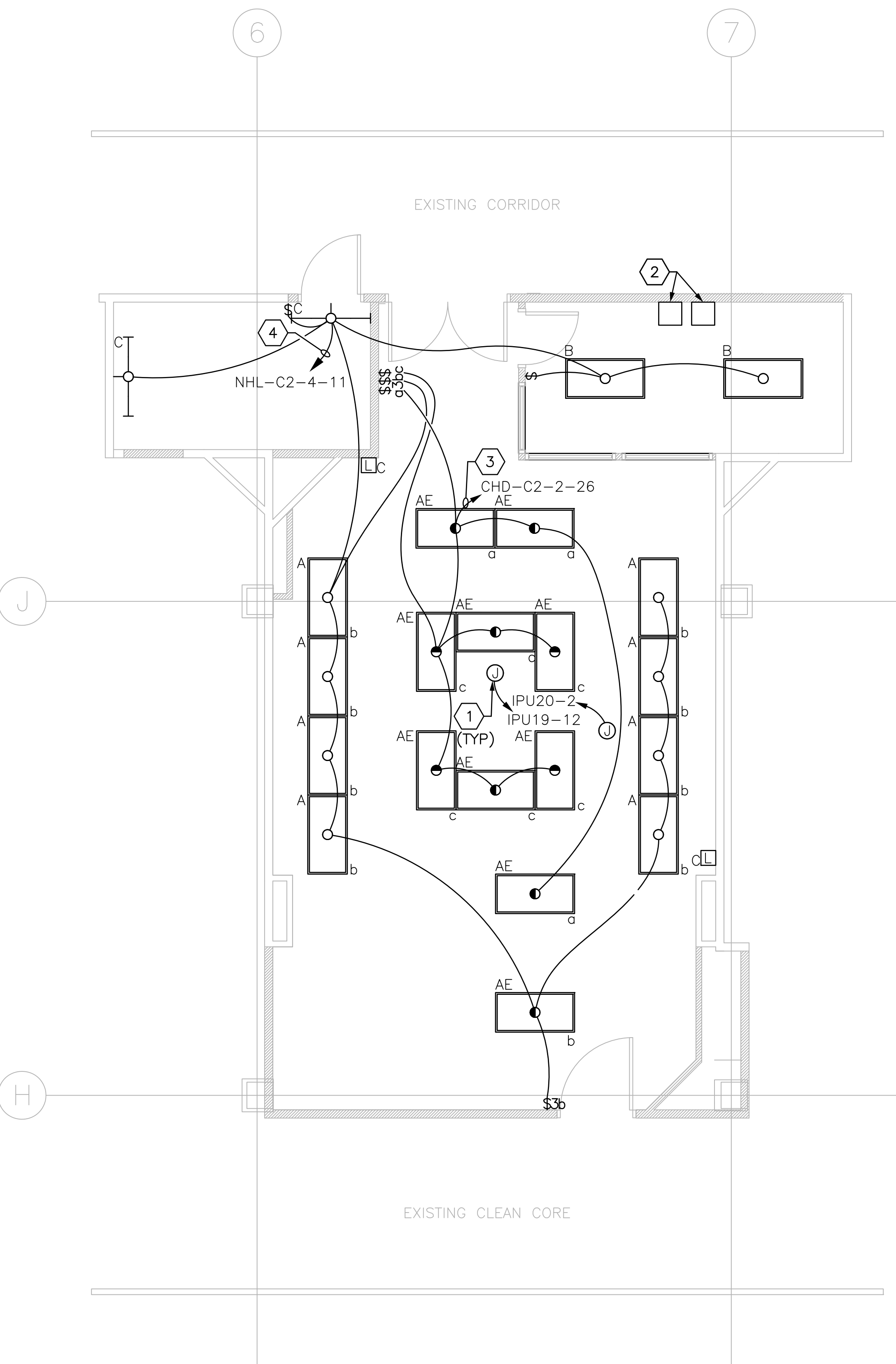


three eighths inch = one foot
one eighth inch = one foot
one quarter inch = one foot
three quarters inch = one foot
one inch = one foot
one and one half inches = one foot
three inches = one foot
six inches = one foot



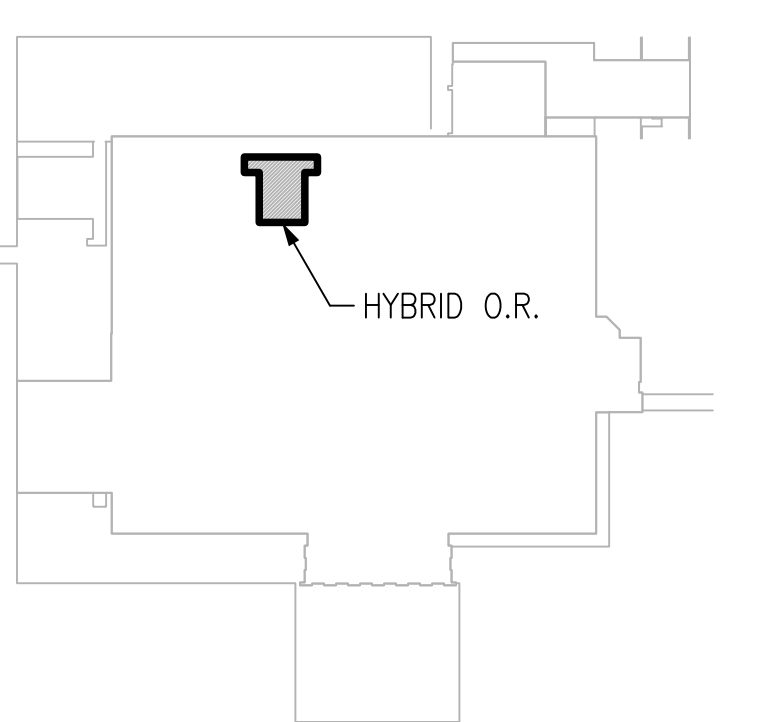
1 ELECTRICAL LIGHTING PLAN
SCALE: 1/4" = 1' - 0"

SHEET NOTES

- A. EACH BRANCH CIRCUIT SHALL BE PROVIDED WITH A DEDICATED NEUTRAL CONDUCTOR (NO SHARED NEUTRALS).
- B. LIFE SAFETY AND CRITICAL BRANCH WIRING SHALL BE KEPT INDEPENDENT FROM EACH OTHER AND ALL OTHER SYSTEMS PER NEC 517.30.

SHEET KEYNOTES

1. PROVIDE J-BOX ABOVE CEILING FOR CONNECTION TO CEILING MOUNTED SURGICAL LIGHTING.
2. SURGICAL LIGHTING POWER SUPPLY. PROVIDE CONNECTION TO IPU PANELS, SURGICAL LIGHT FIXTURES AND WALL MOUNTED CONTROLLERS.
3. UNLESS A SPARE BREAKER IS AVAILABLE, PROVIDE A NEW 20A 1P BREAKER IN EXISTING CRITICAL PANEL CHD-C2-2 (HC22) TO MATCH EXISTING.
4. UNLESS A SPARE BREAKER IS AVAILABLE, PROVIDE A NEW 20A 1P BREAKER IN EXISTING NORMAL PANEL NHL-C2-4 (HN24) TO MATCH EXISTING.



**BUILDING C - 2ND FLOOR
KEY PLAN**

FINAL SUBMITTAL
APPROVED FOR CONSTRUCTION

		CONSULTANTS:	<div>ENGINEER-OF-RECORD RANDALL A. HENSLEY</div> <div>GA. P.E. NO. 18607</div>	ARCHITECT/ENGINEERS: <div><div>AKEA</div><div>INC. 3603 NW 98th Street, Suite B Gainesville, FL 32606 Phone: (352) 474-6124 Fax: (352) 474-6324 COA: FL #26693 AKEA Project No. 072-14</div></div>	Drawing Title		Project Title		Project Number 508-14-105		Office of Construction and Facilities Management
					ELECTRICAL LIGHTING PLAN		NEW SURGICAL 9TH OR SUITE		Building Number		
					Approved: Project Director		Location Atlanta, Georgia		Drawing Number E200 27 of 36		
							Date APRIL 30, 2014		Checked RAH	Drawn KLL	
Revisions:	Date	<div>Department of Veterans Affairs</div>									