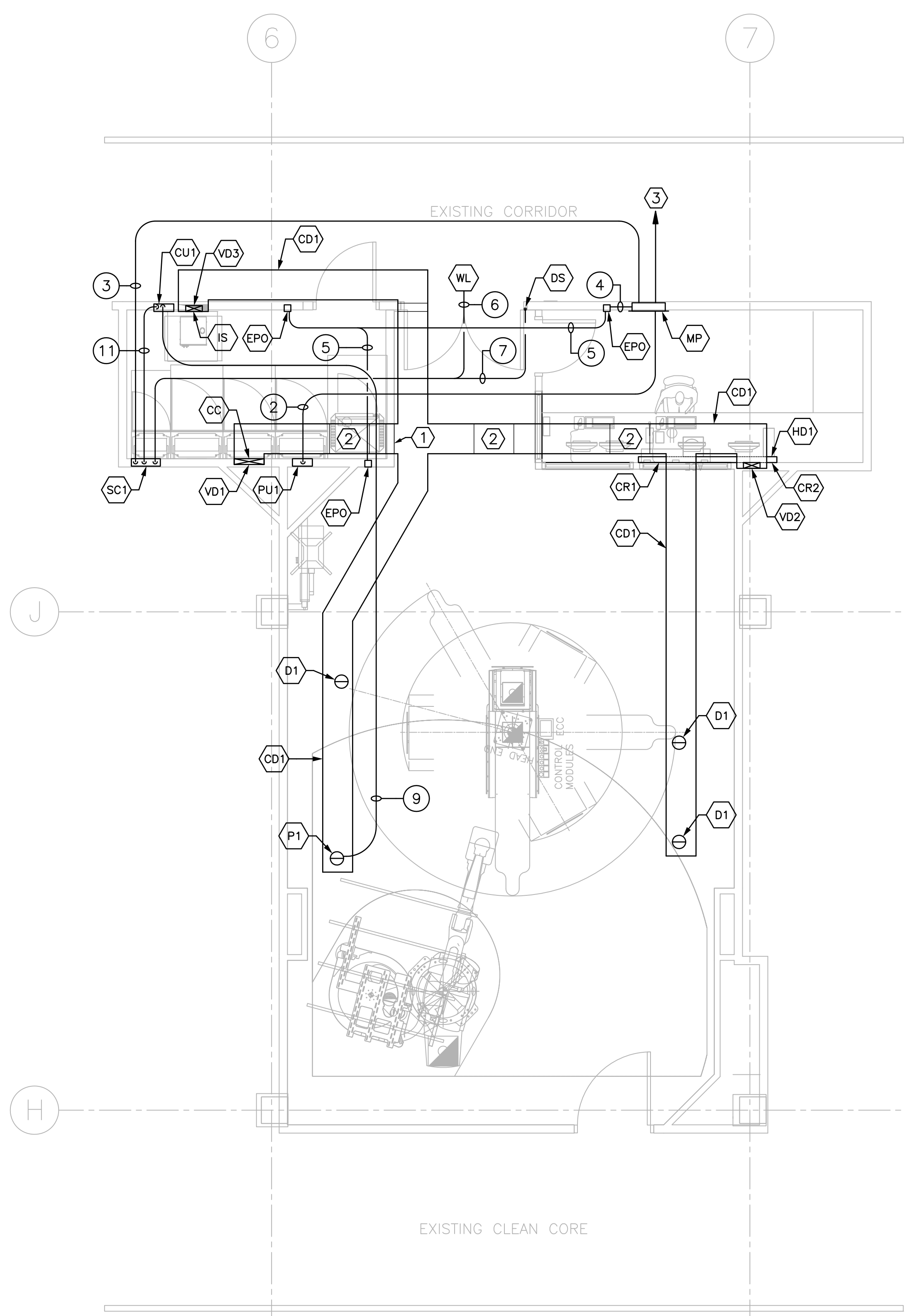
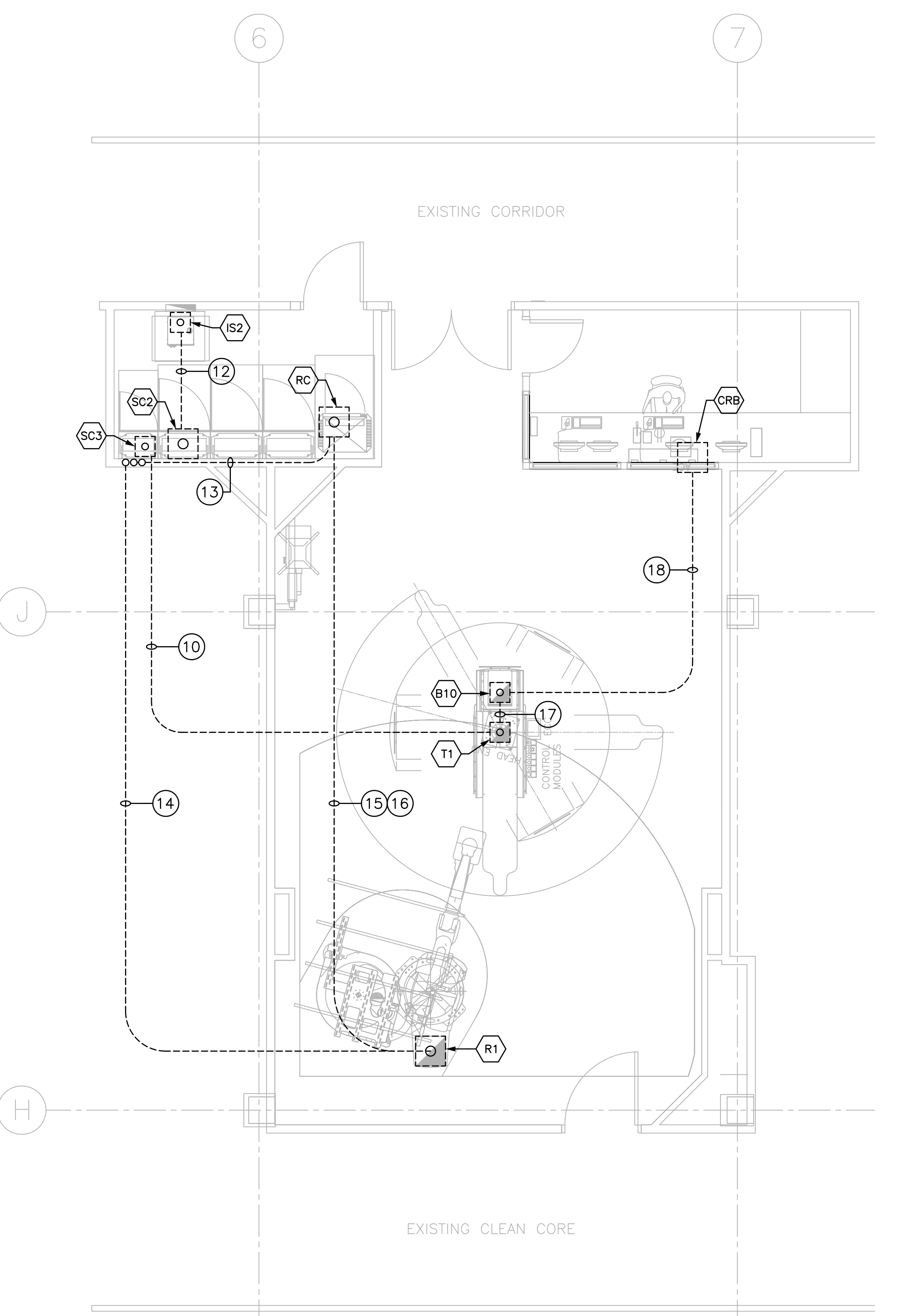


three inches = one foot
one and one half inches = one foot
one inch = one foot
one half inch = one foot
three quarters inch = one foot
three eighths inch = one foot
one quarter inch = one foot
one eighth inch = one foot



1 EQUIPMENT RACEWAY ABOVE FLOOR
SCALE: 1/4" = 1' - 0"



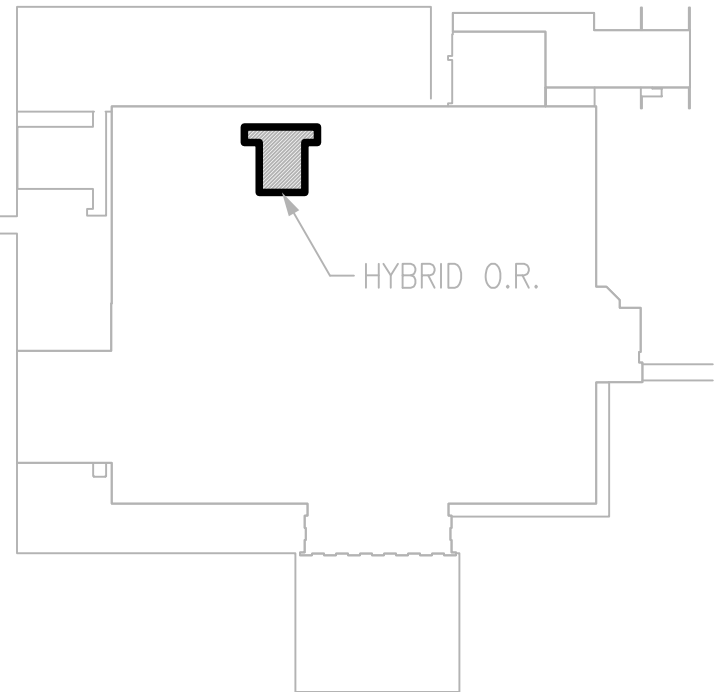
2 EQUIPMENT RACEWAY BELOW FLOOR
SCALE: 1/4" = 1' - 0"

SYM.	DESCRIPTION
B10	PB MTD. BFF WITH REMOVABLE BOTTOM COVER. PROVIDE 4" SLEEVE FROM BOX TO FLUSH WITH FINISHED FLOOR. PROVIDE SS WATERPROOF PLATE ON TOP OF CORED OPENING IN FLOOR.
CC	18"x8" BUSHED OPENING IN "VD1" COVER AT FLOOR LINE.
CR1	3" S BUSHED OPENING IN TOP OF "HD1" FOR CONTROL ROOM DISTRIBUTOR.
CR2	3" S BUSHED OPENING IN TOP OF "HD1" FOR MEASURING STATION.
CRB	PB MTD. BFF WITH REMOVABLE BOTTOM COVER. FOR EACH CONDUIT CONNECTION, PROVIDE A FLOOR SLEEVE OF THE SAME SIZE CONNECTING BOX TO RACEWAY "HD1"
CU1	PB MTD. FLUSH IN FINISHED WALL AT FLOOR LINE. PROVIDE BOX WITH REMOVABLE FRONT COVER AND (1) 4" BUSHING IN CENTER OF REMOVABLE COVER FOR CABLE EXIST. FOR COOLING UNIT.
D1	6" S BUSHED OPENING IN BOTTOM OF CEILING DUCT "CD1". PROVIDE 4" SLEEVE EXTENDING FROM DUCT TO FLUSH WITH FINISHED CEILING. PROVIDED BUSHING AT CEILING LINE. FOR EXAM ROOM MONITOR(S).
DS	DOOR SWITCH.
EPO	EMERGENCY POWER OFF BUTTONS FOR SHUNT TRIP BREAKERS. EPO'S MUST PREVENT RESETING OF CIRCUIT BREAKERS WHEN IN OFF POSITION. EPO'S MUST BE RECESSED OR SHIELDED.
IS	4" S BUSHED OPENING IN VERTICAL DUCT "VD2" COVER AT FLOOR LINE. FOR IMAGE SYSTEM.
IS2	PB MTD. BFF WITH REMOVABLE BOTTOM COVER. PROVIDE 4" SLEEVE FROM BOX TO FLUSH WITH FINISHED FLOOR WITH BUSHING AT FLOOR LINE. FOR IMAGE SYSTEM.
P1	8" S BUSHED OPENING IN BOTTOM OF CEILING DUCT "CD1". FOR C-ARM.
PU1	PB MTD. FLUSH IN FINISHED WALL AT FLOOR LINE. PROVIDE BOX WITH REMOVABLE FRONT COVER WITH 4" S BUSHED OPENING AT BOTTOM OF COVER. FOR GENERATOR.
R1	PB MTD. BFF WITH REMOVABLE BOTTOM COVER. PROVIDE 6" S SLEEVE FROM BOX TO FLUSH WITH FINISHED FLOOR WITH BUSHING AT FLOOR LINE. FOR FLOOR STAND.
RC	PB MTD. BFF WITH REMOVABLE BOTTOM COVER. PROVIDE 6" S SLEEVE FROM BOX TO FLUSH WITH FINISHED FLOOR WITH BUSHING AT FLOOR LINE. FOR FLOOR STAND CABINET.
SC1	PB MTD. FLUSH IN FINISHED WALL AT FLOOR LINE. PROVIDE BOX WITH REMOVABLE FRONT COVER WITH 4" S BUSHED OPENING AT BOTTOM OF COVER. FOR SYSTEM CABINET.
SC2	PB MTD. BFF WITH REMOVABLE BOTTOM COVER. PROVIDE (1) 6" S SLEEVE FROM BOX TO FLUSH WITH FINISHED FLOOR WITH BUSHINGS AT FLOOR LINE. FOR SYSTEM CABINET.
SC3	PB MTD. BFF WITH REMOVABLE BOTTOM COVER. PROVIDE (1) 4" S SLEEVE FROM BOX TO FLUSH WITH FINISHED FLOOR WITH BUSHINGS AT FLOOR LINE. FOR SYSTEM CABINET.
T1	PB MTD. BFF WITH REMOVABLE BOTTOM COVER. PROVIDE 4" S SLEEVE FROM BOX TO FLUSH WITH FINISHED FLOOR WITH BUSHING AT FLOOR LINE. FOR TABLE.
WL	WARNING LIGHT TO INDICATE "X-RAY ON" MTD. ABOVE ENTRY DOOR.
CD1	3-1/2"x18" CEILING DUCT MTD. AFC. PROVIDE DUCT WITH REMOVABLE TOP COVER AND OPENINGS AS SPECIFIED OR REQUIRED. CONNECT TO VERTICAL DUCT AS SHOWN.
HD1	3-1/2"x10" HORIZONTAL DUCT MTD. ON FINISHED WALL AT FLOOR LINE. PROVIDE DUCT WITH REMOVABLE FRONT COVER. CONNECT TO VERTICAL DUCT "VD2".
VD1	3-1/2"x18" VERTICAL DUCT MTD. FLUSH IN FINISHED WALL. BEGIN DUCT AT FLOOR LINE AND EXTEND UP WALL AFC.
VD2	3-1/2"x10" VERTICAL DUCT MTD. FLUSH IN FINISHED WALL. BEGIN DUCT AT FLOOR LINE AND EXTEND UP WALL ABOVE FINISHED CEILING.
VD3	3-1/2"x10" VERTICAL DUCT MTD. FLUSH IN FINISHED WALL. BEGIN DUCT AT FLOOR LINE AND EXTEND UP WALL ABOVE FINISHED CEILING.
2	POWER SUPPLY TO "PU1". SEE RISER FOR CONDUIT SIZE.
3	POWER SUPPLY TO "SC1". SEE RISER FOR CONDUIT SIZE.
4	3/4"C. FROM POWER SUPPLY BREAKER TO "EPO".
5	3/4"C. FROM "EPO" TO "EPO".
6	3/4"C. FROM "SC1" TO "WL".
7	3/4"C. FROM "SC1" TO "DS".
9	2-1/2"C. FROM "P1" TO "CU1".
10	(2) 3"C. FROM "SC3" TO "T1" UNDER FLOOR.
11	2"C. FROM "VD1" ("SC1") TO "CU1".
12	3"C. FROM "SC2" TO "IS2" UNDER FLOOR.
13	(2) 4"C. FROM "SC2" ("SC1") TO "RC" UNDER FLOOR.
14	4"C. FROM "SC2" ("SC1") TO "R1" UNDER FLOOR.
15	6"C. FROM "RC" TO "R1" UNDER FLOOR.
16	3"C. FROM "RC" TO "R1" UNDER FLOOR.
17	3"C. FROM "T1" TO "B10" UNDER FLOOR.
18	3"C. FROM "CRB" TO "B10" UNDER FLOOR. FOR PATIENT MONITORING.

SHEET NOTES

A. PROPOSED EQUIPMENT RACEWAY ROUTING IS SHOWN ACCORDING TO BASIS OF DESIGN X-RAY EQUIPMENT. EXACT RACEWAY ROUTING ABOVE AND BELOW FLOOR SHALL BE COORDINATED WITH SELECTED EQUIPMENT VENDOR, HVAC CONTRACTOR, AND ELECTRICAL CONTRACTOR.

- SHEET KEYNOTES
- SEAL CABLE DUCT INTERNALLY AND EXTERNALLY AT WALL PENETRATION.
 - PROVIDE OFFSET IN CABLE DUCT TO COORDINATE WITH HVAC WORK.
 - HOMERUN TO UPS POWER SUPPLY.



BUILDING C - 2ND FLOOR
KEY PLAN

FINAL SUBMITTAL
APPROVED FOR CONSTRUCTION

CONSULTANTS:		ENGINEER-OF-RECORD RANDALL A. HENSLEY	GA. P.E. NO. 18607	ARCHITECT/ENGINEERS: AKEA INC. 3603 NW 98th Street, Suite B Gainesville, FL 32606 Phone: (352) 474-6124 Fax: (352) 474-6324 COA: FL #26693 AKEA Project No. 072-14	Drawing Title EQUIPMENT RACEWAY PLANS - ABOVE AND BELOW FLOOR	Project Title NEW SURGICAL 9TH OR SUITE	Project Number 508-14-105	Office of Construction and Facilities Management Department of Veterans Affairs	
Revisions:					Approved: Project Director	Location Atlanta, Georgia	Building Number		Drawing Number E202
Date						Date APRIL 30, 2014	Checked RAH	Drawn CJF	29 of 36