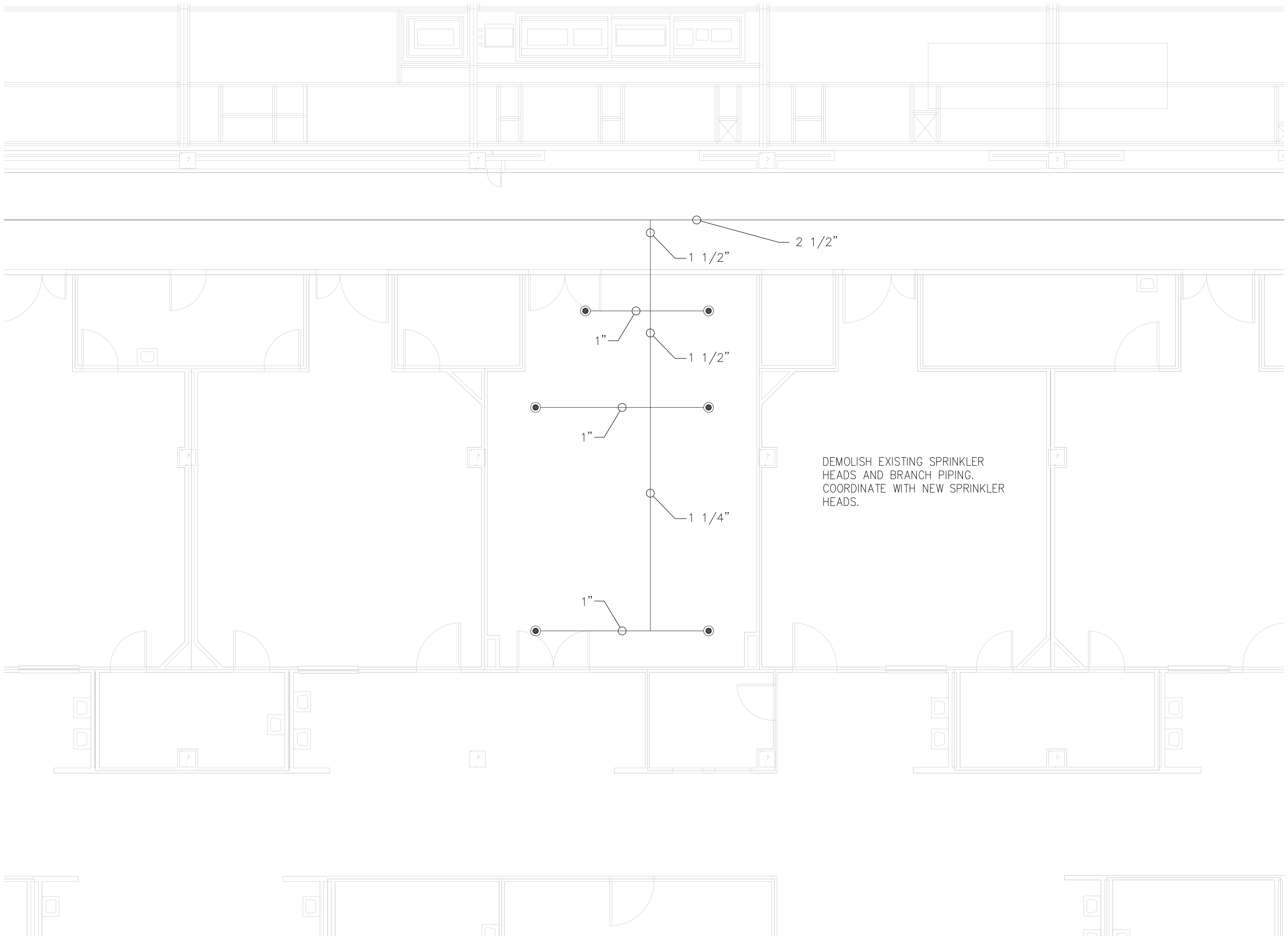


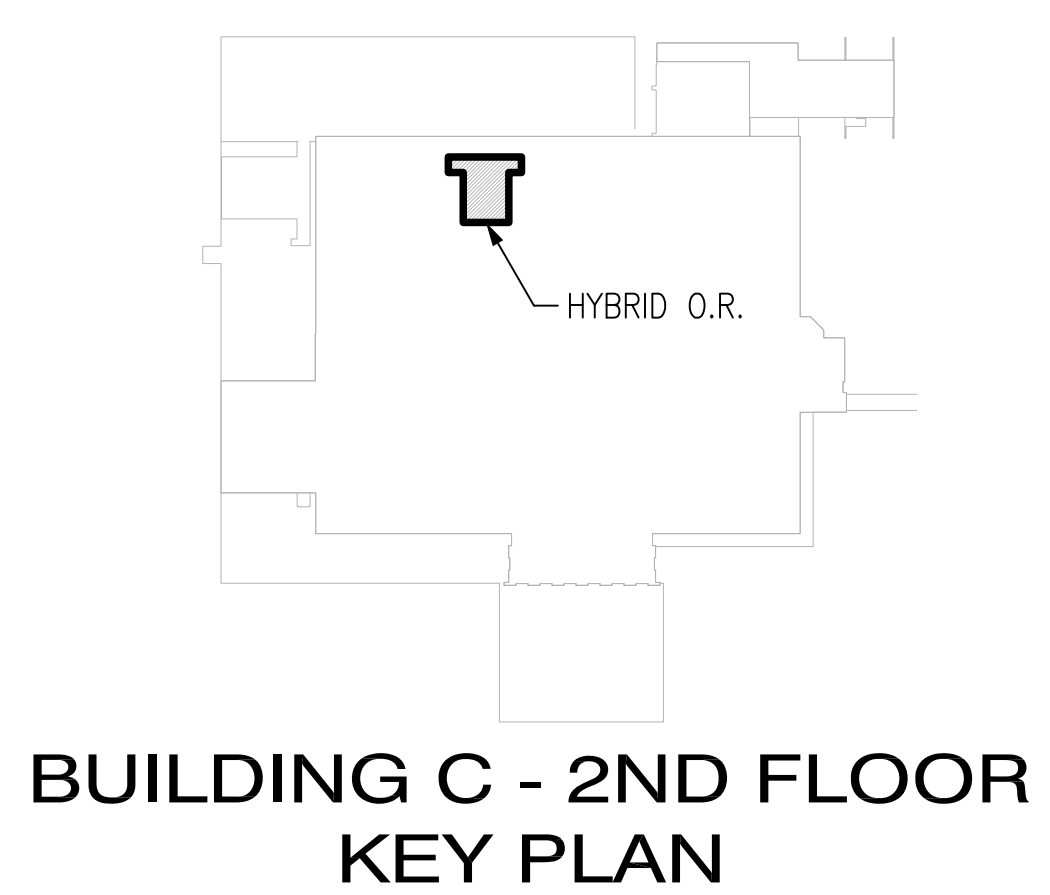
1  
2  
3  
4  
5  
6  
7  
8  
9

three inches = one foot  
one and one half inches = one foot  
one inch = one foot  
three quarters inch = one foot  
one half inch = one foot  
three eighths inch = one foot  
one quarter inch = one foot  
one eighth inch = one foot

16  
8  
4  
2  
1  
0  
1  
2  
3  
4  
5  
6  
7  
8  
9  
10  
11  
12  
13  
14  
15  
16  
17  
18  
19  
20  
21  
22  
23  
24  
25  
26  
27  
28  
29  
30  
31  
32  
33  
34  
35  
36  
37  
38  
39  
40  
41  
42  
43  
44  
45  
46  
47  
48  
49  
50  
51  
52  
53  
54  
55  
56  
57  
58  
59  
60  
61  
62  
63  
64  
65  
66  
67  
68  
69  
70  
71  
72  
73  
74  
75  
76  
77  
78  
79  
80  
81  
82  
83  
84  
85  
86  
87  
88  
89  
90  
91  
92  
93  
94  
95  
96  
97  
98  
99  
100



1 FIRE PROTECTION PLAN - DEMOLITION  
SCALE: 1/8" = 1' - 0"



FINAL SUBMITTAL  
APPROVED FOR CONSTRUCTION

		CONSULTANTS:		ENGINEER-OF-RECORD STEPHEN T. STEFFE	GA. P.E. NO. 24897	ARCHITECT/ENGINEERS: <div>AKEA INC. 3603 NW 98th Street, Suite B Gainesville, FL 32606 Phone: (352) 474-6124 Fax: (352) 474-6324 COA: FL #26693 AKEA Project No. 072-14</div>	Drawing Title		Project Title		Project Number 508-14-105		Office of Construction and Facilities Management
							FIRE SPRINKLER - DEMOLITION		NEW SURGICAL 9TH OR SUITE		Building Number		
							Approved: Project Director		Location Atlanta, Georgia		Drawing Number		
											FP100		
											35 of 36		
Revisions:	Date												