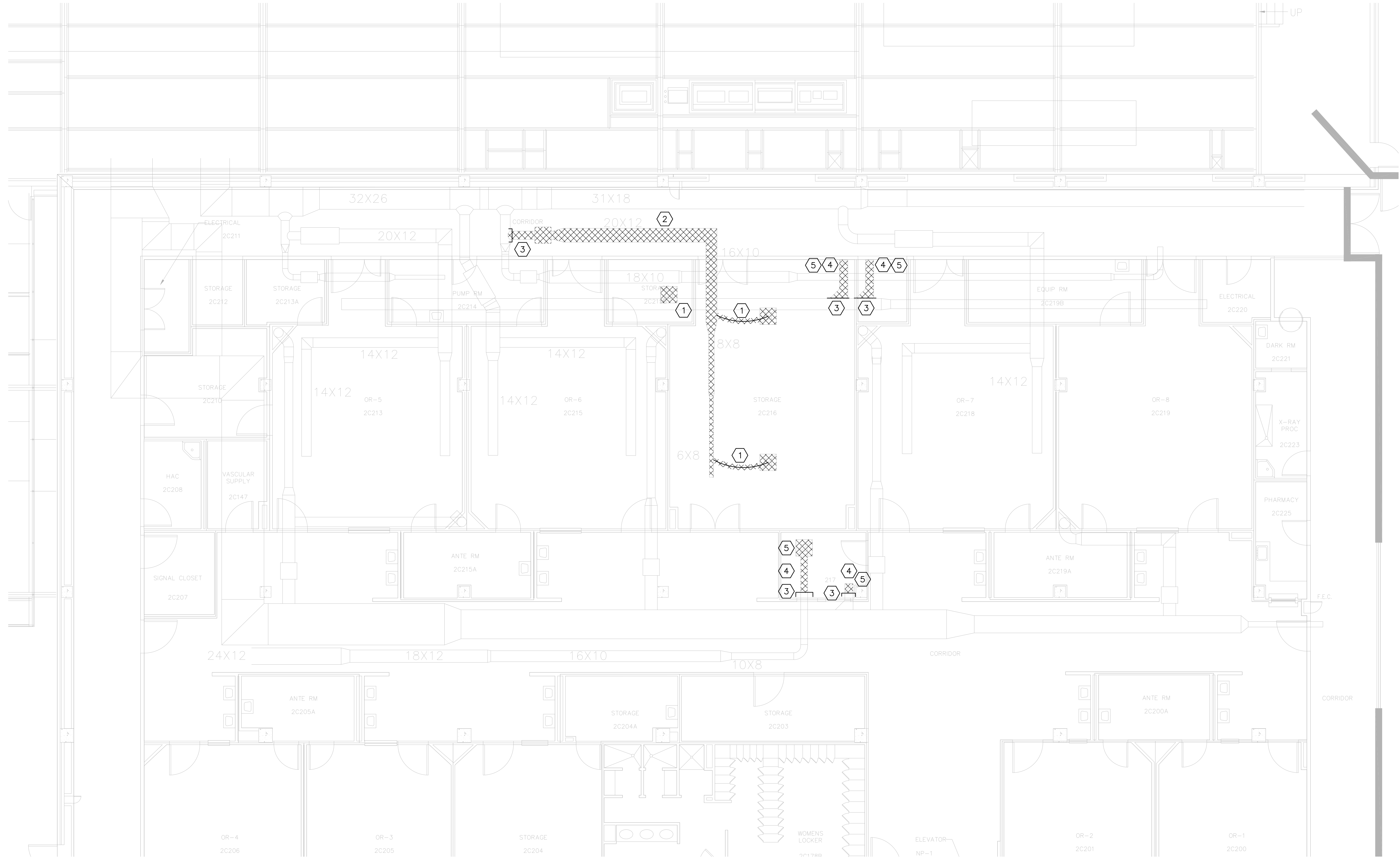


three inches = one foot
one and one half inches = one foot
one inch = one foot
three quarters inch = one foot
one half inch = one foot
three eighths inch = one foot
one quarter inch = one foot
one eighth inch = one foot



SHEET NOTES

1.

SHEET KEYNOTES

1

REMOVE AIR DEVICE AND FLEXIBLE DUCT.

2

REMOVE SUPPLY DUCT.

3

CAP AND SEAL EXISTING DUCT TAKEOFF.

4

REMOVE BRANCH DUCT.

5

REMOVE AIR DEVICE.

1

MECHANICAL PLAN - DEMOLITION

SCALE: 3/16" = 1' - 0"

BUILDING C - 2ND FLOOR
KEY PLAN

FINAL SUBMITTAL
APPROVED FOR CONSTRUCTION

| | | | | | | | | | | |
|------------|------|--------------|---|-----------------------|--|---|--|--|-----------------------------------|---|
| | | CONSULTANTS: | ENGINEER-OF-RECORD STEPHEN T. STEFFE | GA. P.E. NO. 24897 | ARCHITECT/ENGINEERS: <div>AKEA INC. 3603 NW 98th Street, Suite B Gainesville, FL 32606 Phone: (352) 474-6124 Fax: (352) 474-6324 COA: FL #26693 AKEA Project No. 072-14</div> | Drawing Title MECHANICAL PLAN - DEMOLITION | Project Title NEW SURGICAL 9TH OR SUITE | Project Number 508-14-105 | Building Number | Office of Construction and Facilities Management |
| | | | | | | | | | | |
| | | | | | | | | | | |
| | | | | | | | | | | |
| | | | | | | | | | | |
| | | | | | | | | | | |
| Revisions: | Date | | | | | Approved: Project Director | Location Atlanta, Georgia | Drawing Number M100 12 of 36 | Department of Veterans Affairs | |
| | | | | | | | | | | |
| | | | | | | | | | | |