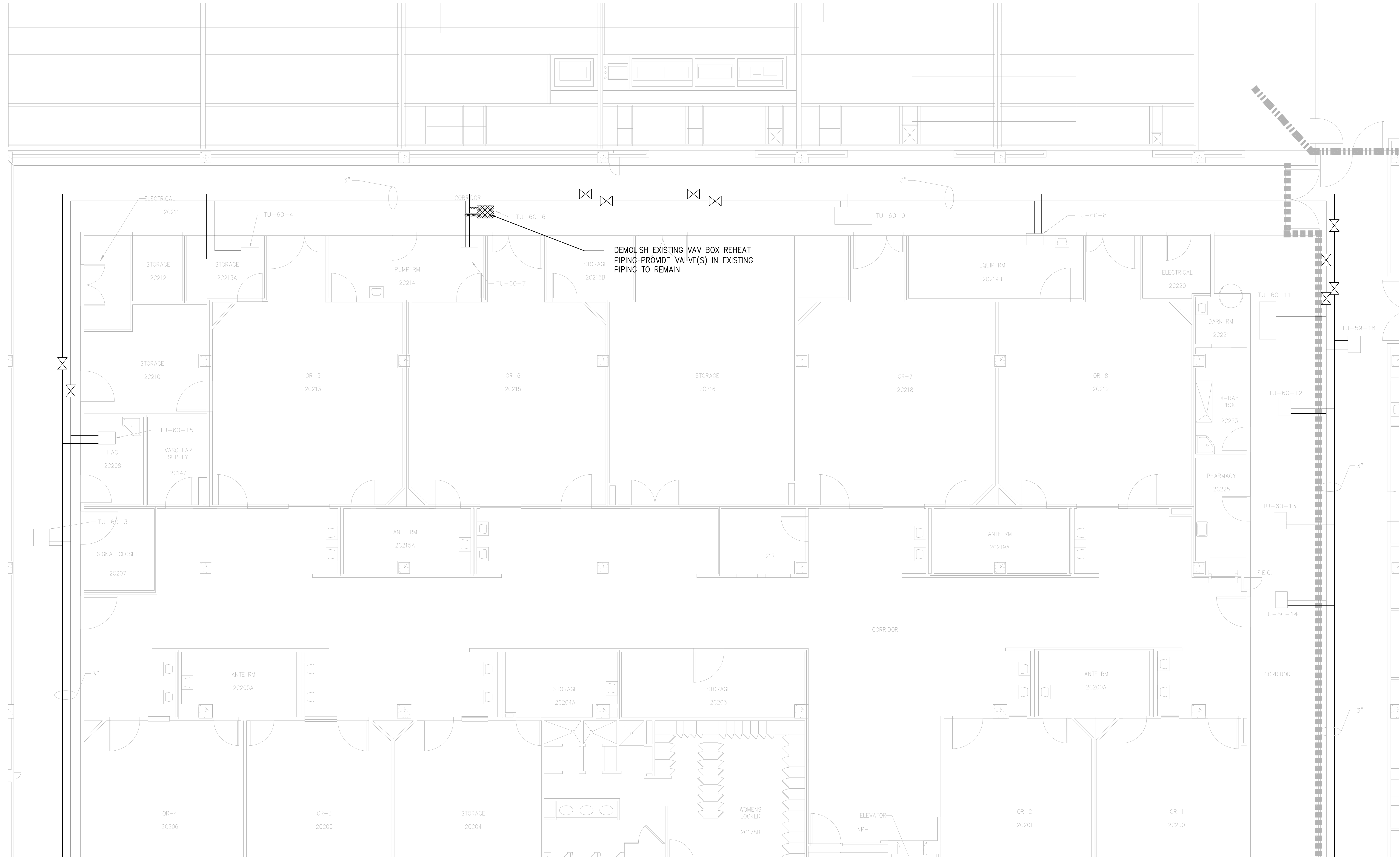


1
2
3
4
5
6
7
8
9

three inches = one foot
one and one half inches = one foot
one inch = one foot
three quarters inch = one foot
one half inch = one foot
three eighths inch = one foot
one quarter inch = one foot
one eighth inch = one foot

Revisions: _____ Date _____



**BUILDING C - 2ND FLOOR
KEY PLAN**

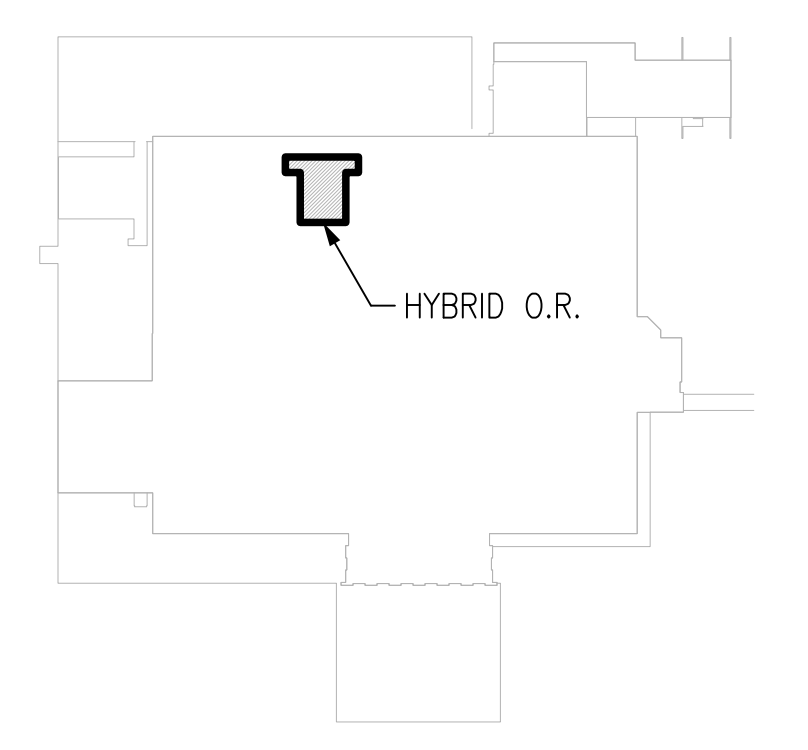
1 MECHANICAL PLAN - DEMOLITION
SCALE: 3/16" = 1' - 0"

SHEET NOTES

1.

SHEET KEYNOTES

1.



FINAL SUBMITTAL
APPROVED FOR CONSTRUCTION

		CONSULTANTS:	ENGINEER-OF-RECORD STEPHEN T. STEFFE	GA. P.E. NO. 24897	ARCHITECT/ENGINEERS: <div>AKEA INC. 3603 NW 98th Street, Suite B Gainesville, FL 32606 Phone: (352) 474-6124 Fax: (352) 474-6324 COA: FL #26693 AKEA Project No. 072-14</div>	Drawing Title	Project Title	Project Number 508-14-105	Office of Construction and Facilities Management		
						MECHANICAL PIPING PLAN - DEMOLITION	NEW SURGICAL 9TH OR SUITE	Building Number			
						Approved: Project Director	Location Atlanta, Georgia			Drawing Number	
							Date APRIL 30, 2014	Checked STS		Drawn TJM	M101 13 of 36
Revisions:	Date										