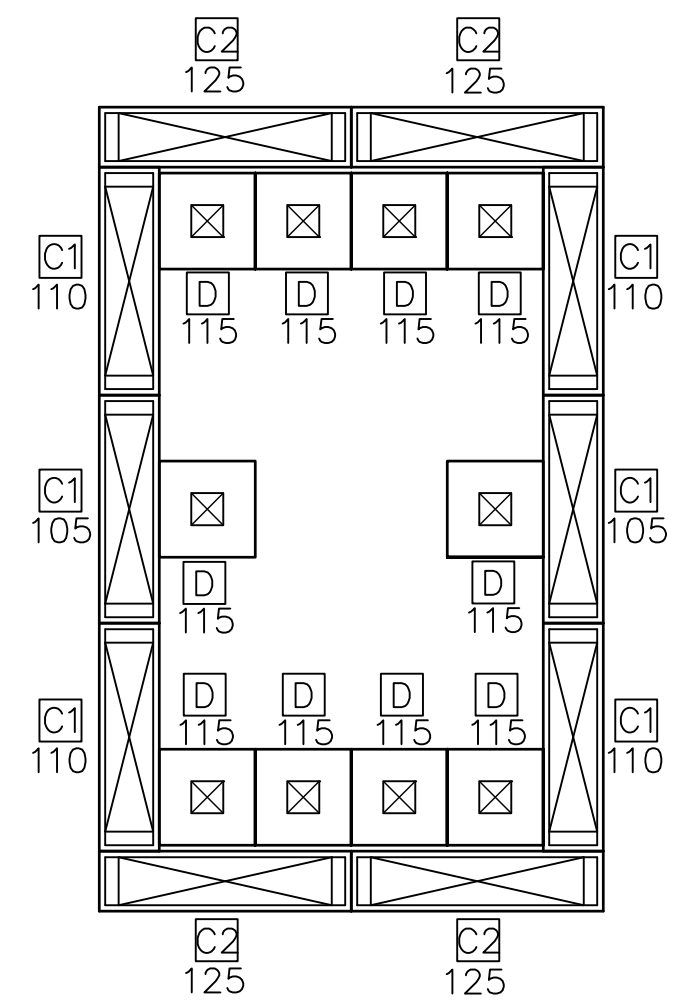
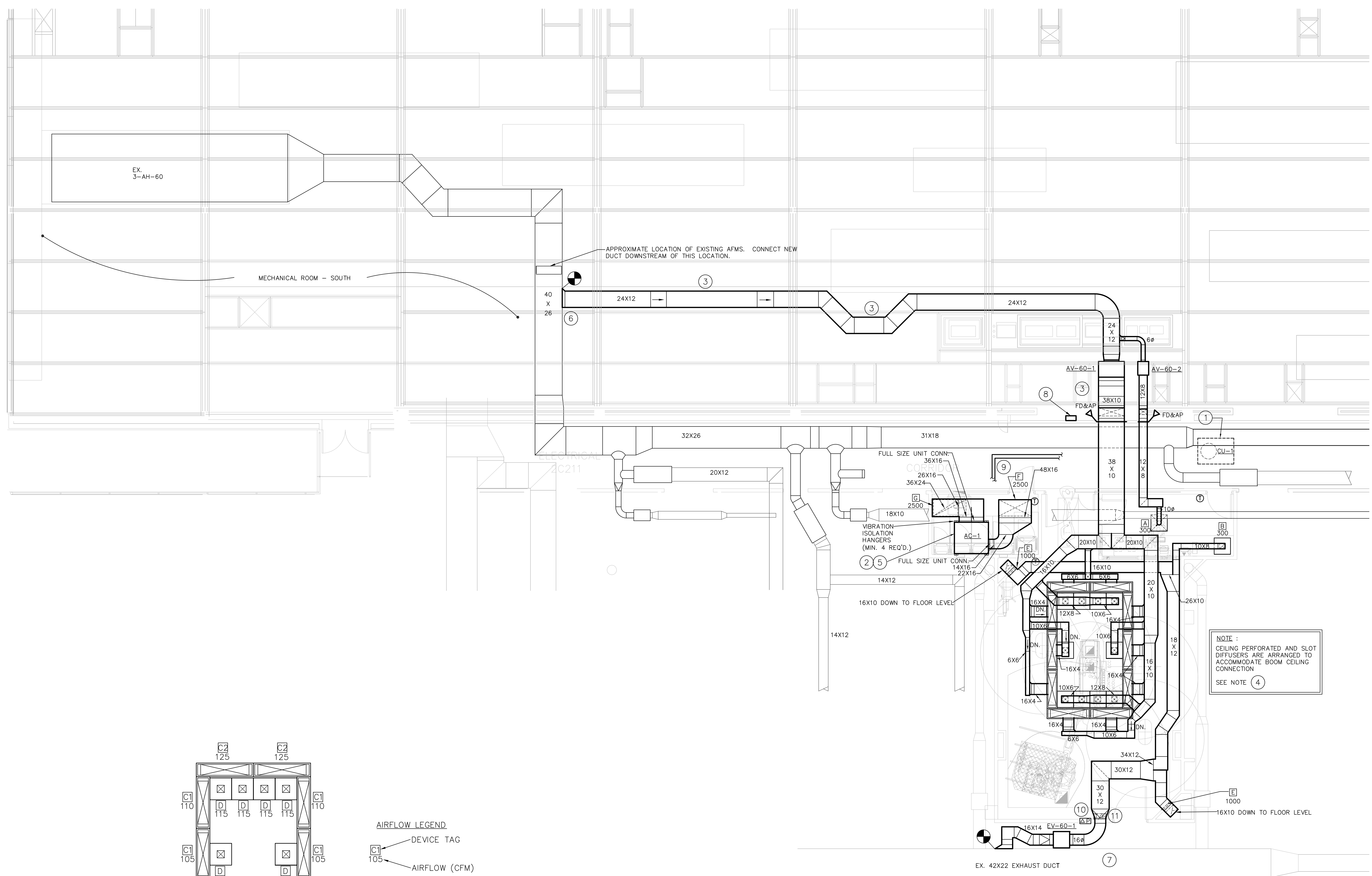


three inches = one foot
one and one half inches = one foot
one inch = one foot
three quarters inch = one foot
one half inch = one foot
one quarter inch = one foot
three eighths inch = one foot
one eighth inch = one foot
one eighth inch = one foot



AIRFLOW LEGEND
C1 105
C1 105

PARTIAL CEILING PLAN - AIR DISTRIBUTION
SCALE: 1/4" = 1'-0"

1 MECHANICAL PLAN - NEW WORK
SCALE: 3/16" = 1' - 0"

SHEET NOTES

- A. UNLESS NOTED OTHERWISE, ALL EXISTING DUCTWORK, PIPING AND/OR EQUIPMENT SHOWN SHALL REMAIN UNCHANGED.
- B. COORDINATE ALL NEW WORK WITH EXISTING TO REMAIN.
- C. WHERE NEW DUCTS ARE CONNECTED TO EXISTING, TAPE AND SEAL ALL CONNECTIONS AIR TIGHT.
- D. INSULATE ALL NEW DUCT CONNECTIONS TO MATCH EXISTING ADJACENT INSULATION. FINISH AND PAINT TO MATCH.

SHEET KEYNOTES

- 1. ROUTE NEW REFRIGERANT PIPING THROUGH SLAB ABOVE TO NEW CONDENSING UNIT ON ROOF. COORDINATE ALL ROOF PENETRATIONS WITH VA AND ROOFING INSTALLING CONTRACTOR FOR APPROVED INSTALLATION.
- 2. ROUTE PUMPED CONDENSATE PIPE ABOVE CEILING TO MECHANICAL ROOM AND TERMINATE BELOW RAISED FLOOR GRATING AT NEAREST FLOOR DRAIN.
- 3. OFFSET DUCT AS REQUIRED TO AVOID EXISTING OBSTRUCTIONS IN EXISTING CORRIDOR CEILING SPACE.
- 4. SEE ARCHITECTURAL PLANS FOR CEILING ARRANGEMENTS.
- 5. SUPPORT NEW INDOOR AC-1 UNIT FROM STRUCTURE ABOVE WITH THREADED ROD HANGERS AND VIBRATION ISOLATION ASSEMBLIES.
- 6. CONNECT NEW MEDIUM PRESSURE SUPPLY DUCT TO EXISTING. FIELD VERIFY EXACT LOCATION AND COORDINATE WITH EXACT LOCATION OF EXISTING AIR FLOW MONITORING STATION (AFMS).
- 7. CONNECT NEW EXHAUST DUCT BRANCH TO EXISTING EXHAUST MAIN DUCT. SEAL CONNECTION AIR TIGHT.
- 8. APPROXIMATE LOCATION OF NEW DDC PANEL. COORDINATE FINAL LOCATION WITH COR PRIOR TO INSTALLING. CONNECT NEW CONTROL PANEL TO EXISTING BAS.
- 9. ROUTE NEW REFRIGERANT PIPING IN CEILING. COORDINATE WITH EXISTING OBSTRUCTIONS AND NEW WORK.
- 10. PROPOSED LOCATION FOR NEW ROOM RELATIVE-PRESSURE DIFFERENTIAL MONITORING PANEL. COORDINATE EXACT LOCATION WITH NEW WALL MOUNTED EQUIPMENT.
- 11. PROPOSED LOCATION FOR NEW ROOM TEMPERATURE/HUMIDITY DISPLAY PANEL. COORDINATE EXACT LOCATION WITH NEW WALL MOUNTED EQUIPMENT.

FINAL SUBMITTAL
APPROVED FOR CONSTRUCTION

CONSULTANTS:		ENGINEER-OF-RECORD STEPHEN T. STEFFE	GA. P.E. NO. 24897	ARCHITECT/ENGINEERS: AKEA INC. 3603 NW 98th Street, Suite B Gainesville, FL 32606 Phone: (352) 474-6124 Fax: (352) 474-6324 COA: FL #26693 AKEA Project No. 072-14	Drawing Title MECHANICAL PLAN - NEW WORK	Project Title NEW SURGICAL 9TH OR SUITE	Project Number 508-14-105	Office of Construction and Facilities Management	
Revisions:		Date		Approved: Project Director		Location Atlanta, Georgia	Drawing Number M200	Department of Veterans Affairs	
						Date APRIL 30, 2014	Checked STS	Drawn TJM	14 of 36