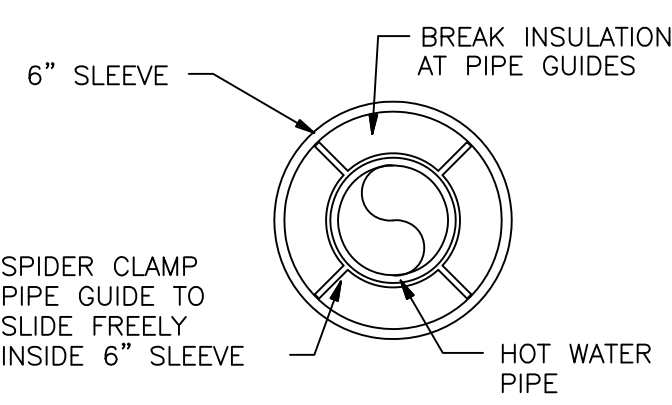
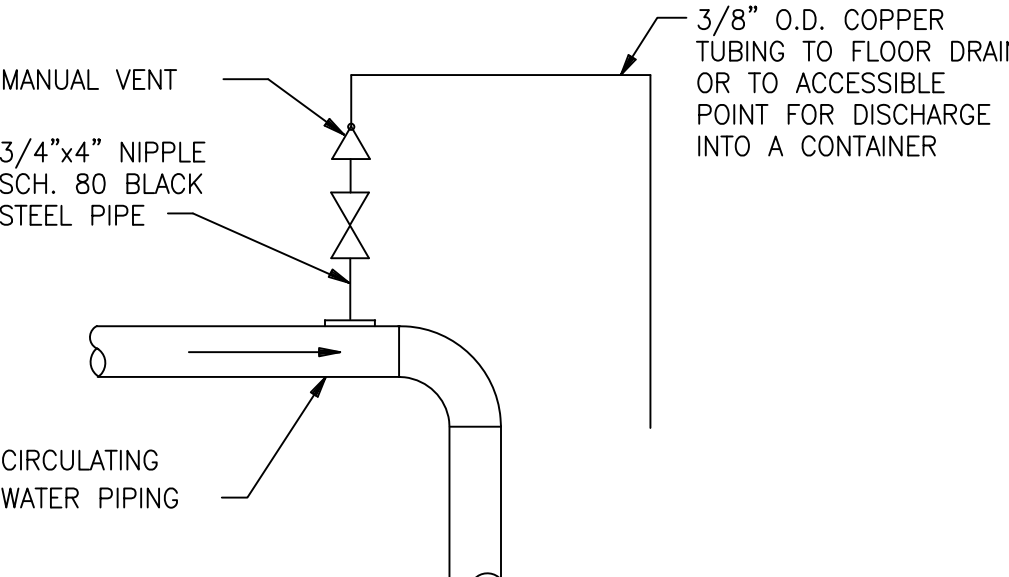


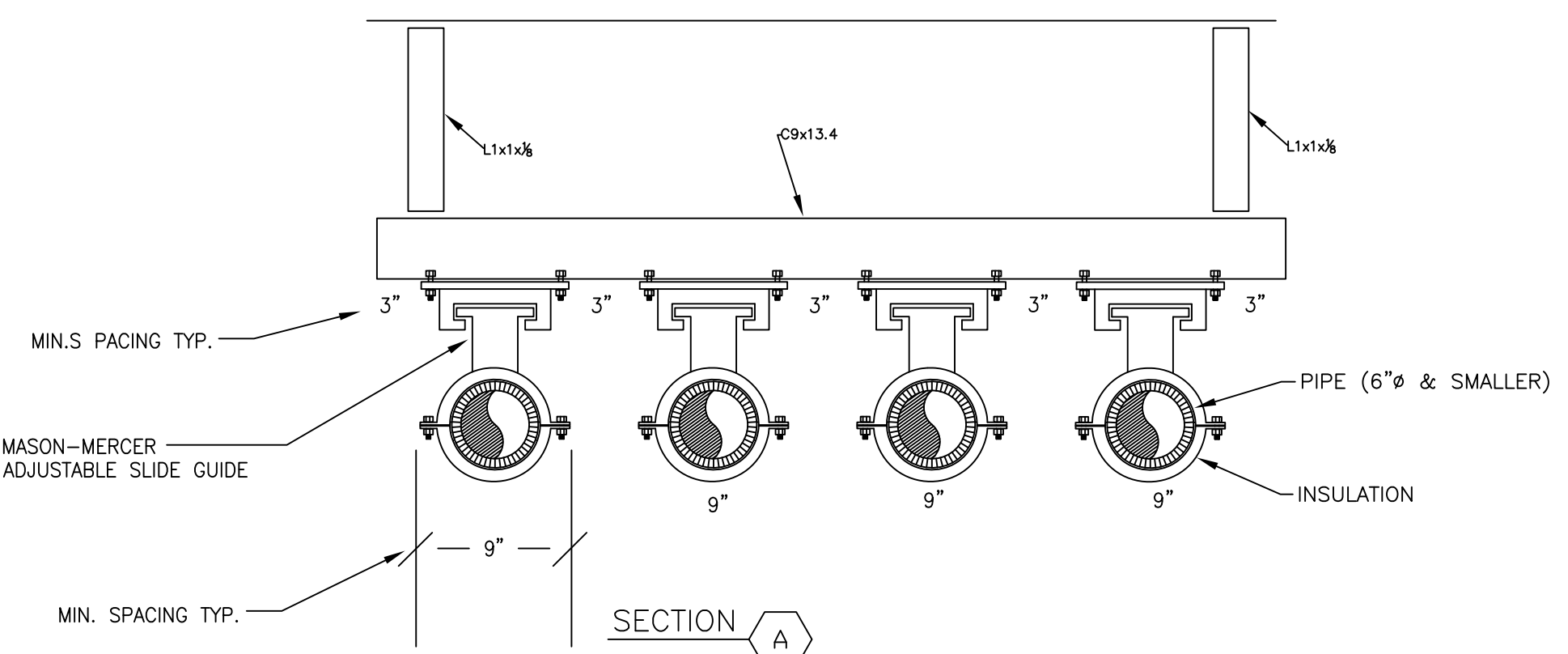
three inches = one foot  
one and one half inches = one foot  
one inch = one foot  
three quarters inch = one foot  
one half inch = one foot  
one quarter inch = one foot  
one eighth inch = one foot  
one sixteenth inch = one foot



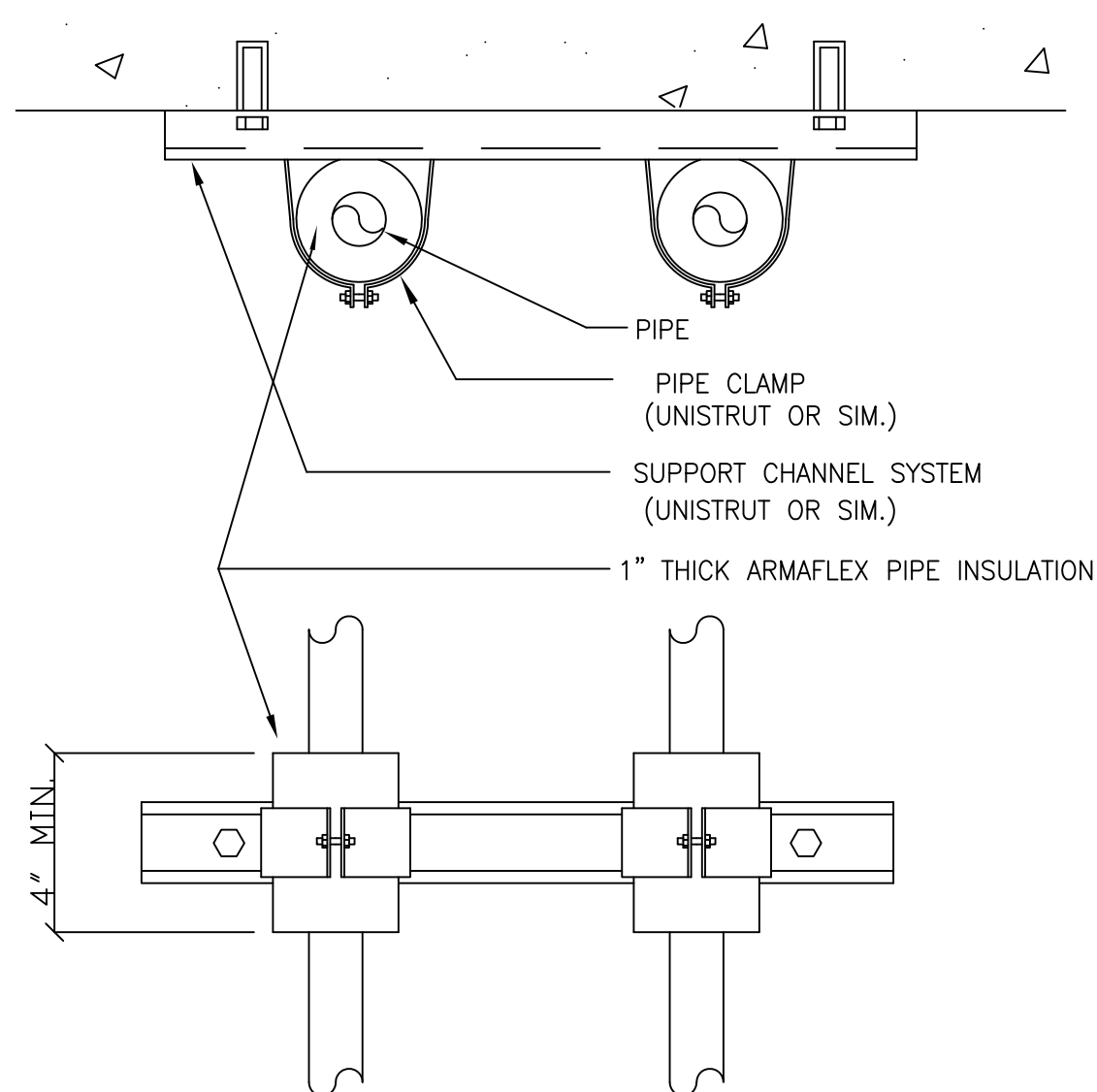
GUIDE IN SLEEVE DETAIL  
SCALE: SCALE



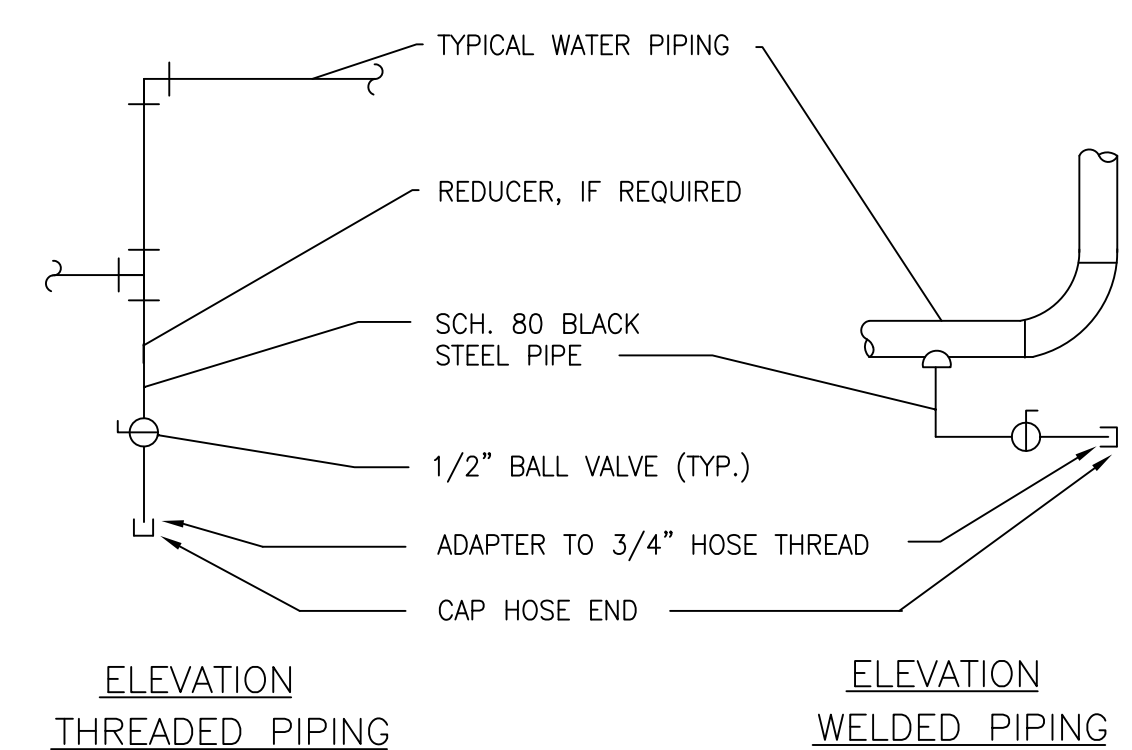
TYPICAL HIGH POINT AIR VENT DETAIL  
NO SCALE



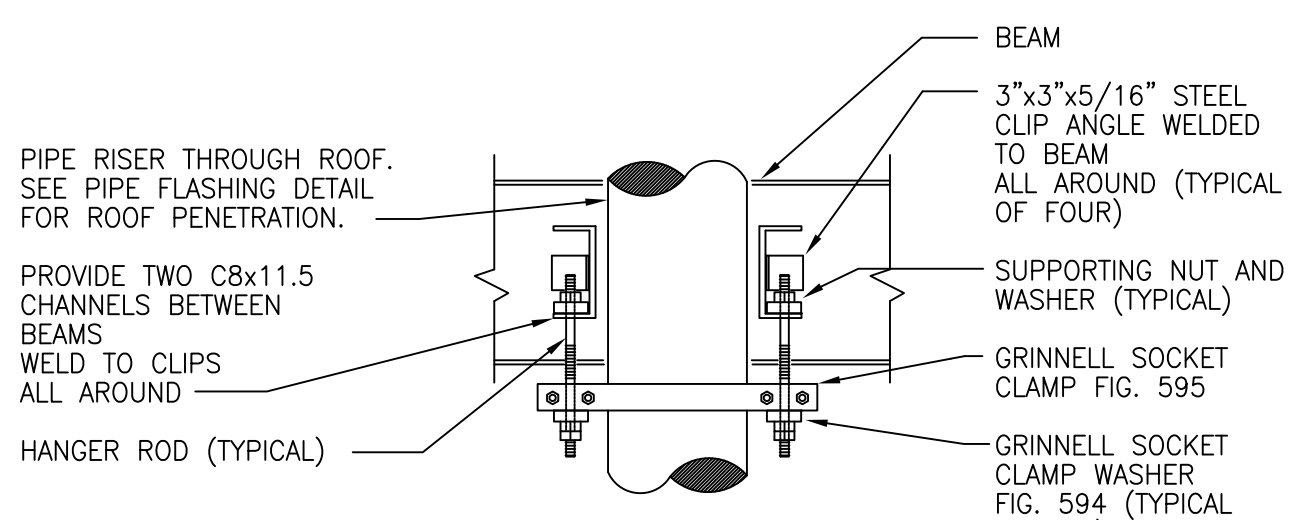
PIPE GUIDE & PIPE SHOE FOR HOT INSULATED LINES



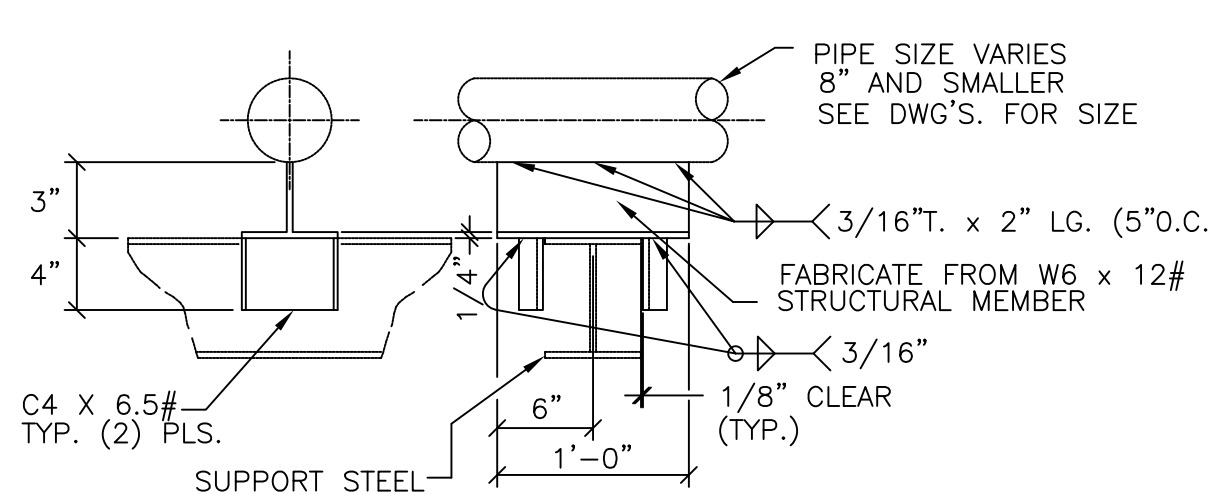
SMALL DIAMETER PIPE ISOLATION DETAIL  
NO SCALE (FOR PIPE LESS THAN 2")



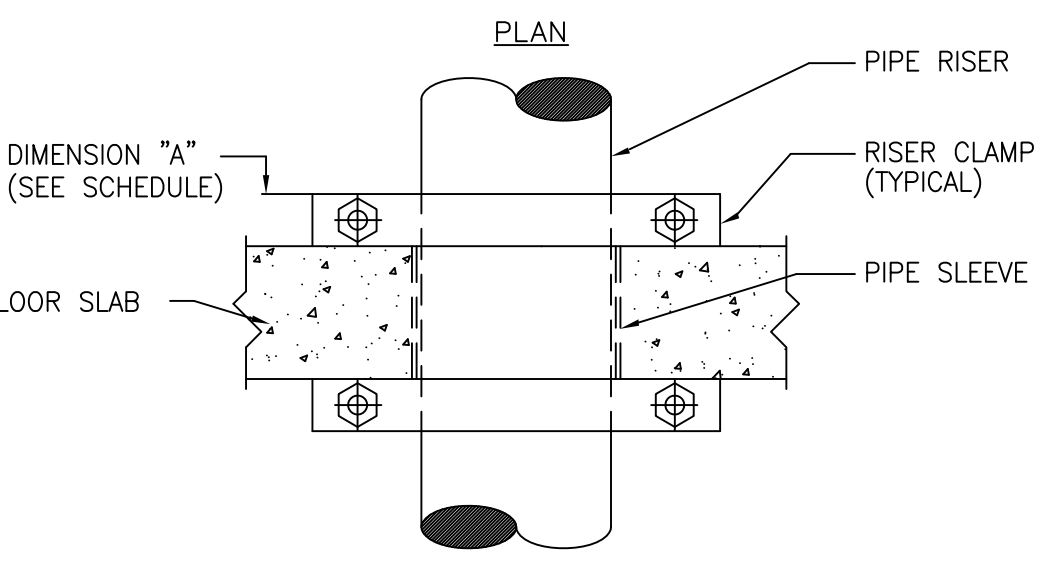
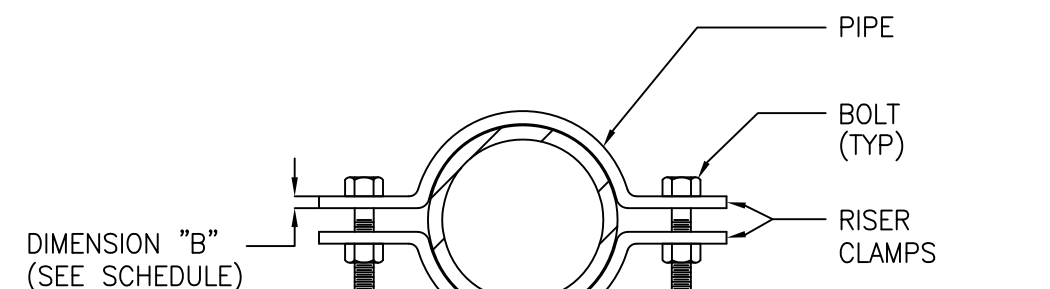
TYPICAL DRAIN VALVE CONNECTION  
NO SCALE



PIPE RISER THRU ROOF SUPPORT  
NO SCALE



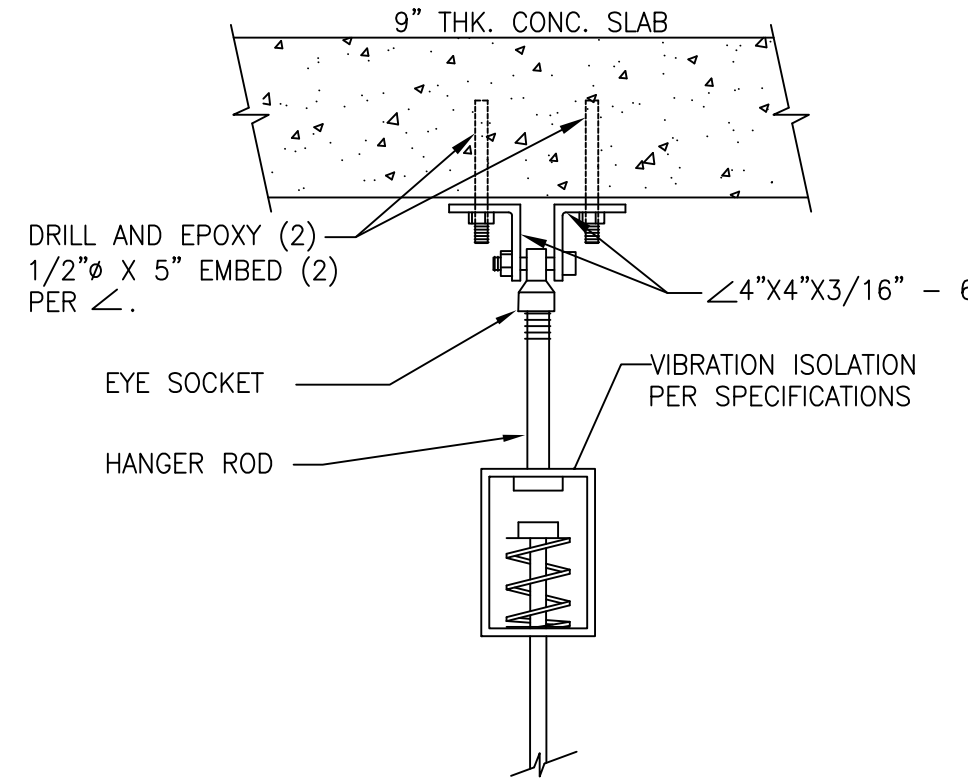
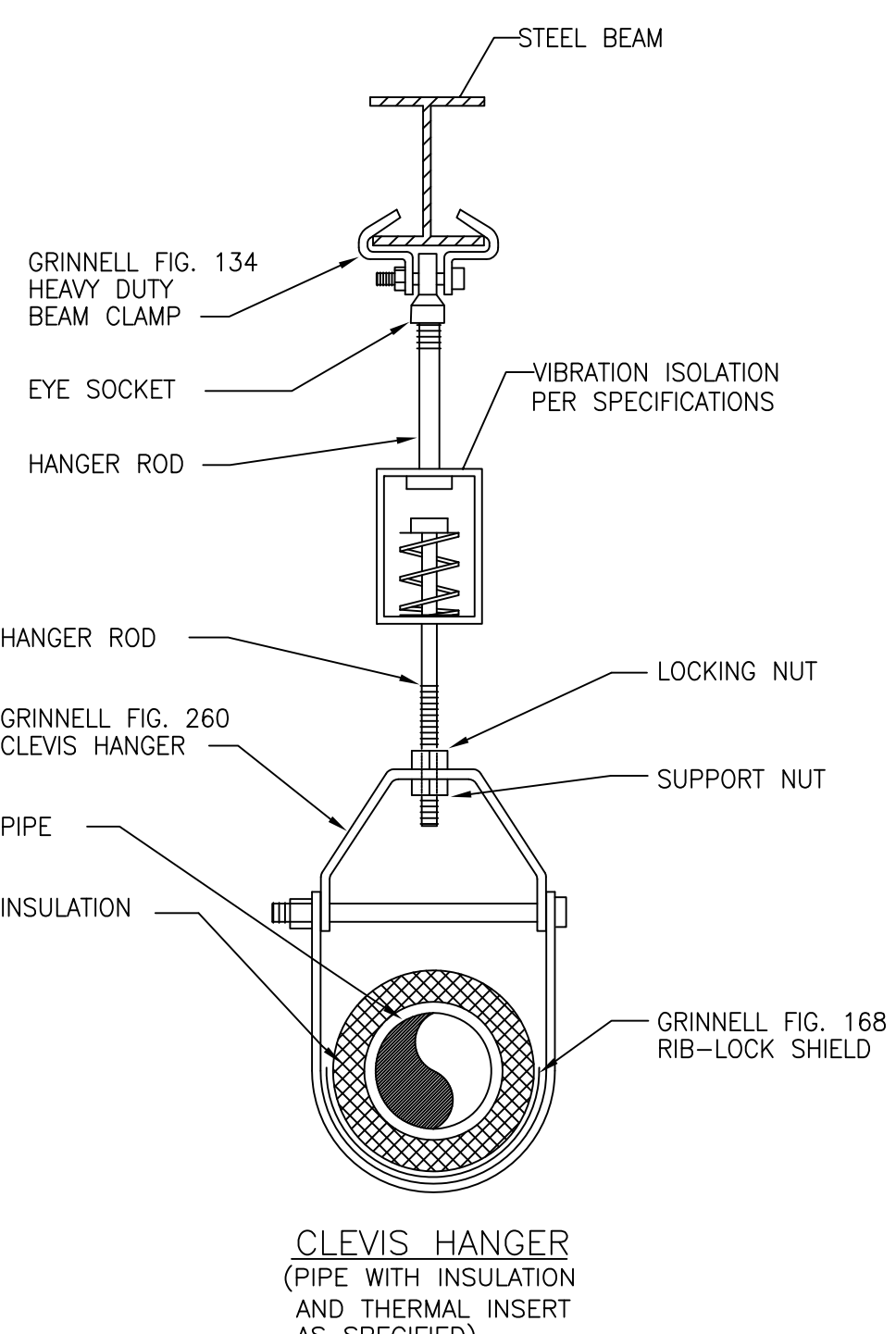
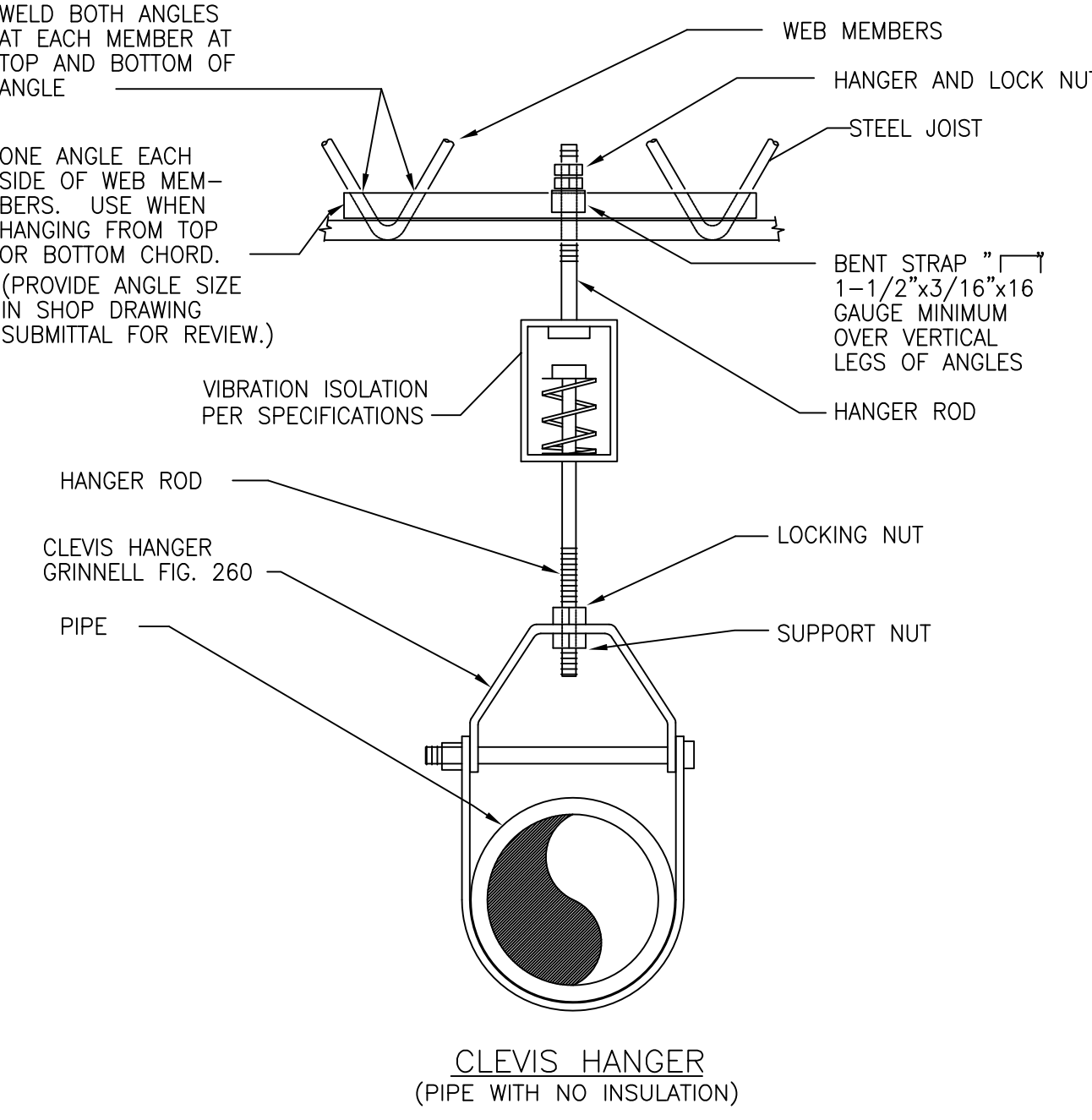
PIPE ANCHOR



ANCHORS FOR RISERS		
PIPE SIZE	BOLT DIA.	RISER CLAMP DIMENSIONS A x B
1/2" THRU 1"	3/8"	1-1/4" x 3/16"
1-1/4" THRU 3"	3/8"	1-1/4" x 1/4"
4"	1/2"	1-1/2" x 3/16"
5" AND 6"	1/2"	2" x 1/4"

NOTE:  
PIPE RISER ANCHORS SHALL BE REQUIRED IN TOP AND BOTTOM OF VERTICAL PIPE RUNS LOCATED IN SHAFT SPACES TO SECURE PIPES IN PLACE.

ANCHORS FOR PIPE RISERS  
NO SCALE



PIPE HANGER DETAILS  
NO SCALE

<b>CONSULTANTS:</b>		ENGINEER-OF-RECORD STEPHEN T. STEFFE	GA. P.E. NO. 24897	<b>ARCHITECT/ENGINEERS:</b>		Drawing Title DETAILS	Project Title NEW SURGICAL 9TH OR SUITE	Project Number 508-14-105	Office of Construction and Facilities Management	
				AKEA INC. 3603 NW 98th Street, Suite B Gainesville, FL 32606 Phone: (352) 474-6124 Fax: (352) 474-6324 COA: FL #26693 AKEA Project No. 072-14		Approved: Project Director	Location Atlanta, Georgia	Building Number		
Revisions:		Date					Date APRIL 30, 2014	Checked STS		Drawn TJM

FINAL SUBMITTAL  
APPROVED FOR CONSTRUCTION

