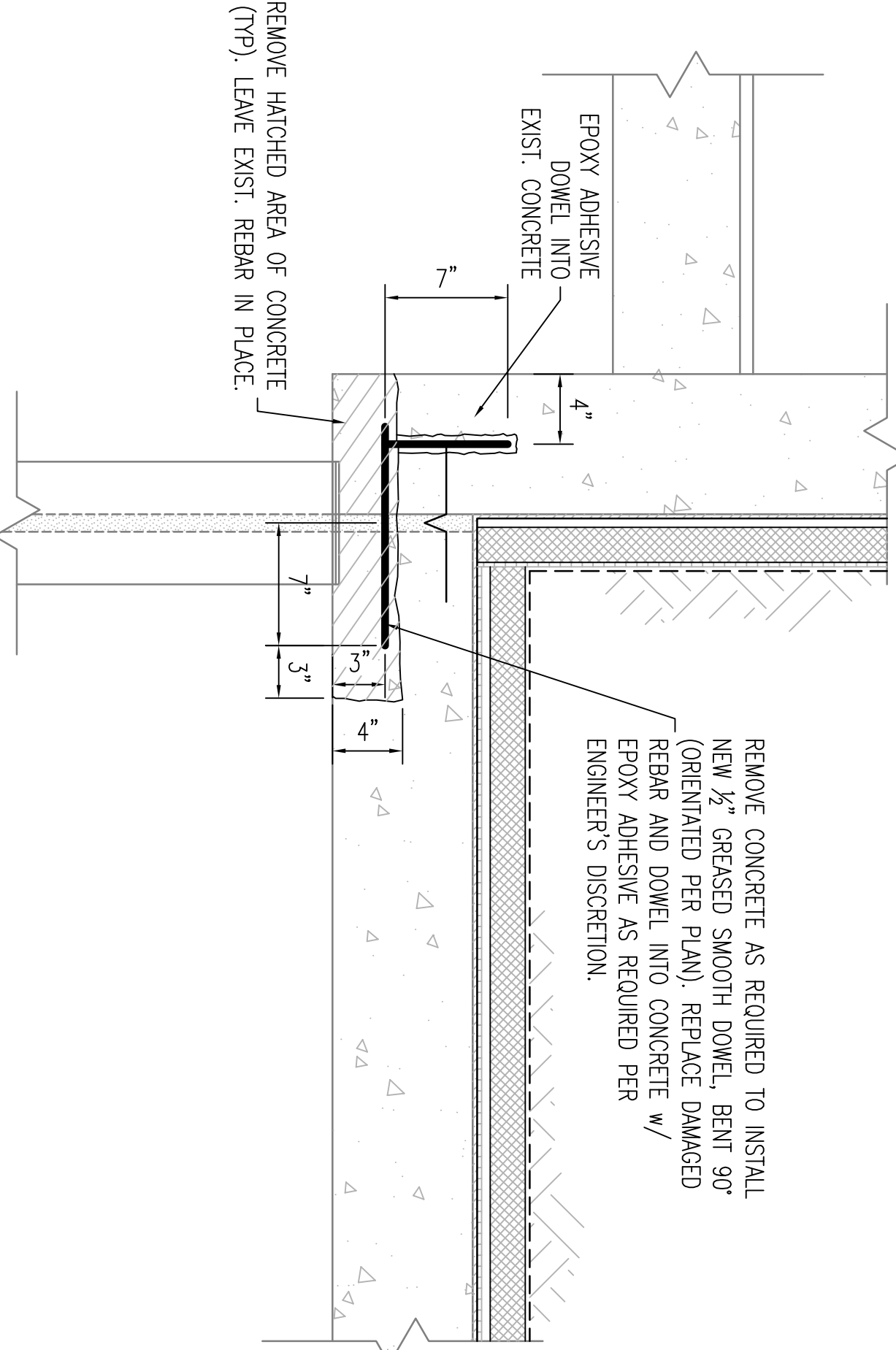


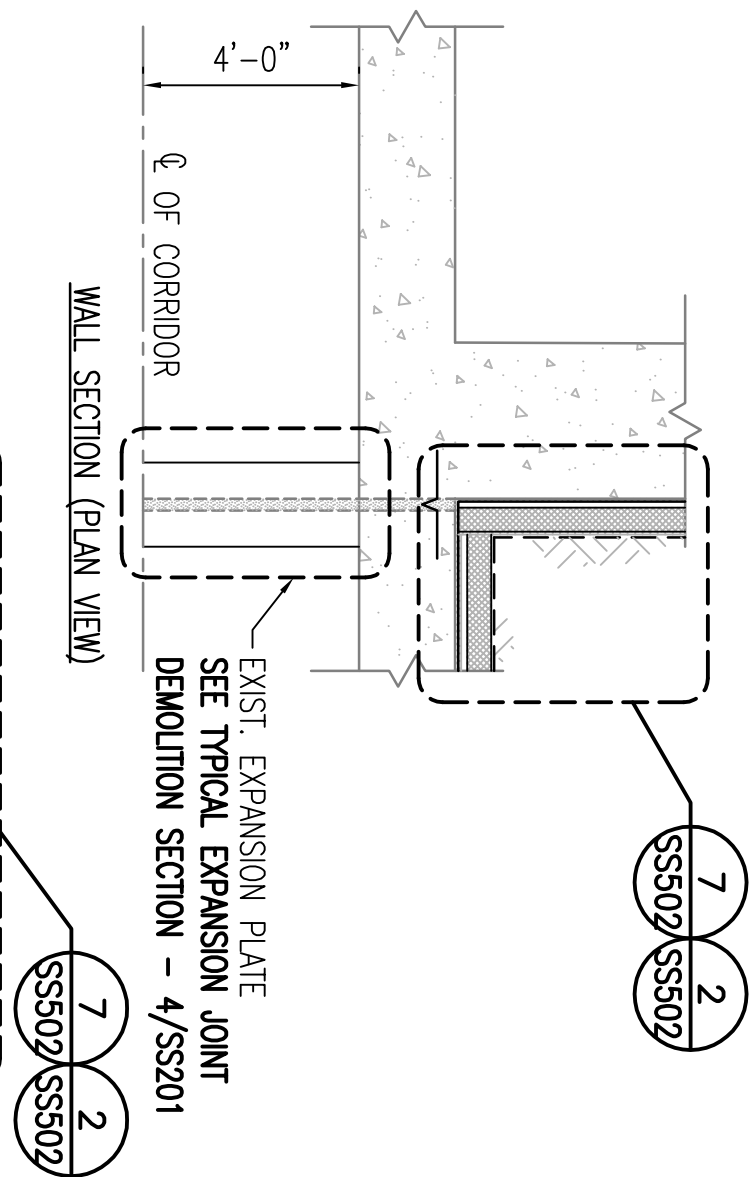
CEILING EXPANSION JOINT  
DOWEL DETAIL AT BLDG 9

- NOTE:  
SCALE: 3/8"=1'-0"
1. REMOVE 16 INCHES OF CONCRETE ON ONE SIDE OF TUNNEL CEILING (EXPOSING EXISTING REBAR) TO INSTALL NEW 1/2" GREASED SMOOTH DOWEL (ORIENTATED PER PLAN). REMOVE CONCRETE UNTIL ADEQUATE REPAIR IS FOUND. REPLACE DAMAGED REBAR AND DOWEL INTO CONC AS REQUIRED PER ENGINEER'S DISCRETION.
  2. REMOVE ANY LOOSE OR DETERIORATED CONCRETE AND REPAIR EXPANSION JOINT PER CONCRETE REPAIR DETAIL 3/SS101. FOR INSTALLATION OF NEW EXPANSION JOINT HARDWARE SEE DETAIL 2/SS501.

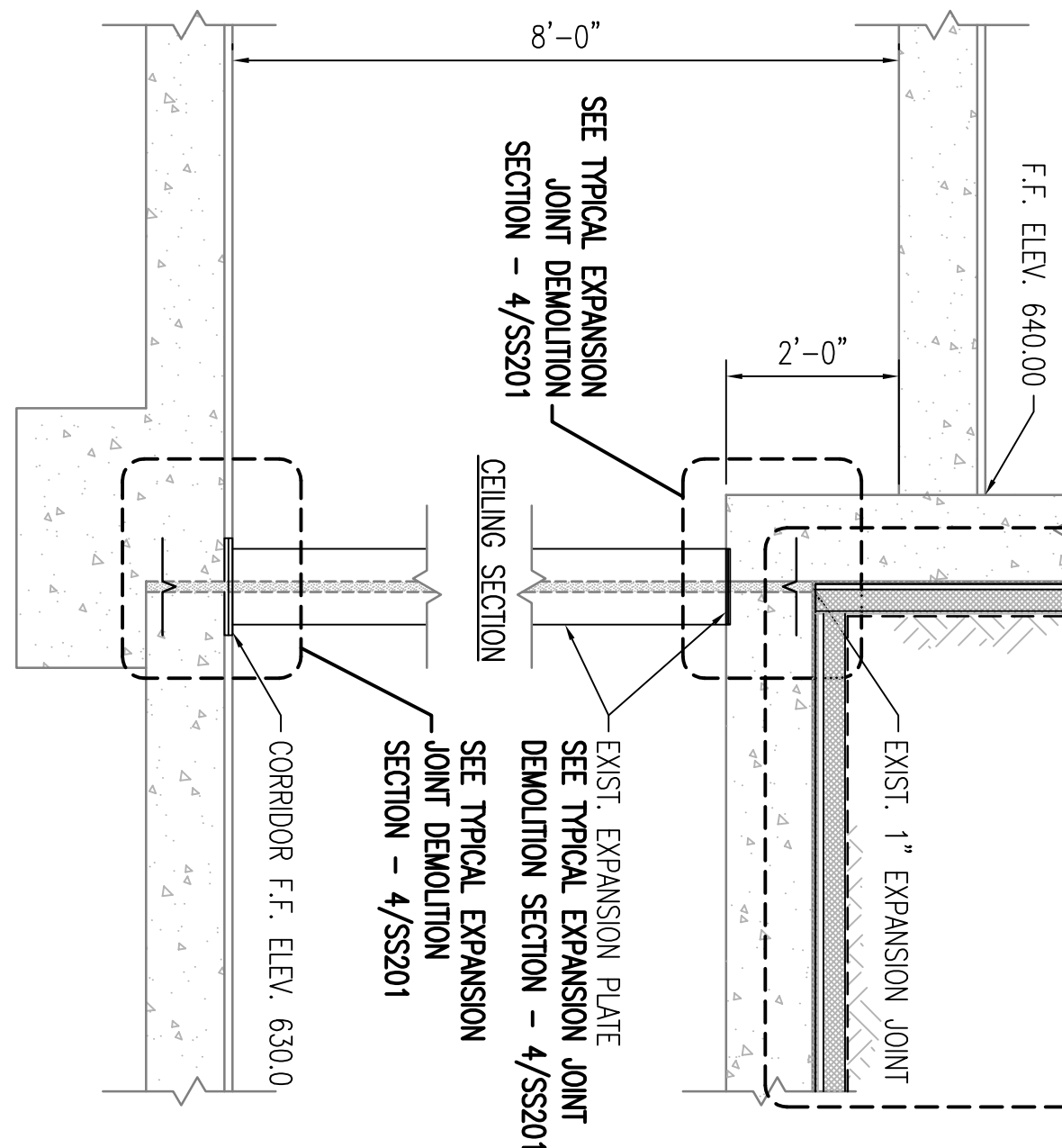


CEILING EXPANSION JOINT  
DOWEL DETAIL AT BLDG 9

- NOTES:
1. REMOVE ANY LOOSE OR DETERIORATED CONCRETE AND REPAIR EXPANSION JOINT PER CONCRETE REPAIR DETAIL 3/SS101. FOR INSTALLATION OF NEW EXPANSION JOINT HARDWARE SEE DETAIL 2/SS501.

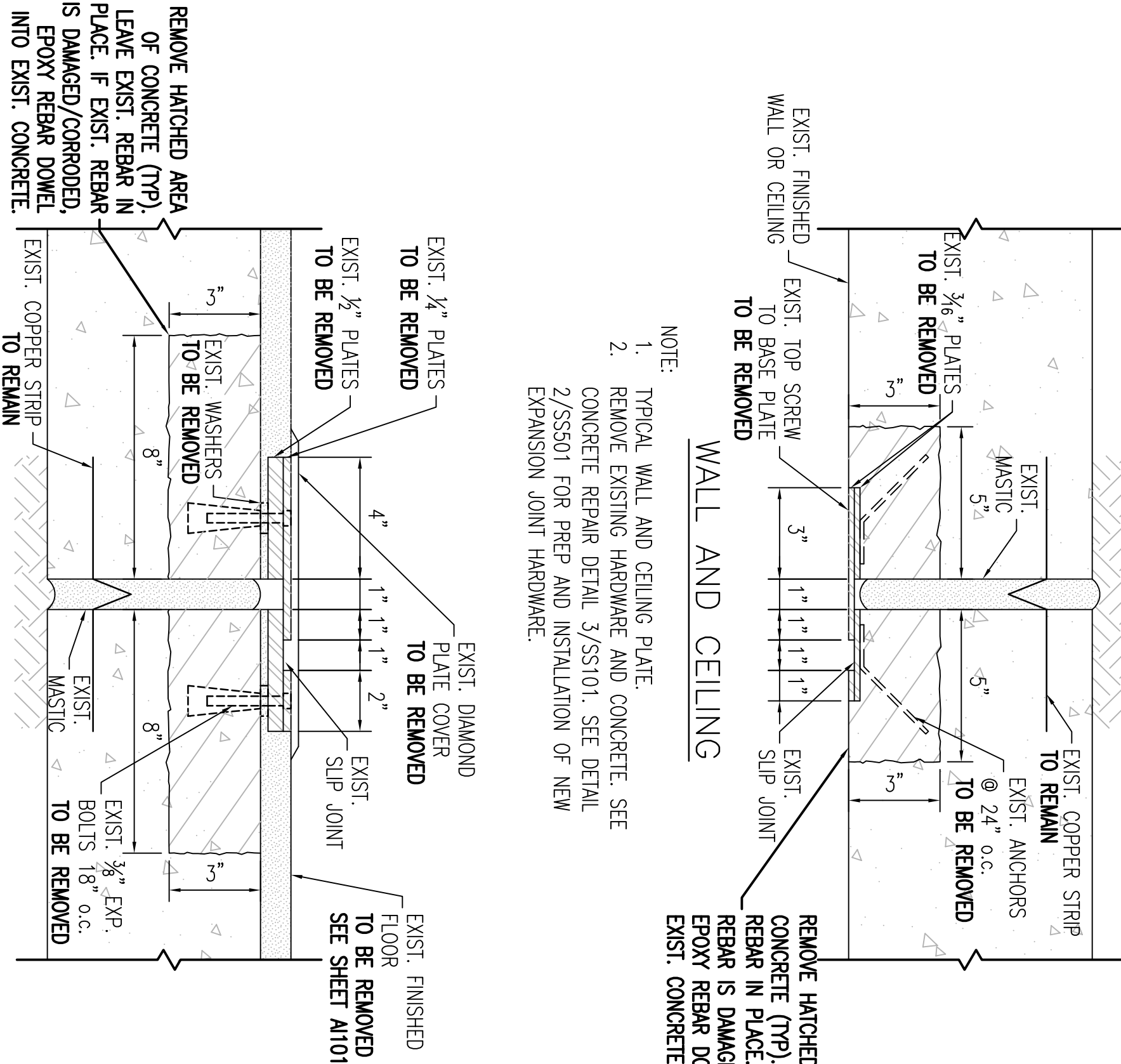


- NOTE:
1. TYPICAL WALL AND CEILING PLATE
  2. REMOVE EXISTING HARDWARE AND CONCRETE. SEE CONCRETE REPAIR DETAIL 3/SS101. SEE DETAIL 2/SS501 FOR PREP AND INSTALLATION OF NEW EXPANSION JOINT HARDWARE.



EXISTING EXPANSION JOINT  
SECTION AT BLDG 9

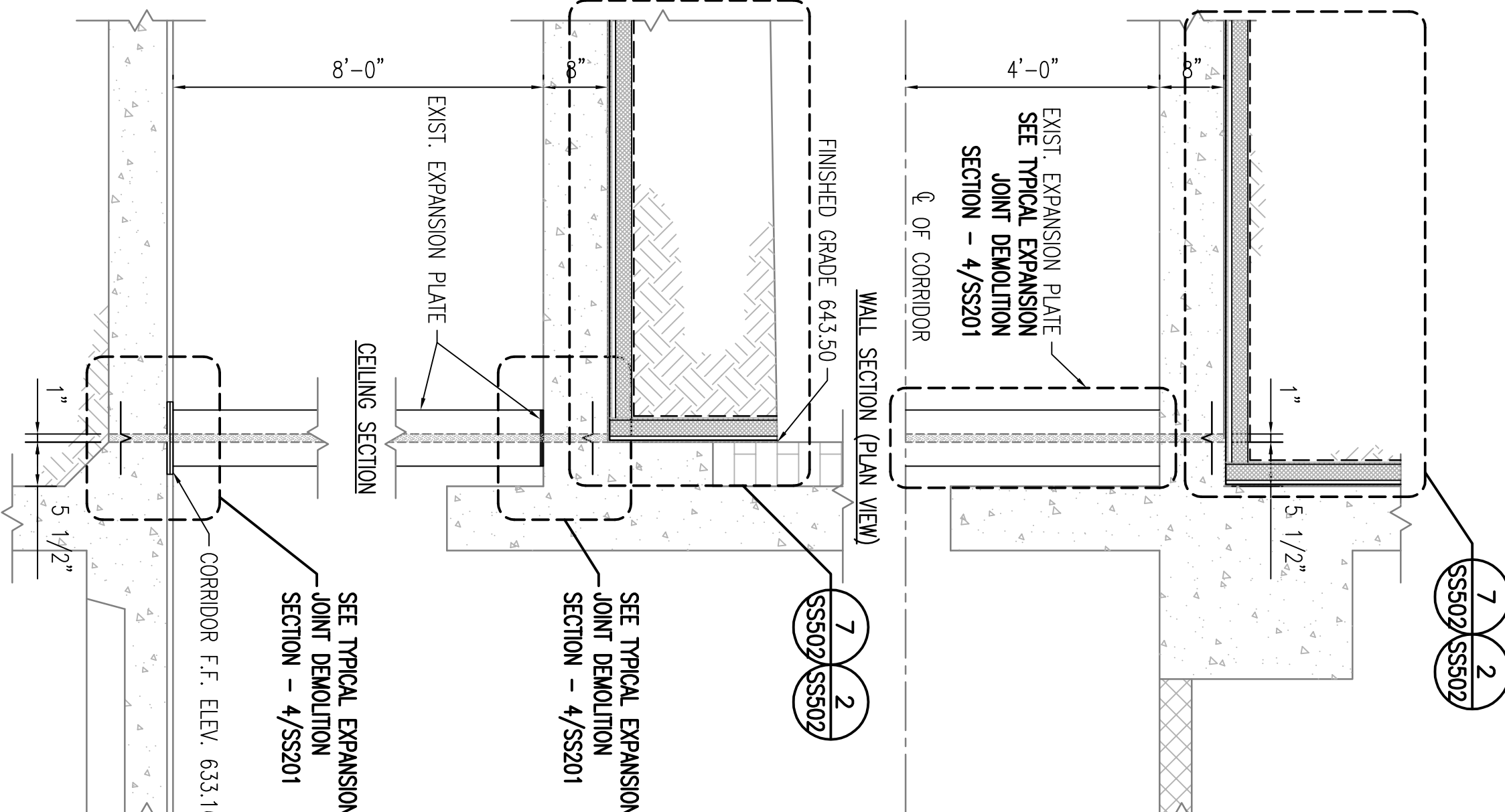
- NOTE:  
SCALE: N.T.S.
1. REMOVE FLOOR TILES, WALL PLATES, AND CEILING PLATES. REPAIR CONCRETE PER 3/SS101. FOR INSTALLATION OF NEW EXPANSION JOINT HARDWARE SEE DETAILS 1/SS501 AND 2/SS501.



- NOTE:
1. TYPICAL FLOOR PLATE
  2. REMOVE EXISTING HARDWARE AND CONCRETE. SEE CONCRETE REPAIR DETAIL 3/SS101. SEE DETAIL 1/SS501 FOR PREP AND INSTALLATION OF NEW EXPANSION JOINT HARDWARE.

TYPICAL EXPANSION JOINT  
DEMOLITION SECTION

- NOTE:  
SCALE: 3/8"=1'-0"
1. FOR NEW EXPANSION JOINT HARDWARE SEE DETAILS 1/SS501 AND 2/SS501.
  2. SEE ELECTRICAL DRAWINGS FOR PROTECTION REQUIREMENTS FOR EXISTING UTILITIES AT EXPANSION JOINTS DURING WORK.



EXISTING EXPANSION JOINT  
SECTION AT BLDG 38

- NOTE:  
SCALE: N.T.S.
1. REMOVE FLOOR TILES, WALL PLATES, AND CEILING PLATES. REPAIR CONCRETE PER 3/SS101. FOR INSTALLATION OF NEW EXPANSION JOINT HARDWARE SEE DETAILS 1/SS501 AND 2/SS501.

Revision	Date

**CONSULTANTS:**  
GEOTECHNICAL CONSULTANT:  
**ADVANTAGE ENGINEERS**  
10000 Old Orchard Road  
Suite 200  
Baltimore, MD 21244  
410.481.1000  
www.advantage-engineers.com

**ENGINEERS:**  
**BARRY ISETT & ASSOCIATES, INC.**  
Multidiscipline Engineers & Consultants  
10000 Old Orchard Road  
Suite 200  
Baltimore, MD 21244  
410.481.1000  
www.barryisett.com

**Drawing Title**  
CONNECTING CORRIDOR SECTIONS  
AND REPAIR DETAILS - BLDG 9-38

**Project Title**  
REPAIR STRUCTURAL  
TUNNEL JOINTS

Location	COATESVILLE
Date	07/17/2018
Checked	REK / RKF
Drawn	FRK

Project Number	542-18-104
Building Number	9 - 38 - 59
Drawing Number	SS201
Dwg 22	d 31

**Office of Construction and Facilities Management**  
Department of Veterans Affairs

CONTRACTOR SHALL VERIFY ALL CONDITIONS AND DIMENSIONS FOR THE ENTIRE PROJECT BEFORE PROCEEDING WITH THE WORK.