

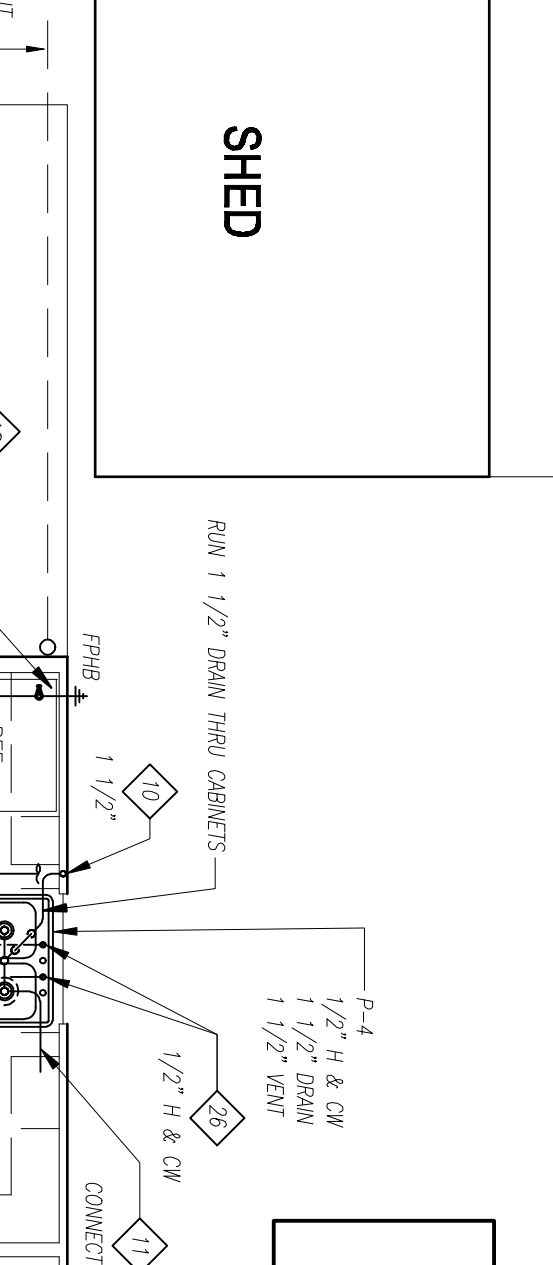
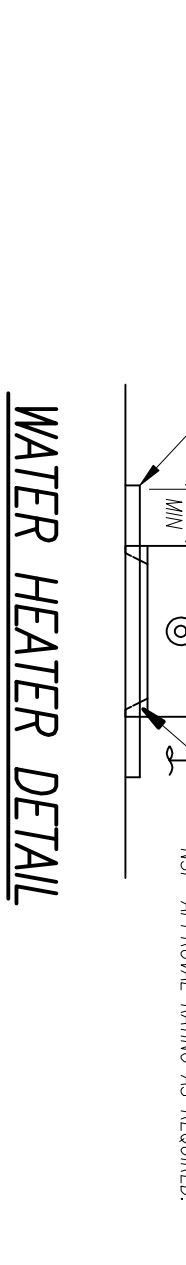
[illegible]

- [illegible]

WATER METER NOTES:

-
- Diagram illustrating the connection of a floor drain to the main sewer line, showing the required components and materials:
- WASTE, MINIMUM 1/2" HARD COPPER**: The main sewer line.
 - NAREST DOMESTIC COLD WATER SUPPLY LINE OF ADEQUATE SIZE AND FLOW TO ACTIVATE PRIMER VALVE**: The water supply line for the primer.
 - VACUUM BREAKER**: Installed on the water supply line to prevent backflow.
 - PRIMER**: The primer valve assembly.
 - STEEL WELDING NOZZLE**: Used for welding the primer valve to the main sewer line.
 - MINIMUM 1/2" HARD COPPER**: The pipe connecting the primer valve to the main sewer line.
 - 1/2" SOFT COPPER PRIMER LINE (RUN CONCEALED)**: The primer line connecting the primer valve to the floor drain.
 - FLOOR DRAIN WITH REMOVABLE STRAINER**: The floor drain assembly.
 - CEILING OR UNDER COUNTER, PROVIDE ACCESS FOR INSPECTION AND MAINTENANCE**: The access point for the primer valve.
 - TO ADDITIONAL FLOOR DRAINS (WHERE APPLICABLE)**: The connection to other floor drains.
 - INSULATED 12" MINIMUM AFT**: The air gap fitting installed underneath the trap seal.
 - APPLY COUPLINGS WITH ANGLE/SLAVE SHIMMED AT 11/12 IN. ACROSS WIRE DRAIN**: The coupling used to connect the primer valve to the floor drain.
 - WHERE THERE WILL BE NO COUSE DRAIN, OR PROVIDE PROTECTIVE COVER AND DRAIN**: The protective cover and drain for the primer valve.
 - DISTRIBUTION UNIT BY THE SAME MANUFACTURER OF TRAP SEAL PRIMER VALVE**: The distribution unit for the primer valve.
 - WHERE REQUIRED FOR SERVING MULTIPLE FLOOR DRAIN TRAPS, INSTALL PER MANUFACTURER'S REQUIREMENTS**: The installation requirements for multiple floor drains.

	MAINTAIN BOWL
--	---------------



- ## NOTES TO WATER HEATER DETAIL:

WATER HEATER DETAIL

