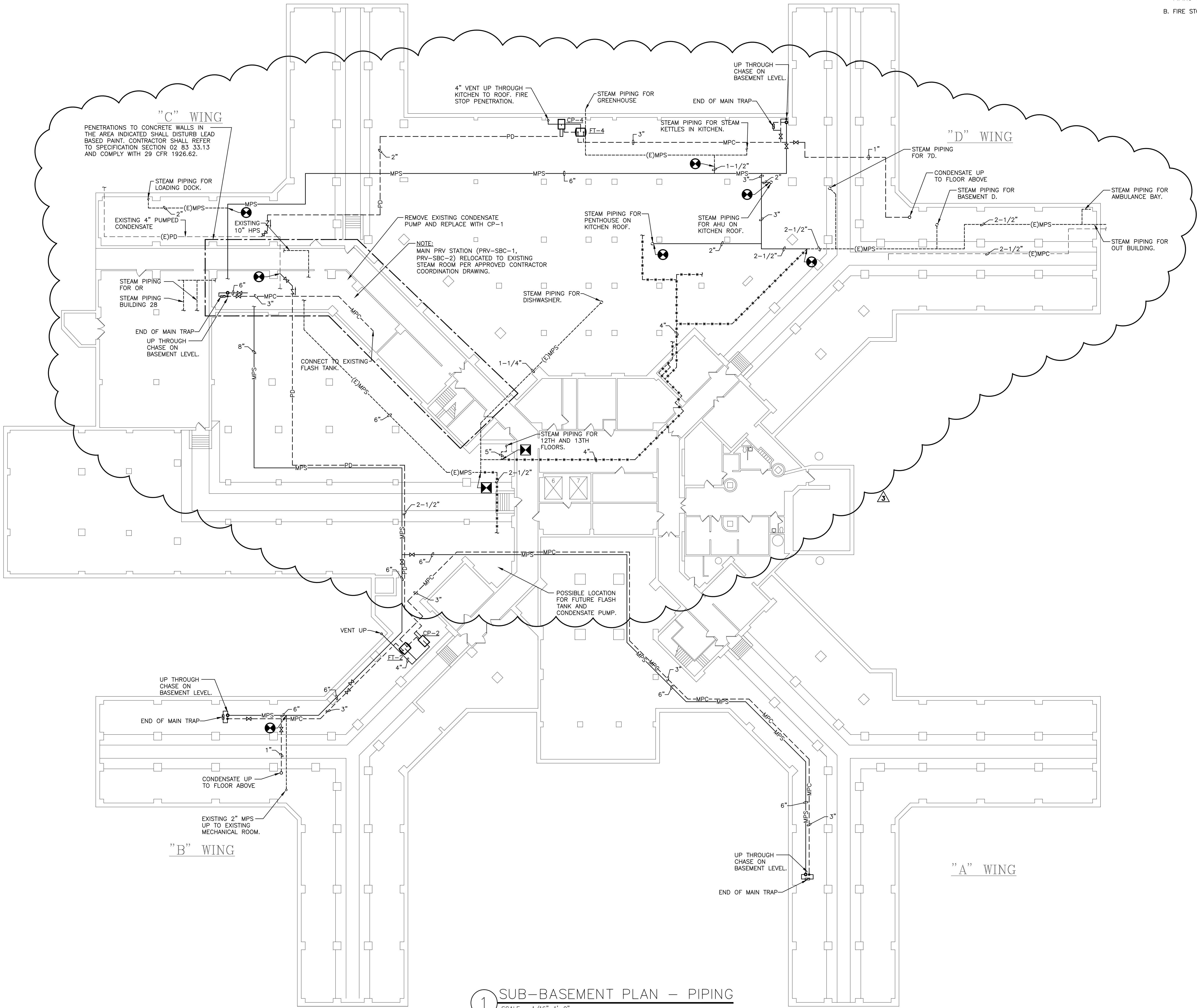
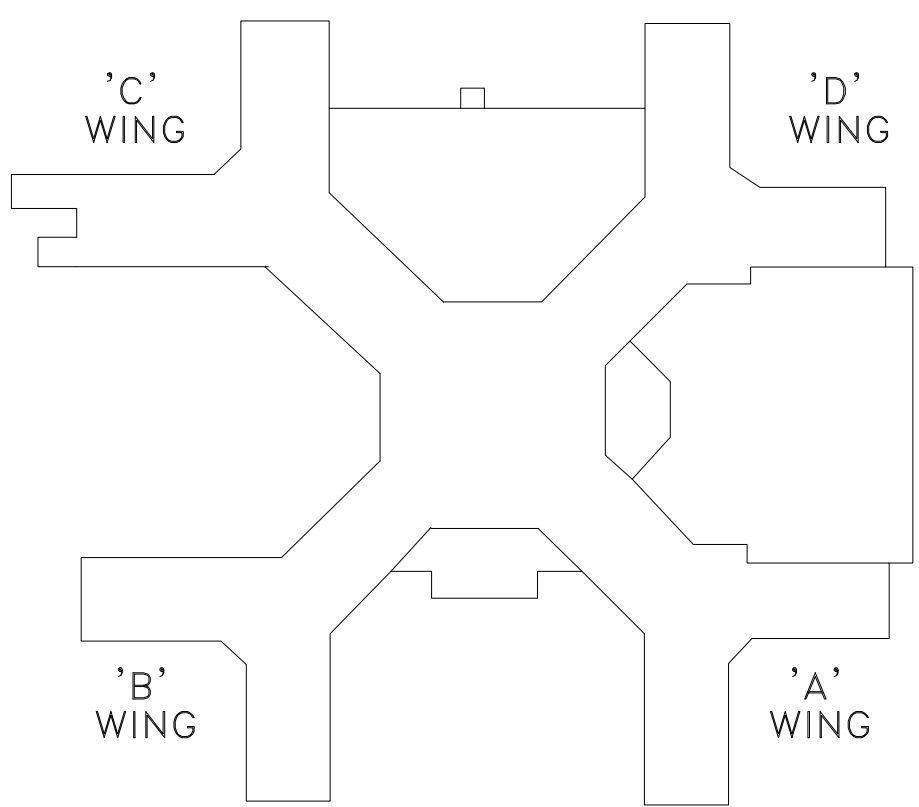


three inches = one foot  
one and one-half inch = one foot  
one inch = one foot  
three-quarters inch = one foot  
one-half inch = one foot  
one-quarter inch = one foot  
three-eighths inch = one foot  
one-eighth inch = one foot

GENERAL NOTES:  
A. REMOVE EXISTING PIPING LABELS AND PROVIDE NEW LABELS TO EXISTING LPS PIPING CHANGING TO MPS.  
B. FIRE STOP ALL PIPING PENETRATION THROUGH STAIR AND CORRIDOR WALLS.



1 SUB-BASEMENT PLAN - PIPING  
SCALE - 1/16"=1'-0"



KEY PLAN  
SCALE: NONE

REVISION 3 - EXISTING PIPING REV.	5/5/14
REVISION 2 - COND. PUMP REVISION	2/17/14
REVISION 1	3/14/13
ISSUED FOR BID	2/15/13
Revisions	Date

VA WESTERN NEW YORK HEALTHCARE SYSTEM  
3495 BAILEY AVENUE  
BUFFALO, NEW YORK 14215

**RAM-TECH ENGINEERS**  
Syracuse, NY • Buffalo, NY • Philadelphia, PA  
RAM-TECH Engineers  
of Buffalo, P.C.  
phone: 716-833-7716  
fax: 716-832-6373  
www.ramtechengineers.com

Architect

stamp

CARDIOLOGY MANAGER

DATE

ENGINEERING MANAGER

DATE

INFECTION CONTROL

DATE

CARELINE MANAGER

DATE

SAFETY OFFICER

DATE

CHIEF OF STAFF

DATE

Drawing Title

SUB-BASEMENT PLAN - MECHANICAL

Project Title

REPLACE STEAM RISERS

Date

February 15, 2013

Station No.

52B

Building Number

1

Checked

MDR

Drawn

MMW

Location

V.A.M.C. BUFFALO, NEW YORK

11-116-M100

