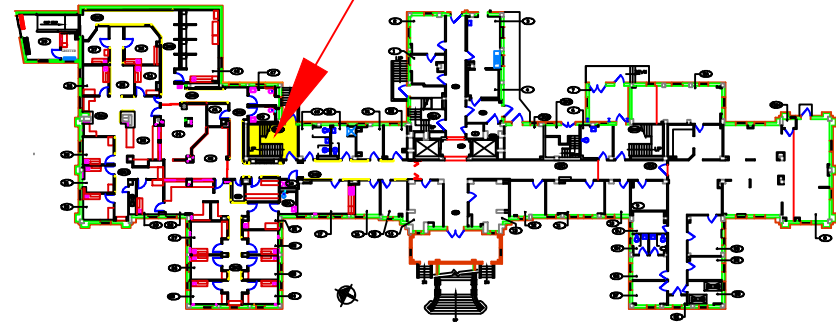


Remove all wall material (lath, plaster & components / 24" wide) and pipe insulation from slab to slab and between floors so condensate pipe can be removed and replaced. Include adjacent flanges and valves to join to existing pipe.

NORTH STAIRWELL



Building 1  
Basement Floor Plan

All work to be in accordance with N.E.P.A., NATIONAL, STATE AND CITY CODES & ORDINANCES		Approved: Architect	Date	Approved: Fire Chief	Date	Approved: Energy Engineer	Date	Drawing Title	Project Title	Date
		Approved: Logistics Manager		Approved: Safety		Approved: Safety Engineer		B-1 North Stair - Ground Level	B1 & B33 ACM AbateMENTS	05/23/2014
		Approved: Environmental Mgr		Approved: Industrial Hygiene		Approved: Industrial Hygiene		Building No.	Checked	WCC
		Approved: Health & Safety		Approved: Safety Officer		Approved: Safety Officer		1		
								Approved: Chief Engineer	Date	
								Approved: Section Leader Director	Date	
								CANANDAIGUA, NEW YORK		

V.A. 528A5-14-578 AB-1 2 of 6
--