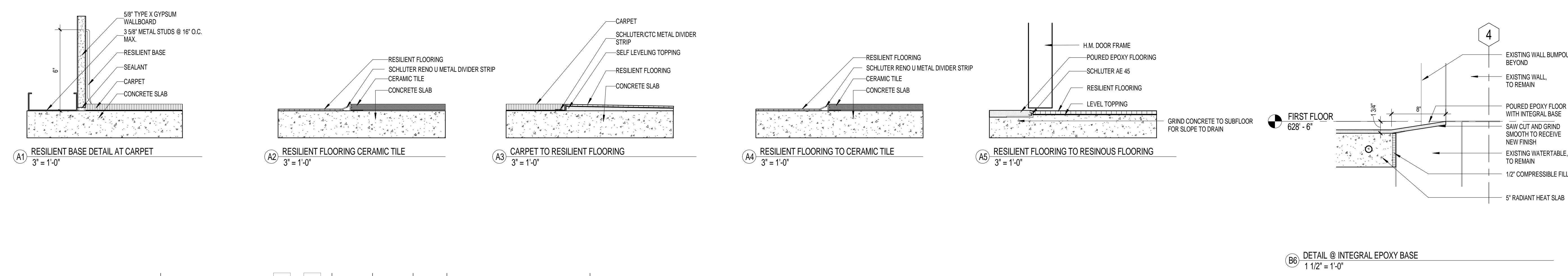
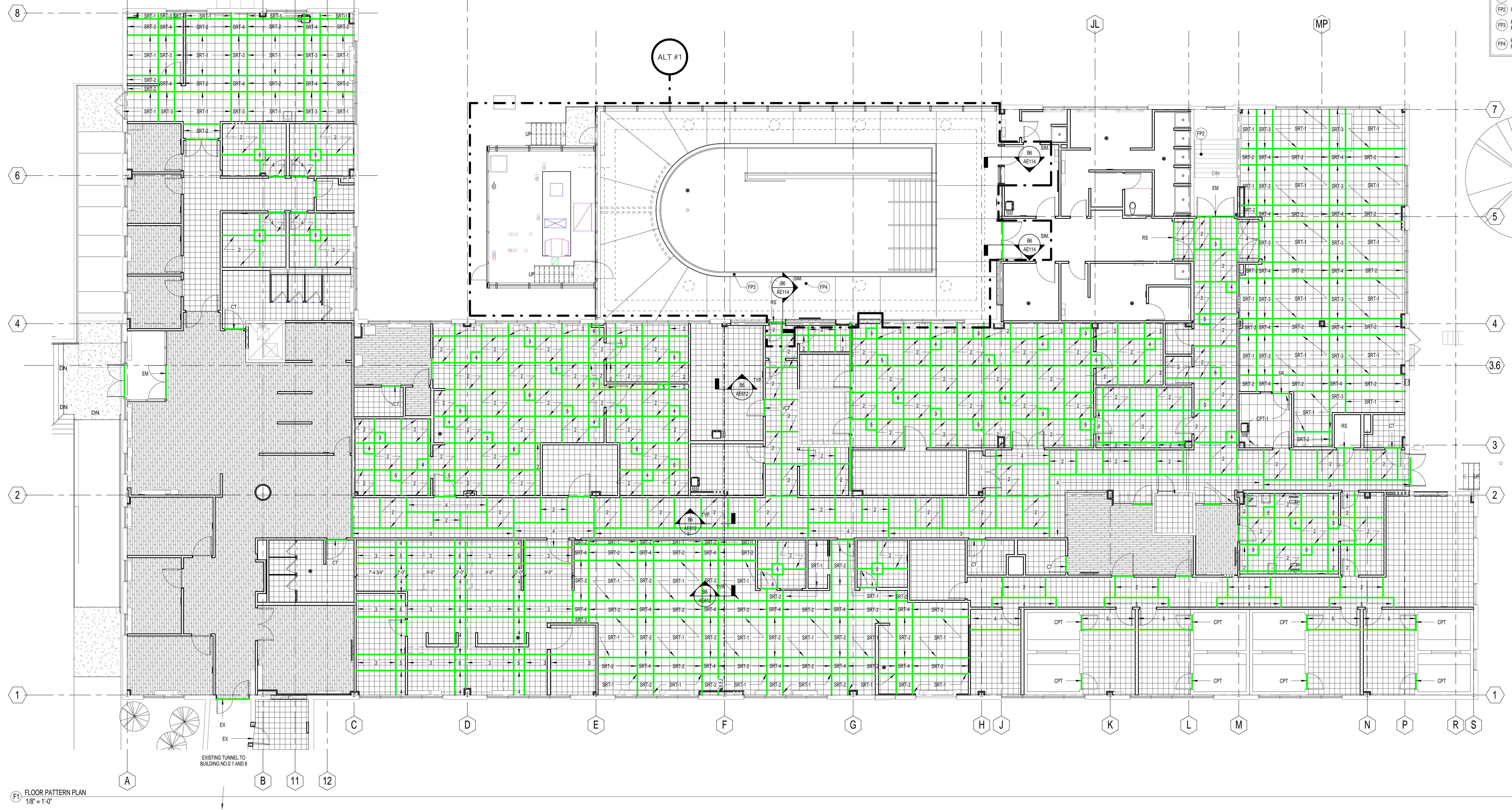


three inches = one foot
one and one half inches = one foot
one inch = one foot
three quarters inch = one foot
one half inch = one foot
three eighths inch = one foot
one quarter inch = one foot
one eighth inch = one foot



- FLOOR PATTERN GENERAL NOTES**
- PRIOR TO ORDERING MATERIAL, CONTRACTOR SHALL SUBMIT TO ARCHITECT COORDINATED FLOOR PATTERN PLANS FOR REVIEW AND APPROVAL. THE FLOOR PATTERN PLAN SHALL SHOW COMPLETE LAYOUTS, DIMENSIONS AND STARTING POINTS.
 - ALL FLOOR SUBSTRATES ARE TO BE COMPLETELY FREE OF DIRT AND ADHESIVE RESIDUE PRIOR TO FLOOR INSTALLATION.
 - ALL FLOOR SUBSTRATES ARE TO BE TESTED FOR MOISTURE AND ALKALI PRIOR TO FLOOR INSTALLATION AS PER MANUFACTURER'S RECOMMENDATION. VERIFY WITH MATERIAL INSTALLATION INSTRUCTIONS.
 - ALL CERAMIC TILE FLOORING TO HAVE MARBLE THRESHOLDS AS PER SPECIFICATIONS.
 - ALL FLOORING TO CONTINUE UNDER ALL CASEWORK.
 - SEAMLESS RUBBER FLOORING (SR) TO BE COLD WELDED, UNLESS NOTED OTHERWISE.
 - VCT GRANT TO RUN IN (1) DIRECTION, PERPENDICULAR TO LONG AXIS OF ROOM.
 - ALL VCT GRIDS ARE TO BE CONTINUOUSLY RUN FROM ONE SPACE TO ANOTHER UNLESS NOTED OTHERWISE.
 - SHEET VINYL WITH A PATTERN REPEAT, SHALL BE INSTALLED WITH SEAMS PROPERLY MATCHED. IF SHEET VINYL IS USED WITH PRECISE PATTERN INLAY, UTI METAL TEMPLATE TO CUT SHEET VINYL.
- FLOOR PATTERN KEYNOTES**
- FP1 PROVIDE LEVEL TRANSITION BETWEEN NEW AND EXISTING FLOORING
 - FP2 INSTALL RUBBER STAIR TREADS (RST-1) ON STAIRS
 - FP3 PROVIDE LEVEL TRANSITION BETWEEN POOL DECK MATERIAL AND RESINOUS FLOORING
 - FP4 PROVIDE LEVEL TRANSITION BETWEEN POOL DEPTH TILES AND RESINOUS FLOORING



CONSULTANTS:		PROJECT MANAGER:		Project Number 3627		Scale As indicated		Drawing Title FIRST FLOOR - FLOOR PATTERN PLAN		Project Title RENOVATE BUILDING 69		VA Project Number 542-CSI-203		Office of Facilities Management							
Project Manager BRAY MOONEY CONSULTING		Architect ARRAY HEALTHCARE FACILITIES SOLUTIONS		Structural Engineer WZG, STRUCTURAL CONSULTING ENGINEERS		MEP/FP Engineer APOGEE CONSULTING GROUP		Civil Engineer GUIDON DESIGN		Fire Protection Consultant HARRINGTON GROUP		Cost Estimator BRAY MOONEY CONSULTING				Acoustic Consultant ATLANTIC AQUATIC ENGINEERING		Associate Architects W. COOK ARCHITECTS		Building Number 69	
410 E. 21 STREET CHESTER, PA. 19013 Tel: (610) 872-3716		2520 RENAISSANCE BLVD., SUITE 110 KING OF PRUSSIA, PA. 19406 Tel: (610) 270-0599		P.O. BOX 24 40 LITTLE ROAD ZIEGLERSVILLE, PA. 19492 Tel: (610) 270-3194		7330 CHAPEL HILL ROAD, SUITE 202 RALEIGH, NC. 27606 Tel: (919) 859-7420		2453 N. DELAWARE STREET INDIANAPOLIS, IN. 46205 Tel: (317) 800-6388		7508 E. INDEPENDENCE BLVD., SUITE 116 CHARLOTTE, NC. 28277 Tel: (704) 531-9077		410 E. 21 STREET CHESTER, PA. 19013 Tel: (610) 872-3716				1823 DEEP RUN ROAD PIPERVILLE, PA. 18447 Tel: (215) 766-0409		1251 ROMANSVILLE ROAD COATESVILLE, PA. 19320 Tel: (610) 383-4460		Drawing Number AE114	
Issued for Bid 12-13-13		Revisions		Date				Approved: Project Director		Location 1400 Black Horse Hill, Coatesville, PA		Date 1/22/2014		Checked TN		Drawn JTM		Dwg. 19 of 86			