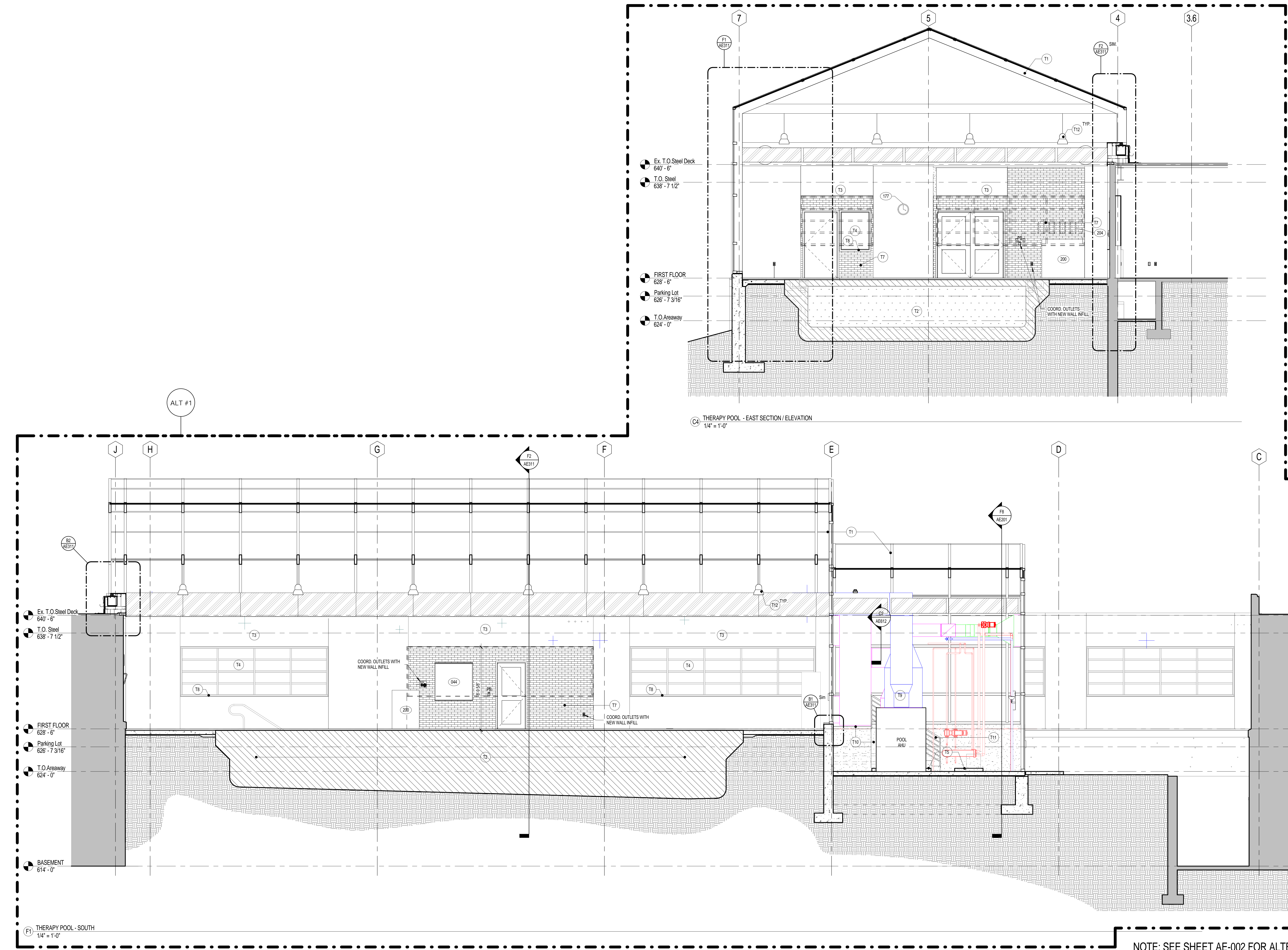


three inches = one foot
one and one half inches = one foot
one inch = one foot
three quarters inch = one foot
one half inch = one foot
three eighths inch = one foot
one quarter inch = one foot
one eighth inch = one foot
one eighth inch = one foot



- ### ARCHITECTURAL GENERAL NOTES
- SEE SHEET AE704 FOR EQUIPMENT SCHEDULE.
 - SEE SHEET AE701 FOR DOOR SCHEDULE.
 - SEE SHEET AE701 FOR WINDOW SCHEDULE.
 - SEE SHEET AE702 FOR TOILET ACCESSORY SCHEDULE.
 - SEE SHEET AE704 FOR FINISH SCHEDULE.

- ### THERAPY POOL ELEVATION KEYNOTES
- T1 POOL ENCLOSURE, BY OTHERS. REFER TO VENDOR DRAWINGS FOR MORE INFORMATION.
 - T2 POOL, BY OTHERS. REFER TO VENDOR DRAWINGS FOR MORE INFORMATION.
 - T3 EXISTING PRECAST CONCRETE PANEL TO REMAIN.
 - T4 EXISTING WINDOW, TO REMAIN. PROVIDE POLYCARBONATE PANELS TO MATCH POOL ENCLOSURE. TO BE REVIEWED BY ARCHITECT.
 - T5 4" HOUSEKEEPING PAD. REFER TO MECHANICAL DRAWINGS FOR SIZE AND LOCATION.
 - T6 NOT USED.
 - T7 NEW BRICK WALL TO MATCH EXISTING.
 - T8 WINDOW SILL TO BE CLEANED AND RETURNED TO ORIGINAL FINISH.
 - T9 AIR HANDLING UNIT. COORDINATE WITH MECHANICAL DRAWINGS.
 - T10 CONCRETE STAIR AND LANDING. REFER TO STRUCTURAL DRAWINGS FOR MORE INFORMATION.
 - T11 PIPE RAILING TO MATCH POOL RAILING.
 - T12 PENDANT LIGHT FIXTURE SUSPENDED FROM POOL ENCLOSURE STRUCTURE. REFER TO ELECTRICAL DRAWINGS FOR FIXTURE TYPE.

- ### ELEVATION MATERIAL LEGEND
- 1" METAL PANEL, PER MANUFACTURER
 - 1" POLYCARBONATE, TRANSLUCENT, PER MANUFACTURER
 - 1" INSULATED GLASS
 - 0.125" COMPOSITE ALUMINUM PANEL

NOTE: SEE SHEET AE-002 FOR ALTERNATES

FULLY SPRINKLERED
ISSUED FOR BID

CONSULTANTS:										PROJECT MANAGER:			Project Number 3627	Scale As indicated	Drawing Title ENLARGED ELEVATIONS - THERAPY POOL			Project Title RENOVATE BUILDING 69			VA Project Number 542-CSI-203		Office of Facilities Management		
Project Manager		Architect		Structural Engineer		MEP/FP Engineer		Civil Engineer		Fire Protection Consultant		Cost Estimator		Aquatic Consultant		Associate Architects		Building Number 69		Drawing Number					
BRAY MOONEY CONSULTING		ARRAY HEALTHCARE FACILITIES SOLUTIONS		WZG, STRUCTURAL CONSULTING ENGINEERS		APOGEE CONSULTING GROUP		GUIDON DESIGN		HARRINGTON GROUP		BRAY MOONEY CONSULTING		ATLANTIC AQUATIC ENGINEERING		W. COOK ARCHITECTS				AE301					
410 E. 21 STREET CHESTER, PA 19013 Tel: (610) 872-3716		2520 RENAISSANCE BLVD., SUITE 110 KING OF PRUSSIA, PA 19406 Tel: (610) 270-0599		P.O. BOX 24 40 LITTLE ROAD ZIEGLERVILLE, PA 19422 Tel: (610) 287-3194		7330 CHAPEL HILL ROAD, SUITE 202 RALEIGH, NC 27606 Tel: (919) 859-7420		2453 N DELAWARE STREET SUITE 202 INDIANAPOLIS, IN 46205 Tel: (317) 600-6388		7508 E. INDEPENDENCE BLVD., SUITE 116 CHARLOTTE, NC 28227 Tel: (704) 531-9077		410 E. 21 STREET CHESTER, PA 19013 Tel: (610) 872-3716		1823 DEEP RUN ROAD PIPERSVILLE, PA 18947 Tel: (215) 786-0409		1251 ROMANSVILLE ROAD COATESVILLE, PA 19320 Tel: (610) 383-4460		Location 1400 Black Horse Hill, Coatesville, PA		Date 1/22/2014		Checked TN			Drawn BG
Revisions		Date																				Department of Veterans Affairs			