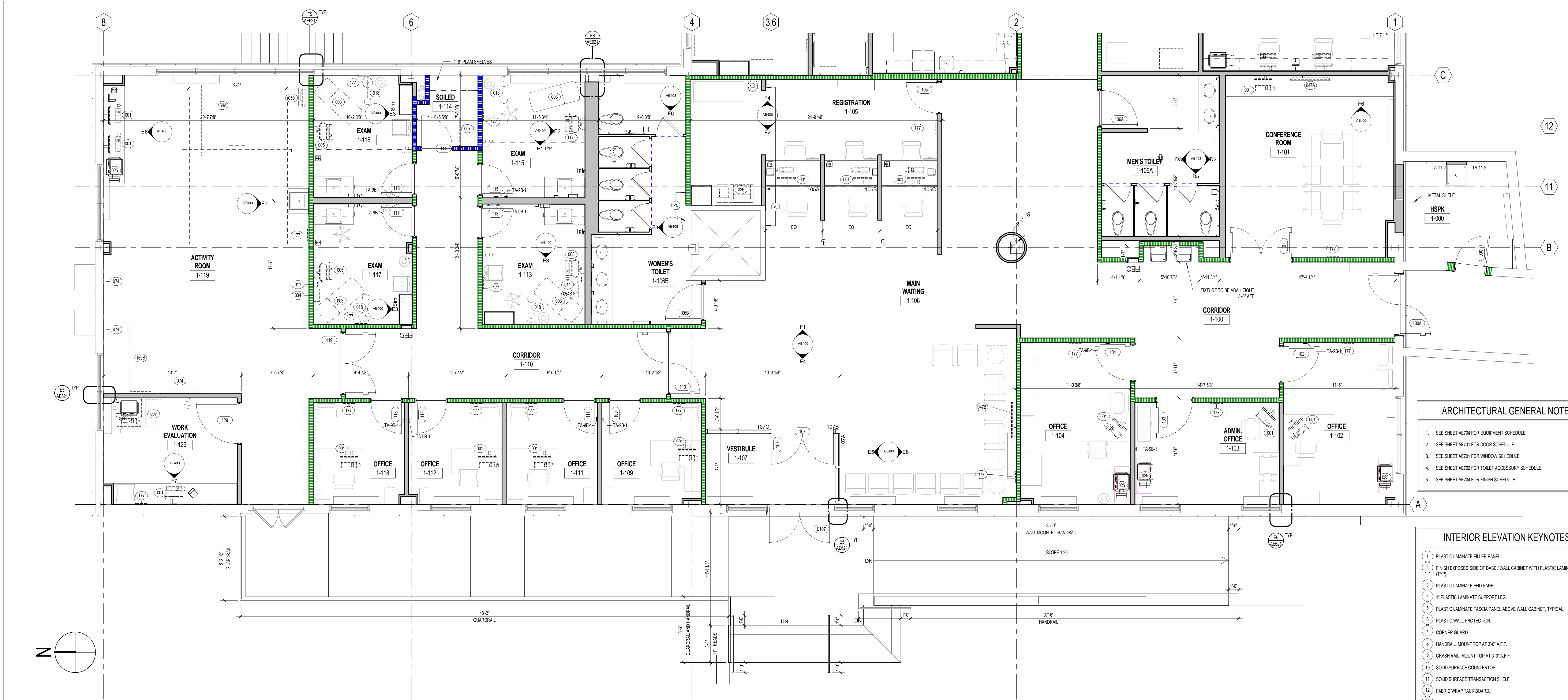
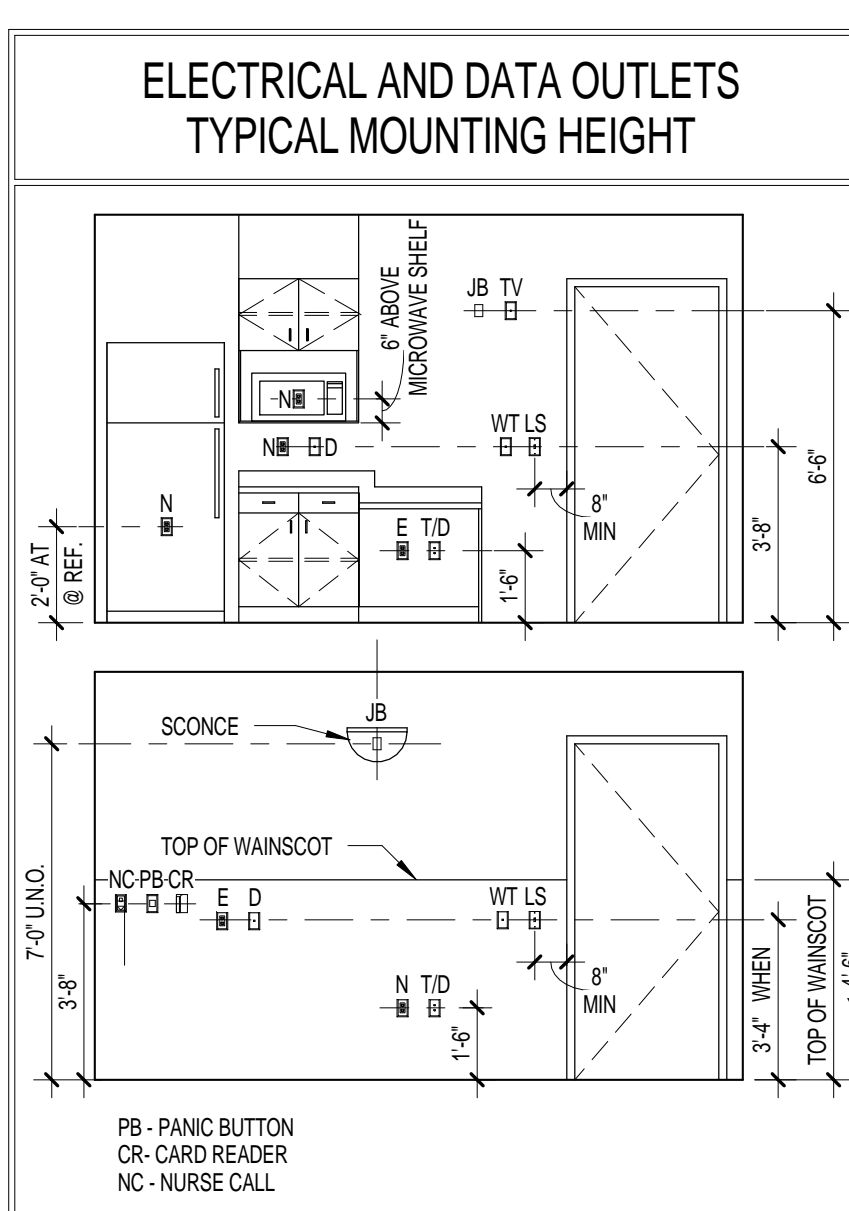
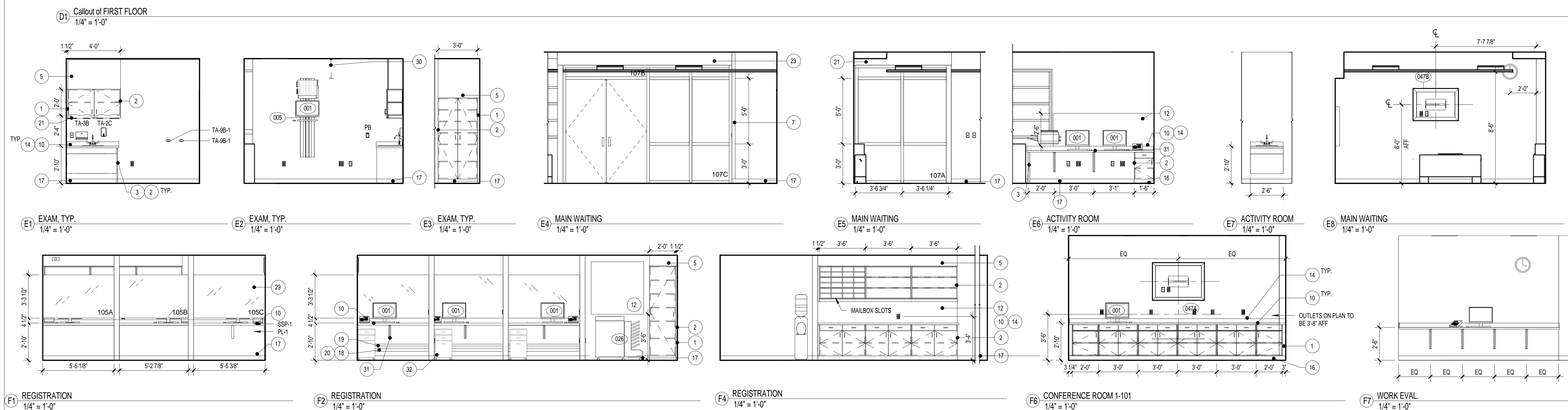


three inches = one foot
one and one half inches = one foot
one inch = one foot
three quarters inch = one foot
one half inch = one foot
three eighths inch = one foot
one quarter inch = one foot
one eighth inch = one foot



- ARCHITECTURAL GENERAL NOTES**
- SEE SHEET AE704 FOR EQUIPMENT SCHEDULE.
 - SEE SHEET AE701 FOR DOOR SCHEDULE.
 - SEE SHEET AE701 FOR WINDOW SCHEDULE.
 - SEE SHEET AE702 FOR TOILET ACCESSORY SCHEDULE.
 - SEE SHEET AE704 FOR FINISH SCHEDULE.

- INTERIOR ELEVATION KEYNOTES**
- PLASTIC LAMINATE FILLER PANEL.
 - FINISH EXPOSED SIDE OF BASE / WALL CABINET WITH PLASTIC LAMINATE. (TYP.)
 - PLASTIC LAMINATE END PANEL.
 - 1" PLASTIC LAMINATE SUPPORT LEG.
 - PLASTIC LAMINATE FASCIA PANEL ABOVE WALL CABINET, TYPICAL.
 - PLASTIC WALL PROTECTION.
 - CORNER GUARD.
 - HANDRAIL, MOUNT TOP AT 3'-0" A.F.F.
 - CRASH RAIL, MOUNT TOP AT 3'-0" A.F.F.
 - SOLID SURFACE COUNTERTOP.
 - SOLID SURFACE TRANSACTION SHELF.
 - FABRIC WRAP TACK BOARD.
 - WINDOW SILL TO BE CLEANED AND RETURNED TO ORIGINAL FINISH.
 - 4" HIGH SOLID SURFACE BACK AND SIDE SPLASHES.
 - LOCKER ROOM BENCH, TO BE RELOCATED FROM BUILDING 58.
 - SCHEDULED BASE AT RECESSED TOE KICK.
 - SCHEDULED BASE.
 - CONTINUOUS WIRE MOLD, REFER TO ELECTRICAL DRAWINGS.
 - CONTINUOUS "J" HANGER.
 - SEGMENTED REMOVABLE ACCESS PANEL.
 - TASK LIGHTING.
 - WALL SCONCE.
 - GYPSUM WALLBOARD SOFFIT, COORDINATE HEIGHT WITH SOUND BOOTH SELECTED BY VA.
 - STORAGE CABINET, NOT IN CONTRACT.
 - BOOKCASE, NOT IN CONTRACT.
 - METAL LOCKERS WITH SLOPED TOP, SEE SPECIFICATIONS.
 - GYPSUM WALLBOARD SOFFIT.
 - MILLYWORK TO BE LOCKABLE.
 - LAMINATE AND TEMPERED GLASS.
 - CUBICLE CURTAIN AND TRACK.
 - METAL SUPPORT BRACKET.
 - FURNITURE, N.I.C.
 - BRICK INFILL TO MATCH EXISTING CONSTRUCTION.
 - EXISTING ELECTRICAL PANEL TO REMAIN.
 - ROBE HOOK RACK WITH 8 DOUBLE HOOKS.



NOTE: SEE SHEET AE-002 FOR ALTERNATES

PROJECT MANAGER: Bray Mooney Consulting		Project Number 3627	Scale As indicated	Drawing Title FIRST FLOOR ENLARGED PLAN - ADMINISTRATION		Project Title RENOVATE BUILDING 69		VA Project Number 542-CSI-203		Office of Facilities Management
Approved: Project Director						Location 1400 Black Horse Hill, Coatesville, PA		Building Number 69		
Date 1/22/2014		Checked TN		Drawn BG		Drawing Number AE400		Dwg. 23 of 98		

CONSULTANTS:							
Project Manager BRAY MOONEY CONSULTING 410 E. 21 STREET CHESTER, PA 19013 Tel: (610) 872-3716	Architect ARRAY HEALTHCARE FACILITIES SOLUTIONS 2520 RENAISSANCE BLVD., SUITE 110 KING OF PRUSSIA, PA 19406 Tel: (610) 270-0599	Structural Engineer WZG, STRUCTURAL CONSULTING ENGINEERS P.O. BOX 24 40 LITTLE ROAD ZIEGLERVILLE, PA 19482 Tel: (610) 287-5194	MEP/FP Engineer APOGEE CONSULTING GROUP 7330 CHAPEL HILL ROAD, SUITE 202 RALEIGH, NC 27606 Tel: (919) 859-7420	Civil Engineer GUIDON DESIGN 2453 N DELAWARE STREET INDIANAPOLIS, IN 46205 Tel: (317) 600-6388	Fire Protection Consultant HARRINGTON GROUP 7508 E. INDEPENDENCE BLVD., SUITE 116 CHARLOTTE, NC 28227 Tel: (704) 531-9077	Cost Estimator BRAY MOONEY CONSULTING 410 E. 21 STREET CHESTER, PA 19013 Tel: (610) 872-3716	Acoustic Consultant ATLANTIC AQUATIC ENGINEERING 1823 DEEP RUN ROAD PIPERVILLE, PA 18047 Tel: (215) 788-0409
Associate Architects W. COOK ARCHITECTS 1251 ROMANSVILLE ROAD COATESVILLE, PA 19320 Tel: (610) 383-4460							