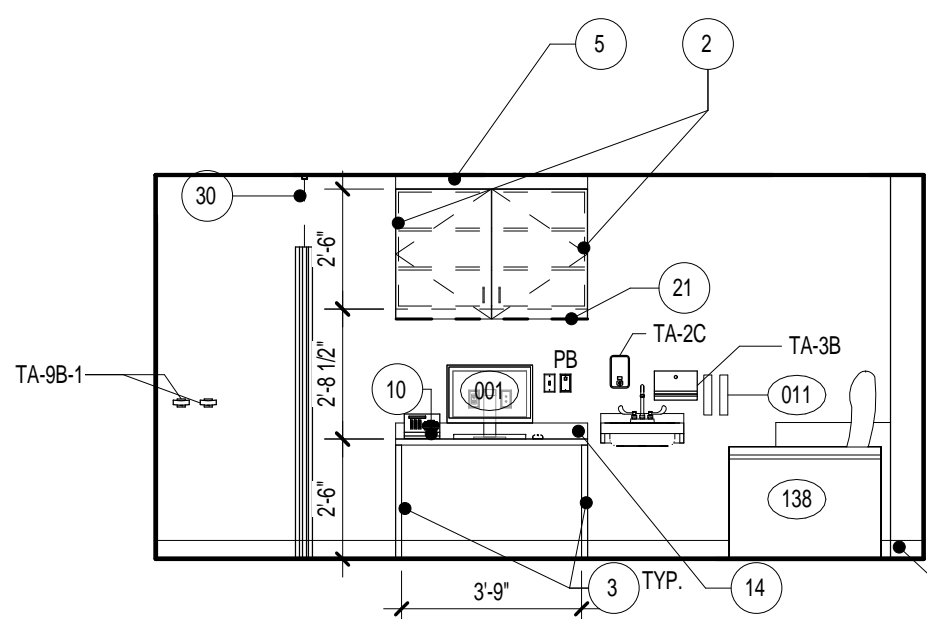
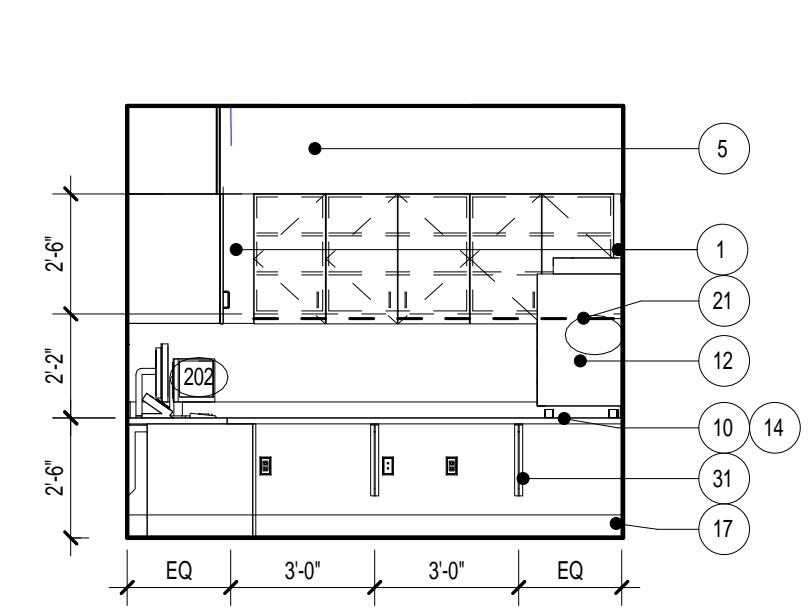


- ### ARCHITECTURAL GENERAL NOTES
- SEE SHEET AE04 FOR EQUIPMENT SCHEDULE.
 - SEE SHEET AE01 FOR DOOR SCHEDULE.
 - SEE SHEET AE01 FOR WINDOW SCHEDULE.
 - SEE SHEET AE02 FOR TOILET ACCESSORY SCHEDULE.
 - SEE SHEET AE04 FOR FINISH SCHEDULE.
- ### INTERIOR ELEVATION KEYNOTES
- PLASTIC LAMINATE FILLER PANEL.
 - FINISH EXPOSED SIDE OF BASE / WALL CABINET WITH PLASTIC LAMINATE (TYP).
 - PLASTIC LAMINATE END PANEL.
 - 1" PLASTIC LAMINATE SUPPORT LEG.
 - PLASTIC LAMINATE FASCIA PANEL ABOVE WALL CABINET, TYPICAL.
 - PLASTIC WALL PROTECTION.
 - CORNER GUARD.
 - HANDRAIL, MOUNT TOP AT 3'-0" A.F.F.
 - CRASH RAIL, MOUNT TOP AT 3'-0" A.F.F.
 - SOLID SURFACE COUNTERTOP.
 - SOLID SURFACE TRANSACTION SHELF.
 - FABRIC WRAP TACK BOARD.
 - WINDOW SILL TO BE CLEANED AND RETURNED TO ORIGINAL FINISH.
 - 4" HIGH SOLID SURFACE BACK AND SIDE SPLASHES.
 - LOCKER ROOM BENCH, TO BE RELOCATED FROM BUILDING 58.
 - SCHEDULED BASE AT RECESSED TOE KICK.
 - SCHEDULED BASE.
 - CONTINUOUS WIRE MOLD, REFER TO ELECTRICAL DRAWINGS.
 - CONTINUOUS "J" HANGER.
 - SEGMENTED REMOVABLE ACCESS PANEL.
 - TASK LIGHTING.
 - WALL SCONCE.
 - GYPSUM WALLBOARD SOFFIT. COORDINATE HEIGHT WITH SOUND BOOTH SELECTED BY VA.
 - STORAGE CABINET, NOT IN CONTRACT.
 - BOOKCASE, NOT IN CONTRACT.
 - METAL LOCKERS WITH SLOPED TOP, SEE SPECIFICATIONS.
 - GYPSUM WALLBOARD SOFFIT.
 - MILKWORK TO BE LOCKABLE.
 - LAMINATE AND TEMPERED GLASS.
 - CUBICLE CURTAIN AND TRACK.
 - METAL SUPPORT BRACKET.
 - FURNITURE, N.I.C.
 - BRICK INFILL TO MATCH EXISTING CONSTRUCTION.
 - EXISTING ELECTRICAL PANEL, TO REMAIN.
 - ROBE HOOK RACK WITH 8 DOUBLE HOOKS.

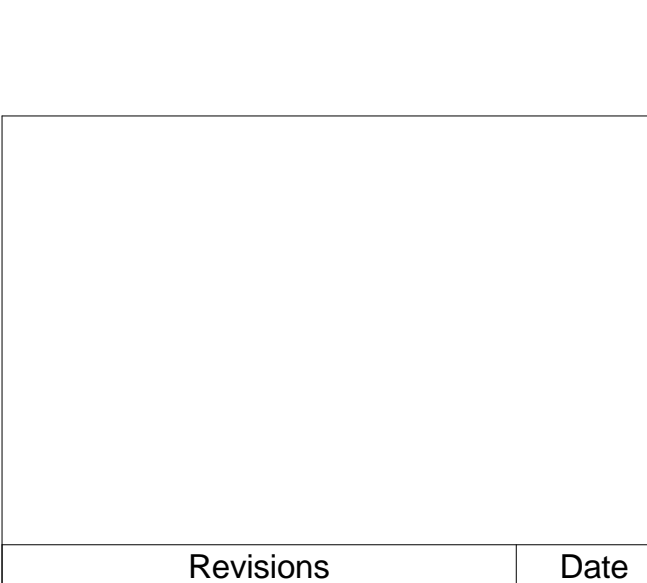
D1 ENLARGED FLOOR PLAN - AUDIOLOGY
1/4" = 1'-0"



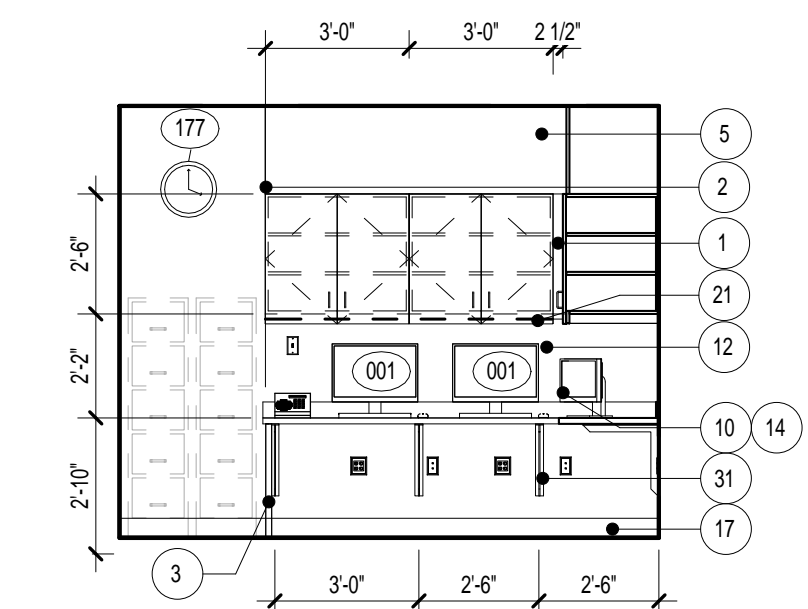
E1 TYP. TREATMENT ROOM
1/4" = 1'-0"



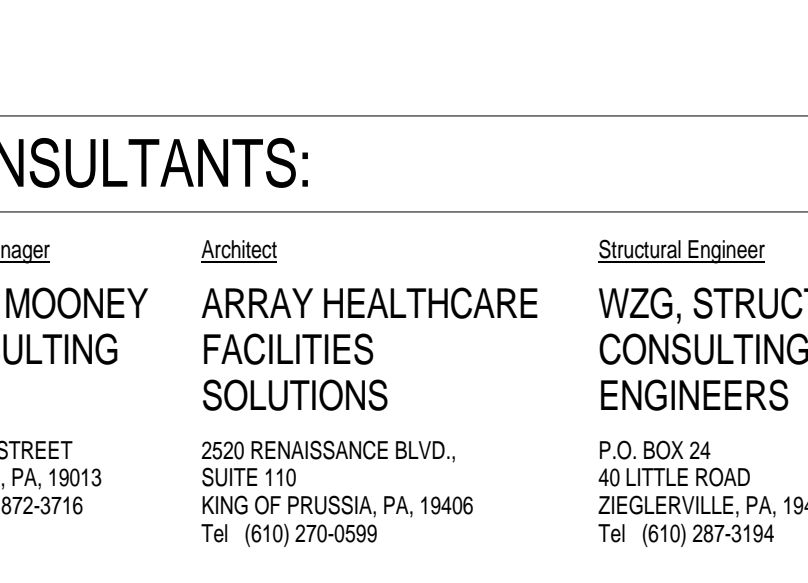
F1 SUPPORT OFFICE 1-405
1/4" = 1'-0"



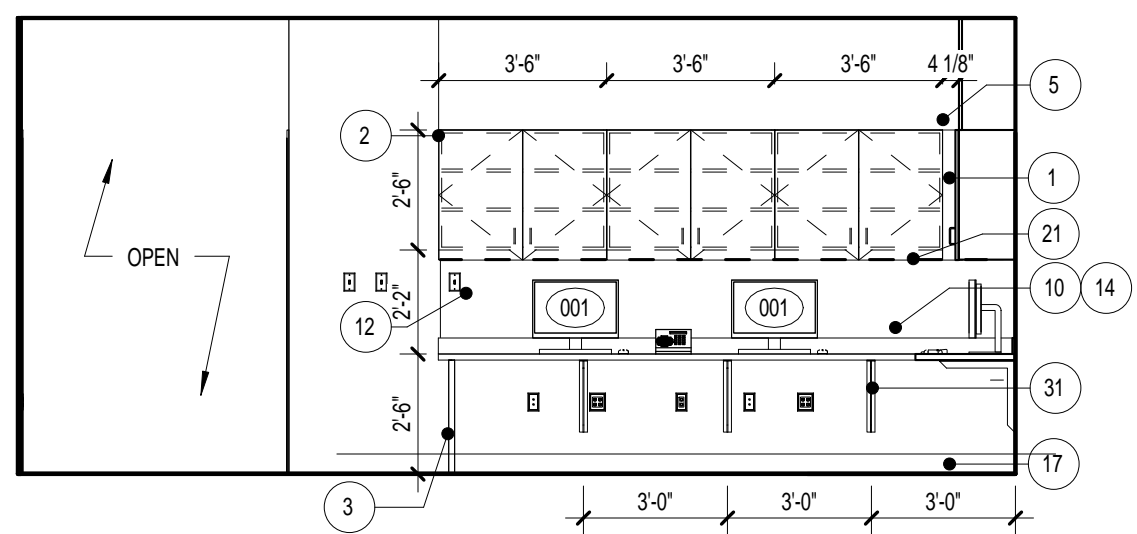
E2 TYP. TREATMENT ROOM
1/4" = 1'-0"



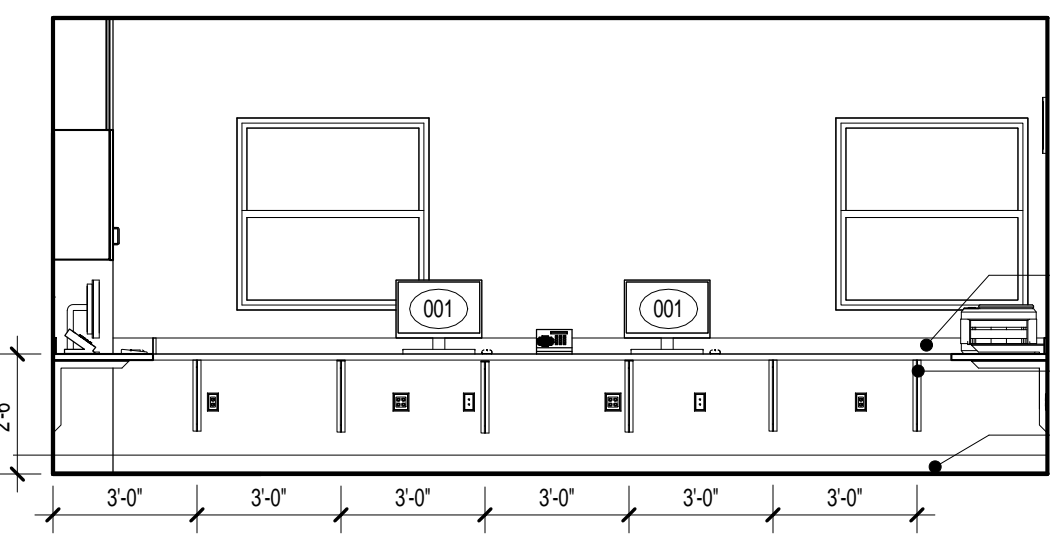
F2 SUPPORT OFFICE 1-405
1/4" = 1'-0"



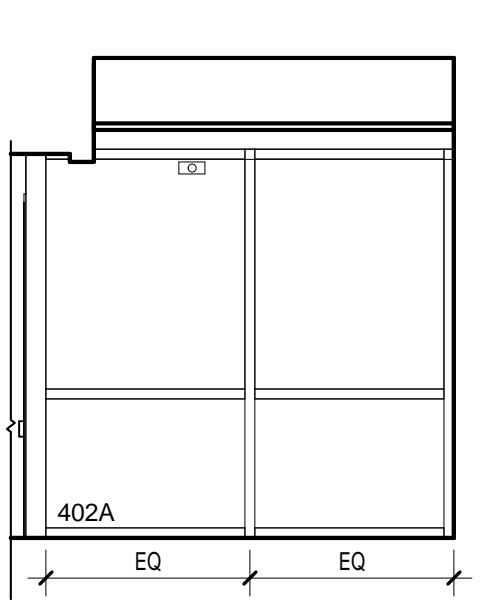
E3 SHARED OFFICE 1-412
1/4" = 1'-0"



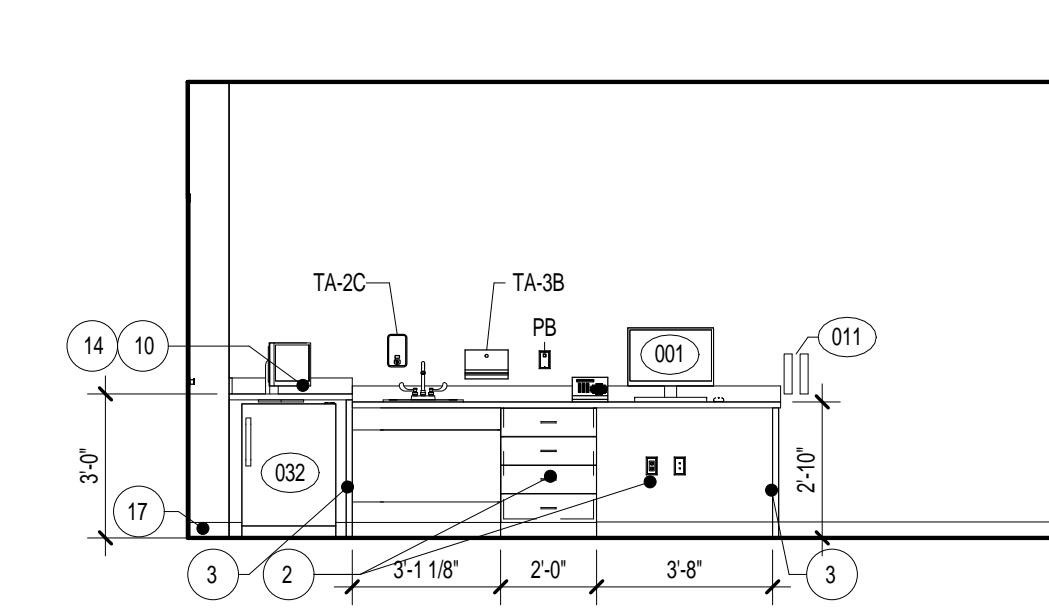
E5 SHARED OFFICE 1-412
1/4" = 1'-0"



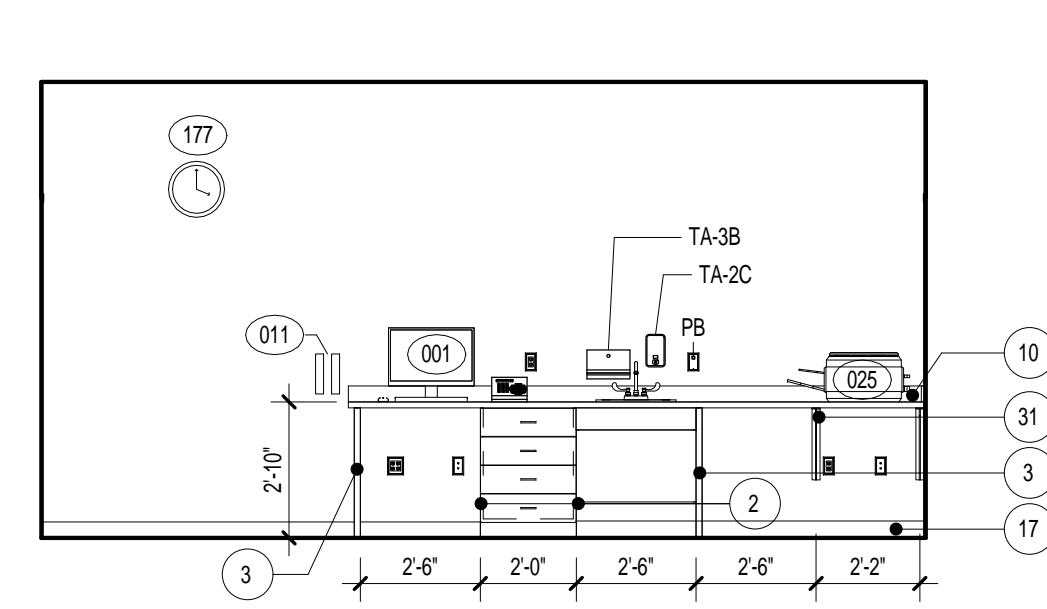
F4 WAITING
1/4" = 1'-0"



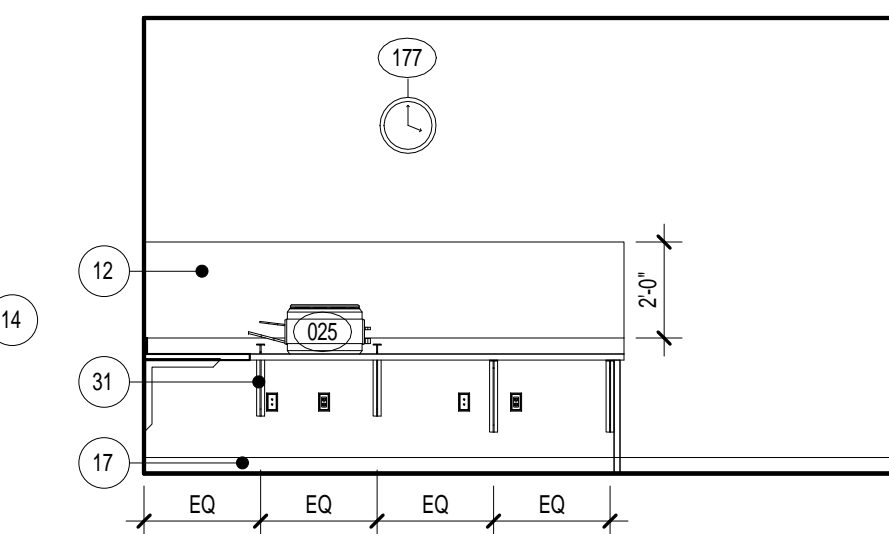
F5 TECHNICIAN'S WORKROOM 1-416
1/4" = 1'-0"



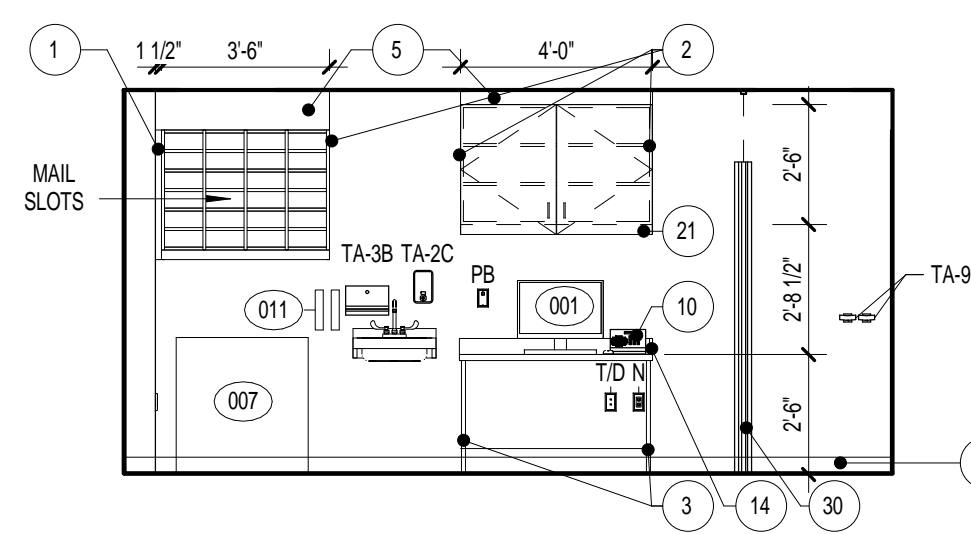
F6 TECHNICIAN'S WORKROOM 1-416
1/4" = 1'-0"



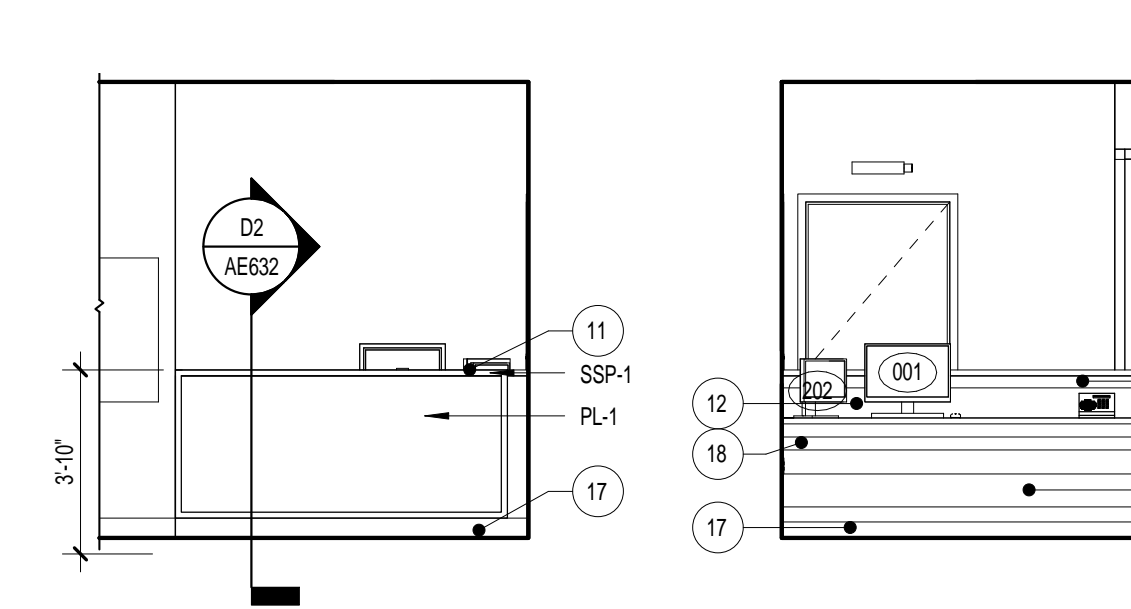
E8 SHARED OFFICE 1-412
1/4" = 1'-0"



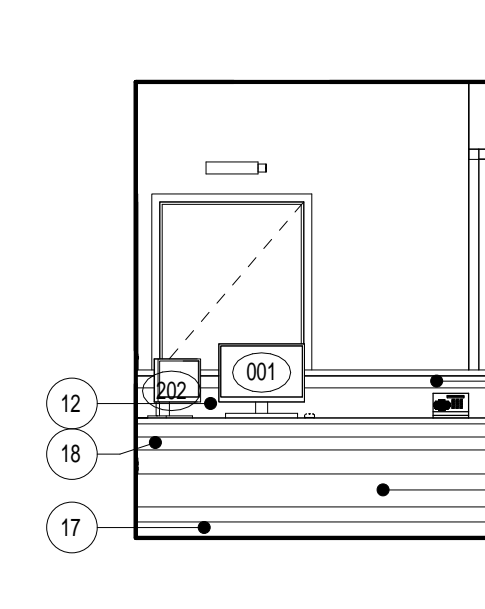
E9 TREATMENT 1-411
1/4" = 1'-0"



F7 RECEPTION 1-401
1/4" = 1'-0"



F8 RECEPTION 1-401
1/4" = 1'-0"



NOTE: SEE SHEET AE-002 FOR ALTERNATES

FULLY SPRINKLERED
ISSUED FOR BID

CONSULTANTS:

Project Manager
BRAY MOONEY
CONSULTING

410 E. 21 STREET
CHESTER, PA 19013
Tel: (610) 872-3716

Architect
ARRAY HEALTHCARE
FACILITIES
SOLUTIONS

2520 RENAISSANCE BLVD.,
SUITE 110
KING OF PRUSSIA, PA 19406
Tel: (610) 270-0599

Structural Engineer
WZG, STRUCTURAL
CONSULTING
ENGINEERS

P.O. BOX 24
40 LITTLE ROAD
ZIEGLERVILLE, PA 19482
Tel: (610) 287-5194

MEP/FP Engineer
APOGEE
CONSULTING
GROUP

7330 CHAPEL HILL ROAD,
SUITE 202
RALEIGH, NC 27606
Tel: (919) 859-7420

Civil Engineer
GUIDON DESIGN

2453 N DELAWARE STREET
INDIANAPOLIS, IN 46205
Tel: (317) 600-6388

Fire Protection Consultant
HARRINGTON
GROUP

7508 E. INDEPENDENCE
BLVD., SUITE 116
CHARLOTTE, NC 28277
Tel: (704) 531-0077

Cost Estimator
BRAY MOONEY
CONSULTING

410 E. 21 STREET
CHESTER, PA 19013
Tel: (610) 872-3716

Aquatic Consultant
ATLANTIC
AQUATIC
ENGINEERING

1823 DEEP RUN ROAD
PIPERSVILLE, PA 18947
Tel: (215) 788-0409

Associate Architects
W. COOK
ARCHITECTS

1251 ROMANVILLE ROAD
COATESVILLE, PA 19320
Tel: (610) 383-4460

PROJECT MANAGER:



Project Number
3627

Scale
As indicated

Drawing Title

FIRST FLOOR ENLARGED PLAN - AUDIOLOGY

Approved: Project Director

Project Title

RENOVATE BUILDING 69

Location

1400 Black Horse Hill, Coatesville, PA

Date

1/22/2014

Checked

TN

Drawn

BG

VA Project Number

542-CSI-203

Building Number

69

Drawing Number

AE404

Dwg. 27 of 86

Office of
Facilities
Management

Department of
Veterans Affairs