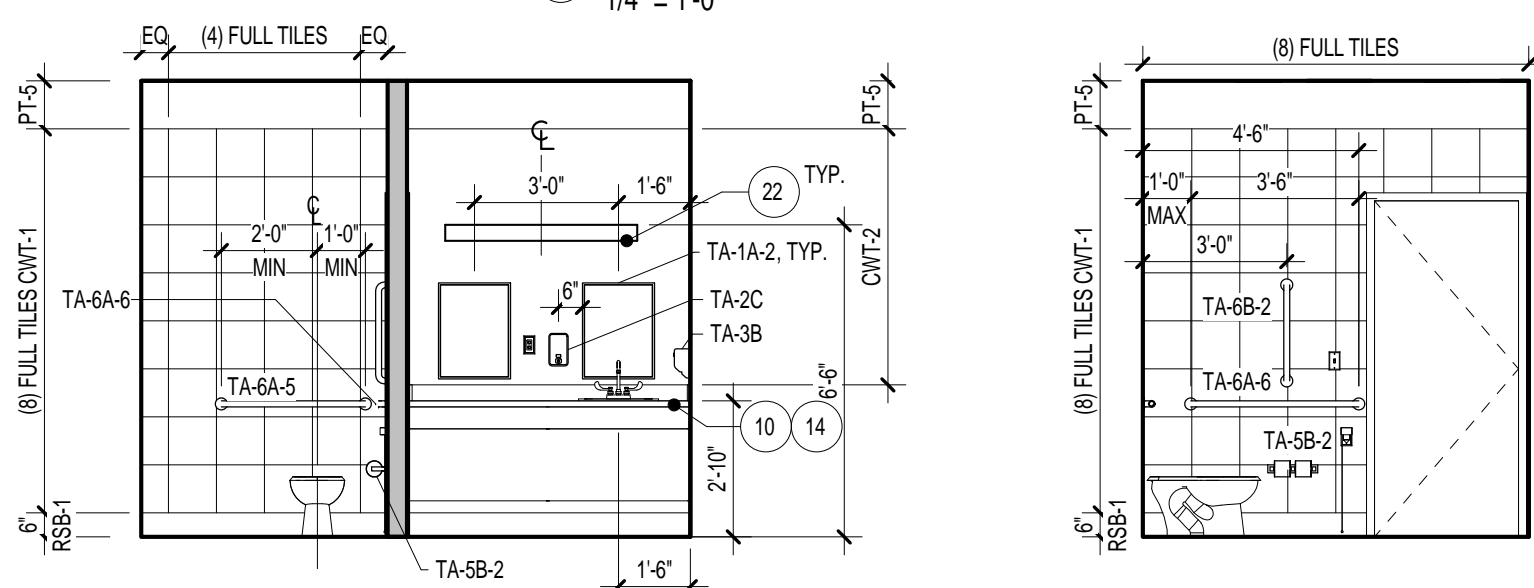
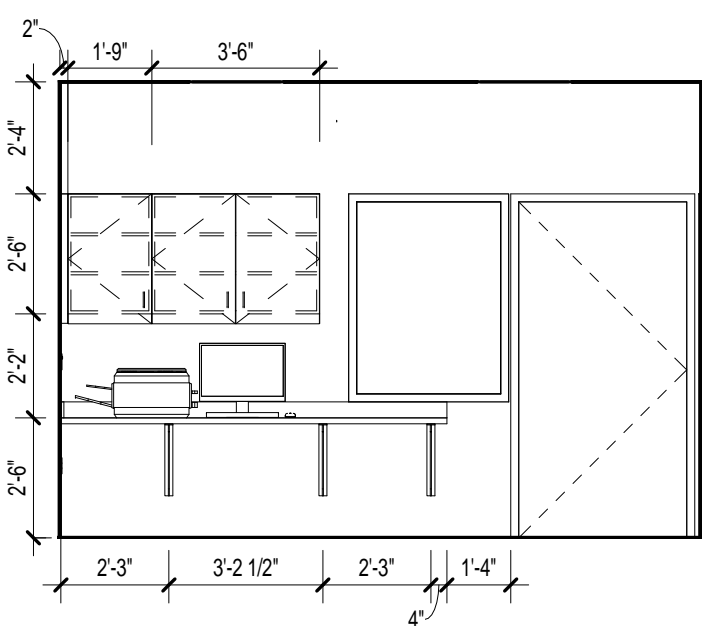


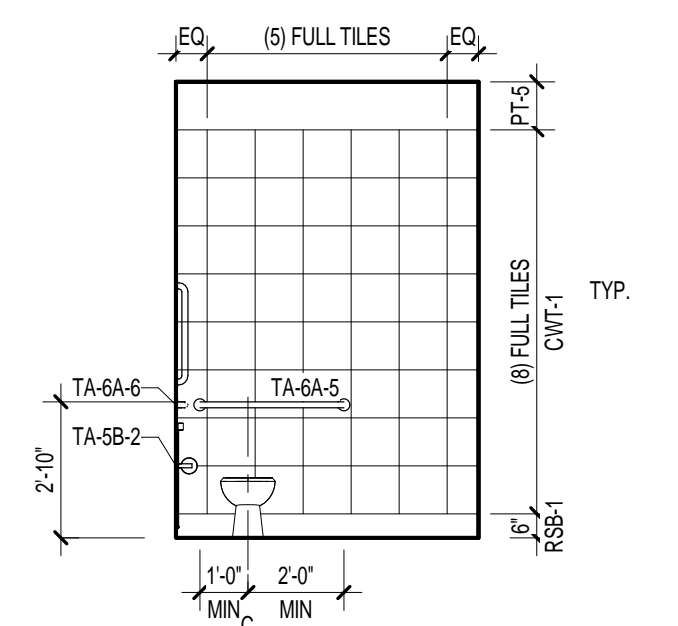
(D1) ENLARGED FLOOR PLAN - THERAPY POOL  
1/4" = 1'-0"



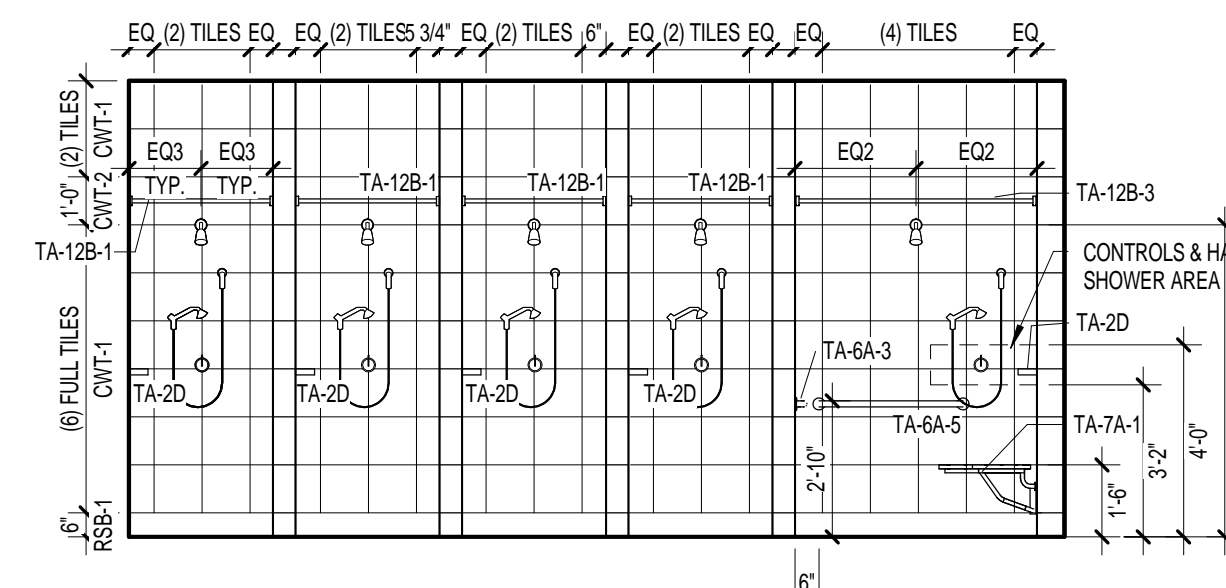
(E1) MEN'S SHOWER/ LOCKER  
1/4" = 1'-0"



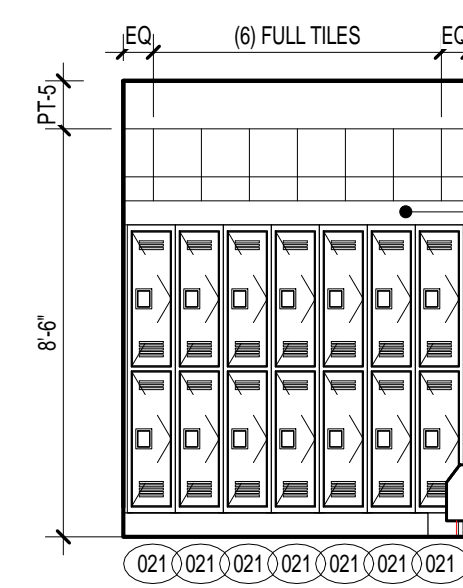
(E2) MEN'S SHOWER/ LOCKER  
1/4" = 1'-0"



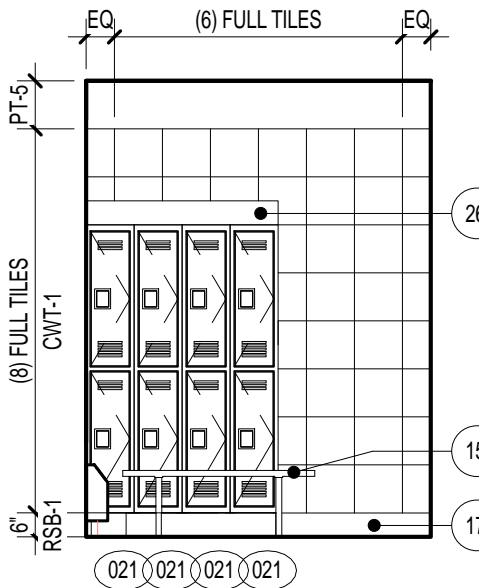
(E3) MEN'S SHOWER/ LOCKER  
1/4" = 1'-0"



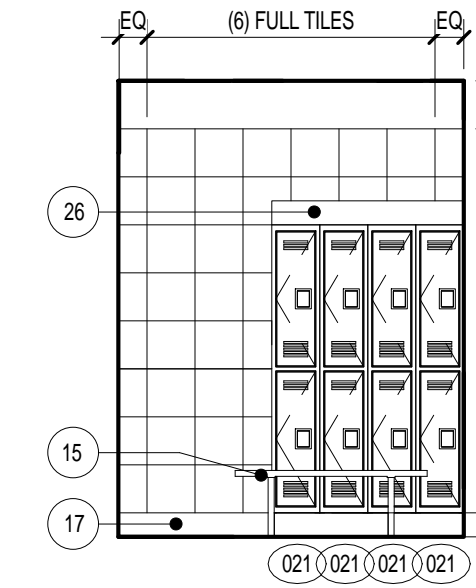
(E4) MEN'S SHOWER / LOCKER 1-605  
1/4" = 1'-0"



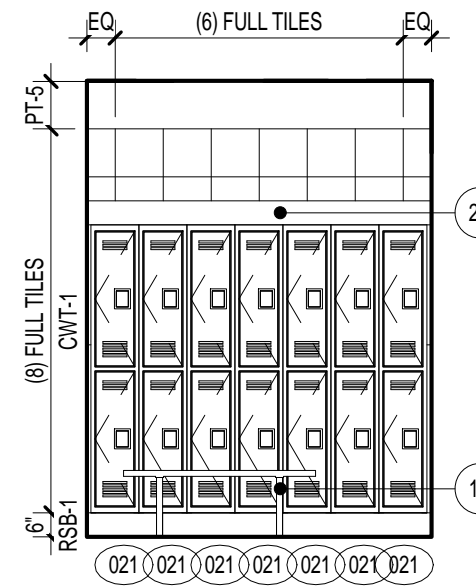
(E5) MEN'S SHOWER / LOCKER 1-605  
1/4" = 1'-0"



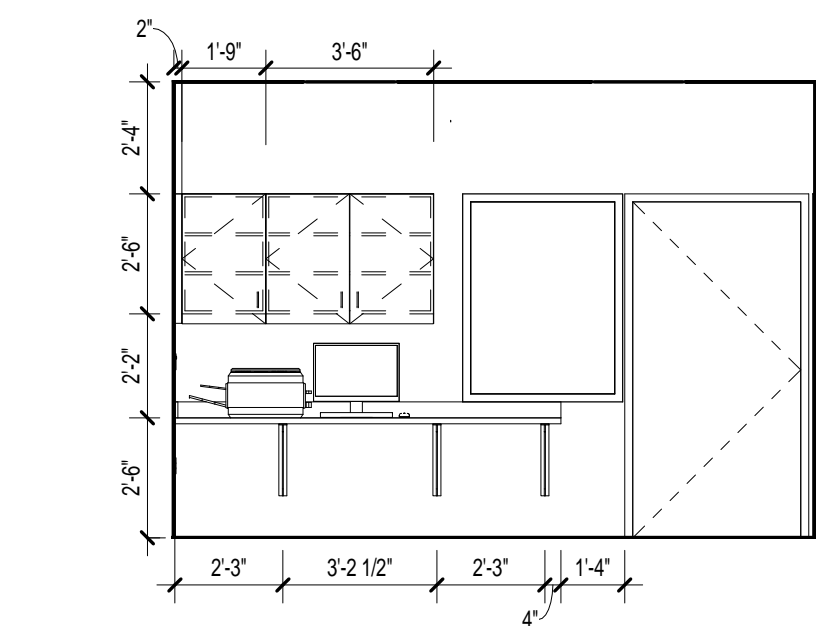
(E6) MEN'S SHOWER / LOCKER 1-605  
1/4" = 1'-0"



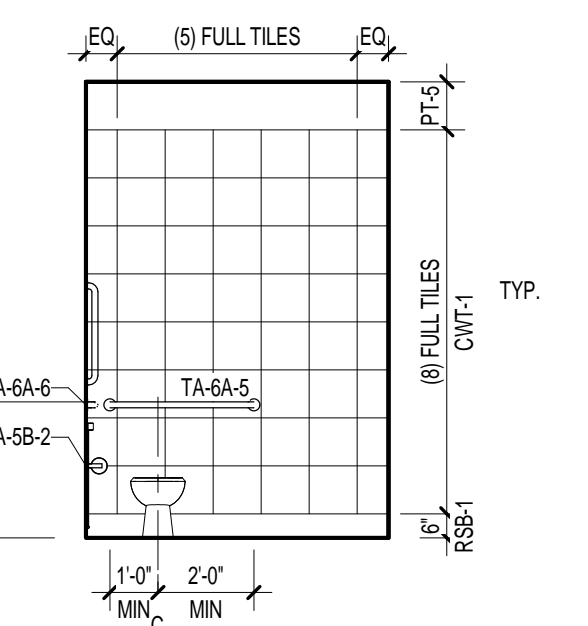
(E7) MEN'S SHOWER / LOCKER 1-605  
1/4" = 1'-0"



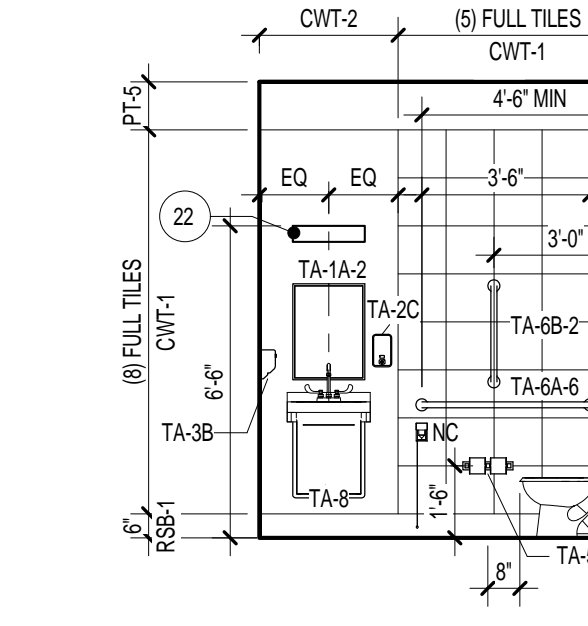
(F1) OFFICE 1-604  
1/4" = 1'-0"



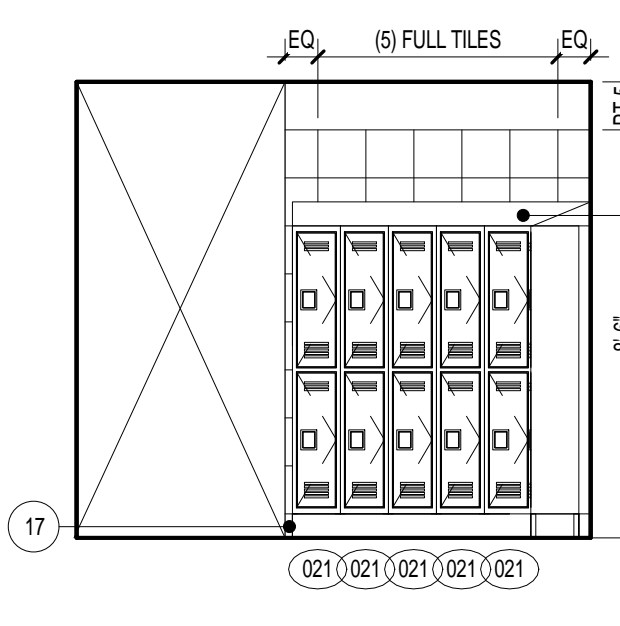
(F2) WOMEN'S TOILET ROOM  
1/4" = 1'-0"



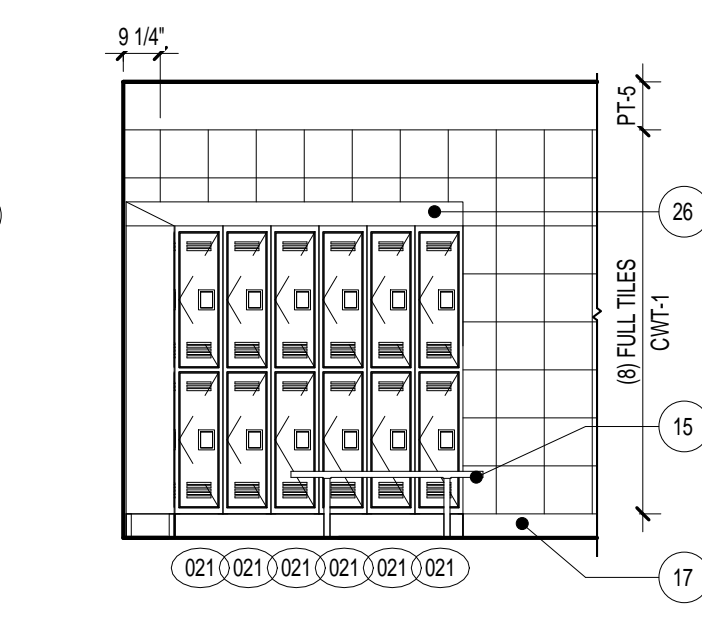
(F3) WOMEN'S TOILET ROOM  
1/4" = 1'-0"



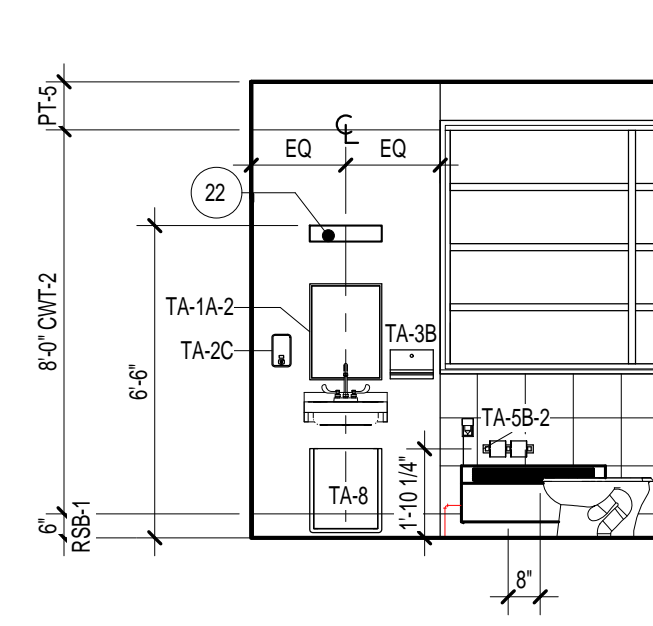
(F4) WOMEN'S SHOWER / LOCKER 1-601  
1/4" = 1'-0"



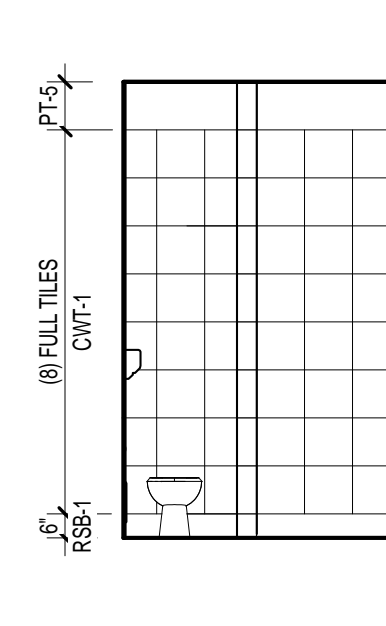
(F5) WOMEN'S SHOWER / LOCKER 1-601  
1/4" = 1'-0"



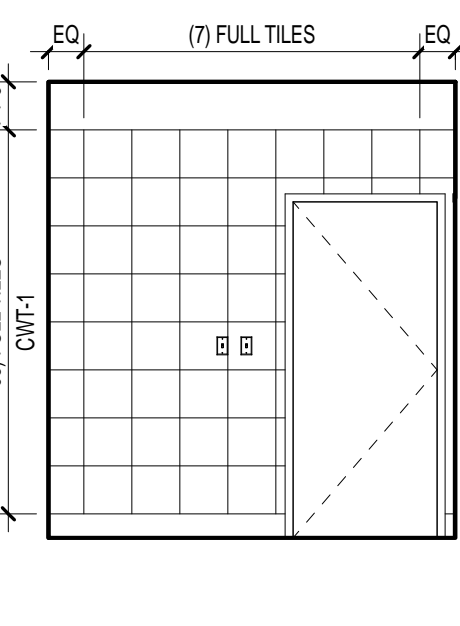
(F6) TOILET  
1/4" = 1'-0"



(F7) TOILET  
1/4" = 1'-0"



(F8) TOILET  
1/4" = 1'-0"



#### INTERIOR ELEVATION KEYNOTES

- 1 PLASTIC LAMINATE FILLER PANEL.
- 2 FINISH EXPOSED SIDE OF BASE / WALL CABINET WITH PLASTIC LAMINATE (TYP)
- 3 PLASTIC LAMINATE END PANEL.
- 4 1" PLASTIC LAMINATE SUPPORT LEG.
- 5 PLASTIC LAMINATE FASCIA PANEL ABOVE WALL CABINET, TYPICAL.
- 6 PLASTIC WALL PROTECTION.
- 7 CORNER GUARD.
- 8 HANDRAIL, MOUNT TOP AT 3'-0" A.F.F.
- 9 CRASH RAIL, MOUNT TOP AT 3'-0" A.F.F.
- 10 SOLID SURFACE COUNTERTOP.
- 11 SOLID SURFACE TRANSACTION SHELF.
- 12 FABRIC WRAP TACK BOARD.
- 13 WINDOW SILL TO BE CLEANED AND RETURNED TO ORIGINAL FINISH
- 14 4" HIGH SOLID SURFACE BACK AND SIDE SPLASHES.
- 15 LOCKER ROOM BENCH, TO BE RELOCATED FROM BUILDING 58.
- 16 SCHEDULED BASE AT RECESSED TOE KICK.
- 17 SCHEDULED BASE.
- 18 CONTINUOUS WIRE MOLD. REFER TO ELECTRICAL DRAWINGS.
- 19 CONTINUOUS 1" HANGER.
- 20 SEGMENTED REMOVABLE ACCESS PANEL.
- 21 TASK LIGHTING
- 22 WALL SCONCE
- 23 GYPSUM WALLBOARD SOFFIT. COORDINATE HEIGHT WITH SOUND BOOTH SELECTED BY VA.
- 24 STORAGE CABINET, NOT IN CONTRACT.
- 25 BOOKCASE, NOT IN CONTRACT.
- 26 METAL LOCKERS WITH SLOPED TOP. SEE SPECIFICATIONS.
- 27 GYPSUM WALLBOARD SOFFIT
- 28 MILLWORK TO BE LOCKABLE
- 29 LAMINATE AND TEMPERED GLASS
- 30 CURTLE CURTAIN AND TRACK
- 31 METAL SUPPORT BRACKET
- 32 FURNITURE, N.I.C.
- 33 BRICK INFILL TO MATCH EXISTING CONSTRUCTION.
- 34 EXISTING ELECTRICAL PANEL TO REMAIN.
- 35 ROBE HOOK RACK WITH 8 HOOKS

NOTE: SEE SHEET AE-002 FOR ALTERNATES

ISSUED FOR BID

#### CONSULTANTS:

**Project Manager**  
BRAY MOONEY CONSULTING

**Architect**  
ARRAY HEALTHCARE FACILITIES SOLUTIONS

**Structural Engineer**  
WZG, STRUCTURAL CONSULTING ENGINEERS

**MEP/FP Engineer**  
APOGEE CONSULTING GROUP

**Civil Engineer**  
GUIDON DESIGN

**Fire Protection Consultant**  
HARRINGTON GROUP

**Cost Estimator**  
BRAY MOONEY CONSULTING

**Aquatic Consultant**  
ATLANTIC AQUATIC ENGINEERING

**Associate Architects**  
W. COOK ARCHITECTS

410 E. 21 STREET  
CHESTER, PA 19013  
Tel: (610) 872-3716

2520 RENAISSANCE BLVD.,  
SUITE 110  
KING OF PRUSSIA, PA 19406  
Tel: (610) 270-0599

P.O. BOX 24  
40 LITTLE ROAD  
ZIEGLERVILLE, PA 19482  
Tel: (610) 287-5194

7330 CHAPEL HILL ROAD,  
SUITE 202  
RALEIGH, NC 27606  
Tel: (919) 659-7420

2453 N DELAWARE STREET  
INDIANAPOLIS, IN 46205  
Tel: (317) 600-6388

7508 E INDEPENDENCE  
BLVD., SUITE 116  
CHARLOTTE, NC 28277  
Tel: (704) 531-6077

410 E. 21 STREET  
CHESTER, PA 19013  
Tel: (610) 872-3716

1823 DEEP RUN ROAD  
PIPERSVILLE, PA 18447  
Tel: (215) 788-0409

1251 ROMANVILLE ROAD  
COATESVILLE, PA 19320  
Tel: (610) 383-4460

#### PROJECT MANAGER:

**Bray Mooney Consulting**

Project Number  
3627

Scale  
As indicated

Drawing Title  
FIRST FLOOR ENLARGED PLAN - THERAPY POOL

Approved: Project Director

Project Title  
RENOVATE BUILDING 69

Location  
1400 Black Horse Hill, Coatesville, PA

Date  
1/22/2014

Checked  
TN

Drawn  
BG

VA Project Number  
542-CSI-203

Building Number  
69

Drawing Number  
AE406

Dwg. 29 of 86

Office of  
Facilities  
Management

