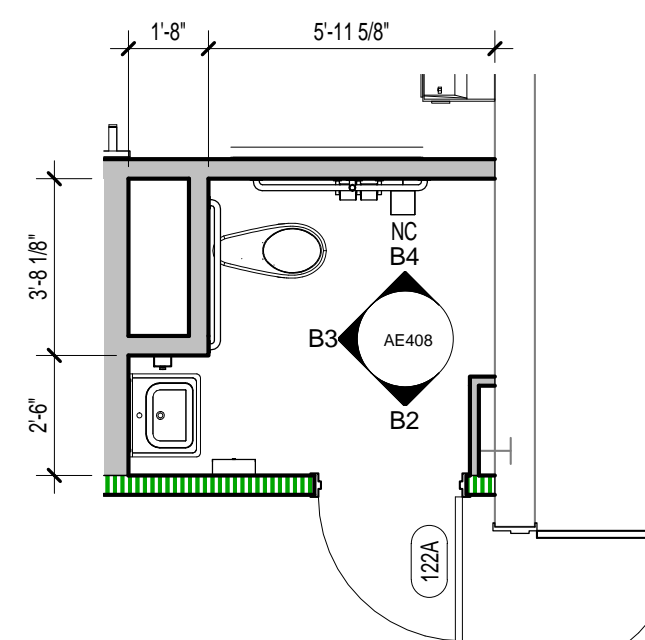
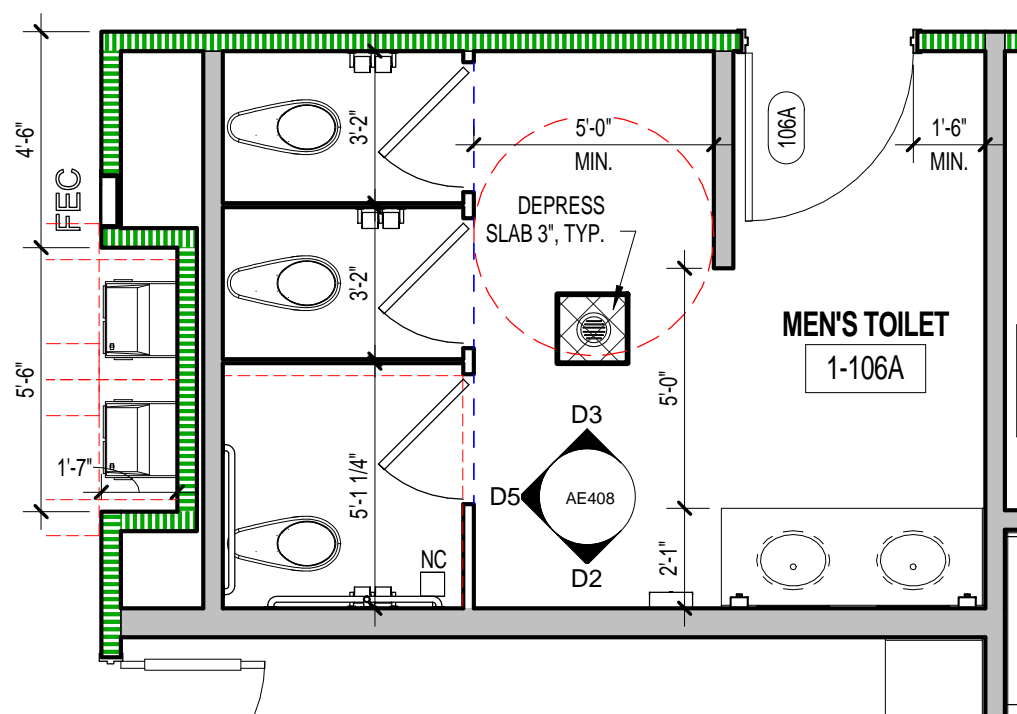


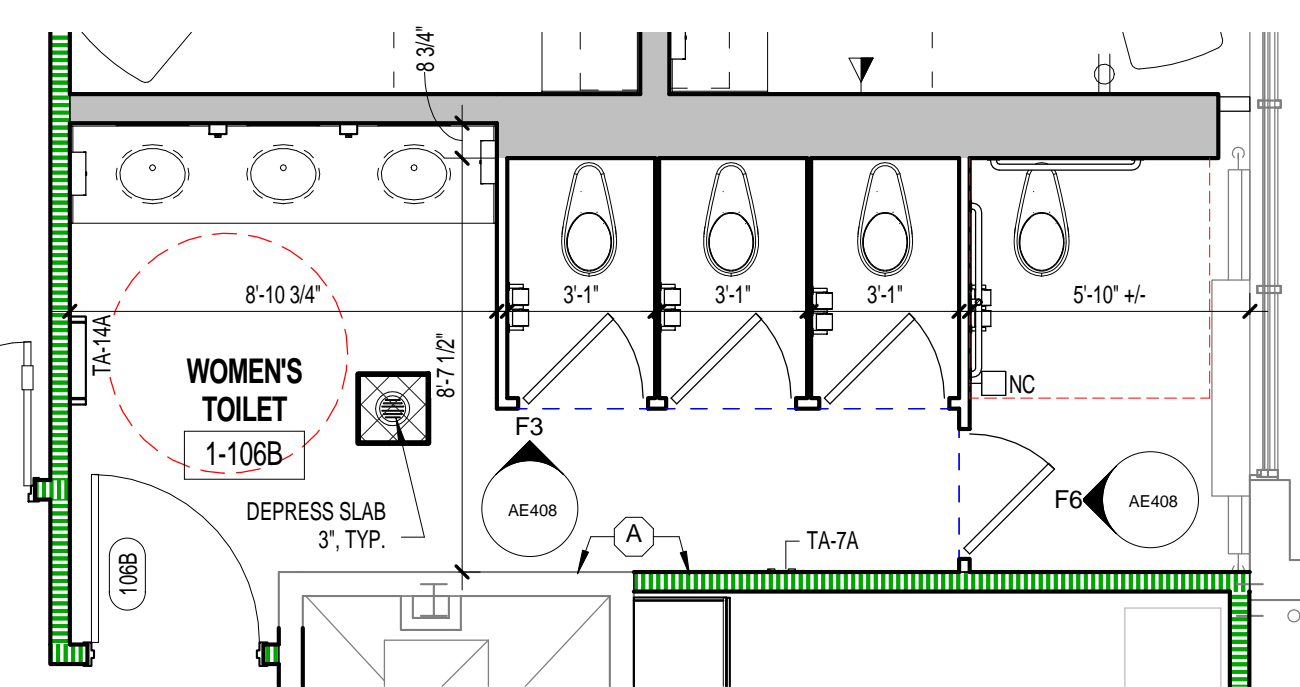
A1 PATIENT TOILET ROOMS
1/4" = 1'-0"



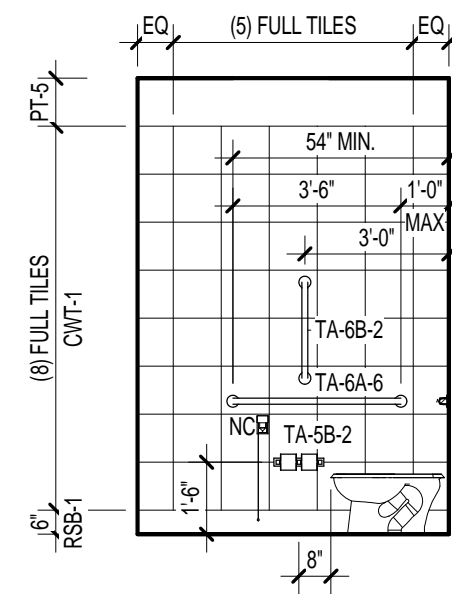
B1 STAFF BREAK TOILET
1/4" = 1'-0"



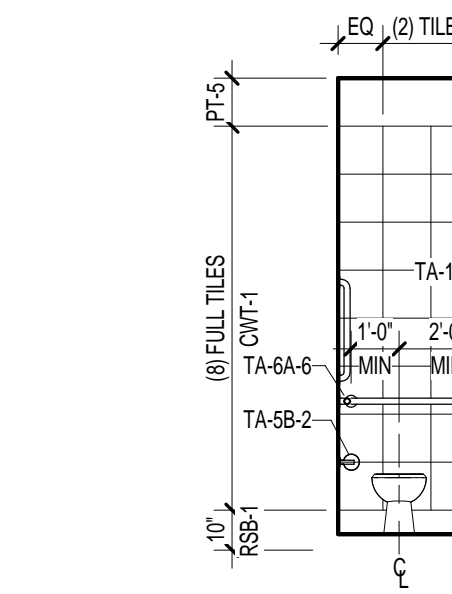
D1 ENLARGED PLAN - MENS TOILET
1/4" = 1'-0"



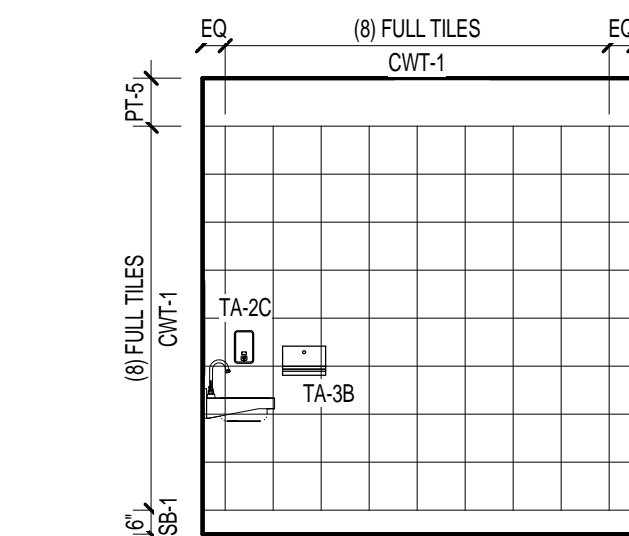
F1 ENLARGED PLAN - WOMENS TOILET
1/4" = 1'-0"



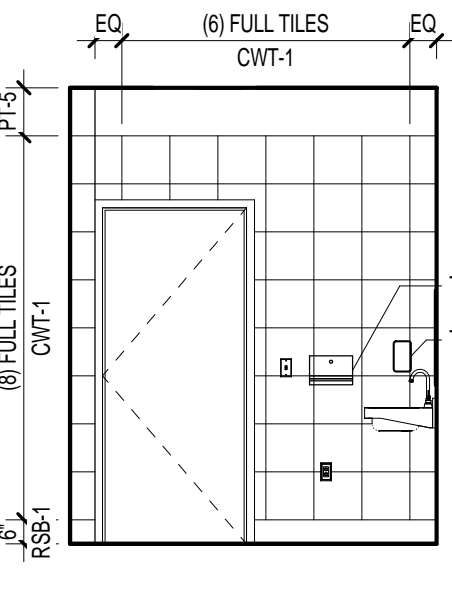
A2 PATIENT TOILET, TYP.
1/4" = 1'-0"



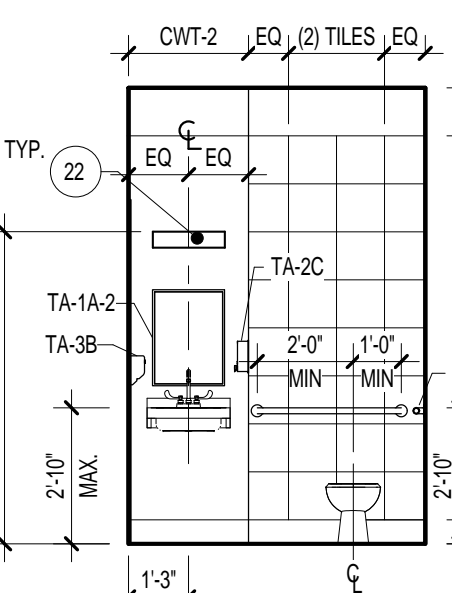
A3 PATIENT TOILET, TYP.
1/4" = 1'-0"



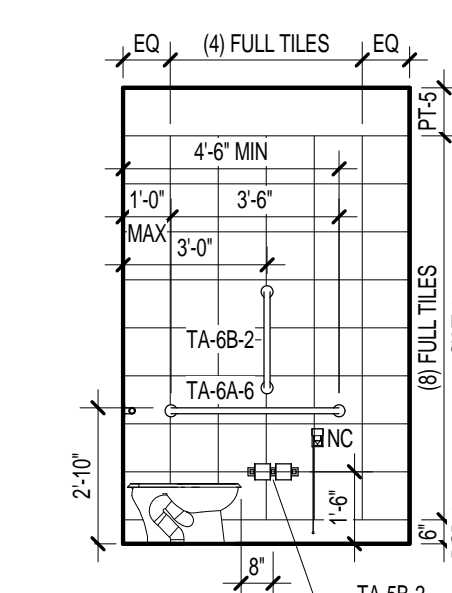
A4 PATIENT TOILET, TYP.
1/4" = 1'-0"



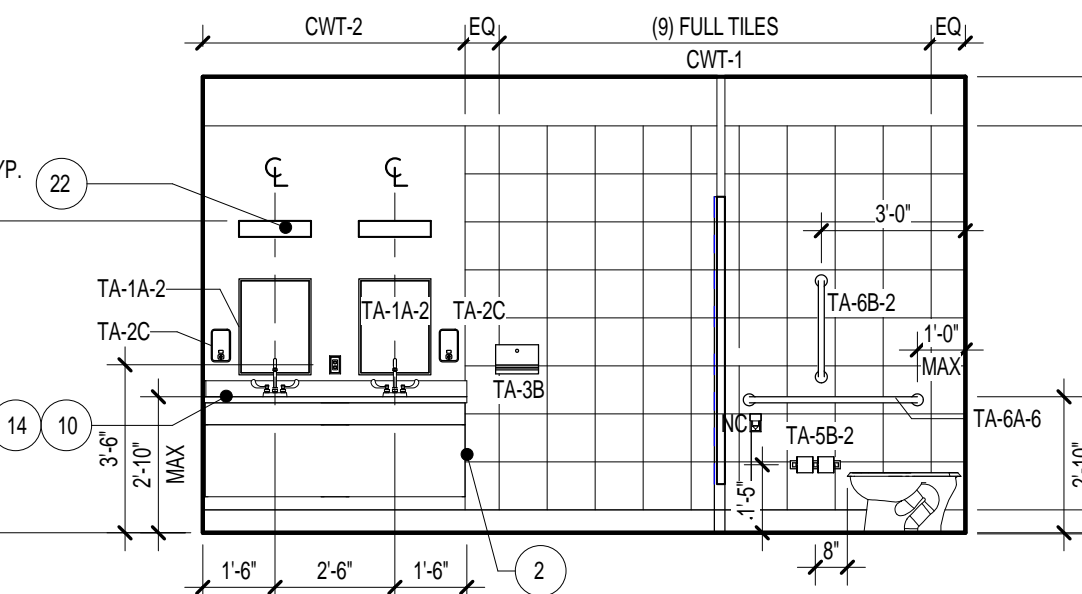
B2 STAFF BREAK TOILET
1/4" = 1'-0"



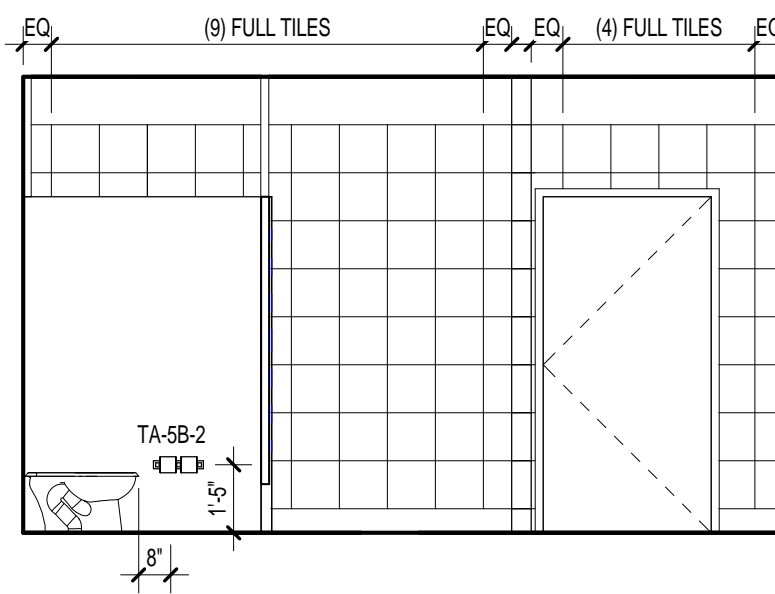
B3 STAFF BREAK TOILET
1/4" = 1'-0"



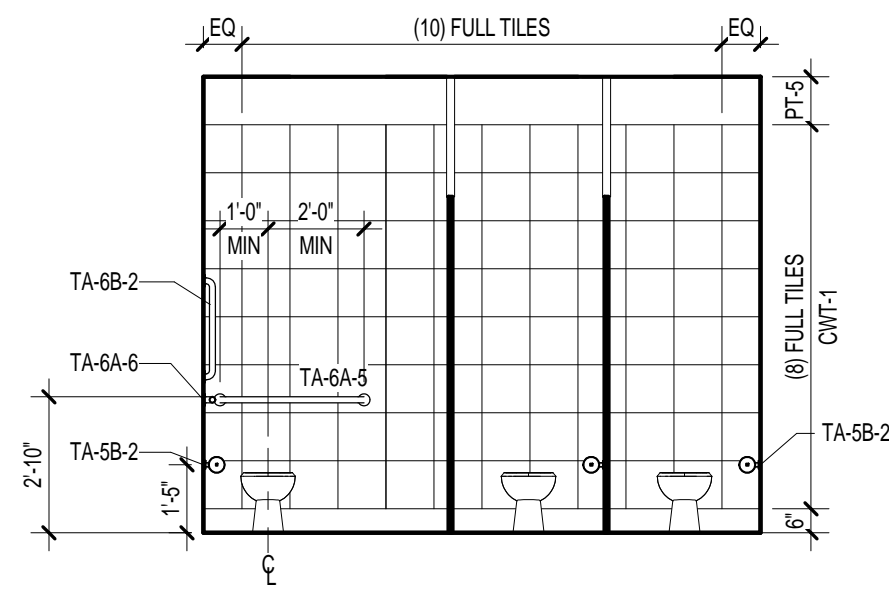
B4 STAFF BREAK TOILET
1/4" = 1'-0"



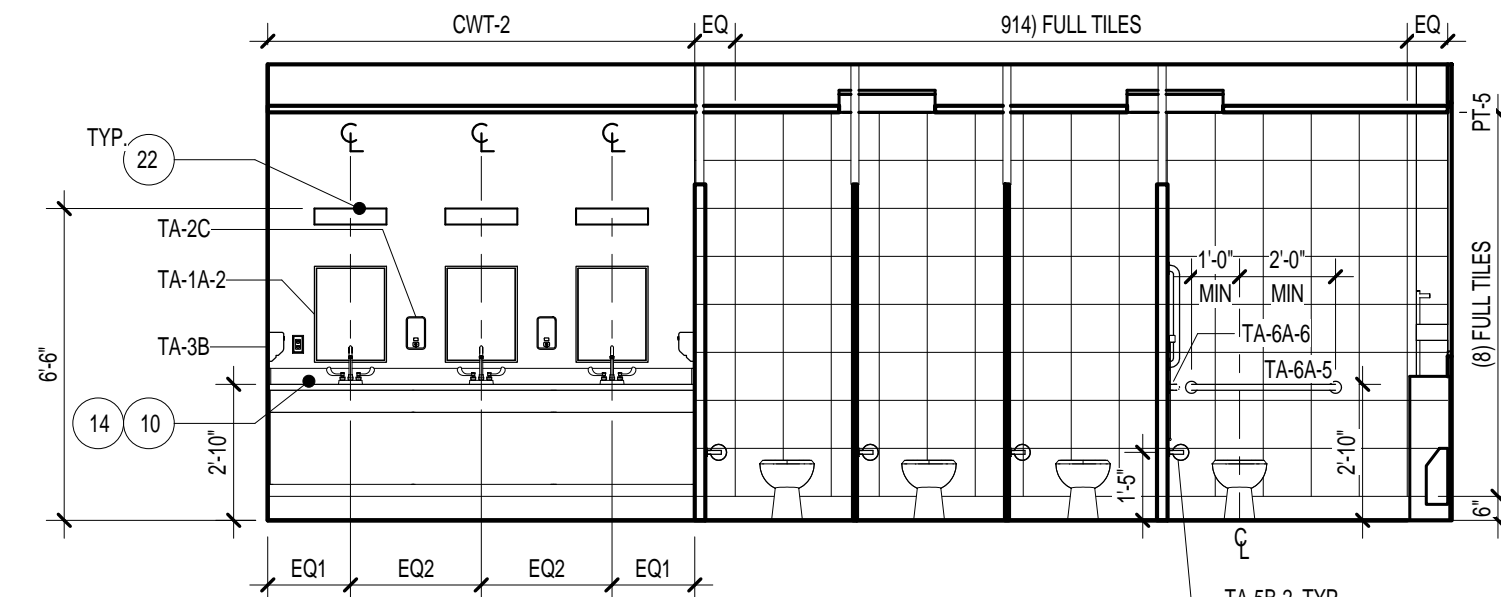
D2 MENS TOILET 1-104
1/4" = 1'-0"



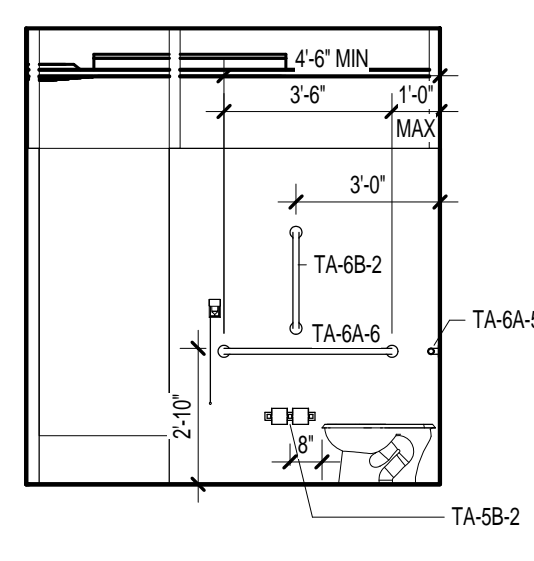
D3 MENS TOILET 1-104
1/4" = 1'-0"



D5 MENS TOILET 1-104
1/4" = 1'-0"



F3 WOMENS TOILET
1/4" = 1'-0"



F6 WOMENS TOILET
1/4" = 1'-0"

ARCHITECTURAL GENERAL NOTES

- SEE SHEET AE704 FOR EQUIPMENT SCHEDULE.
- SEE SHEET AE701 FOR DOOR SCHEDULE.
- SEE SHEET AE701 FOR WINDOW SCHEDULE.
- SEE SHEET AE702 FOR TOILET ACCESSORY SCHEDULE.
- SEE SHEET AE704 FOR FINISH SCHEDULE.

TOILET ROOM GENERAL NOTES

- ALL TOILET PARTITIONS TO BE WALL HUNG WITH CEILING MOUNTED SUPPORTS.

INTERIOR ELEVATION KEYNOTES

- PLASTIC LAMINATE FILLER PANEL.
- FINISH EXPOSED SIDE OF BASE / WALL CABINET WITH PLASTIC LAMINATE. (TYP)
- PLASTIC LAMINATE END PANEL.
- 1" PLASTIC LAMINATE SUPPORT LEG.
- PLASTIC LAMINATE FASCIA PANEL ABOVE WALL CABINET, TYPICAL.
- PLASTIC WALL PROTECTION.
- CORNER GUARD.
- HANDRAIL, MOUNT TOP AT 3'-0" A.F.F.
- CRASH RAIL, MOUNT TOP AT 3'-0" A.F.F.
- SOLID SURFACE COUNTERTOP.
- SOLID SURFACE TRANSACTION SHELF.
- FABRIC WRAP TACK BOARD.
- WINDOW SILL TO BE CLEANED AND RETURNED TO ORIGINAL FINISH.
- 4" HIGH SOLID SURFACE BACK AND SIDE SPLASHES.
- LOCKER ROOM BENCH, TO BE RELOCATED FROM BUILDING 58.
- SCHEDULED BASE AT RECESSED TOE KICK.
- SCHEDULED BASE.
- CONTINUOUS WIRE MOLD, REFER TO ELECTRICAL DRAWINGS.
- CONTINUOUS "J" HANGER.
- SEGMENTED REMOVABLE ACCESS PANEL.
- TASK LIGHTING.
- WALL SCONCE.
- GYPSUM WALLBOARD SOFFIT. COORDINATE HEIGHT WITH SOUND BOOTH SELECTED BY VA.
- STORAGE CABINET, NOT IN CONTRACT.
- BOOKCASE, NOT IN CONTRACT.
- METAL LOCKERS WITH SLOPED TOP, SEE SPECIFICATIONS.
- GYPSUM WALLBOARD SOFFIT.
- MILLWORK TO BE LOCKABLE.
- LAMINATE AND TEMPERED GLASS.
- CUBICLE CURTAIN AND TRACK.
- METAL SUPPORT BRACKET.
- FURNITURE, N.I.C.
- BRICK INFILL TO MATCH EXISTING CONSTRUCTION.
- EXISTING ELECTRICAL PANEL TO REMAIN.
- ROBE HOOK RACK WITH 8 DOUBLE HOOKS.

TOILET ACCESSORIES LEGEND

TA-1A-#	TA-1B-#	TA-1C-#	TA-1D-#	TA-1E-#
Mirror with Stainless Steel Frame	Fixed Tilt Mirror with Stainless Steel Frame	TA Mirror with Stainless Steel Frame	Frameless Stainless Steel Mirror	Mirror with Stainless Steel Frame and Shelf
TA-1A-1 16"x24"	TA-1B-1 16"x24"	TA-1C-1 16"x24"	TA-1D-1 16"x24"	TA-1E-1 16"x24"
TA-1A-2 18"x24"	TA-1B-2 18"x24"	TA-1C-2 18"x24"	TA-1D-2 18"x24"	TA-1E-2 18"x24"
TA-1A-3 18"x30"	TA-1B-3 18"x30"	TA-1C-3 18"x30"	TA-1D-3 18"x30"	TA-1E-3 18"x30"
TA-1A-4 18"x36"	TA-1B-4 24"x36"	TA-1C-4 24"x36"	TA-1D-4 24"x36"	TA-1E-4 24"x36"
TA-1A-5 24"x30"	TA-1B-5 24"x30"	TA-1C-5 24"x30"	TA-1D-5 24"x30"	TA-1E-5 24"x30"
TA-1A-6 24"x36"	TA-1B-6 24"x36"	TA-1C-6 24"x36"	TA-1D-6 24"x36"	TA-1E-6 24"x36"
TA-1A-7 24"x48"	TA-1B-7 24"x48"	TA-1C-7 24"x48"	TA-1D-7 24"x48"	TA-1E-7 24"x48"
TA-1A-8 48"x36"	TA-1B-8 48"x36"	TA-1C-8 48"x36"	TA-1D-8 48"x36"	TA-1E-8 48"x36"
TA-1A-9 36"x36"	TA-1B-9 36"x36"	TA-1C-9 36"x36"	TA-1D-9 36"x36"	TA-1E-9 36"x36"
TA-1A-10 48"x36"	TA-1B-10 48"x36"	TA-1C-10 48"x36"	TA-1D-10 48"x36"	TA-1E-10 48"x36"
TA-1A-11 60"x36"	TA-1B-11 60"x36"	TA-1C-11 60"x36"	TA-1D-11 60"x36"	TA-1E-11 60"x36"

TA-2A	TA-2B	TA-2C	TA-2D	TA-2E	TA-3A	TA-3B	TA-3C	TA-3D	TA-3E	TA-3F	TA-4A	TA-4B
Soap Dispenser Deck Type	Recessed Soap Dispenser	Surface Mounted Soap Dispenser	Surface Mounted Soap Dispenser	Surface Mounted Soap Dispenser	Surface Mounted Paper Towel Dispenser	Surface Mounted Paper Towel Dispenser	Surface Mounted Paper Towel Dispenser	Surface Mounted Paper Towel Dispenser	Surface Mounted Paper Towel Dispenser	Surface Mounted Paper Towel Dispenser	Surface Mounted Waste Receptacle	Recessed Waste Receptacle

TA-5A-1	TA-5B-1	TA-5C	TA-5D	TA-5A-#	TA-5B-#	TA-5C-#	TA-5D-#
TA-5A-1	TA-5B-1	TA-5C	TA-5D	TA-5A-#	TA-5B-#	TA-5C-#	TA-5D-#

TA-6A-1	TA-6B-1	TA-6C-1	TA-6D-1	TA-6A-#	TA-6B-#	TA-6C-#	TA-6D-#
TA-6A-1	TA-6B-1	TA-6C-1	TA-6D-1	TA-6A-#	TA-6B-#	TA-6C-#	TA-6D-#

TA-7A-1	TA-7B-1	TA-7C-1	TA-7D-1	TA-7A-#	TA-7B-#	TA-7C-#	TA-7D-#
TA-7A-1	TA-7B-1	TA-7C-1	TA-7D-1	TA-7A-#	TA-7B-#	TA-7C-#	TA-7D-#

TA-8A-1	TA-8B-1	TA-8C-1	TA-8D-1	TA-8A-#	TA-8B-#	TA-8C-#	TA-8D-#
TA-8A-1	TA-8B-1	TA-8C-1	TA-8D-1	TA-8A-#	TA-8B-#	TA-8C-#	TA-8D-#

TA-9A-1	TA-9B-1	TA-9C-1	TA-9D-1	TA-9A-#	TA-9B-#	TA-9C-#	TA-9D-#
TA-9A-1	TA-9B-1	TA-9C-1	TA-9D-1	TA-9A-#	TA-9B-#	TA-9C-#	TA-9D-#

TA-10A-1	TA-10B-1	TA-10C-1	TA-10D-1	TA-10A-#	TA-10B-#	TA-10C-#	TA-10D-#
TA-10A-1	TA-10B-1	TA-10C-1	TA-10D-1	TA-10A-#	TA-10B-#	TA-10C-#	TA-10D-#

TA-11A-1	TA-11B-1	TA-11C-1	TA-11D-1	TA-11A-#	TA-11B-#	TA-11C-#	TA-11D-#
TA-11A-1	TA-11B-1	TA-11C-1	TA-11D-1	TA-11A-#	TA-11B-#	TA-11C-#	TA-11D-#

- NOTES:
- ADA REQUIRES THAT MOUNTING HEIGHTS FOR BARRIER FREE DESIGN BE SO LOCATED THAT THE OPERATIVE PORTION (I.E. PUSH KNOB, TOWELS SLOTT) BE NO HIGHER THAN 40" FROM FINISHED FLOOR, GRAB BARS BE BETWEEN 33" AND 36" AND CON. SLOTS BE NO HIGHER THAN 40" FROM FINISHED FLOOR.
 - TOILET ACCESSORIES DESIGN VARIES BY MANUFACTURER. SEE MANUFACTURER MOUNTING HEIGHT REQUIREMENTS FOR ROUGH-INS DIMENSIONS AND LOCATION.

CONSULTANTS:

Project Manager
BRAY MOONEY CONSULTING

410 E. 21 STREET
CHESTER, PA 19013
Tel: (610) 872-3716

Architect
ARRAY HEALTHCARE FACILITIES SOLUTIONS

2520 RENAISSANCE BLVD.,
SUITE 110
KING OF PRUSSIA, PA 19406
Tel: (610) 270-0599

Structural Engineer
WZG, STRUCTURAL ENGINEERS

P.O. BOX 24
40 LITTLE ROAD
ZIEGLERVILLE, PA 19482
Tel: (610) 287-5194

MEP/FP Engineer
APOGEE CONSULTING GROUP

7330 CHAPEL HILL ROAD,
SUITE 202
RALEIGH, NC 27606
Tel: (919) 859-7420

Civil Engineer
GUIDON DESIGN

2453 N DELAWARE STREET
INDIANAPOLIS, IN 46205
Tel: (317) 600-6388

Fire Protection Consultant
HARRINGTON GROUP

7508 E. INDEPENDENCE
BLVD., SUITE 116
CHARLOTTE, NC 28277
Tel: (704) 531-0077

Cost Estimator
BRAY MOONEY CONSULTING

410 E. 21 STREET
CHESTER, PA 19013
Tel: (610) 872-3716

Aquatic Consultant
ATLANTIC AQUATIC ENGINEERING

1823 DEEP RUN ROAD
PIPERSVILLE, PA 18947
Tel: (215) 788-0409

Associate Architects
W. COOK ARCHITECTS

1251 ROMANSVILLE ROAD
COATESVILLE, PA 19320
Tel: (610) 383-4460

PROJECT MANAGER:

Bray Mooney Consulting

Project Number
3627

Scale
As indicated

Drawing Title
FIRST FLOOR ENLARGED PLAN - TOILET ROOMS

Approved: Project Director

NOTE: SEE SHEET AE-002 FOR ALTERNATES

FULLY SPRINKLERED
ISSUED FOR BID

Project Title
RENOVATE BUILDING 69

Location
1400 Black Horse Hill, Coatesville, PA

Date
1/22/2014

Checked
TN

Drawn
BG

VA Project Number
542-CSI-203

Building Number
69

Drawing Number
AE408

Dwg. 30 of 86

Office of
Facilities
Management

Department of
Veterans Affairs