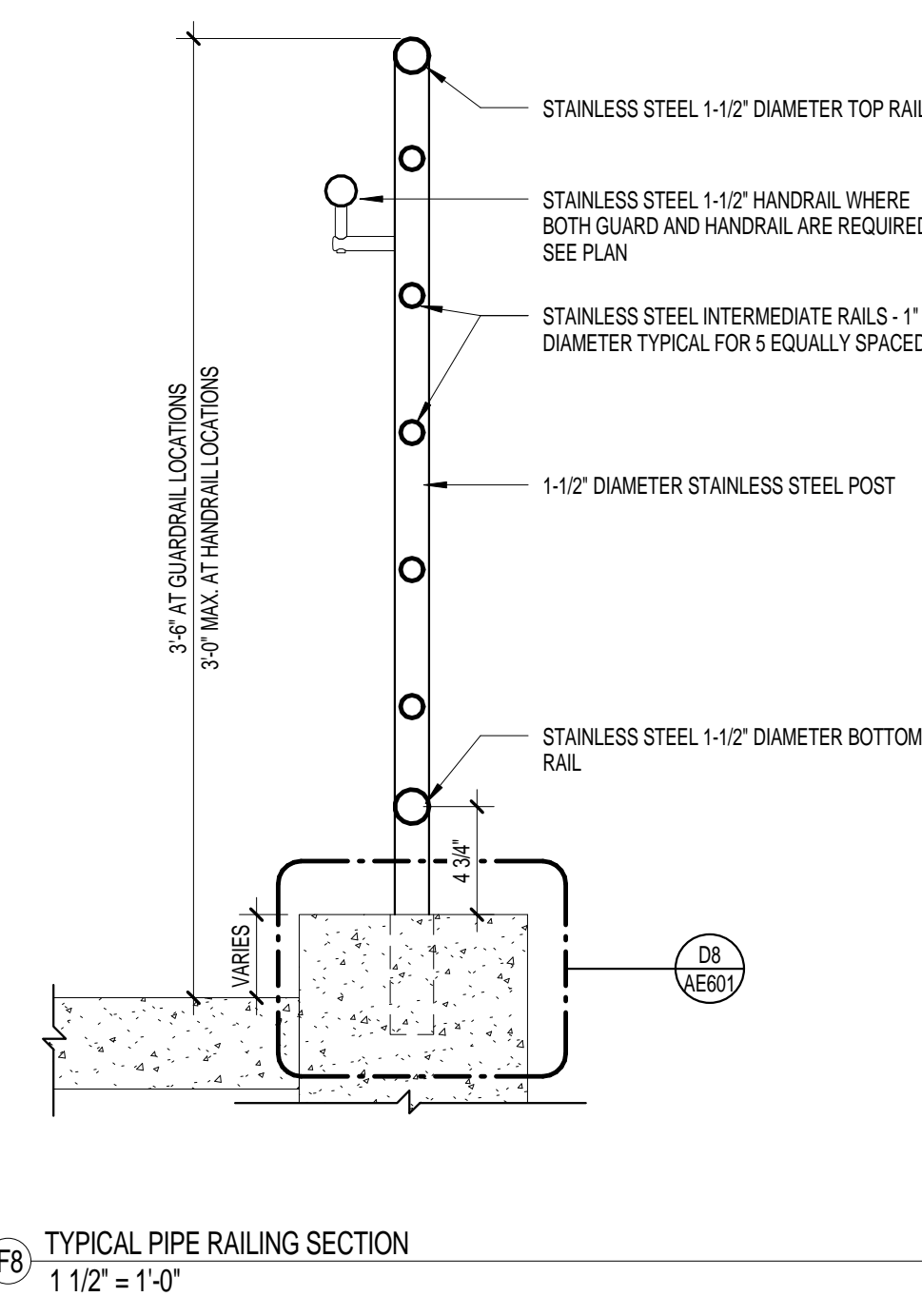
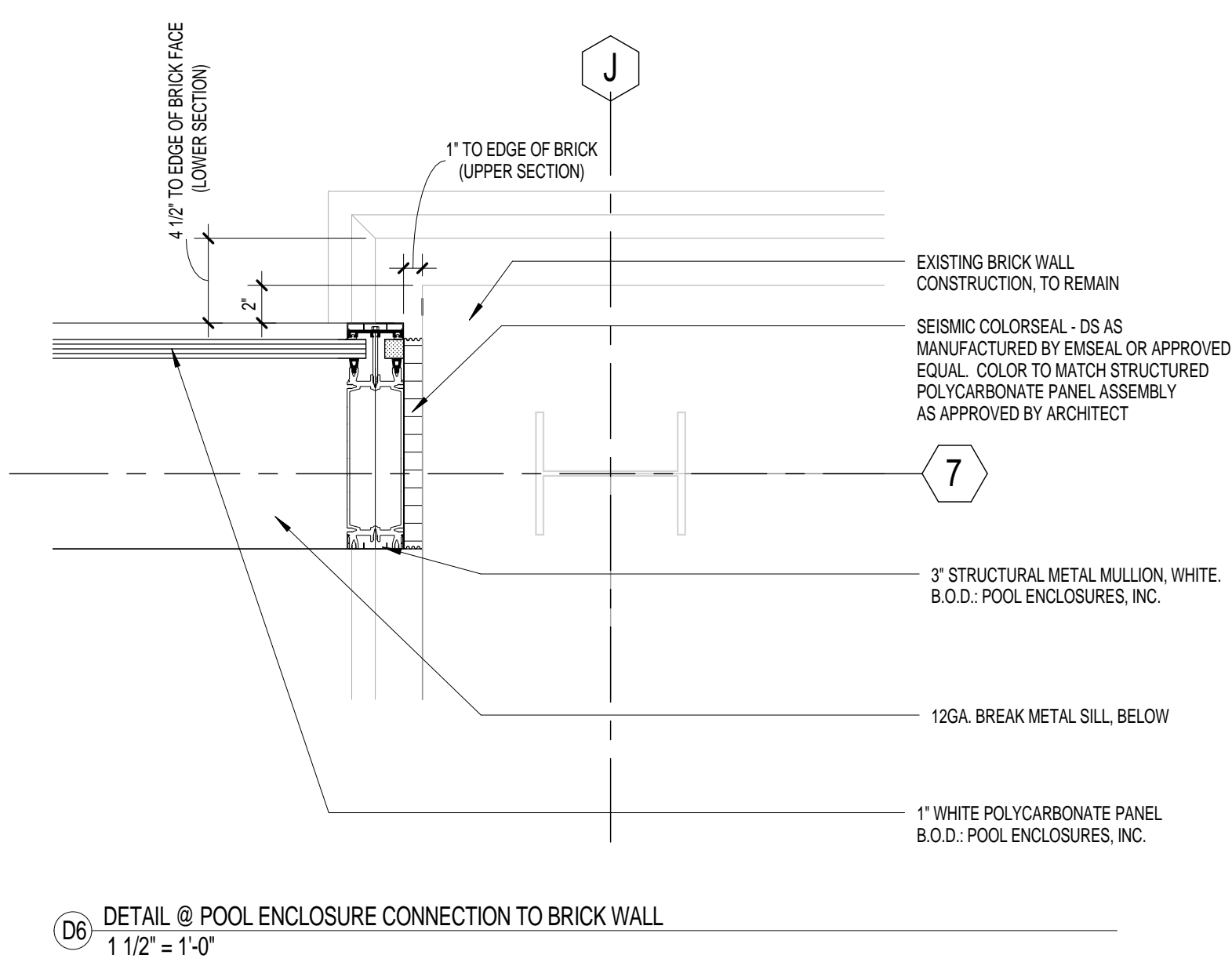
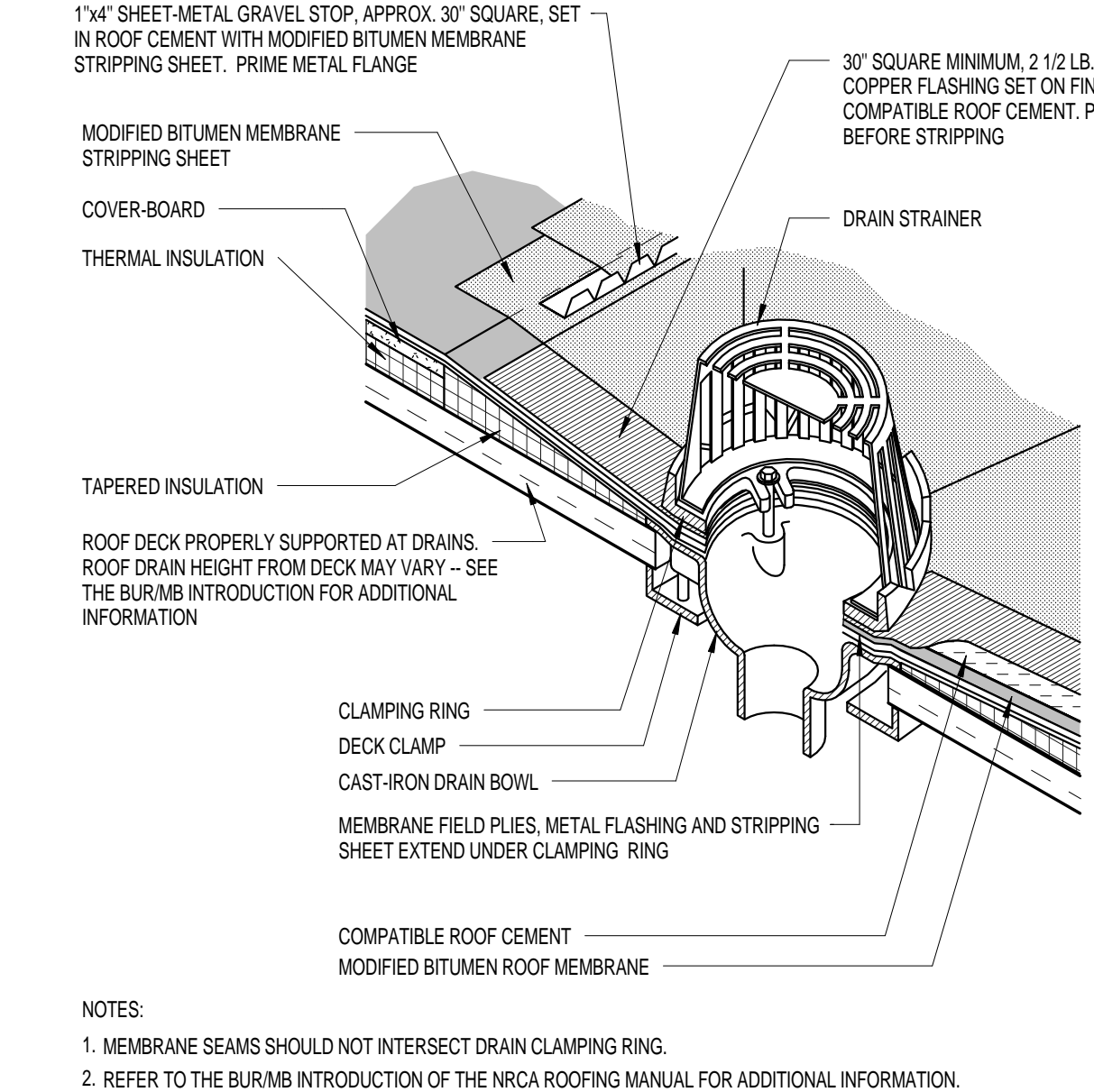
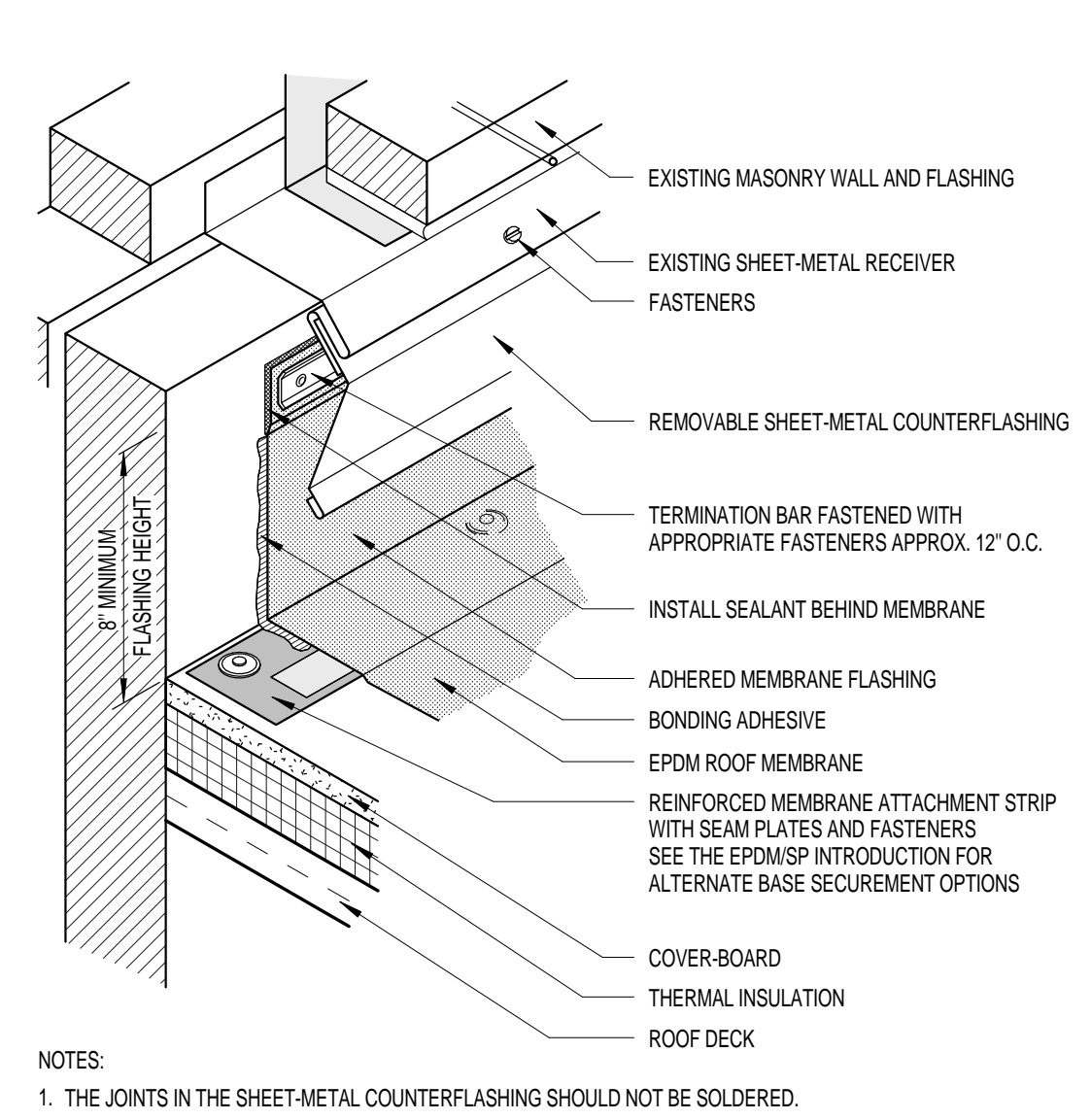
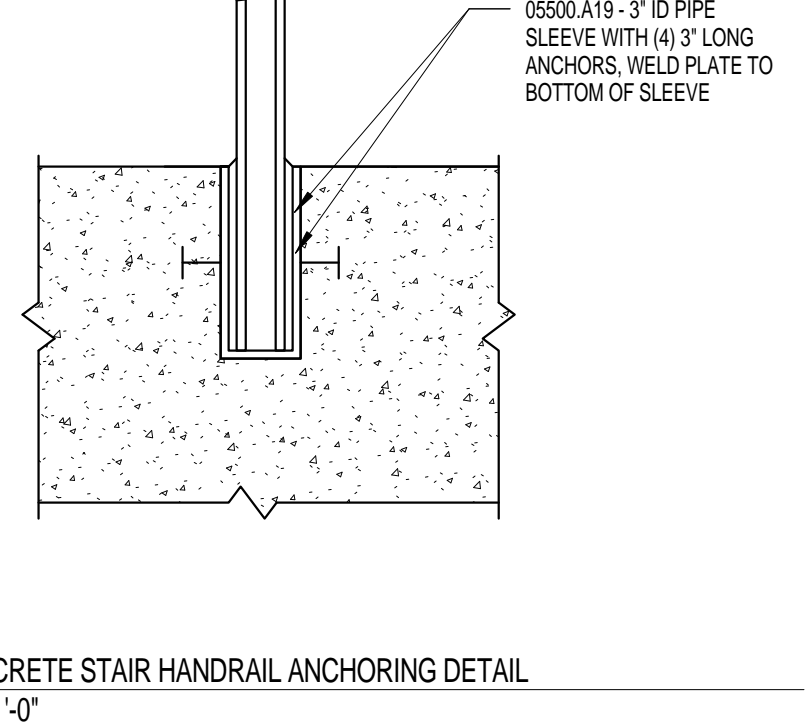
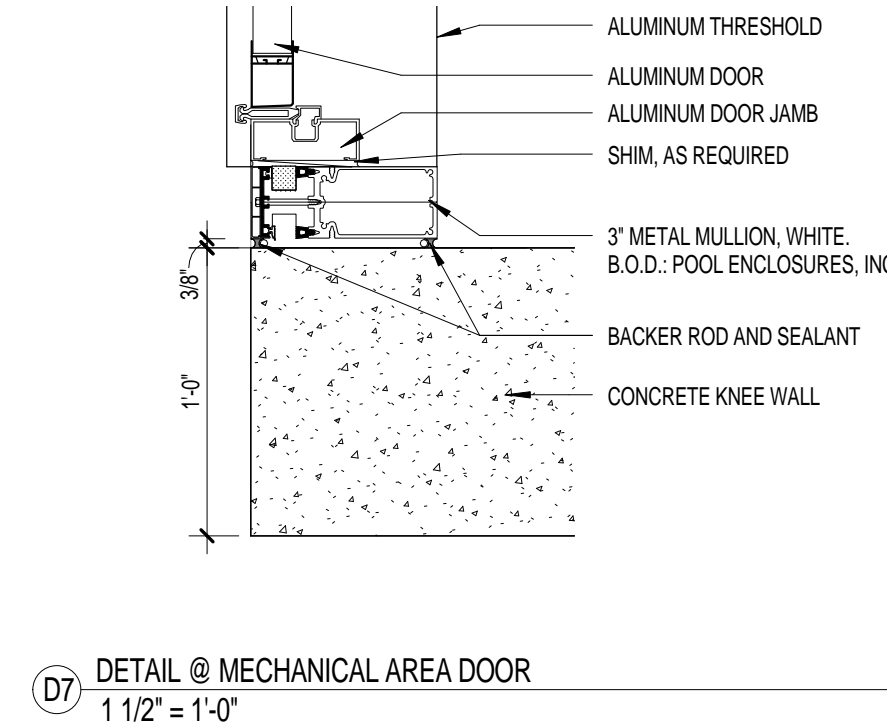
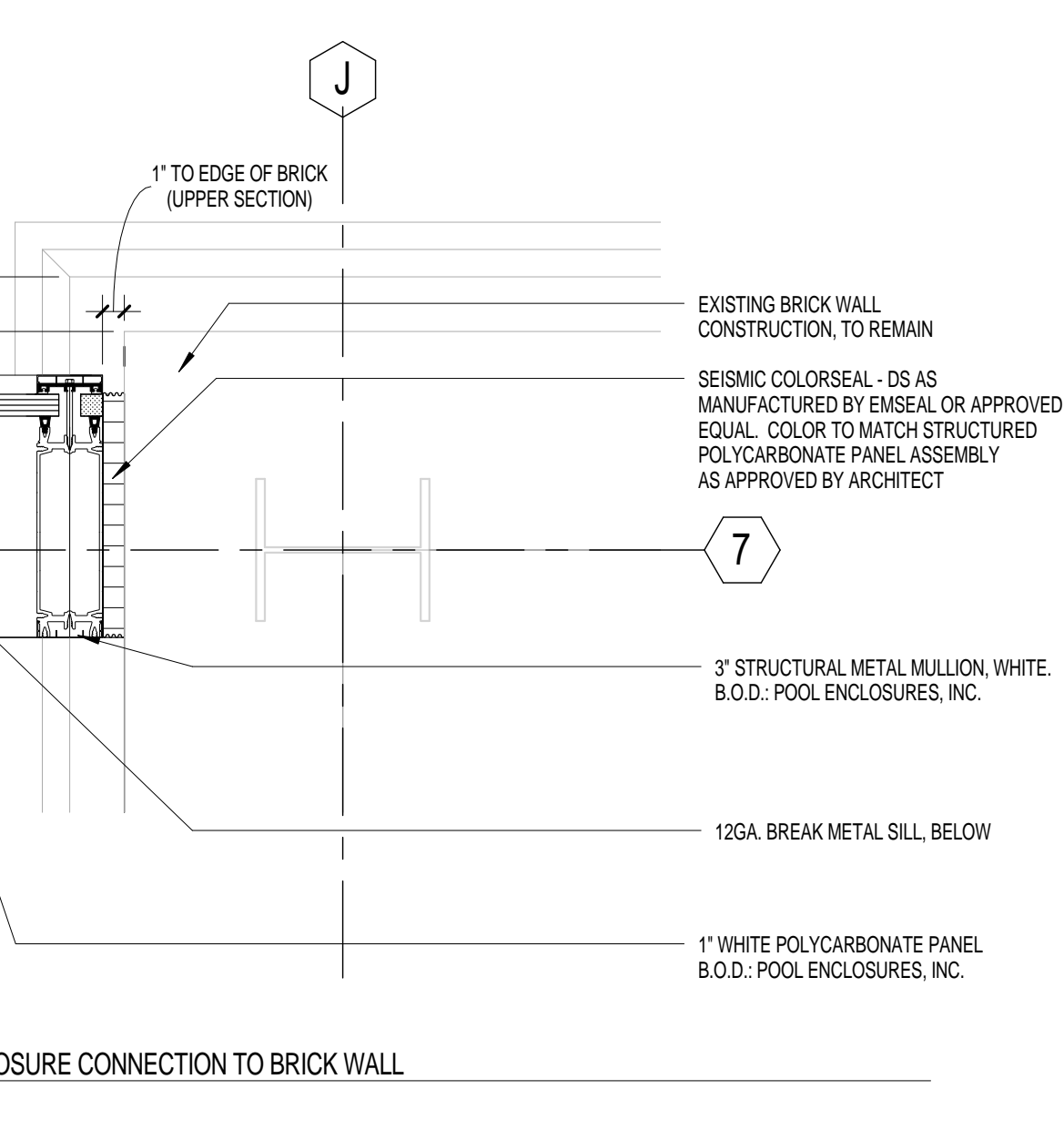
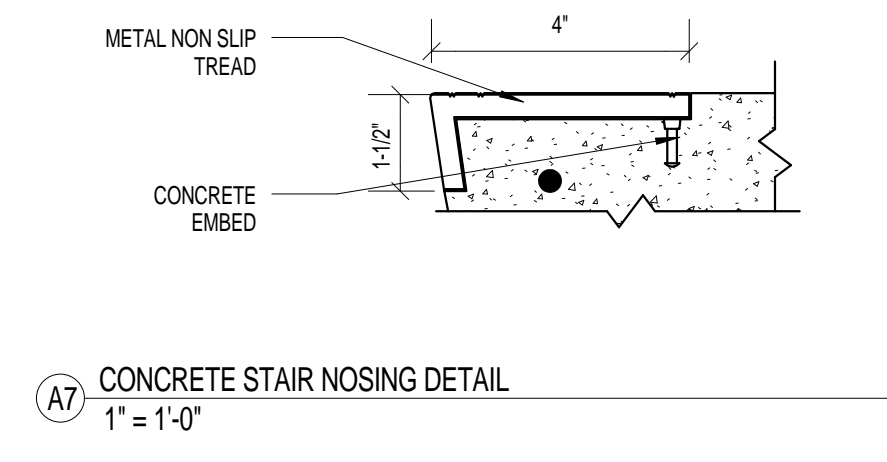
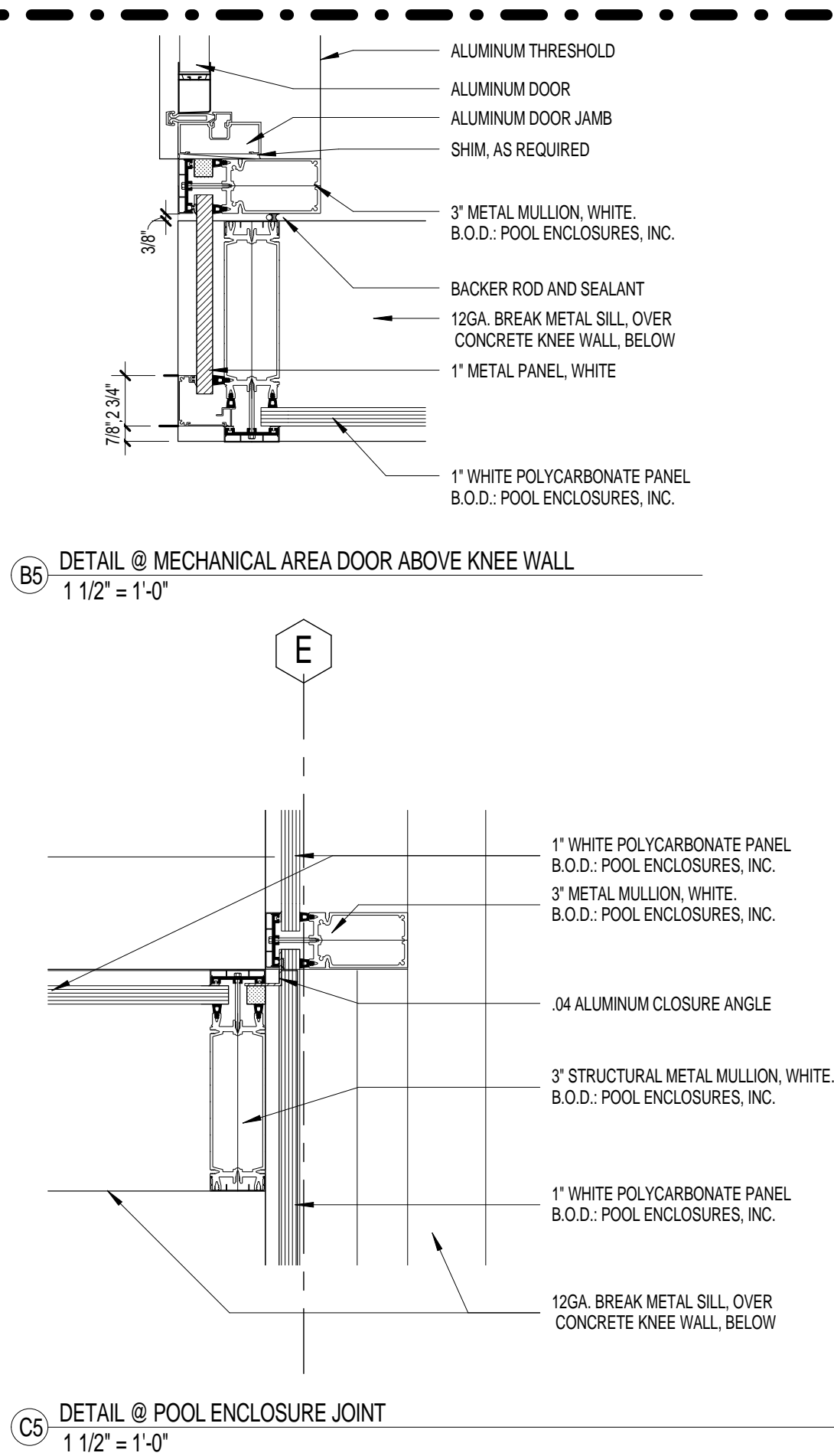
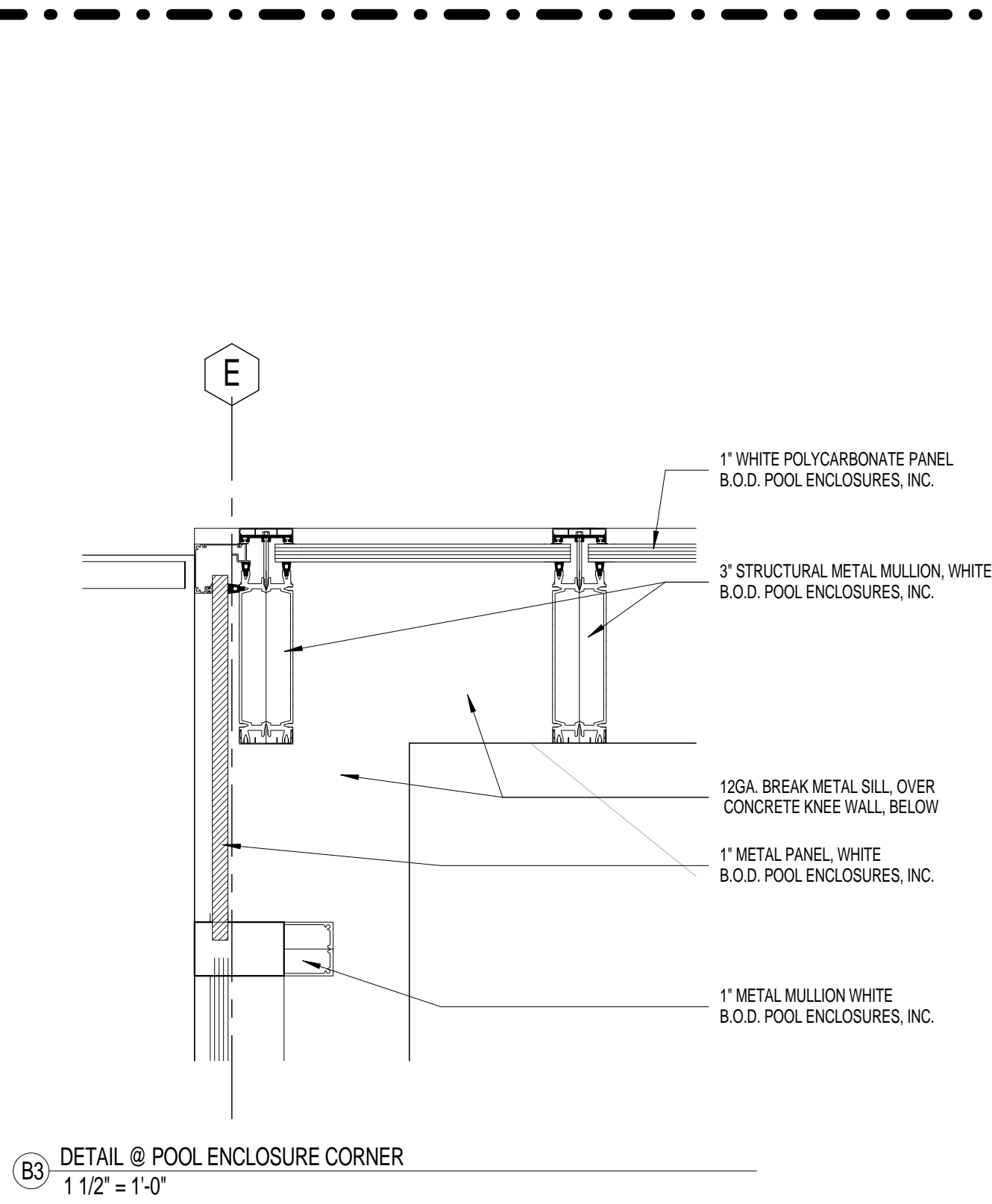
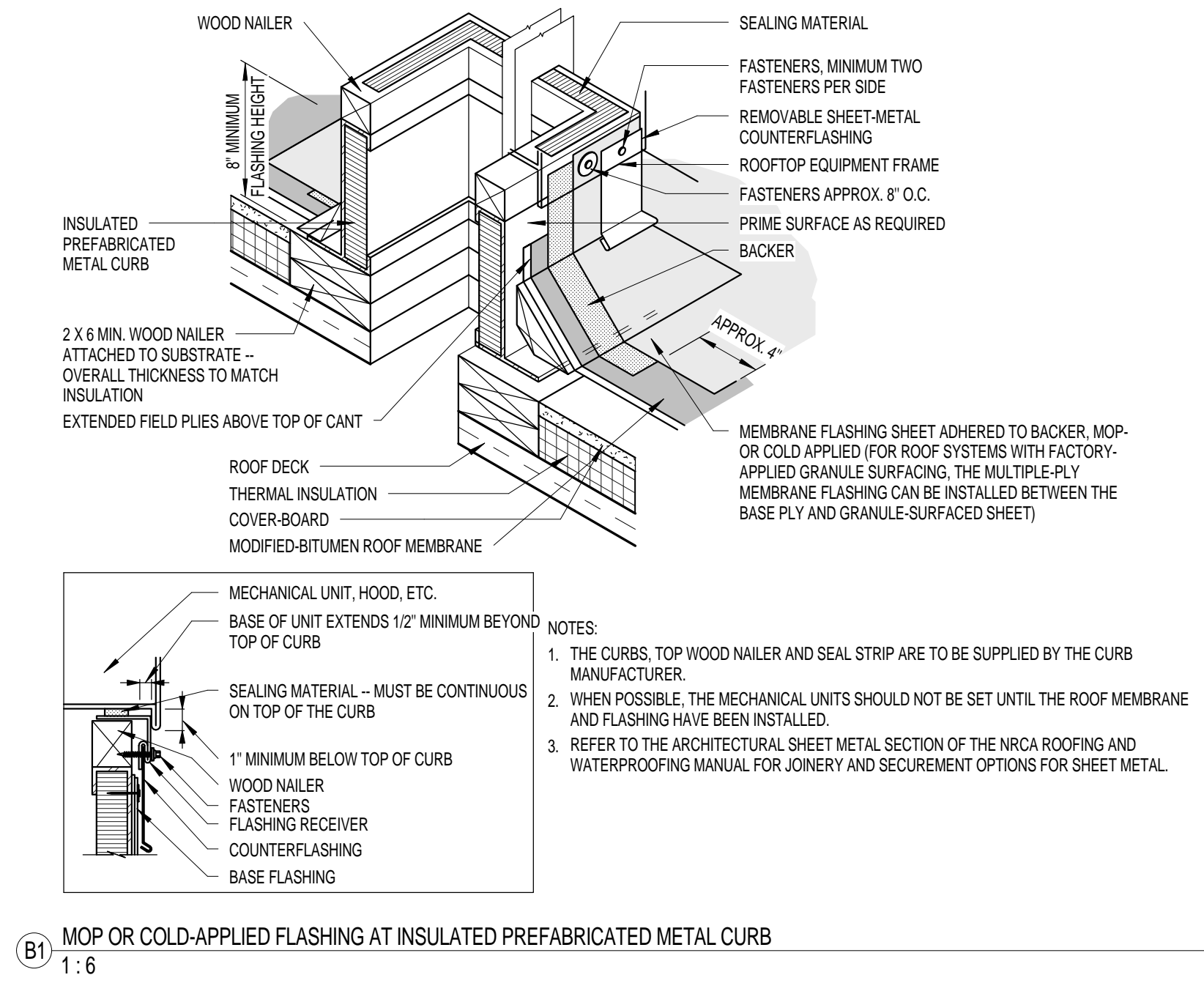


three inches = one foot
one and one half inches = one foot
one inch = one foot
three quarters inch = one foot
one half inch = one foot
three eighths inch = one foot
one quarter inch = one foot
one eighth inch = one foot



NOTE: SEE SHEET AE-002 FOR ALTERNATES
FULLY SPRINKLERED
ISSUED FOR BID

		CONSULTANTS:								PROJECT MANAGER:		Project Number 3627	Scale As indicated	Drawing Title EXTERIOR AND ROOF DETAILS		Project Title RENOVATE BUILDING 69		VA Project Number 542-CSI-203		Office of Facilities Management							
Project Manager BRAY MOONEY CONSULTING		Architect ARRAY HEALTHCARE FACILITIES SOLUTIONS		Structural Engineer WZG, STRUCTURAL CONSULTING ENGINEERS		MEP/FP Engineer APOGEE CONSULTING GROUP		Civil Engineer GUIDON DESIGN		Fire Protection Consultant HARRINGTON GROUP		Cost Estimator BRAY MOONEY CONSULTING		Aquatic Consultant ATLANTIC AQUATIC ENGINEERING		Associate Architects W. COOK ARCHITECTS		Building Number 69									
410 E. 21 STREET CHESTER, PA 19013 Tel: (610) 872-3716		2520 RENAISSANCE BLVD., SUITE 110 KING OF PRUSSIA, PA 19406 Tel: (610) 270-0599		P.O. BOX 24 40 LITTLE ROAD ZIEGLERVILLE, PA 19482 Tel: (610) 287-5194		7330 CHAPEL HILL ROAD, SUITE 202 RALEIGH, NC 27606 Tel: (919) 859-7420		2453 N DELAWARE STREET INDIANAPOLIS, IN 46205 Tel: (317) 800-6388		7508 E. INDEPENDENCE BLVD., SUITE 116 CHARLOTTE, NC 28277 Tel: (704) 531-0077		410 E. 21 STREET CHESTER, PA 19013 Tel: (610) 872-3716		1823 DEEP RUN ROAD PIPERSVILLE, PA 18947 Tel: (215) 786-0409		1251 ROMANSVILLE ROAD COATESVILLE, PA 19320 Tel: (610) 383-4460		Drawing Number AE601									
Revisions		Date												Approved: Project Director		Location 1400 Black Horse Hill, Coatesville, PA		Date 1/22/2014		Checked TN		Drawn BG		Dwg. 31 of 86		 Department of Veterans Affairs	