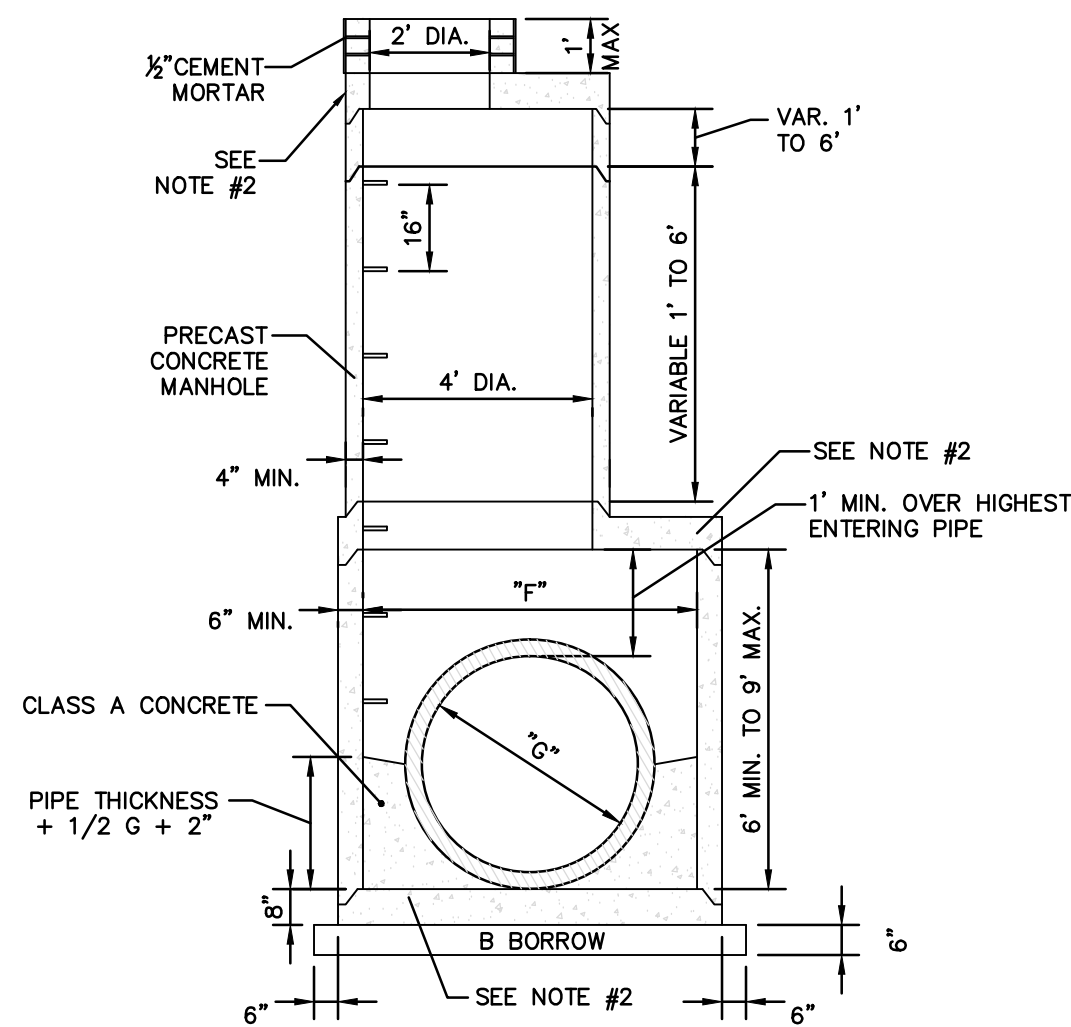
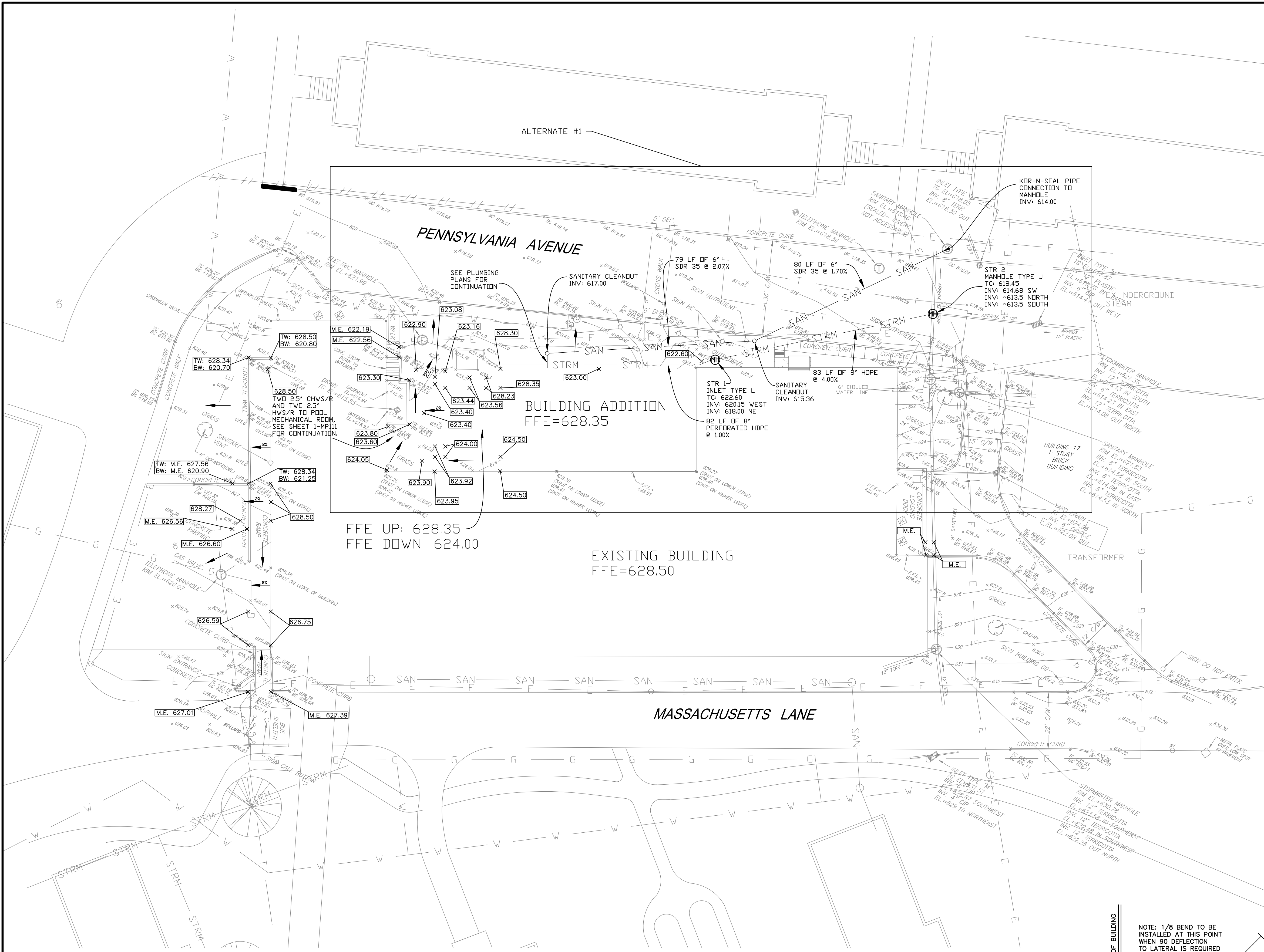


three inches = one foot
one and one half inches = one foot
one inch = one foot
three quarters inch = one foot
one half inch = one foot
three eighths inch = one foot
one quarter inch = one foot
one eighth inch = one foot



MANHOLE PIPE SIZES				
TYPE	G	F	MAXIMUM PIPE SIZE RT. 4 TO MAINLINE	MAXIMUM PIPE SIZE FOR MAINLINE
H	2' TO 3'		2.5'	3'
J	2' TO 3'	5'	2.5'	3'
K	3' TO 4'	6'	3'	4'
L	4' TO 4.5'	8'	4'	4.5'
M	4.5' TO 6'	8.5'	5.5'	6'
N	6' TO 7'	9'	6'	7'

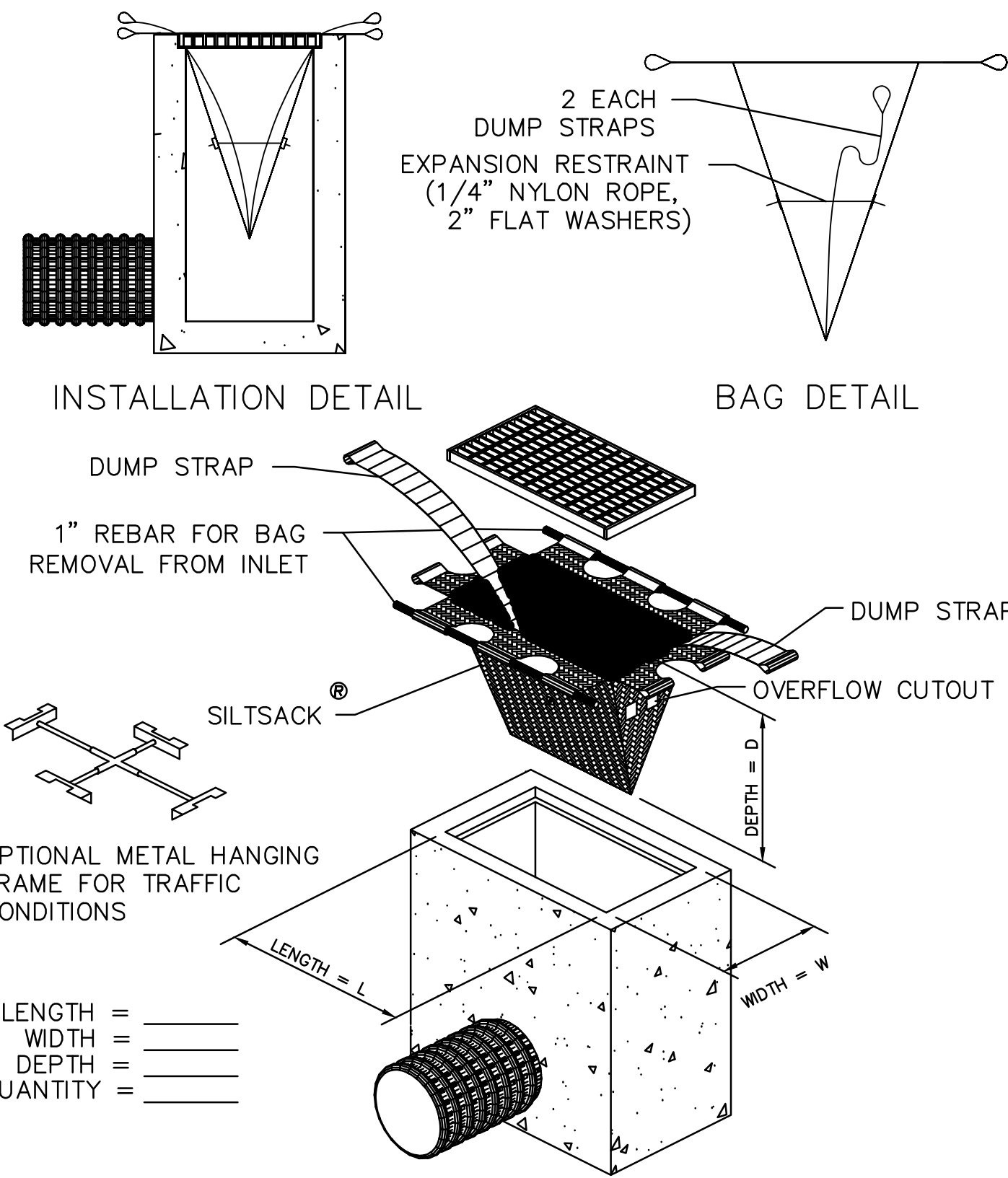
- NOTES:
- DROP PIPE MAY BE USED WITH MANHOLES TYPE H THROUGH TYPE N AND SHALL BE REFERRED TO AS DROP MANHOLE TYPE H THROUGH TYPE N.
 - THE CONTRACTOR WILL BE PERMITTED TO SUBSTITUTE MANHOLES TYPE C THROUGH TYPE F FOR MANHOLES TYPE H THROUGH TYPE N FOR COMPARABLE PIPE SIZES.

6 MANHOLE TYPE J,K,L,M & N

NTS

SITE SYMBOLS - UTILITIES

- GAS — GAS LINE
- E — ELECTRIC LINE
- W — WATER LINE
- STRM — STORM SEWER
- T — TELEPHONE LINE
- SAN — SANITARY SEWER
- 90LB PRESSURE STEAM
- 60LB PRESSURE STEAM
- FUEL — FUEL LINE
- HYDRANT, FIRE
- SANITARY MANHOLE
- ELECTRICAL MANHOLE
- STORM STRUCTURE
- LIGHT POLE
- SWITCH
- TRANSFORMER
- STEAM VAULT
- ⊗ GAS/WATER VALVE
- PC PUMPED CONDENSATE



11 SILTSACK W/ OVERFLOW OUTLET

NTS

NOTE: EXISTING UTILITY INFORMATION SHOWN ON PLAN WAS DERIVED FROM A COMBINATION OF SURVEY AND EXISTING DRAWINGS. CONTRACTOR TO FIELD VERIFY ALL RELEVANT UTILITY LOCATIONS.

TOPOGRAPHIC SURVEY PERFORMED BY HOWELL KLINE SURVEYING, LLC.

FULLY SPRINKLERED
ISSUED FOR BID

Office of
Facilities
Management

Department of
Veterans Affairs

CONSULTANTS:

Project Manager	Architect	Structural Engineer	MERFP Engineer	Civil Engineer	Fire Protection Consultant	Cost Estimator	Aquatic Consultant	Abatement Consultant
BRAY MOONEY CONSULTING	ARRAY HEALTHCARE SOLUTIONS	WZG, STRUCTURAL ENGINEERS	APOGEE CONSULTING GROUP	GUIDON DESIGN	HARRINGTON GROUP	BRAY MOONEY CONSULTING	ATLANTIC AQUATIC ENGINEERING	COLDON CORPORATION
410 E. 21 STREET CHESTER, PA. 19013 Tel: (610) 872-3716	2320 RENAISSANCE BLVD., SUITE 110 KING OF PRUSSIA, PA. 19406 Tel: (610) 270-0599	180 W. RIDGE PIKE LIMERICK, PA. 19448 Tel: (214) 329-0559	7330 CHAPEL HILL ROAD, SUITE 202 RALEIGH, NC. 27606 Tel: (919) 551-9077	2453 N DELAWARE STREET INDIANAPOLIS, IN 46205 Tel: (317) 800-6388	7508 E. INDEPENDENCE BLVD., SUITE 116 CHARLOTTE, NC. 28227 Tel: (704) 551-9077	410 E. 21 STREET CHESTER, PA. 19013 Tel: (610) 872-3716	1823 DEEP RUN ROAD PIPERSVILLE, PA. 18947 Tel: (215) 796-0409	1617 JPK Bld., SUITE 1706 PHILADELPHIA, PA. 19103 Tel: (215) 496-9237

PROJECT MANAGER:

Project Number 3627 Scale 1" = 20'

Bray
Mooney
Consulting

Grading & Utility Plan

Renovate Building 69

VA Project Number 542-CSI-203

Building Number 69

Drawing Number CS102

Ovg. 6 of 86

Approved: Project Director

Location 1400 Black Horse Hill, Coatesville, PA

Date 1-22-14

Checked SLP

Drawn CMB

Revisions Date