

A

three inches = one foot

1

one and one half inches = one foot

2

one inch = one foot

3

three quarters inch = one foot

4

one half inch = one foot

5

three eighths inch = one foot

6

one quarter inch = one foot

7

one eighth inch = one foot

8

one sixteenth inch = one foot

9

one thirty second inch = one foot

10

one sixty fourth inch = one foot

CONSULTANTS:

Project Manager

BRAY MOONEY
CONSULTING

410 E. 21 STREET
CHESTER, PA, 19013
Tel: (610) 872-3716

Architect

ARRAY HEALTHCARE
FACILITIES
SOLUTIONS

2520 RENAISSANCE BLVD.,
SUITE 110
KING OF PRUSSIA, PA, 19406
Tel: (610) 270-0599

Structural Engineer

WZG, STRUCTURAL
CONSULTING
ENGINEERS

180 W. RIDGE PIKE
LIMERICK, PA, 19468
Tel: (214) 329-5559

MEP/FP Engineer

APOGEE
CONSULTING
GROUP

7330 CHAPEL HILL ROAD,
SUITE 202
RALEIGH, NC, 27606
Tel: (919) 859-7420

Civil Engineer

GUIDON DESIGN

2453 N DELAWARE STREET
INDIANAPOLIS, IN 46205
Tel: (317) 800-6386

Fire Protection Consultant

HARRINGTON
GROUP

7508 E. INDEPENDENCE
BLVD., SUITE 116
CHARLOTTE, NC, 28277
Tel: (704) 531-9777

Cost Estimator

BRAY MOONEY
CONSULTING

410 E. 21 STREET
CHESTER, PA, 19013
Tel: (610) 872-3716

Aquatic Consultant

ATLANTIC
AQUATIC
ENGINEERING

1823 DEEP RUN ROAD
PIPERSVILLE, PA, 18947
Tel: (215) 766-0409

PROJECT MANAGER:

Bray
Mooney
Consulting

Project Number

3627

Scale

1/8" = 1'-0"

Drawing Title

BASEMENT POWER PLAN

Project Title

RENOVATE BUILDING 69

VA Project Number

542-CSI-203

Building Number

69

Drawing Number

E-101

Dwg. 72 of 86

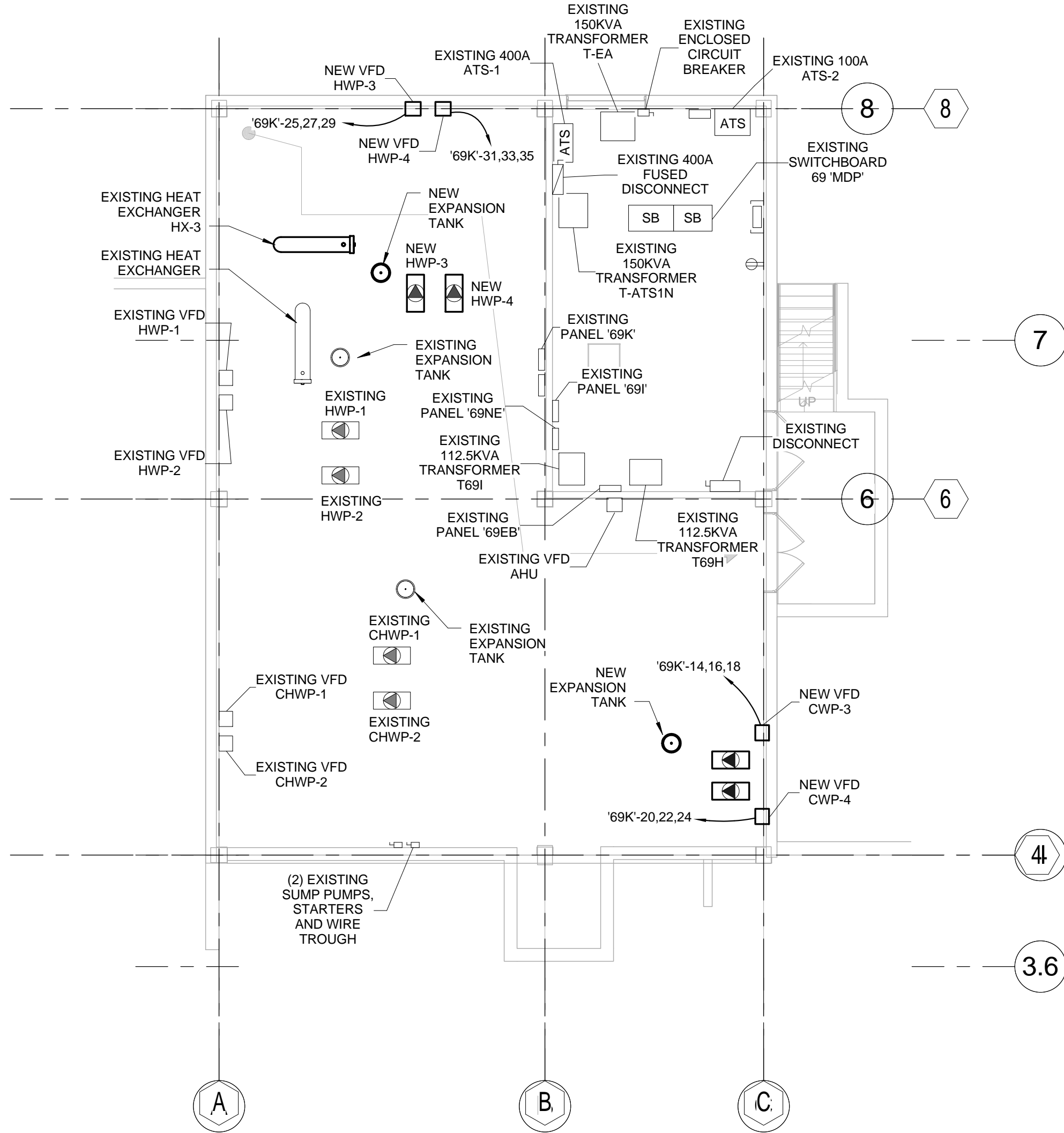
Office of
Facilities
Management



Department of
Veterans Affairs

BASEMENT POWER & LIGHTING PLAN NOTES:

1. ALL RECEPTACLE CONDUCTORS SHALL BE 2-12 AWG, 1-12 AWG EG IN 3/4" EMT UNLESS NOTED OTHERWISE.
2. VERIFY LOCATION OF MECHANICAL EQUIPMENT WITH MECHANICAL DRAWINGS.
3. SEE E-601 FOR EQUIPMENT CONDUCTOR SCHEDULE.



1 BASEMENT POWER PLAN
1/8" = 1'-0"

FULLY SPRINKLERED
ISSUED FOR BID