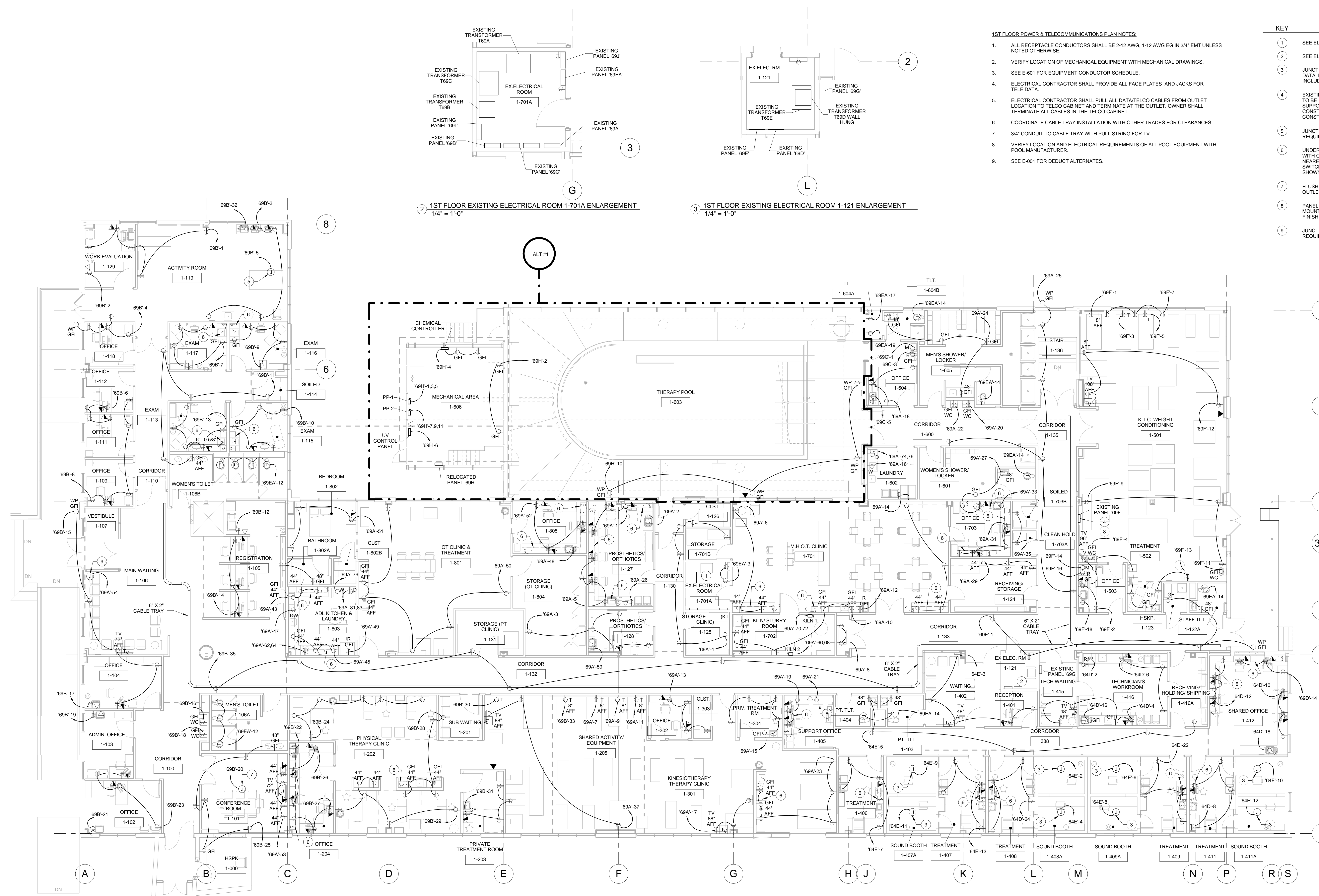
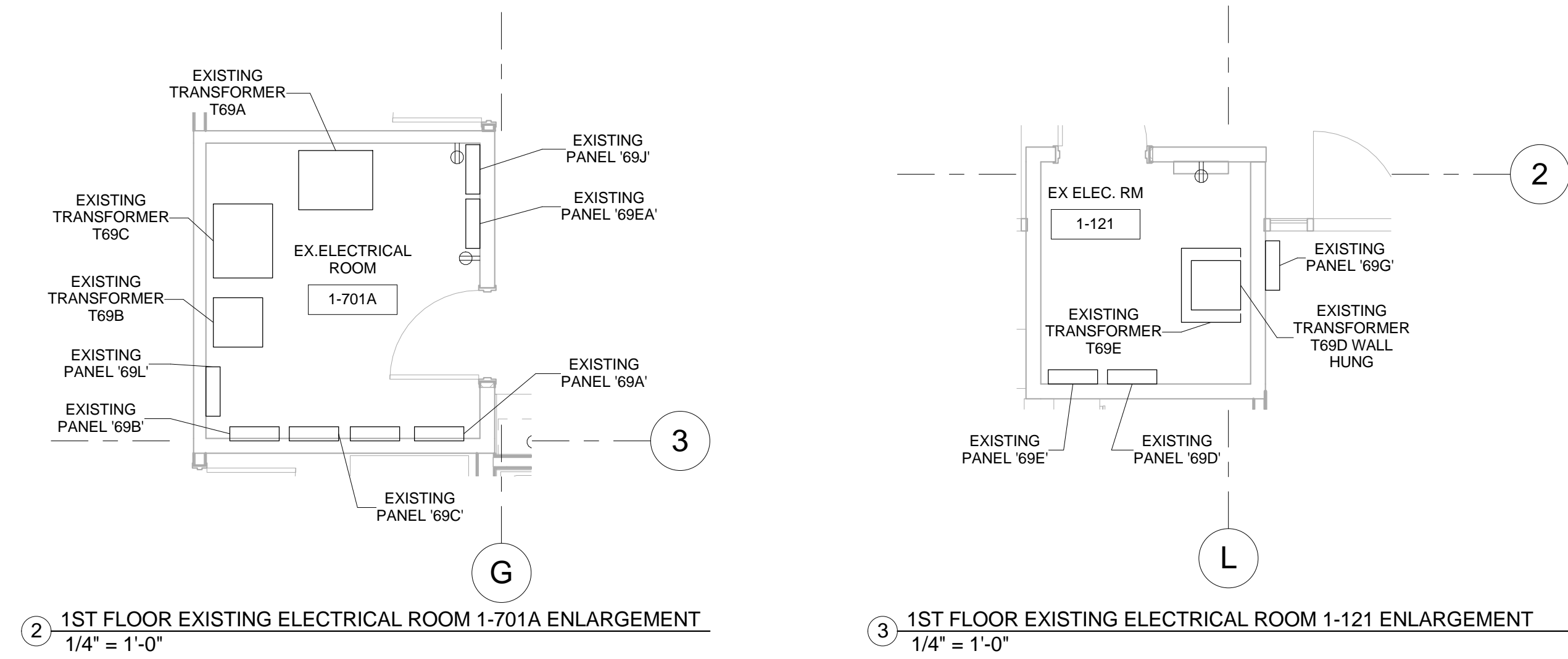


three inches = one foot
one and one half inches = one foot
one inch = one foot
three quarters inch = one foot
one half inch = one foot
three eighths inch = one foot
one quarter inch = one foot
one eighth inch = one foot



1 1ST FLOOR POWER AND TELECOMMUNICATIONS PLAN
1/8" = 1'-0"



- 1ST FLOOR POWER & TELECOMMUNICATIONS PLAN NOTES:
- ALL RECEPTACLE CONDUCTORS SHALL BE 2-12 AWG, 1-12 AWG EG IN 3/4" EMT UNLESS NOTED OTHERWISE.
 - VERIFY LOCATION OF MECHANICAL EQUIPMENT WITH MECHANICAL DRAWINGS.
 - SEE E-601 FOR EQUIPMENT CONDUCTOR SCHEDULE.
 - ELECTRICAL CONTRACTOR SHALL PROVIDE ALL FACE PLATES AND JACKS FOR TELE DATA.
 - ELECTRICAL CONTRACTOR SHALL PULL ALL DATA/TELCO CABLES FROM OUTLET LOCATION TO TELCO CABINET AND TERMINATE AT THE OUTLET. OWNER SHALL TERMINATE ALL CABLES IN THE TELCO CABINET.
 - COORDINATE CABLE TRAY INSTALLATION WITH OTHER TRADES FOR CLEARANCES.
 - 3/4" CONDUIT TO CABLE TRAY WITH PULL STRING FOR TV.
 - VERIFY LOCATION AND ELECTRICAL REQUIREMENTS OF ALL POOL EQUIPMENT WITH POOL MANUFACTURER.
 - SEE E-001 FOR DEDUCT ALTERNATES.

KEY	NOTE
1	SEE ELECTRICAL ROOM 1-701A ENLARGEMENT 2/E-102.
2	SEE ELECTRICAL ROOM 1-121 ENLARGEMENT 3/E-102.
3	JUNCTION BOX FOR SOUND BOOTH. COORDINATE ELECTRICAL AND DATA REQUIREMENTS AND CONNECTION WITH MANUFACTURER, INCLUDING PANIC BUTTON CONNECTION.
4	EXISTING PANEL 69F TO REMAIN. EXISTING WALL SUPPORTING PANEL TO BE DEMOLISHED. CONTRACTOR SHALL PROVIDE TEMPORARY SUPPORT FOR PANEL DURING DEMOLITION AND UNTIL NEW WALL IS CONSTRUCTED. ROUGH IN NEW WALL AS WALL IS BEING CONSTRUCTED.
5	JUNCTION BOX FOR RELOCATED LIFT. VERIFY ELECTRICAL REQUIREMENTS BEFORE RELOCATING AND INSTALLING.
6	UNDERCABINET TASK LIGHTING. COORDINATE LENGTH AND MOUNTING WITH CABINETS AND ARCHITECTURAL DRAWINGS. CIRCUIT FROM NEAREST RECEPTACLE CIRCUIT IN THE SAME ROOM. INSTALL WALL SWITCH FOR EACH CONTINUOUS RUN OF UNDERCABINET LIGHTING AS SHOWN.
7	FLUSH CEILING MOUNTED 120V DUPLEX RECEPTACLE AND DATA OUTLET FOR PROJECTOR.
8	PANEL SHALL BE RECESSED INTO NEW WALL. PROVIDE NEW FLUSH MOUNT COVER. STUB UP FOUR (4) 3/4" EMT CONDUITS TO ABOVE FINISH CEILING FOR FUTURE USE.
9	JUNCTION BOX FOR SNOW MELT SYSTEM. COORDINATE LOCATION AND REQUIREMENTS WITH MECHANICAL CONTRACTOR.

CONSULTANTS:				PROJECT MANAGER:		Project Number 3627	Scale As indicated	Drawing Title 1ST FLOOR POWER AND TELECOMMUNICATIONS PLAN	Project Title RENOVATE BUILDING 69	VA Project Number 542-CSI-203	Office of Facilities Management
Project Manager BRAY MOONEY CONSULTING 410 E. 21 STREET CHESTER, PA 19013 Tel: (610) 872-3716	Architect ARRAY HEALTHCARE SOLUTIONS 2530 RENAISSANCE BLVD., SUITE 110 KING OF PRUSSIA, PA 19406 Tel: (610) 270-0599	Structural Engineer WZG, STRUCTURAL ENGINEERS 180 W. RIDGE PIKE LIMERICK, PA 19449 Tel: (214) 329-5559	MEP/FP Engineer APOGEE CONSULTING GROUP 7330 CHAPEL HILL ROAD, SUITE 202 RALEIGH, NC 27606 Tel: (919) 659-7420	Civil Engineer GUIDON DESIGN 2453 N DELAWARE STREET INDIANAPOLIS, IN 46205 Tel: (317) 800-6386	Fire Protection Consultant HARRINGTON GROUP 7508 E. INDEPENDENCE BLVD., SUITE 116 CHARLOTTE, NC 28277 Tel: (704) 531-9577	Cost Estimator BRAY MOONEY CONSULTING 410 E. 21 STREET CHESTER, PA 19013 Tel: (610) 872-3716	Aquatic Consultant ATLANTIC AQUATIC ENGINEERING 1823 DEEP RUN ROAD PIPERSVILLE, PA 18447 Tel: (215) 766-0409	Approved: Project Director	Location 1400 Black Horse Hill, Coatesville, PA	Drawing Number E-102 Dwg. 73 of 86	
Revisions								Date	Date 1/22/2014	Checked CGS/WCM	Drawn KLC
Date								Date	Date	Date	Date