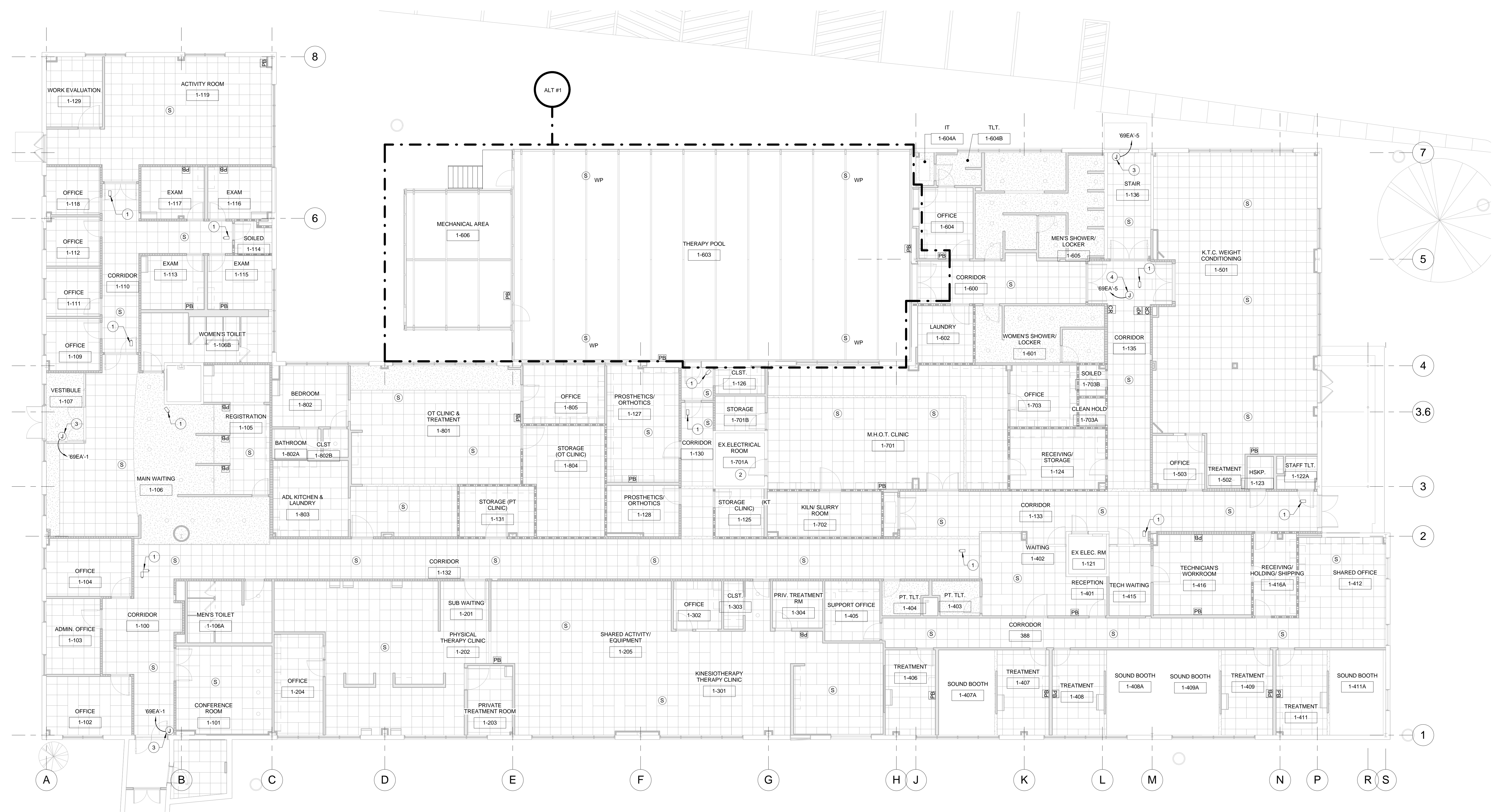


| KEY | NOTE  |
|-----|---|
| ①   | SECURITY CAMERA LOCATION. COORDINATE WITH SECURITY CONTRACTOR.  |
| ②   | LOCATION OF PA SYSTEM HEAD END UNIT AND AMPLIFIER. PROVIDE 120 VOLT 20 AMP CIRCUIT FROM PANEL 69EA-2. |
| ③   | JUNCTION BOX ABOVE CEILING FOR AUTOMATIC DOOR POWER.  |
| ④   | JUNCTION BOX ABOVE CEILING FOR CARD READER POWER.   |

- 1ST FLOOR ELECTRICAL SYSTEMS PLAN NOTES:
- INSTALL NEW PA SPEAKERS AS INDICATED. COORDINATE LOCATIONS WITH OTHER DISCIPLINES AND TRADES.
  - NEW EQUIPMENT MUST OPERATE, INTERFACE, AND CONNECT TO EXISTING HOSPITAL SYSTEM SEAMLESSLY.
  - ALL PA SYSTEM WIRING TO BE IN CONDUIT.
  - PROVIDE 1" CONDUIT TO RUN WITHIN 6" OF CABLE TRAY FOR CAMERA. PROVIDE PULL STRING IN EMPTY CONDUIT.
  - SEE E-001 FOR DEDUCT ALTERNATES.



① 1ST FLOOR ELECTRICAL SYSTEMS PLAN  
1/8" = 1'-0"

FULLY SPRINKLERED  
ISSUED FOR BID

|   |  |  |  |   |  |  |  |  |  |                       |  |   |  |                                       |  |   |  |   |  |   |  |  |  |  |  |
|---|--|--|--|---|--|--|--|--|--|-----------------------|--|---|--|---------------------------------------|--|---|--|---|--|---|--|--|--|--|--|
| <b>CONSULTANTS:</b>   |  |  |  | <b>PROJECT MANAGER:</b>   |  |  |  | Project Number<br>3627   |  | Scale<br>1/8" = 1'-0" |  | Drawing Title<br>1ST FLOOR ELECTRICAL SYSTEMS PLAN                                    |  | Project Title<br>RENOVATE BUILDING 69 |  | VA Project Number<br>542-CSI-203                            |  | <b>Office of<br/>Facilities<br/>Management</b><br><br>Department of<br>Veterans Affairs |  |   |  |  |  |  |  |
| <b>Bray Mooney Consulting</b>                                 |  |  |  | <b>Bray Mooney Consulting</b>   |  |  |  |  |  |                       |  |   |  |                                       |  |   |  |   |  |   |  |  |  |  |  |
| 410 E. 21 STREET<br>CHESTER, PA 19013<br>Tel (610) 872-3716   |  |  |  | 2530 RENAISSANCE BLVD.,<br>SUITE 110<br>KING OF PRUSSIA, PA 19406<br>Tel (610) 270-0599 |  |  |  | 180 W. RIDGE PIKE<br>LIMERICK, PA 19468<br>Tel (214) 329-5559          |  |                       |  | 7330 CHAPEL HILL ROAD,<br>SUITE 202<br>RALEIGH, NC 27606<br>Tel (919) 859-7420        |  |                                       |  |   |  |   |  |   |  |  |  |  |  |
| 180 W. RIDGE PIKE<br>LIMERICK, PA 19468<br>Tel (214) 329-5559 |  |  |  | 7330 CHAPEL HILL ROAD,<br>SUITE 202<br>RALEIGH, NC 27606<br>Tel (919) 859-7420          |  |  |  | 2453 N DELAWARE STREET<br>INDIANAPOLIS, IN 46205<br>Tel (317) 800-6386 |  |                       |  | 7508 E. INDEPENDENCE<br>BLVD., SUITE 116<br>CHARLOTTE, NC 28277<br>Tel (704) 531-9777 |  |                                       |  | 410 E. 21 STREET<br>CHESTER, PA 19013<br>Tel (610) 872-3716 |  |   |  | 1823 DEEP RUN ROAD<br>PIPERSVILLE, PA 18947<br>Tel (215) 766-0409 |  |  |  |  |  |
| Revisions   |  |  |  | Date  |  |  |  |  |  |                       |  |   |  | Approved: Project Director            |  | Location<br>1400 Black Horse Hill, Coatesville, PA          |  | Drawing Number<br>E-105   |  |   |  |  |  |  |  |
|   |  |  |  |   |  |  |  |  |  |                       |  |   |  | Date<br>1/22/2014                     |  | Checked<br>CGS/WCM  |  | Drawn<br>KLC  |  | Dwg. 76 of 86   |  |  |  |  |  |