

ALTERNATES

ALT #1

Add Alternate #1:

Construction and fit out of therapy pool, mechanical area (1-606), pool enclosure (1-603), associated roofing, specialty equipment housed within the pool area, doors 600B, 603, 604B, and sidelight 604 are all alternate.

Base bid to include demolition of mechanical unit, slab, and fence (D8); demolition of concrete ramp and canopy (D2, D1, D11); demolition of exterior door near column G4 and subsequent infill of exterior wall.

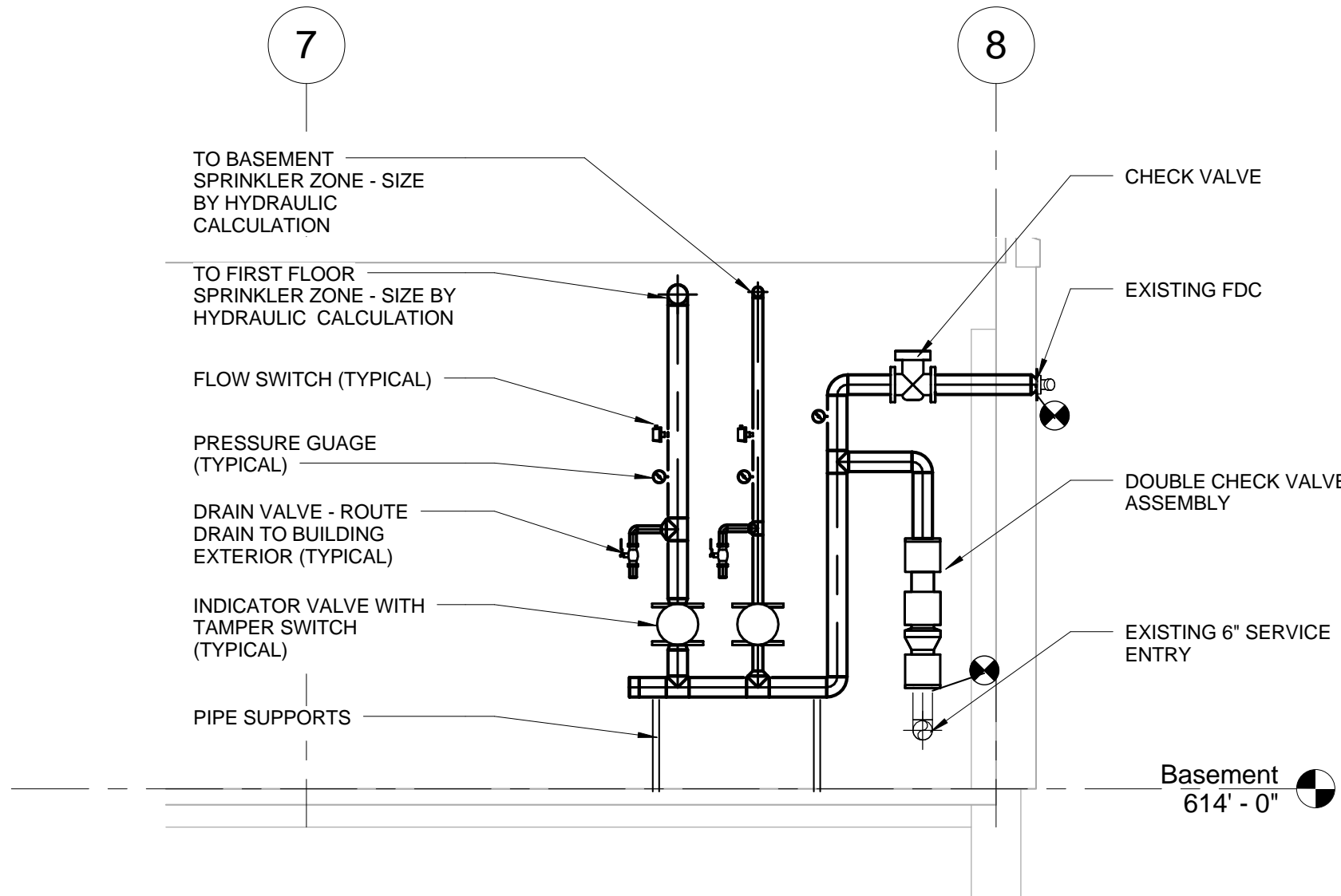
Plumbing sheets: PP101, PP111, PP112, PP113, PP301, PP302, and PP601 (all plumbing work related to therapy pool).

Mechanical sheets: MH111, MH401, MH503, MH504, MP101, MP111, and MH602 (all mechanical work related to therapy pool).

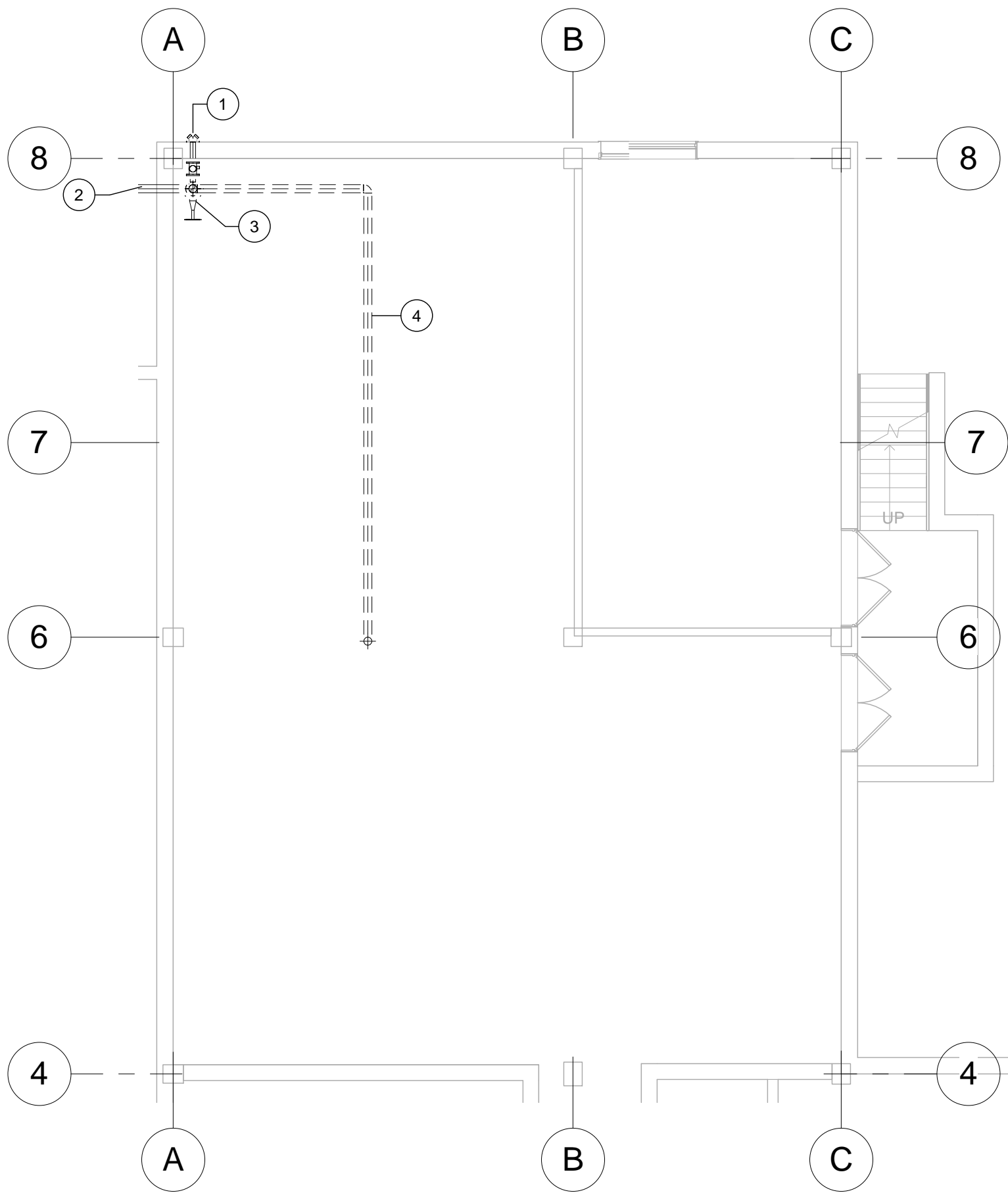
Electrical sheets: ED101, E-102, E-103, E-104, E-105, E-601, E-603, E-604 and FA102 (all electrical work related to therapy pool).

- FIRE SUPPRESSION GENERAL NOTES
- SCOPE OF WORK IS TO REPLACE THE SPRINKLER SYSTEM IN BUILDING 69. THE SPRINKLER SYSTEM SHALL BE INSTALLED AND TESTED IN ACCORDANCE WITH NFPA 13, LATEST EDITION, GOVERNMENT REGULATIONS, AND PROJECT DOCUMENTS. SEE SPECIFICATION SECTION 211313.
 - ALL PIPING AND APPURTENANCES SHOWN FOR DIAGRAMMATIC PURPOSES ONLY. CONTRACTOR SHALL BE RESPONSIBLE FOR DESIGNING AND INSTALLING A SYSTEM THAT COMPLIES WITH NFPA 13, GOVERNMENT REGULATIONS, AND PROJECT DOCUMENTS.
 - THE HAZARD CLASSIFICATIONS OF THE BUILDING INCLUDE LIGHT HAZARD (PATIENT CARE AND TREATMENT AREAS), ORDINARY HAZARD GROUP 1 (MECHANICAL EQUIPMENT ROOMS), AND ORDINARY HAZARD GROUP 2 (STORAGE, CLEAN, AND SOILED UTILITY ROOMS).
 - ALL NEW SPRINKLER SYSTEMS SHALL BE DESIGNED USING THE AREA/DENSITY METHOD OF NFPA 13, LATEST ED.
 - QUICK RESPONSE SPRINKLERS SHALL BE USED THROUGHOUT AS STIPULATED BY NFPA 13. COVERAGE PER SPRINKLER SHALL BE IN COMPLIANCE WITH NFPA 13, LATEST EDITION. USE OF EXTENDED COVERAGE SPRINKLERS SHALL NOT BE PERMITTED.
 - THE SPRINKLER SYSTEM SHALL BE FED FROM THE EXISTING ENTRY POINT IN THE BASEMENT.
 - ALL PIPING 2-1/2 INCH THROUGH 6 INCH MAY BE SCHEDULE 10. ALL PIPE LARGER THAN 6 INCH SHALL BE GALVANIZED. ALL PIPING 2 INCH AND SMALLER SHALL BE SCHEDULE 40. CPVC PIPING IS NOT ALLOWED.
 - ALL EXPOSED PIPING SHALL BE PAINTED IN ACCORDANCE WITH PAINTING SPEC.
 - ALL MATERIALS USED SHALL BE UL LISTED AND FM APPROVED FOR FIRE PROTECTION SERVICE. SPRINKLERS MUST BE FM APPROVED
 - THE CONTRACTOR SHALL RECEIVE WRITTEN APPROVAL FROM THE STRUCTURAL ENGINEER OF RECORD PRIOR TO PENETRATION OF ANY STRUCTURAL MEMBER. CONTRACTOR SHALL FORWARD A COPY OF THE APPROVAL TO THE FIRE PROTECTION ENGINEER OF RECORD. IN ADDITION, ALL SEISMIC CALCULATIONS SHALL BE REVIEWED AND APPROVED BY A LICENSED STRUCTURAL ENGINEER PRIOR TO SUBMITTAL.
 - SPRINKLER PIPING SHALL BE SUPPORTED FROM STRUCTURAL MEMBERS WITH APPROVED HANGERS, OR HANGER SYSTEM, SPACED AS PRESCRIBED BY NFPA 13, LATEST EDITION.
 - PIPE VALVES AND FITTINGS USED IN THE SPRINKLER SYSTEM SHALL BE DESIGNED TO WITHSTAND NOT LESS THAN 175 PSI COLD WATER PRESSURE.
 - ALL SPRINKLER SYSTEM INSTALLATIONS SHALL BE COORDINATED WITH ALL OTHER TRADES PRIOR TO FABRICATION AND INSTALLATION. SYSTEM SHALL BE CONFIGURED SO THAT SPRINKLER DISCHARGE IS NOT AFFECTED BY OBSTRUCTIONS SUCH AS BEAMS, DUCTWORK, AND LIGHT FIXTURES.
 - PIPE SLEEVES THROUGH FLOOR AND WALLS SHALL BE SIZED BY SPRINKLER CONTRACTOR STRICKLY IN ACCORDANCE WITH SECTION 9.3.4 OF NFPA 13, LATEST EDITION. GAPS AND VOID SPACES SHALL BE SEALED AROUND THE PIPE SLEEVE AND SYSTEM PIPE WITH A UL LISTED TWO-HOUR FIRE RATE THRU STOP PENETRATING SYSTEM WHERE RATED WALLS AND FLOORS ARE PENETRATED.
 - SPRINKLERS SHALL NOT BE PAINTED.

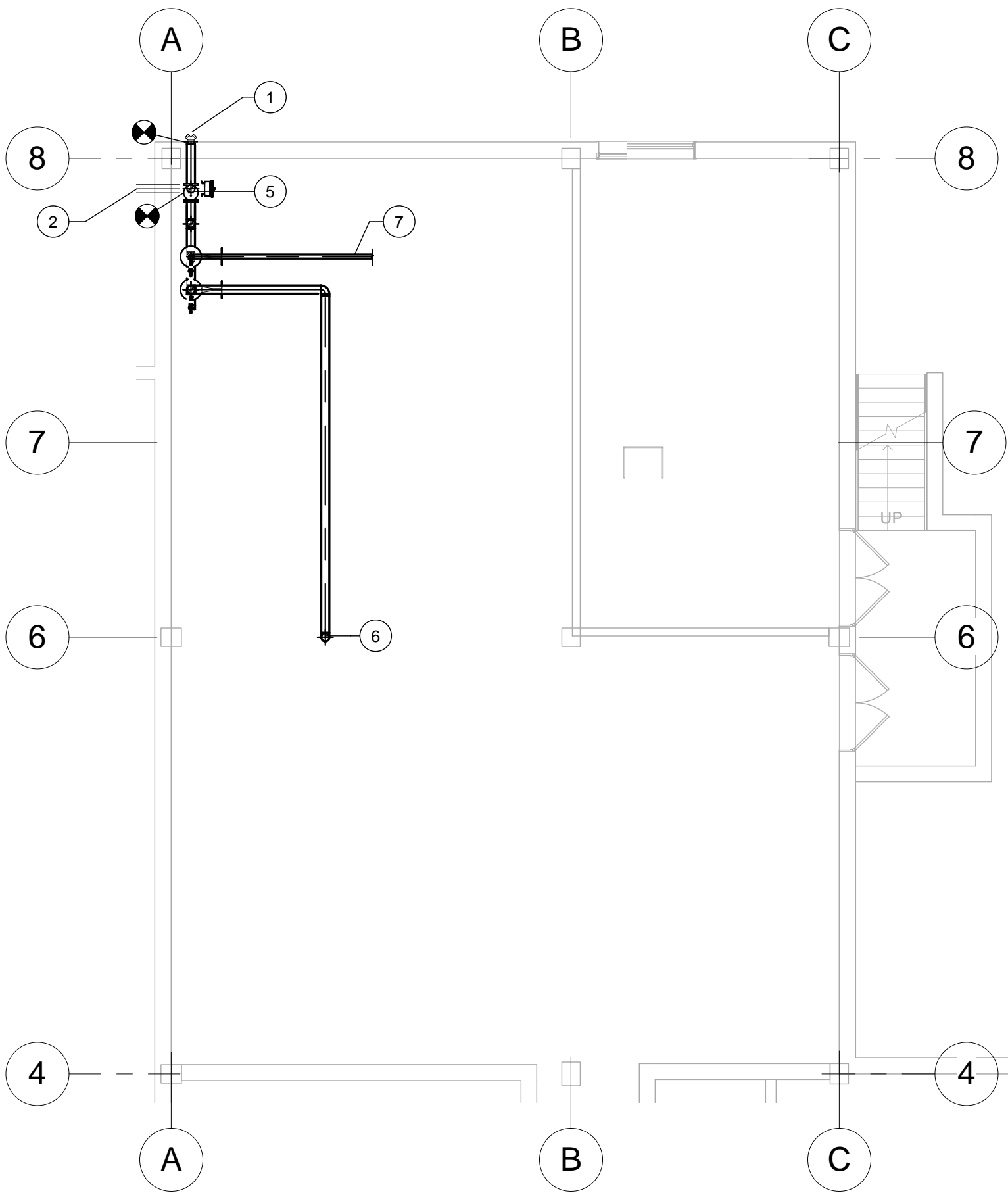
KEY	NOTE
1	EXISTING FIRE DEPARTMENT CONNECTION TO REMAIN.
2	EXISTING 6" FIRE PROTECTION WATER SERVICE ENTRANCE TO REMAIN.
3	EXISTING FIRE RISER TO BE REMOVED TO THE POINT OF FLANGED CONNECTION OF SERVICE ENTRANCE.
4	EXISTING SPRINKLER MAIN AND ASSOCIATED BRANCH PIPING TO BE REMOVED COMPLETE.
5	FIRE RISER. SEE DETAIL 3/F-101
6	SPRINKLER MAIN UP TO FIRST FLOOR
7	SPRINKLER MAIN TO BASEMENT SPRINKLER ZONE



3 FIRE RISER DETAIL
1/4" = 1'-0"



1 BASEMENT FIRE SUPPRESSION DEMOLITION PLAN
1/8" = 1'-0"



2 BASEMENT FIRE SUPPRESSION PLAN
1/8" = 1'-0"

		CONSULTANTS:										PROJECT MANAGER:		Project Number 3627	Scale As indicated	Drawing Title GENERAL NOTES, LEGEND AND BASEMENT FIRE SUPPRESSION PLANS		Project Title RENOVATE BUILDING 69		VA Project Number 542-CSI-203		Office of Facilities Management			
		Project Manager BRAY MOONEY CONSULTING		Architect ARRAY HEALTHCARE FACILITIES SOLUTIONS		Structural Engineer WZG, STRUCTURAL CONSULTING ENGINEERS		MEP/FP Engineer APOGEE CONSULTING GROUP		Civil Engineer GUIDON DESIGN		Fire Protection Consultant HARRINGTON GROUP		Cost Estimator BRAY MOONEY CONSULTING		Aquatic Consultant ATLANTIC AQUATIC ENGINEERING		Associate Architects W. COOK ARCHITECTS							
		410 E. 21 STREET CHESTER, PA, 19013 Tel: (610) 872-3716		2520 RENAISSANCE BLVD. SUITE 110 KING OF PRUSSIA, PA, 19406 Tel: (610) 270-0599		P.O. BOX 24 40 LITTLE ROAD ZIEGLERVILLE, PA, 19482 Tel: (610) 287-3194		7330 CHAPEL HILL ROAD, SUITE 202 RALEIGH, NC, 27606 Tel: (919) 659-7420		2453 N DELAWARE STREET INDIANAPOLIS, IN 46205 Tel: (317) 600-6388		7508 E. INDEPENDENCE BLVD., SUITE 116 CHARLOTTE, NC, 28227 Tel: (704) 531-9077		410 E. 21 STREET CHESTER, PA, 19013 Tel: (610) 872-3716		1823 DEEP RUN ROAD PIPERSVILLE, PA, 18947 Tel: (215) 786-0409		1251 ROMANSVILLE ROAD COATESVILLE, PA, 19320 Tel: (610) 383-4460							
Revisions		Date												Bray Mooney Consulting		Approved: Project Director		Location 1400 Black Horse Hill, Coatesville, PA		Drawing Number F-101		Dwg. 66 of 86			
																		Date 1/22/2014		Checked DJR				Drawn DJR	