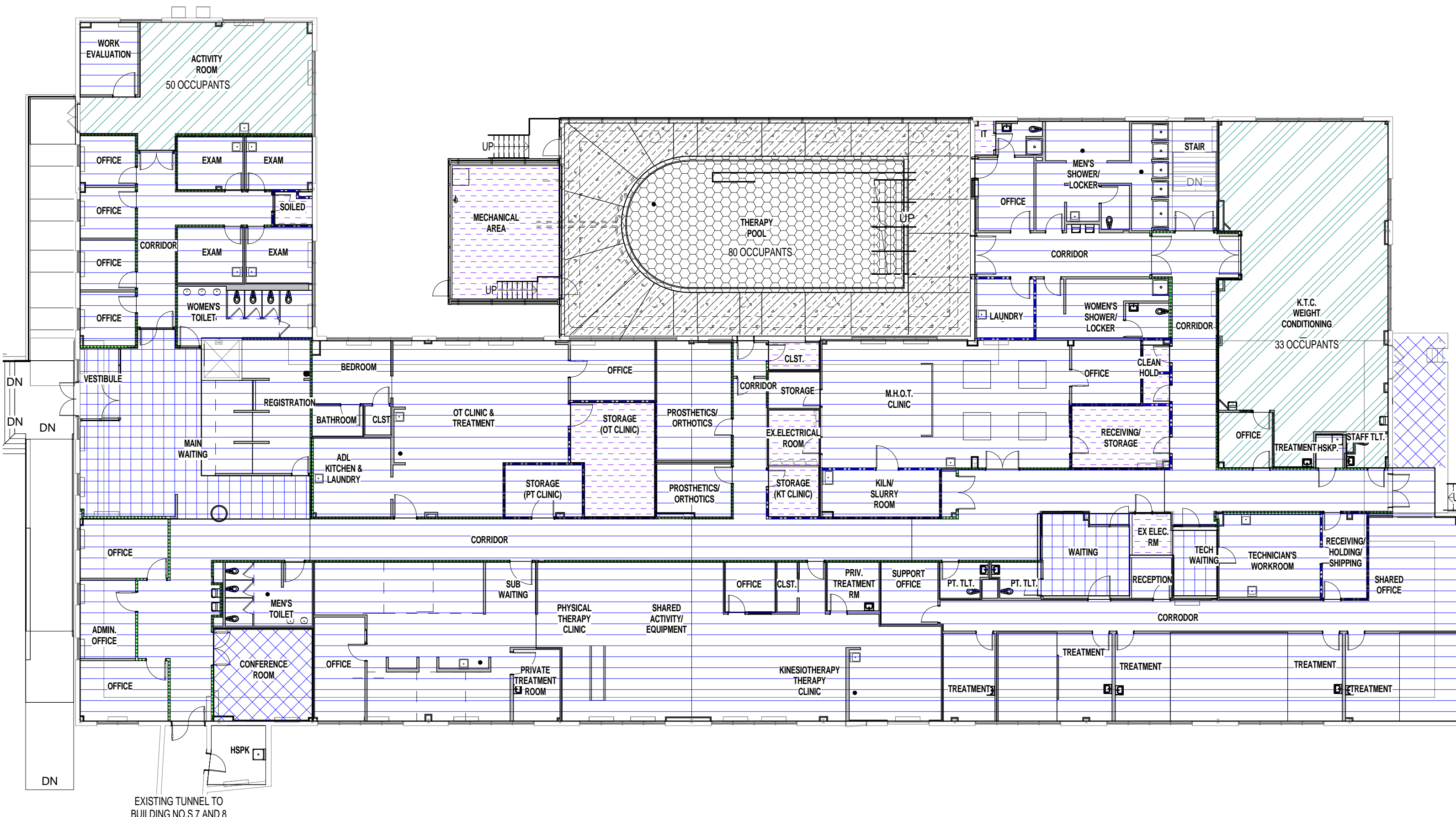


C1 FIRST FLOOR LIFE SAFETY PLAN
1/16" = 1'-0"

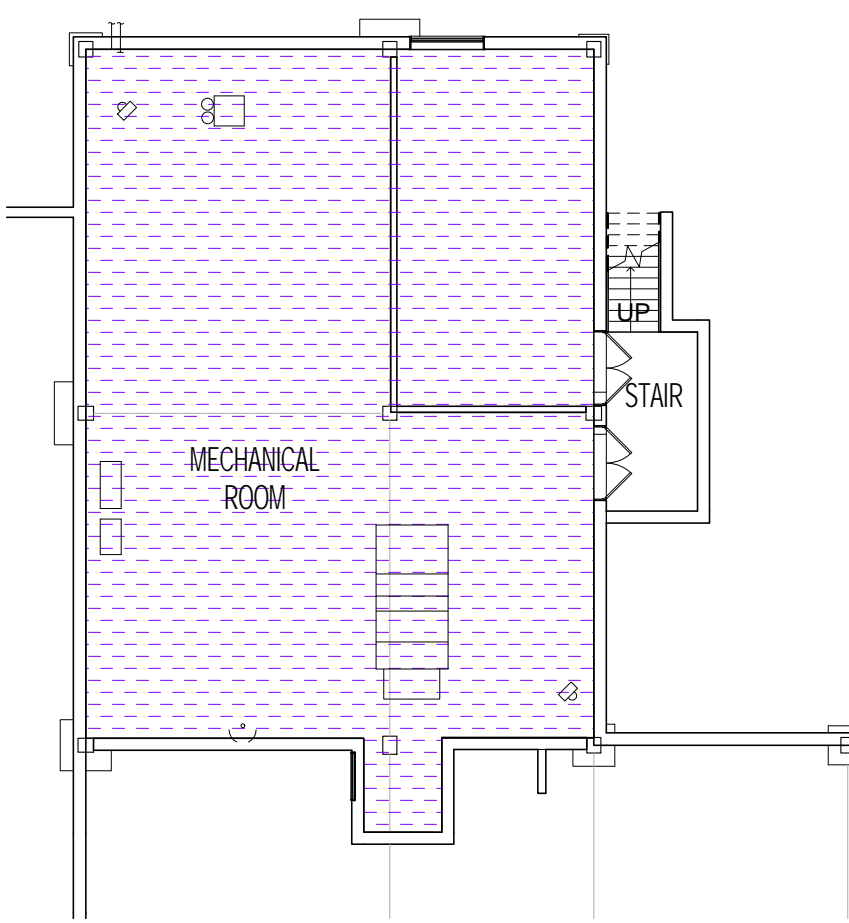


F1 FIRST FLOOR OCCUPANCY PLAN
1/16" = 1'-0"

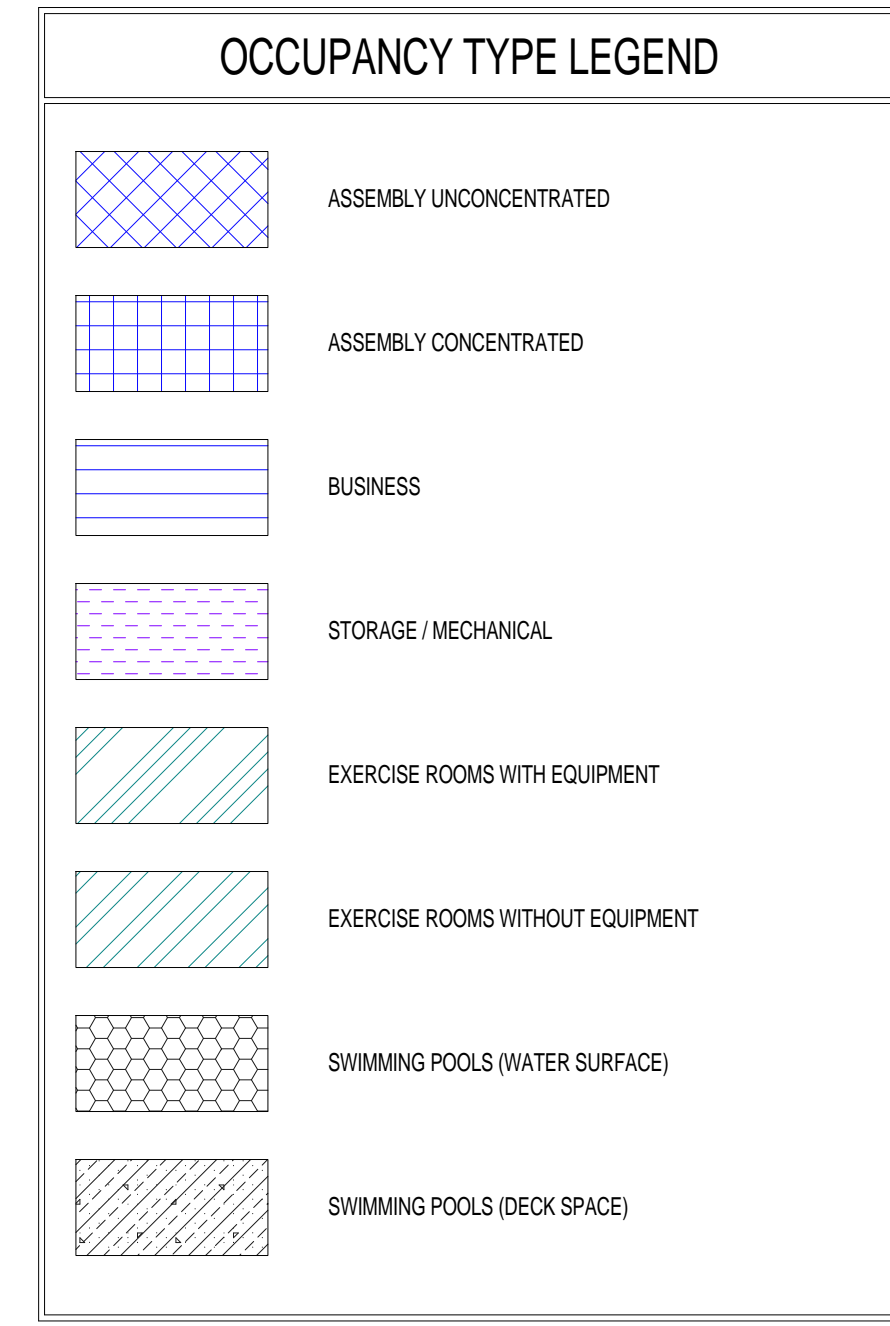
PROJECT AREA SUMMARY	
EXISTING BASEMENT	2,481 S.F.
EXISTING FIRST FLOOR	22,780 S.F.
NEW ADDITION	3,368 S.F.
TOTAL AREA	28,629 S.F.

BUILDING CONSTRUCTION TYPE	
NFPA 101 2012	IBC 2012
TYPE 2 (000)	2B

BUILDING OCCUPANT LOAD				
EXISTING BASEMENT				
USE	AREA (SF)	SF/PERSON	LOAD	
ASSEMBLY CONCENTRATED	-	7 NET	-	
ASSEMBLY UNCONCENTRATED	-	15 NET	-	
BUSINESS	-	100 GROSS	-	
INPATIENT SLEEPING	-	120 GROSS	-	
INPATIENT TREATMENT	-	240 GROSS	-	
OUTPATIENT TREATMENT	-	100 GROSS	-	
STORAGE/MECHANICAL	2,481 S.F.	300 GROSS	10	
TOTAL LOAD	2,481 S.F.	-	10	
EXISTING FIRST FLOOR				
USE	AREA (SF)	SF/PERSON	LOAD	
ASSEMBLY CONCENTRATED	1,214 S.F.	7 NET	173	
ASSEMBLY UNCONCENTRATED	536 S.F.	15 NET	36	
BUSINESS	17,507 S.F.	100 GROSS	175	
SWIMMING POOLS (WATER SURFACE)	-	50 GROSS	-	
SWIMMING POOLS (DECK)	-	30 GROSS	-	
STORAGE/MECHANICAL	907 S.F.	500 GROSS	2	
EXERCISE ROOMS WITH EQUIPMENT	1,882 S.F.	50 GROSS	38	
EXERCISE ROOMS WITHOUT EQUIPMENT	744 S.F.	15 GROSS	50	
TOTAL LOAD	22,780 S.F.	-	473	
NEW ADDITION				
USE	AREA (SF)	SF/PERSON	LOAD	
ASSEMBLY CONCENTRATED	-	7 NET	-	
ASSEMBLY UNCONCENTRATED	-	15 NET	-	
BUSINESS	-	100 GROSS	-	
SWIMMING POOLS (WATER SURFACE)	1,237 S.F.	50 GROSS	25	
SWIMMING POOLS (DECK)	1,642 S.F.	30 GROSS	55	
STORAGE/MECHANICAL	488 S.F.	500 GROSS	1	
EXERCISE ROOMS WITH EQUIPMENT	-	50 GROSS	-	
EXERCISE ROOMS WITHOUT EQUIPMENT	-	15 GROSS	-	
TOTAL LOAD	3,368 S.F.	-	81	

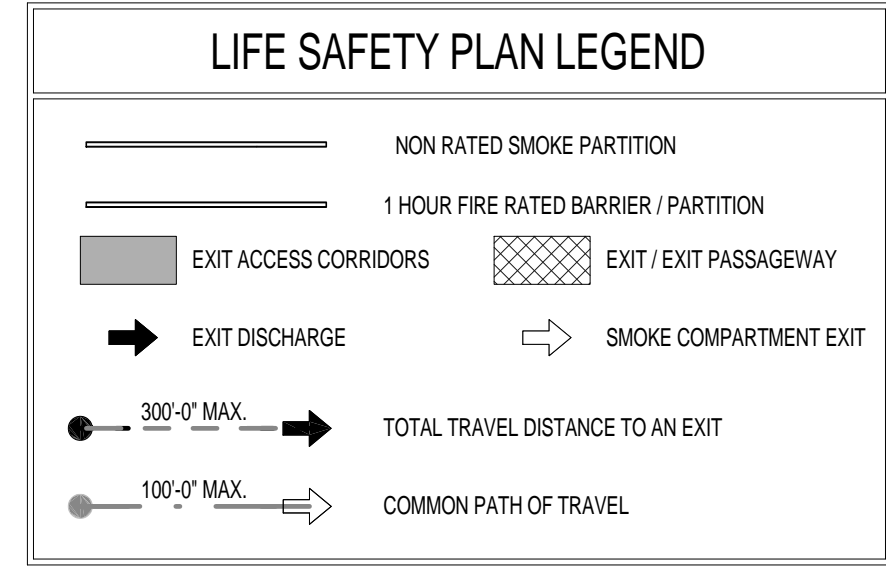


F5 BASEMENT LIFE SAFETY PLAN
1/16" = 1'-0"



CODE REQUIREMENTS FOR RENOVATION			
APPLICABLE CODES:		ABAS INCLUDING VA SUPPLEMENT, BARRIER FREE DESIGN GUIDE PG-18-13	
NFPA 101 LIFE SAFETY CODE 2012		BUILDING CODE REQUIREMENTS FOR REINFORCED CONCRETE, ACI 318	
INTERNATIONAL BUILDING CODE 2012		AISC MANUAL OF STEEL CONSTRUCTION, LOAD AND RESISTANCE FACTOR DESIGN SPECIFICATIONS FOR STRUCTURAL STEEL BUILDINGS	
NFPA NATIONAL FIRE CODES WITH THE EXCEPTION OF NFPA 5000 AND NFPA 900		THE PROVISIONS FOR CONSTRUCTION AND SAFETY SIGNS, STATED IN THE GENERAL REQUIREMENTS SECTION 01010 OF THE VA MASTER CONSTRUCTION SPECIFICATION	
OSHA STANDARDS		VENTILATION FOR ACCEPTABLE INDOOR AIR QUALITY - ASHRAE STANDARD 62-1-2004	
VA SEISMIC DESIGN REQUIREMENTS, H-18-8		SAFETY STANDARD FOR REFRIGERATION SYSTEMS - ASHRAE STANDARD 15-2007	
NATIONAL ELECTRICAL CODE		ASHRAE STANDARD 90.1-2007 ENERGY STANDARD FOR BUILDINGS EXCEPT LOW RISE RESIDENTIAL BUILDINGS	
ENERGY POLICY ACT 2005			
NATIONAL STANDARD PLUMBING CODE			
ASME BOILER AND PRESSURE VESSEL CODE			
ASME CODE FOR PRESSURE PIPING			
BUILDING CODE		NFPA 101	
BUILDING OCCUPANCY CLASSIFICATION		BUSINESS	
TYPE OF CONSTRUCTION		TYPE 2 (0.0.0)	
EXISTING BUILDING HEIGHT		1 STORY + BASEMENT	
EXISTING BUILDING AREA		25,261 S.F.	
PROJECT AREA		28,629 S.F.	
FIRE SUPPRESSION SYSTEM		NFPA 13 SPRINKLER SYSTEM	
SEISMIC / WIND REQUIREMENTS			
OCCUPANCY CATEGORY		N/A	
SEISMIC DESIGN CATEGORY		N/A	
WIND ZONE		N/A	
CORRIDOR WIDTH			
CORRIDOR SERVING 49 PEOPLE OR LESS		36 INCHES	
CORRIDORS SERVING 50 PEOPLE OR MORE		44 INCHES	
ALLOWABLE DEAD END CORRIDOR		50 FEET	
TRAVEL DISTANCE			
MAXIMUM ALLOWABLE TRAVEL DISTANCE		300 FEET	
COMMON PATH OF TRAVEL		100 FEET	
OCCUPANT		SEE SHEET G1003	
OCCUPANT LOAD			
EXIT			
(MINIMUM) NUMBER OF EXITS REQUIRED		2 REQUIRED (<500 OCCUPANT) 3 REQUIRED (501-1000 OCCUPANT) 4 REQUIRED (>1000 OCCUPANT)	
EXIT CAPACITY		SEE SHEET G1003	
(MINIMUM) STAIR, DOOR AND CORRIDOR WIDTH		36" / 0.3 = 320 (EXISTING STAIR) 36" / 0.2 = 360	
CORRIDOR FIRE-RESISTANT RATING		N/A	
INTERIOR FINISHES		NON-RATED (38.3.6.1(c))	
INTERIOR WALL AND CEILING FINISH REQUIREMENTS		EXIT	CLASS A OR B
INTERIOR FLOOR FINISH REQUIREMENTS		CORRIDORS	CLASS A OR B
		ROOMS	CLASS A OR B
		CLASS 1 OR 2	

FIRE RATINGS		
NON-LOADBEARING WALLS AND PARTITIONS	HOURS	UL DESIGN #
FIRE WALLS (705)	2	N/A
EXIT ENCLOSURES (706.3.2 / 1020.1)	1	# U465U1419
EXITS PASSAGEWAY (706.3.3 / 1021.1)	1	N/A
HORIZONTAL EXITS (706.3.4 / 1022.1)	2	N/A
INCIDENTAL USE AREAS (706.3.6 / 508.2)	1	# U465U1419
OCCUPANCIES SEPARATION (706.3.8 / 508.3.2)	2	N/A
FIRE PARTITIONS (708)	1	N/A
SMOKE BARRIERS (709)	1	N/A
SHAFT ENCLOSURES (707.4)	1	# U465U1415
CORRIDOR WALLS (708.3 / 1017.1)	0	N/A
GENERAL NOTES:		
1) ALL RATED INTERIOR PARTITION SHOULD BE CONSTRUCTED IN ACCORDANCE WITH THE RATED PARTITION SCHEDULE UNLESS NOTED OTHERWISE ON THE FLOOR PLANS		
2) CONTRACTOR TO PATCH AND REPAIR ALL NEW AND EXISTING FIREPROOFING AFTER INSTALLATION OF NEW WORK AS REQUIRED TO MAINTAIN REQUIRED FIRE RATING. CONTRACTOR TO USE MATERIALS COMPATIBLE WITH EXISTING FIREPROOFING FOR PATCH WORK.		



NOTE: SEE SHEET AE-002 FOR ALTERNATES

FULLY SPRINKLERED
ISSUED FOR BID

Revisions

Date

CONSULTANTS:

Project Manager
BRAY MOONEY CONSULTING
410 E. 21 STREET
CHESTER, PA 19013
Tel: (610) 872-3716

Architect
ARRAY HEALTHCARE
FACILITIES SOLUTIONS
2520 RENAISSANCE BLVD.,
SUITE 110
KING OF PRUSSIA, PA 19406
Tel: (610) 270-0599

Structural Engineer
WZG, STRUCTURAL
CONSULTING ENGINEERS
P.O. BOX 24
40 LITTLE ROAD
ZIEGLERVILLE, PA 19482
Tel: (610) 267-5194

MEP/FP Engineer
APOGEE CONSULTING
GROUP
7330 CHAPEL HILL ROAD,
SUITE 202
RALEIGH, NC 27606
Tel: (919) 659-7420

Civil Engineer
GUIDON DESIGN
2453 N DELAWARE STREET
INDIANAPOLIS, IN 46205
Tel: (317) 600-6388

Fire Protection Consultant
HARRINGTON GROUP
7508 E. INDEPENDENCE
BLVD., SUITE 116
CHARLOTTE, NC 28227
Tel: (704) 531-5077

Cost Estimator
BRAY MOONEY CONSULTING
410 E. 21 STREET
CHESTER, PA 19013
Tel: (610) 872-3716

Aquatic Consultant
ATLANTIC AQUATIC
ENGINEERING
1823 DEEP RUN ROAD
PIPERSVILLE, PA 18947
Tel: (215) 788-0409

Associate Architects
W. COOK ARCHITECTS
1251 ROMANVILLE ROAD
COATESVILLE, PA 19320
Tel: (610) 383-4460

Project Manager:
Bray Mooney Consulting

Project Number
3627

Scale
As indicated

Drawing Title
FIRST FLOOR LIFE SAFETY PLAN

Approved: Project Director

Project Title
RENOVATE BUILDING 69

Location
1400 Black Horse Hill, Coatesville, PA

Date
1/22/2014

Checked
TN

Drawn
BG

VA Project Number
542-CSI-203

Building Number
69

Drawing Number
G1003

Dwg. 04 of 86

Office of Facilities Management
Department of Veterans Affairs