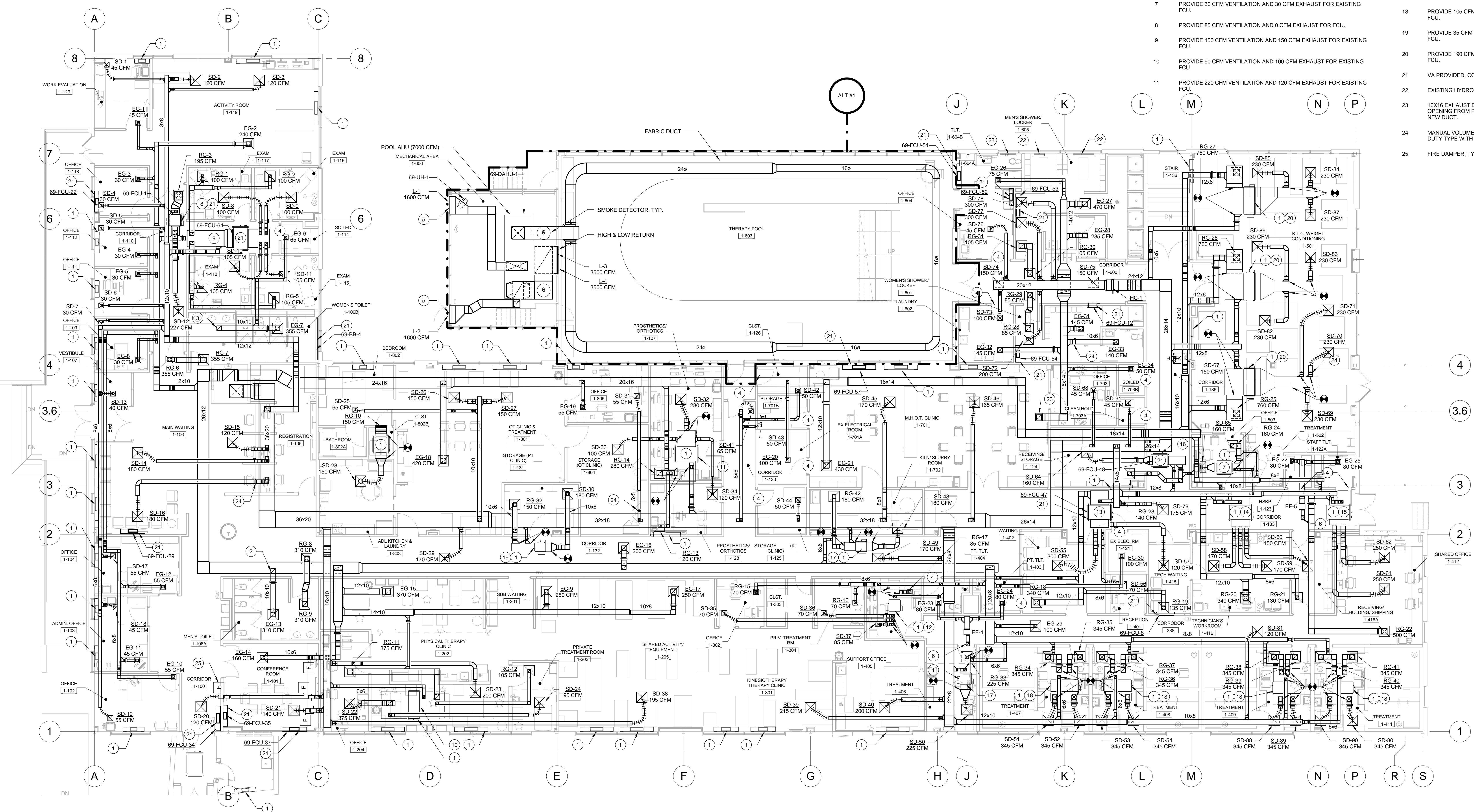



GENERAL NOTES		KEY	NOTE	KEY	NOTE
1.	ALL RUNS TO SUPPLY, RETURN, OR EXHAUST AIR TERMINALS SHALL BE THE SAME SIZE AS THE TERMINAL'S NECK SIZE UNLESS NOTED OTHERWISE.	1	EXISTING FAN COIL UNIT.	12	PROVIDE 85 CFM VENTILATION AND 85 CFM EXHAUST FOR EXISTING FCU.
2.	SEE 1-MP111 FOR THERMOSTATS LOCATION.	2	10X10 EXHAUST DUCT UP TO EF-2 ON ROOF. REUSE EXISTING ROOF OPENING FROM PREVIOUS SYSTEM. MODIFY AS NECESSARY TO FIT NEW DUCT.	13	PROVIDE 125 CFM VENTILATION AND 110 CFM EXHAUST FOR FCU.
		3	10X10 EXHAUST DUCT UP TO EF-3 ON ROOF.	14	PROVIDE 125 CFM VENTILATION AND 105 CFM EXHAUST FOR EXISTING FCU.
		4	DOOR UNDERCUT 3/4" FOR AIR TRANSFER INTO THE SPACE.	15	PROVIDE 100 CFM VENTILATION AND 100 CFM EXHAUST FOR EXISTING FCU.
		5	LOUVER TO MATCH ENCLOSURE'S PANEL SIZE. SEE ARCHITECTURAL ELEVATION FOR EXACT LOCATION. VERIFY WITH MECHANICAL ENGINEER IF LOUVER NEEDS TO BE SMALLER THAN SHOWN ON SCHEDULE BEFORE PURCHASING AND INSTALLING.	16	PROVIDE 65 CFM VENTILATION AND 45 CFM EXHAUST FOR EXISTING FCU.
		6	8x8 EXHAUST DUCT UP TO GOOSE NECK.	17	PROVIDE 50 CFM VENTILATION AND 50 CFM EXHAUST FOR EXISTING FCU.
		7	PROVIDE 30 CFM VENTILATION AND 30 CFM EXHAUST FOR EXISTING FCU.	18	PROVIDE 105 CFM VENTILATION AND 105 CFM EXHAUST FOR EXISTING FCU.
		8	PROVIDE 85 CFM VENTILATION AND 0 CFM EXHAUST FOR FCU.	19	PROVIDE 35 CFM VENTILATION AND 0 CFM EXHAUST FOR EXISTING FCU.
		9	PROVIDE 150 CFM VENTILATION AND 150 CFM EXHAUST FOR EXISTING FCU.	20	PROVIDE 190 CFM VENTILATION AND 260 CFM EXHAUST FOR EXISTING FCU.
		10	PROVIDE 90 CFM VENTILATION AND 100 CFM EXHAUST FOR EXISTING FCU.	21	VA PROVIDED, CONTRACTOR INSTALLED.
		11	PROVIDE 220 CFM VENTILATION AND 120 CFM EXHAUST FOR EXISTING FCU.	22	EXISTING HYDRONIC BASEBOARD.
				23	16X16 EXHAUST DUCT UP TO EF-1 ON ROOF. REUSE EXISTING ROOF OPENING FROM PREVIOUS SYSTEM. MODIFY AS NECESSARY TO FIT NEW DUCT.
				24	MANUAL VOLUME DAMPER (MVD) TYPICAL. DAMPER SHALL BE HEAVY DUTY TYPE WITH LOCKING QUADRANT.
				25	FIRE DAMPER, TYPICAL.



1-1st FLOOR HVAC PLAN
1/8" = 1'-0"

FULLY SPRINKLERED
ISSUED FOR BID

CONSULTANTS:										PROJECT MANAGER:		Project Number 3627		Scale 1/8" = 1'-0"		Drawing Title 1ST FLOOR HVAC PLAN		Project Title RENOVATE BUILDING 69		VA Project Number 542-CSI-203		Office of Facilities Management <div> Department of Veterans Affairs</div>	
Project Manager BRAY MOONEY CONSULTING		Architect ARRAY HEALTHCARE FACILITIES SOLUTIONS		Structural Engineer WZG, STRUCTURAL ENGINEERS		MEP/FP Engineer APOGEE CONSULTING GROUP		Civil Engineer GUIDON DESIGN		Fire Protection Consultant HARRINGTON GROUP		Cost Estimator BRAY MOONEY CONSULTING		Aquatic Consultant ATLANTIC AQUATIC ENGINEERING		Associate Architects W. COOK ARCHITECTS		Building Number 69					
410 E. 21 STREET CHESTER, PA 19013 Tel: (610) 872-3716		2520 RENAISSANCE BLVD., SUITE 110 KING OF PRUSSIA, PA 19406 Tel: (610) 270-0599		P.O. BOX 24 40 LITTLE ROAD ZIEGLERVILLE, PA 19482 Tel: (610) 287-5194		7330 CHAPEL HILL ROAD, SUITE 202 INDIANAPOLIS, IN 46205 Tel: (317) 800-6388		2453 N DELAWARE STREET INDIANAPOLIS, IN 46205 Tel: (317) 800-6388		7508 E. INDEPENDENCE BLVD., SUITE 116 CHARLOTTE, NC 28277 Tel: (704) 531-9077		410 E. 21 STREET CHESTER, PA 19013 Tel: (610) 872-3716		1823 DEEP RUN ROAD PIPPERSVILLE, PA 18947 Tel: (215) 788-0409		1251 ROMANSVILLE ROAD COATESVILLE, PA 19320 Tel: (610) 383-4460		Drawing Number MH111					
Revisions		Date																Dwg. 44 of 86					