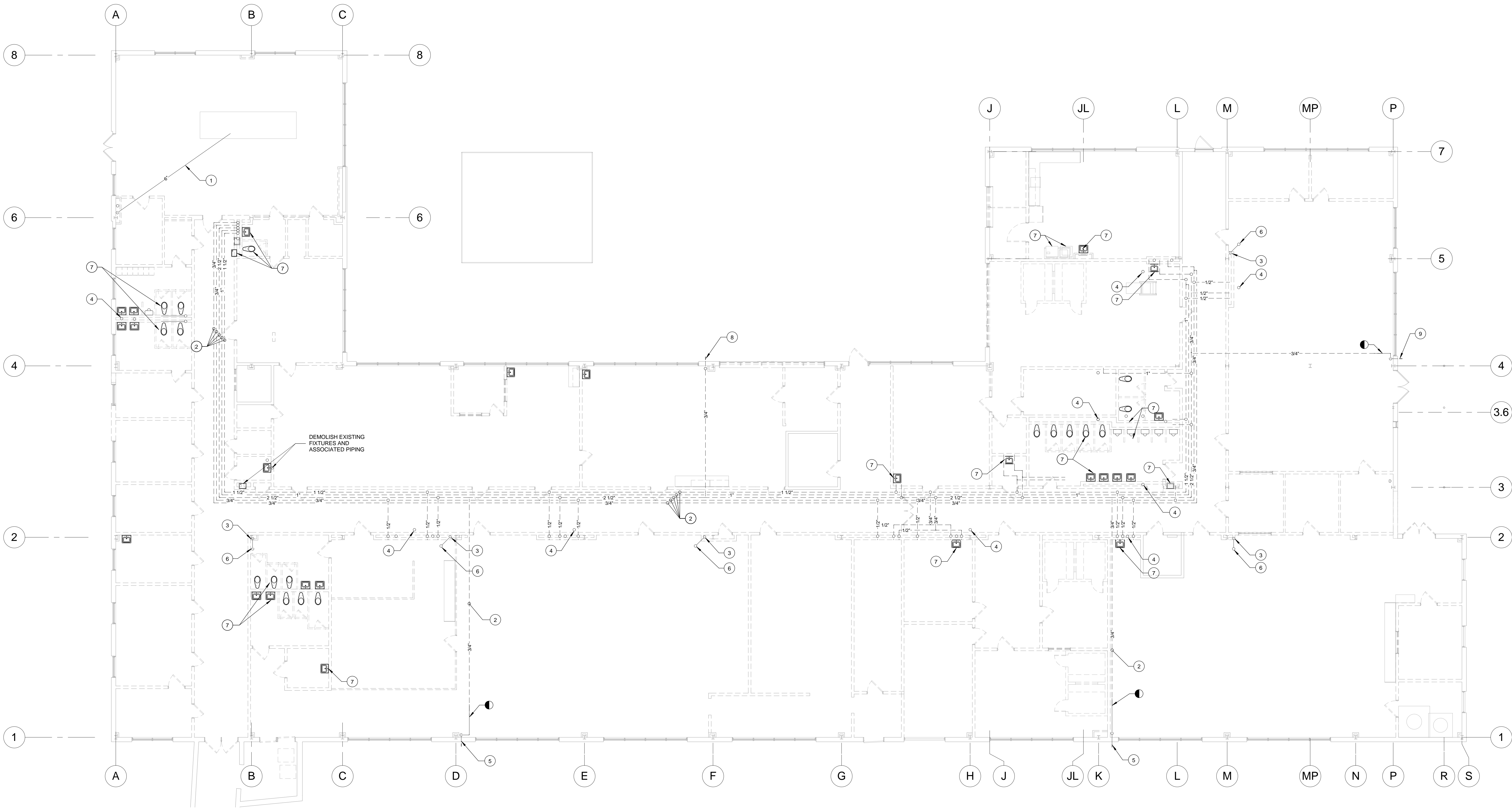


KEY	NOTE
1	EXISTING PIPING TO REMAIN UNDISTURBED.
2	EXISTING PIPING TO BE DEMOLISHED.
3	EXISTING STORM DRAIN RISERS TO REMAIN UNDISTURBED.
4	EXISTING VENT THROUGH ROOF (V.T.R.).
5	EXISTING HOSE BIBB TO REMAIN.
6	EXISTING STORM DRAIN PIPE UP TO ROOF DRAIN.
7	EXISTING PLUMBING FIXTURE TO BE DEMOLISHED, ASSOCIATED PIPING TO BE REMOVE AS MUCH AS FEASIBLE.
8	EXISTING HOSE BIBB TO BE RELOCATED.
9	EXISTING HOSE BIBB TO REMAIN UNLESS ALT#6 IS ACCEPTED. IN SUCH CASE THE HOSE BIBB SHALL BE RELOCATED NEARBY.



1 1ST FLOOR PLUMBING DEMOLITION PLAN - ABOVE CEILING
1/8" = 1'-0"

FULLY SPRINKLERED
ISSUED FOR BID

<div>CONSULTANTS:</div> <table><tr><td><div>Project Manager</div><div>BRAY MOONEY CONSULTING</div><div>410 E. 21 STREET CHESTER, PA, 19013 Tel: (610) 872-3716</div></td><td><div>Architect</div><div>ARRAY HEALTHCARE FACILITIES SOLUTIONS</div><div>2520 RENAISSANCE BLVD., SUITE 110 KING OF PRUSSIA, PA, 19406 Tel: (610) 270-0599</div></td><td><div>Structural Engineer</div><div>WZG, STRUCTURAL CONSULTING ENGINEERS</div><div>P.O. BOX 24 40 LITTLE ROAD ZIEGLERVILLE, NC, 27092 Tel: (919) 659-7420</div></td><td><div>MEP/FP Engineer</div><div>APOGEE CONSULTING GROUP</div><div>7330 CHAPEL HILL ROAD, SUITE 202 RALEIGH, NC, 27606 Tel: (919) 859-7420</div></td><td><div>Civil Engineer</div><div>GUIDON DESIGN</div><div>2453 N DELAWARE STREET INDIANAPOLIS, IN 46205 Tel: (317) 600-6388</div></td><td><div>Fire Protection Consultant</div><div>HARRINGTON GROUP</div><div>7508 E. INDEPENDENCE BLVD., SUITE 116 CHARLOTTE, NC, 28227 Tel: (704) 531-6077</div></td><td><div>Cost Estimator</div><div>BRAY MOONEY CONSULTING</div><div>410 E. 21 STREET CHESTER, PA, 19013 Tel: (610) 872-3716</div></td><td><div>Aquatic Consultant</div><div>ATLANTIC AQUATIC ENGINEERING</div><div>1823 DEEP RUN ROAD PIPERSVILLE, PA, 18947 Tel: (215) 786-0409</div></td><td><div>Associate Architects</div><div>W. COOK ARCHITECTS</div><div>1251 ROMANSVILLE ROAD COATESVILLE, PA, 19320 Tel: (610) 383-4460</div></td><td></td></tr><tr><td colspan="2">Revisions</td><td colspan="2">Date</td><td colspan="6"></td></tr></table>										<div>Project Manager</div> <div>BRAY MOONEY CONSULTING</div> <div>410 E. 21 STREET CHESTER, PA, 19013 Tel: (610) 872-3716</div>	<div>Architect</div> <div>ARRAY HEALTHCARE FACILITIES SOLUTIONS</div> <div>2520 RENAISSANCE BLVD., SUITE 110 KING OF PRUSSIA, PA, 19406 Tel: (610) 270-0599</div>	<div>Structural Engineer</div> <div>WZG, STRUCTURAL CONSULTING ENGINEERS</div> <div>P.O. BOX 24 40 LITTLE ROAD ZIEGLERVILLE, NC, 27092 Tel: (919) 659-7420</div>	<div>MEP/FP Engineer</div> <div>APOGEE CONSULTING GROUP</div> <div>7330 CHAPEL HILL ROAD, SUITE 202 RALEIGH, NC, 27606 Tel: (919) 859-7420</div>	<div>Civil Engineer</div> <div>GUIDON DESIGN</div> <div>2453 N DELAWARE STREET INDIANAPOLIS, IN 46205 Tel: (317) 600-6388</div>	<div>Fire Protection Consultant</div> <div>HARRINGTON GROUP</div> <div>7508 E. INDEPENDENCE BLVD., SUITE 116 CHARLOTTE, NC, 28227 Tel: (704) 531-6077</div>	<div>Cost Estimator</div> <div>BRAY MOONEY CONSULTING</div> <div>410 E. 21 STREET CHESTER, PA, 19013 Tel: (610) 872-3716</div>	<div>Aquatic Consultant</div> <div>ATLANTIC AQUATIC ENGINEERING</div> <div>1823 DEEP RUN ROAD PIPERSVILLE, PA, 18947 Tel: (215) 786-0409</div>	<div>Associate Architects</div> <div>W. COOK ARCHITECTS</div> <div>1251 ROMANSVILLE ROAD COATESVILLE, PA, 19320 Tel: (610) 383-4460</div>		Revisions		Date								<div>PROJECT MANAGER:</div> <table><tr><td>Project Number</td><td>3627</td></tr><tr><td>Scale</td><td>1/8" = 1'-0"</td></tr></table> <div>Bray Mooney Consulting</div>		Project Number	3627	Scale	1/8" = 1'-0"	<table><tr><td>Drawing Title</td><td>1ST FLOOR PLUMBING DEMOLITION PLAN - ABOVE CEILING</td></tr><tr><td colspan="2">Approved: Project Director</td></tr></table>	Drawing Title	1ST FLOOR PLUMBING DEMOLITION PLAN - ABOVE CEILING	Approved: Project Director		<table><tr><td colspan="3">Project Title</td><td>RENOVATE BUILDING 69</td></tr><tr><td colspan="3">Location</td><td>1400 Black Horse Hill, Coatesville, PA</td></tr><tr><td>Date</td><td>1/22/2014</td><td>Checked</td><td>DJR</td></tr><tr><td></td><td></td><td>Drawn</td><td>ORD</td></tr></table>	Project Title			RENOVATE BUILDING 69	Location			1400 Black Horse Hill, Coatesville, PA	Date	1/22/2014	Checked	DJR			Drawn	ORD	<table><tr><td>VA Project Number</td><td>542-CSI-203</td></tr><tr><td>Building Number</td><td>69</td></tr><tr><td>Drawing Number</td><td>PD112</td></tr><tr><td>Dwg. 57</td><td>of 86</td></tr></table>	VA Project Number	542-CSI-203	Building Number	69	Drawing Number	PD112	Dwg. 57	of 86	<div>Office of Facilities Management</div> <div>Department of Veterans Affairs</div>
<div>Project Manager</div> <div>BRAY MOONEY CONSULTING</div> <div>410 E. 21 STREET CHESTER, PA, 19013 Tel: (610) 872-3716</div>	<div>Architect</div> <div>ARRAY HEALTHCARE FACILITIES SOLUTIONS</div> <div>2520 RENAISSANCE BLVD., SUITE 110 KING OF PRUSSIA, PA, 19406 Tel: (610) 270-0599</div>	<div>Structural Engineer</div> <div>WZG, STRUCTURAL CONSULTING ENGINEERS</div> <div>P.O. BOX 24 40 LITTLE ROAD ZIEGLERVILLE, NC, 27092 Tel: (919) 659-7420</div>	<div>MEP/FP Engineer</div> <div>APOGEE CONSULTING GROUP</div> <div>7330 CHAPEL HILL ROAD, SUITE 202 RALEIGH, NC, 27606 Tel: (919) 859-7420</div>	<div>Civil Engineer</div> <div>GUIDON DESIGN</div> <div>2453 N DELAWARE STREET INDIANAPOLIS, IN 46205 Tel: (317) 600-6388</div>	<div>Fire Protection Consultant</div> <div>HARRINGTON GROUP</div> <div>7508 E. INDEPENDENCE BLVD., SUITE 116 CHARLOTTE, NC, 28227 Tel: (704) 531-6077</div>	<div>Cost Estimator</div> <div>BRAY MOONEY CONSULTING</div> <div>410 E. 21 STREET CHESTER, PA, 19013 Tel: (610) 872-3716</div>	<div>Aquatic Consultant</div> <div>ATLANTIC AQUATIC ENGINEERING</div> <div>1823 DEEP RUN ROAD PIPERSVILLE, PA, 18947 Tel: (215) 786-0409</div>	<div>Associate Architects</div> <div>W. COOK ARCHITECTS</div> <div>1251 ROMANSVILLE ROAD COATESVILLE, PA, 19320 Tel: (610) 383-4460</div>																																																											
Revisions		Date																																																																	
Project Number	3627																																																																		
Scale	1/8" = 1'-0"																																																																		
Drawing Title	1ST FLOOR PLUMBING DEMOLITION PLAN - ABOVE CEILING																																																																		
Approved: Project Director																																																																			
Project Title			RENOVATE BUILDING 69																																																																
Location			1400 Black Horse Hill, Coatesville, PA																																																																
Date	1/22/2014	Checked	DJR																																																																
		Drawn	ORD																																																																
VA Project Number	542-CSI-203																																																																		
Building Number	69																																																																		
Drawing Number	PD112																																																																		
Dwg. 57	of 86																																																																		