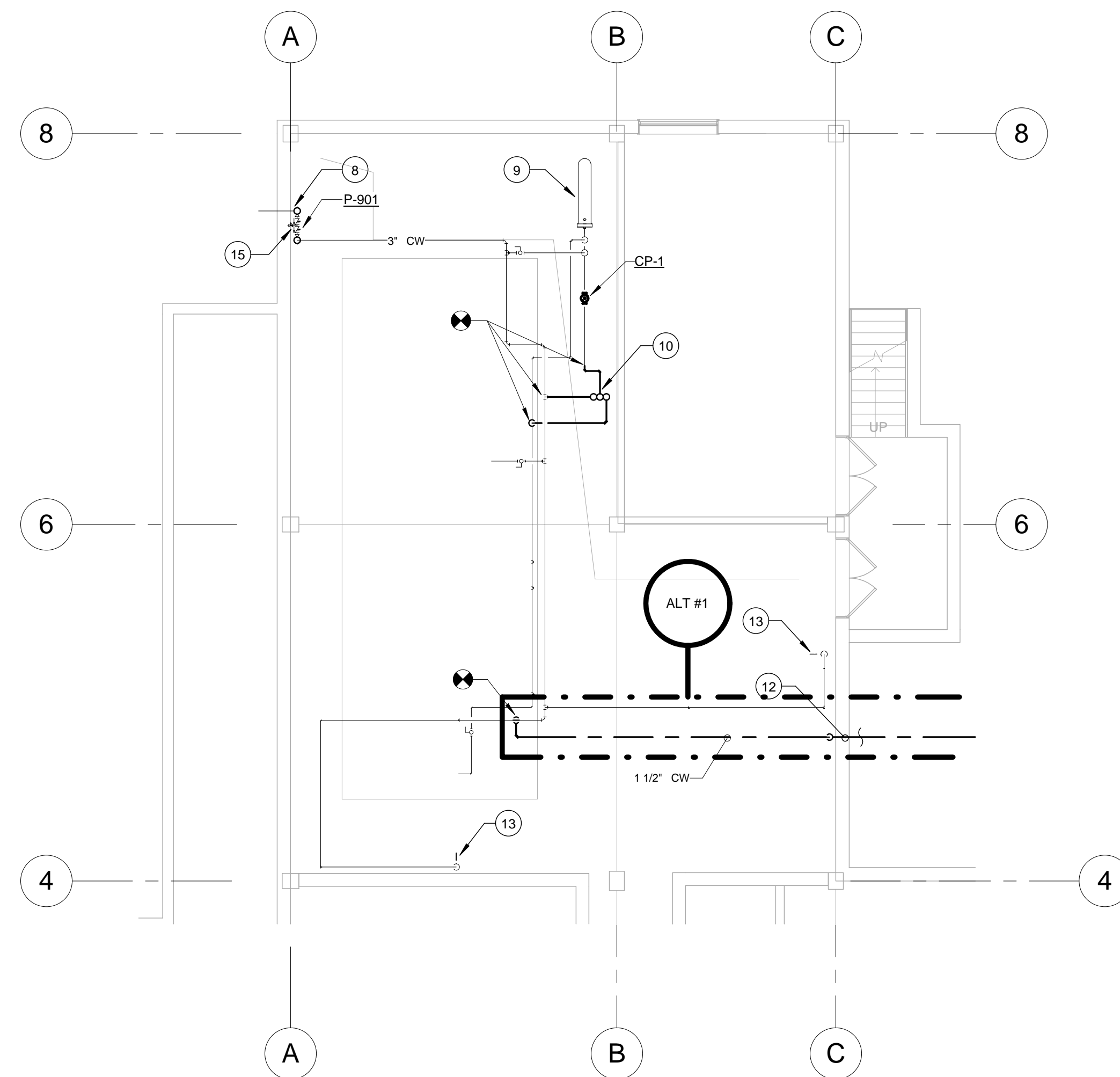


1 BASEMENT SANITARY PLAN
1/8" = 1'-0"



2 BASEMENT DOMESTIC WATER PLAN
1/8" = 1'-0"

KEY	NOTE
1	2" SANITARY PIPE UP TO LAVATORIES. SEE 1-PP111 FOR CONTINUATION.
2	EXISTING FLOOR DRAIN.
3	4" END OF LINE CLEANOUT.
4	EXISTING STORM DRAIN PIPE UP TO ROOF DRAIN.
5	PIPE LOCATED UNDER SLAB.
6	PIPE LOCATED BELOW 1ST FLOOR SLAB.
7	EXISTING SUMP.
8	EXISTING DOMESTIC WATER SERVICE ENTRANCE.
9	EXISTING DOMESTIC WATER HEAT EXCHANGER.
10	NEW LOCATION FOR DOMESTIC WATER RISER TO SERVE 1ST FLOOR. SEE 1-PP112 FOR CONTINUATION.
11	3" SANITARY PIPE UP TO FLOOR DRAIN. SEE 1-PP111 FOR CONTINUATION.
12	1 1/2" CW TO POOL ENCLOSURE. RUN PIPE IN SAME TRENCH USED FOR HYDRONIC PIPING. SEE 1-PP112 FOR CONTINUATION.
13	EXISTING HOSE BIBB.
14	NEW 3" SANITARY FROM BACKFLOW PREVENTER AIR GAP TO NEAREST FLOOR DRAIN.
15	NEW REDUCED PRESSURE BACKFLOW PREVENTER.

		<div>CONSULTANTS:</div> <table><tr><td>Project Manager</td><td>Architect</td><td>Structural Engineer</td><td>MER/PEP Engineer</td><td>Civil Engineer</td><td>Fire Protection Consultant</td><td>Cost Estimator</td><td>Acoustic Consultant</td><td>Associate Architects</td></tr><tr><td>BRAY MOONEY CONSULTING</td><td>ARRAY HEALTHCARE FACILITIES SOLUTIONS</td><td>WZG, STRUCTURAL CONSULTING ENGINEERS</td><td>APOGEE CONSULTING GROUP</td><td>GUIDON DESIGN</td><td>HARRINGTON GROUP</td><td>BRAY MOONEY CONSULTING</td><td>ATLANTIC AQUATIC ENGINEERING</td><td>W. COOK ARCHITECTS</td></tr><tr><td>410 E. 21 STREET CHESTER, PA, 19013 Tel: (610) 872-3716</td><td>2520 RENAISSANCE BLVD., SUITE 110 KING OF PRUSSIA, PA, 19406 Tel: (610) 270-0599</td><td>P.O. BOX 24 40 LITTLE ROAD ZIEGLERVILLE, PA, 19422 Tel: (610) 287-3194</td><td>7330 CHAPEL HILL ROAD, SUITE 202 RALEIGH, NC, 27606 Tel: (919) 858-7420</td><td>2453 N DELAWARE STREET INDIANAPOLIS, IN 46205 Tel: (317) 800-6386</td><td>7508 E. INDEPENDENCE BLVD., SUITE 116 CHARLOTTE, NC, 28277 Tel: (704) 531-9077</td><td>410 E. 21 STREET CHESTER, PA, 19013 Tel: (610) 872-3716</td><td>1823 DEEP RUN ROAD PIPPERSVILLE, PA, 1947 Tel: (215) 766-0495</td><td>1251 ROMANVILLE ROAD COATESVILLE, PA, 19320 Tel: (610) 383-4460</td></tr><tr><td>Revisions</td><td>Date</td><td colspan="7"></td></tr></table>								Project Manager	Architect	Structural Engineer	MER/PEP Engineer	Civil Engineer	Fire Protection Consultant	Cost Estimator	Acoustic Consultant	Associate Architects	BRAY MOONEY CONSULTING	ARRAY HEALTHCARE FACILITIES SOLUTIONS	WZG, STRUCTURAL CONSULTING ENGINEERS	APOGEE CONSULTING GROUP	GUIDON DESIGN	HARRINGTON GROUP	BRAY MOONEY CONSULTING	ATLANTIC AQUATIC ENGINEERING	W. COOK ARCHITECTS	410 E. 21 STREET CHESTER, PA, 19013 Tel: (610) 872-3716	2520 RENAISSANCE BLVD., SUITE 110 KING OF PRUSSIA, PA, 19406 Tel: (610) 270-0599	P.O. BOX 24 40 LITTLE ROAD ZIEGLERVILLE, PA, 19422 Tel: (610) 287-3194	7330 CHAPEL HILL ROAD, SUITE 202 RALEIGH, NC, 27606 Tel: (919) 858-7420	2453 N DELAWARE STREET INDIANAPOLIS, IN 46205 Tel: (317) 800-6386	7508 E. INDEPENDENCE BLVD., SUITE 116 CHARLOTTE, NC, 28277 Tel: (704) 531-9077	410 E. 21 STREET CHESTER, PA, 19013 Tel: (610) 872-3716	1823 DEEP RUN ROAD PIPPERSVILLE, PA, 1947 Tel: (215) 766-0495	1251 ROMANVILLE ROAD COATESVILLE, PA, 19320 Tel: (610) 383-4460	Revisions	Date								PROJECT MANAGER:		Project Number 3627	Scale 1/8" = 1'-0"	Drawing Title BASEMENT PLUMBING PLAN		Project Title RENOVATE BUILDING 69		VA Project Number 542-CSI-203		Office of Facilities Management	
Project Manager	Architect	Structural Engineer	MER/PEP Engineer	Civil Engineer	Fire Protection Consultant	Cost Estimator	Acoustic Consultant	Associate Architects																																																	
BRAY MOONEY CONSULTING	ARRAY HEALTHCARE FACILITIES SOLUTIONS	WZG, STRUCTURAL CONSULTING ENGINEERS	APOGEE CONSULTING GROUP	GUIDON DESIGN	HARRINGTON GROUP	BRAY MOONEY CONSULTING	ATLANTIC AQUATIC ENGINEERING	W. COOK ARCHITECTS																																																	
410 E. 21 STREET CHESTER, PA, 19013 Tel: (610) 872-3716	2520 RENAISSANCE BLVD., SUITE 110 KING OF PRUSSIA, PA, 19406 Tel: (610) 270-0599	P.O. BOX 24 40 LITTLE ROAD ZIEGLERVILLE, PA, 19422 Tel: (610) 287-3194	7330 CHAPEL HILL ROAD, SUITE 202 RALEIGH, NC, 27606 Tel: (919) 858-7420	2453 N DELAWARE STREET INDIANAPOLIS, IN 46205 Tel: (317) 800-6386	7508 E. INDEPENDENCE BLVD., SUITE 116 CHARLOTTE, NC, 28277 Tel: (704) 531-9077	410 E. 21 STREET CHESTER, PA, 19013 Tel: (610) 872-3716	1823 DEEP RUN ROAD PIPPERSVILLE, PA, 1947 Tel: (215) 766-0495	1251 ROMANVILLE ROAD COATESVILLE, PA, 19320 Tel: (610) 383-4460																																																	
Revisions	Date																																																								
		Approved: Project Director		Location 1400 Black Horse Hill, Coatesville, PA		Building Number 69		Drawing Number PP101		Dwg. 58 of 86																																															
						Date 1/22/2014		Checked DJR		Drawn ORD		 Department of Veterans Affairs																																													

FULLY SPRINKLERED
ISSUED FOR BID

Office of
Facilities
Management

 Department of
Veterans Affairs