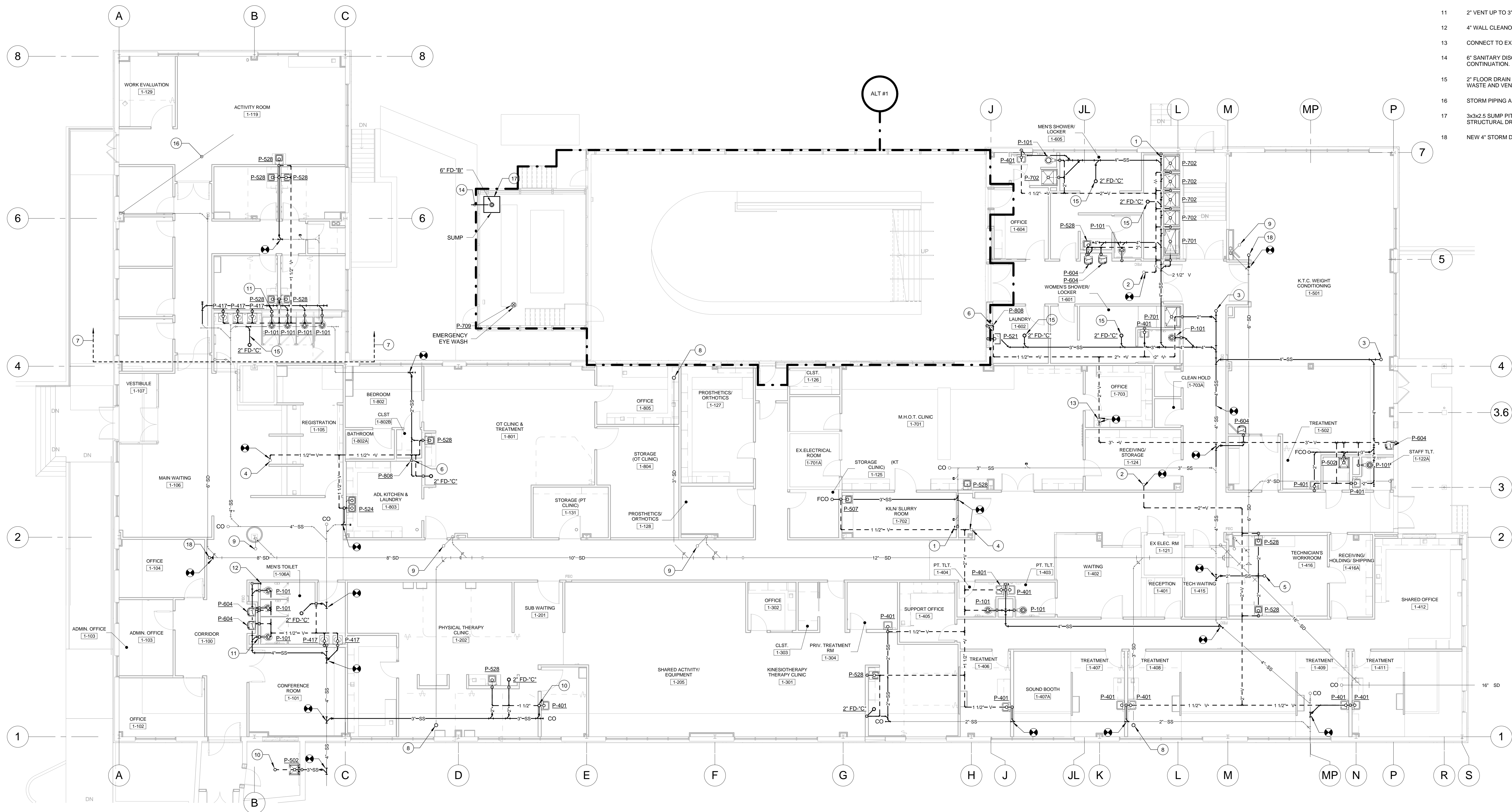


KEY	NOTE
1	3" WALL CLEANOUT.
2	CONNECT TO EXISTING 2 1/2" V.T.R.
3	4" FLOOR CLEANOUT.
4	CONNECT TO EXISTING 3" V.T.R.
5	2" FLOOR CLEANOUT.
6	WASHER BOX WITH 2" HUB DRAIN.
7	BEYOND THIS POINT REFER TO 1/PP101 BASEMENT PLUMBING DEMOLITION PLAN ABOVE CEILING, FOR FULL SCOPE OF NEW WORK UNDER 1ST FLOOR SLAB.
8	EXISTING FLOOR DRAIN IN TUNNEL.
9	EXISTING STORM DRAIN PIPE UP TO ROOF DRAIN.
10	1 1/2" VENT UP TO 3" VTR, OFFSET AS NECESSARY FOR THE PIPE TO PENETRATE THE ROOF AT LEAST 5' FROM THE EDGE OF THE BUILDING.
11	2" VENT UP TO 3" VTR.
12	4" WALL CLEANOUT.
13	CONNECT TO EXISTING 4" V.T.R.
14	6" SANITARY DISCHARGE FROM THE POOL SUMP. SEE CIVIL FOR CONTINUATION.
15	2" FLOOR DRAIN CONNECTING TO A 3" SS PIPE FOR COMBINATION WASTE AND VENT.
16	STORM PIPING ABOVE CEILING.
17	3x3x0.5 SUMP PIT WITH GRATE. SEE ARCHITECTURAL AND STRUCTURAL DRAWINGS.
18	NEW 4" STORM DRAIN FLOOR CLEANOUT.



1-1ST FLOOR SANITARY PLAN  
1/8" = 1'-0"

FULLY SPRINKLERED  
ISSUED FOR BID

CONSULTANTS:

**Project Manager**  
BRAY MOONEY CONSULTING

**Architect**  
ARRAY HEALTHCARE FACILITIES SOLUTIONS  
410 E. 21 STREET  
CHESTER, PA 19013  
Tel: (610) 872-3716

**Structural Engineer**  
WZG, STRUCTURAL ENGINEERS  
2520 RENAISSANCE BLVD., SUITE 110  
KING OF PRUSSIA, PA 19406  
Tel: (610) 270-0599

**MEP/FP Engineer**  
APOGEE CONSULTING GROUP  
7330 CHAPEL HILL ROAD, SUITE 202  
RALEIGH, NC 27606  
Tel: (919) 859-7420

**Civil Engineer**  
GUIDON DESIGN  
2453 N DELAWARE STREET  
INDIANAPOLIS, IN 46205  
Tel: (317) 800-6388

**Fire Protection Consultant**  
HARRINGTON GROUP  
7508 E. INDEPENDENCE BLVD., SUITE 116  
CHARLOTTE, NC 28227  
Tel: (704) 531-9077

**Cost Estimator**  
BRAY MOONEY CONSULTING  
410 E. 21 STREET  
CHESTER, PA 19013  
Tel: (610) 872-3716

**Aquatic Consultant**  
ATLANTIC AQUATIC ENGINEERING  
1823 DEEP RUN ROAD  
PIPERVILLE, PA 18047  
Tel: (215) 788-0409

**Associate Architects**  
W. COOK ARCHITECTS  
1251 ROMANSVILLE ROAD  
COATESVILLE, PA 19320  
Tel: (610) 383-4460

PROJECT MANAGER:

**Bray Mooney Consulting**

Project Number  
3627

Scale  
1/8" = 1'-0"

Drawing Title

1ST FLOOR SANITARY PLAN

Approved: Project Director

Project Title

RENOVATE BUILDING 69

Location

1400 Black Horse Hill, Coatesville, PA

Date

1/22/2014

Checked  
DJR

Drawn  
ORD

VA Project Number  
542-CSI-203

Building Number  
69

Drawing Number

PP111

Dwg. 59 of 86

Office of  
Facilities  
Management

Department of  
Veterans Affairs