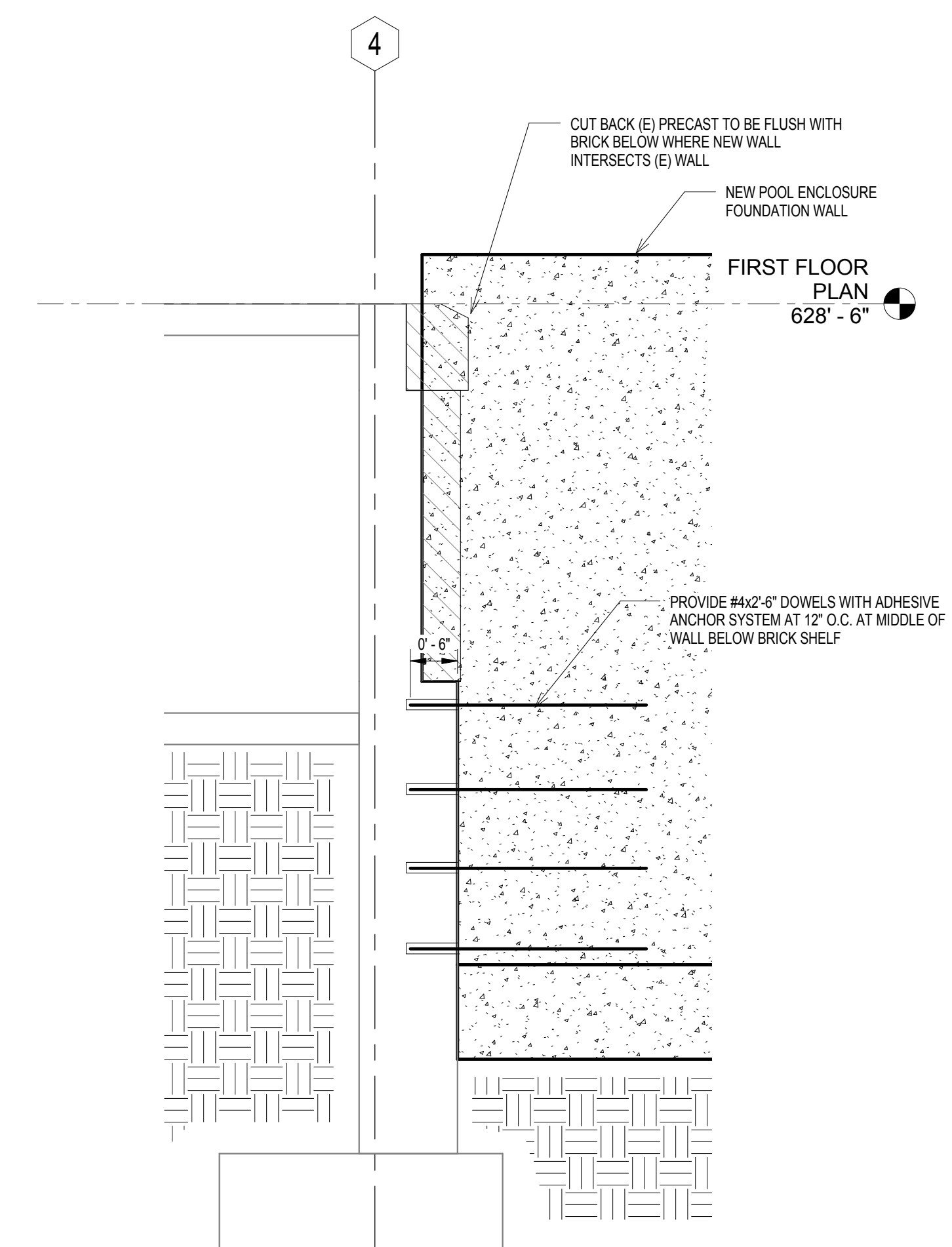
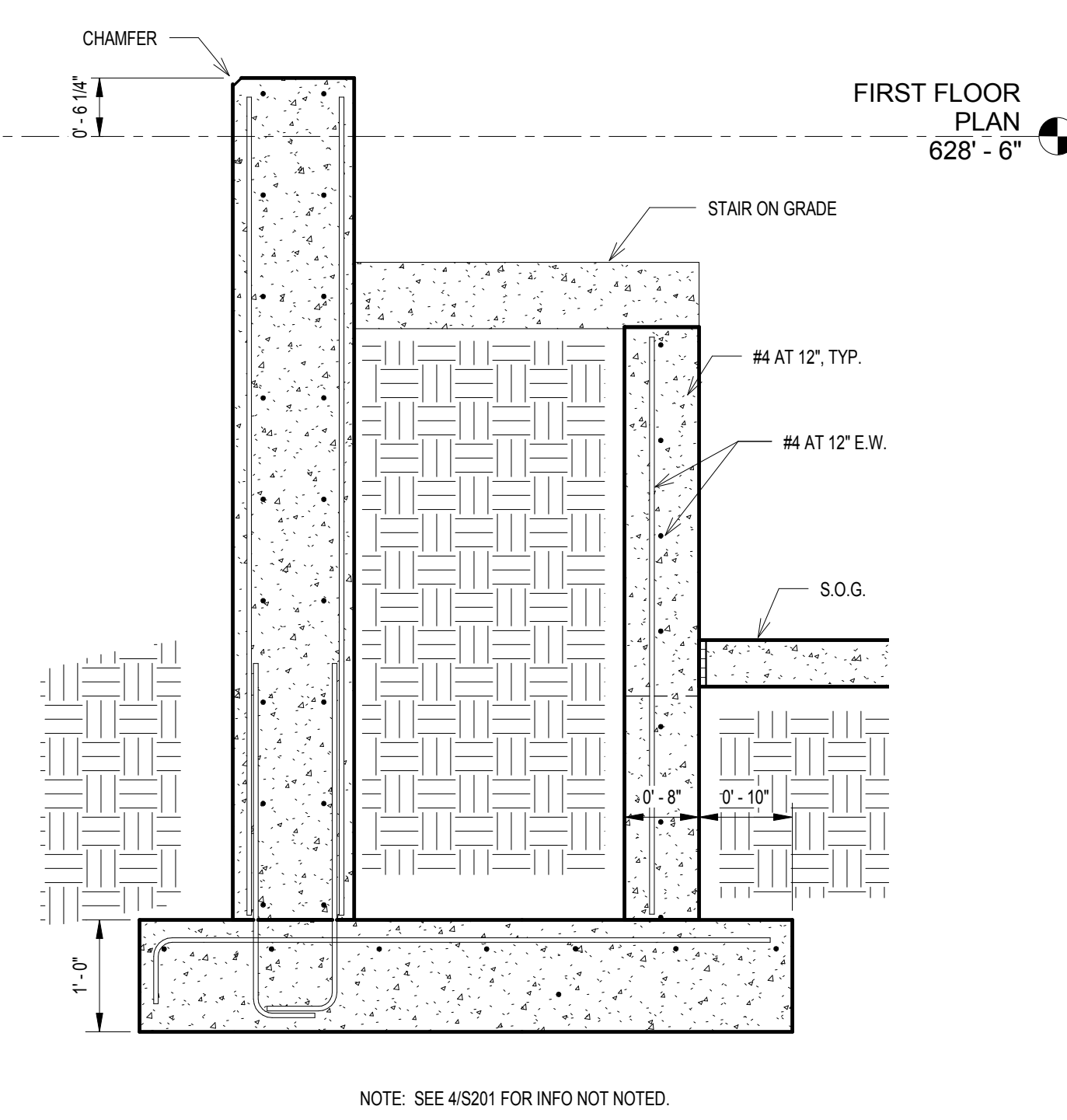


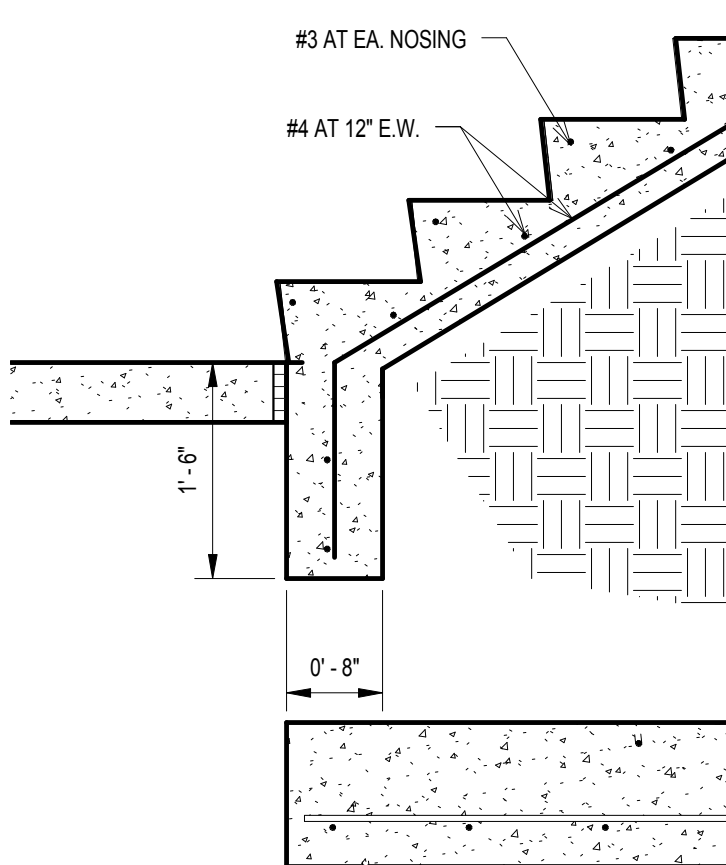
three inches = one foot
one and one half inches = one foot
one inch = one foot
three quarters inch = one foot
one half inch = one foot
three eighths inch = one foot
one quarter inch = one foot
one eighth inch = one foot



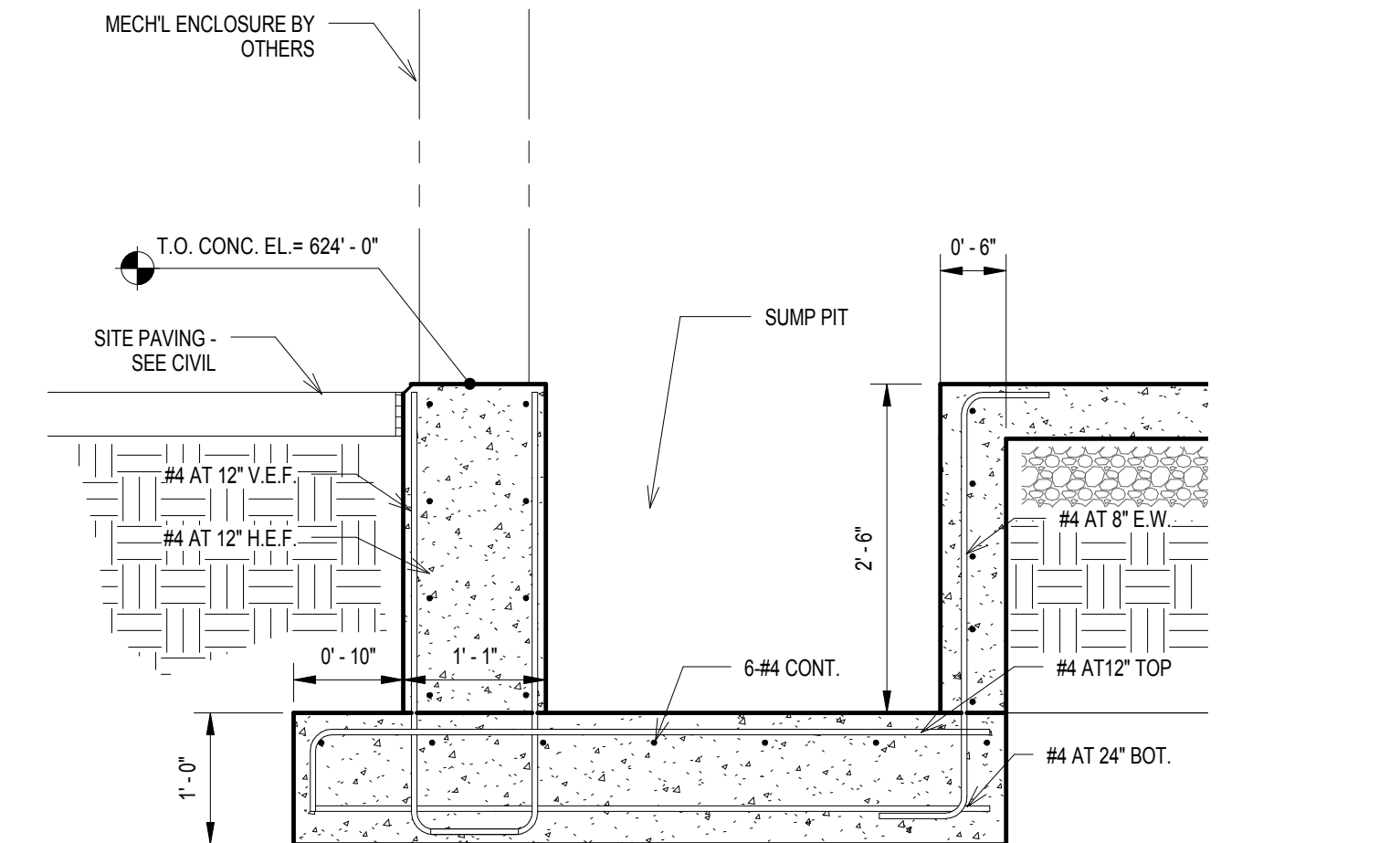
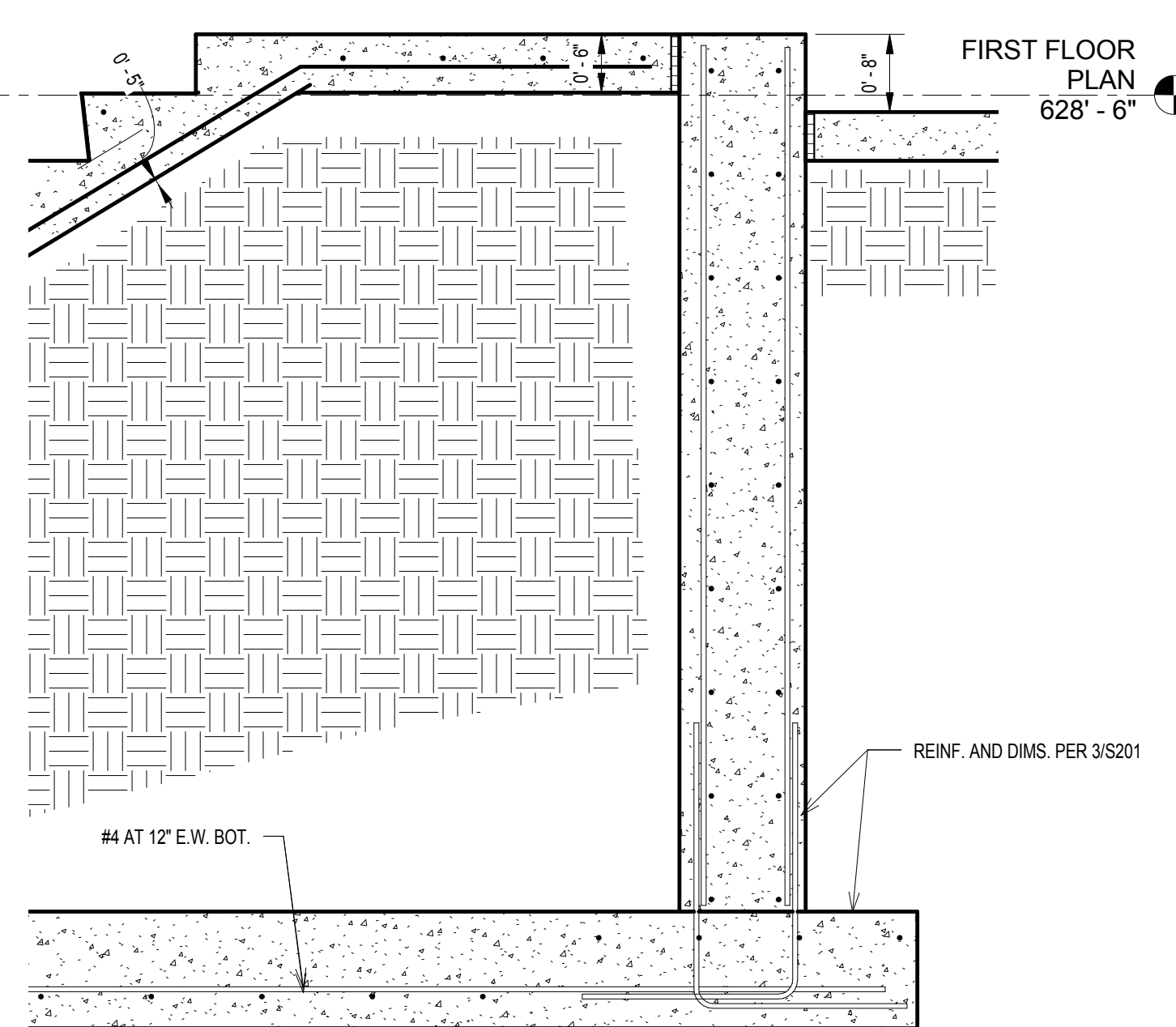
SECTION AT POOL ENCLOSURE
NEW/EXISTING WALL INTERFACE - ALT.
#1
3/4" = 1'-0"



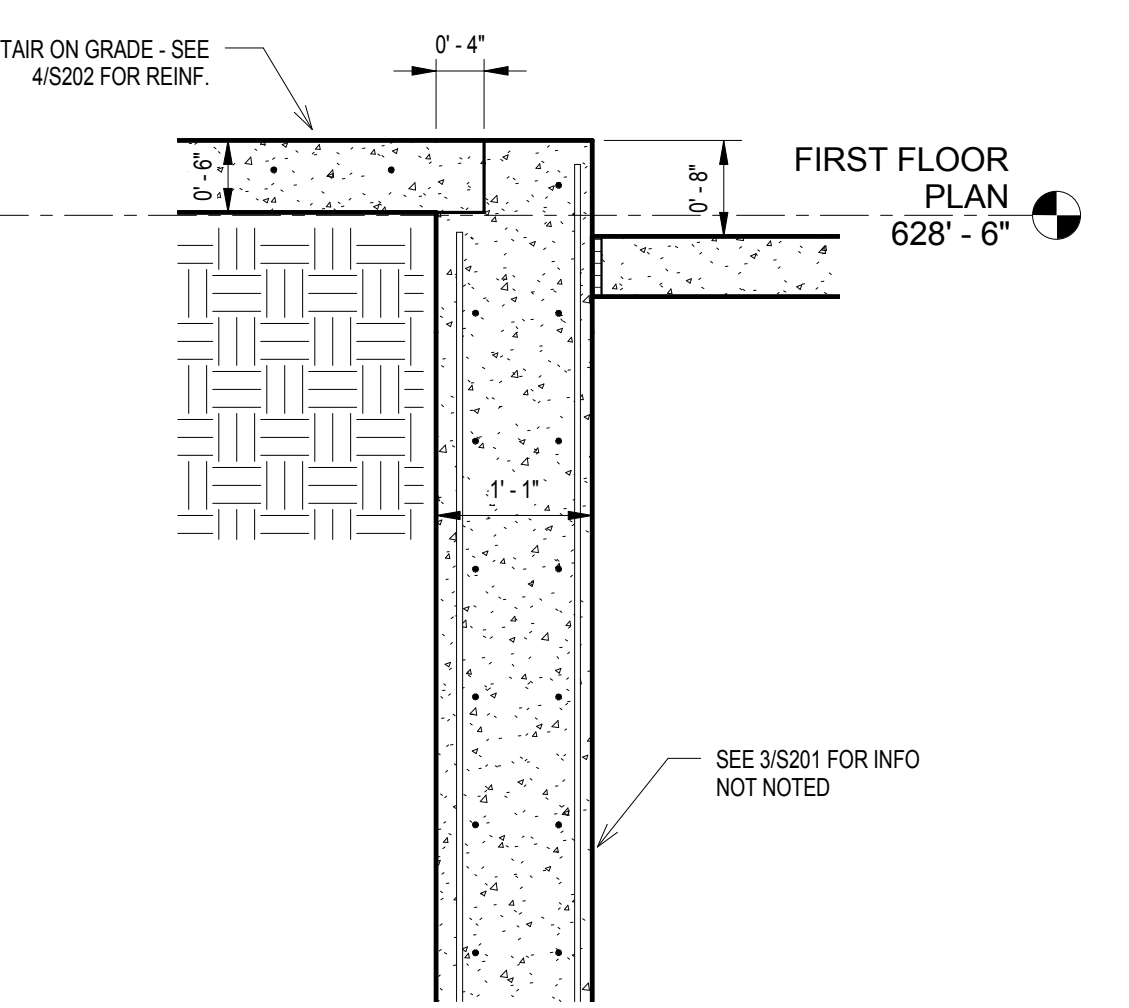
SECTION AT MECHANICAL STAIR - ALT.
#1
3/4" = 1'-0"



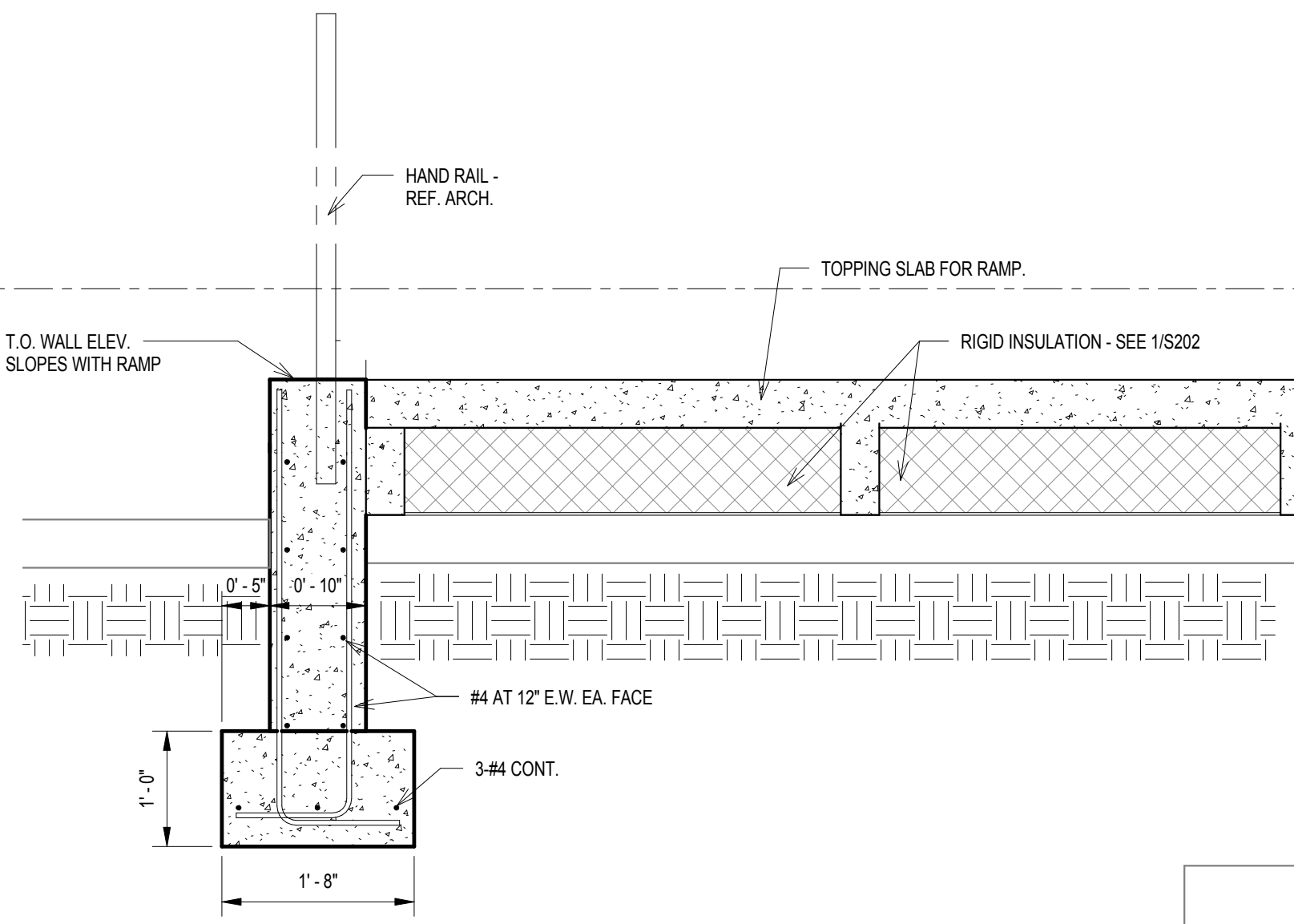
SECTION AT MECHANICAL STAIR - ALT.
#1
3/4" = 1'-0"



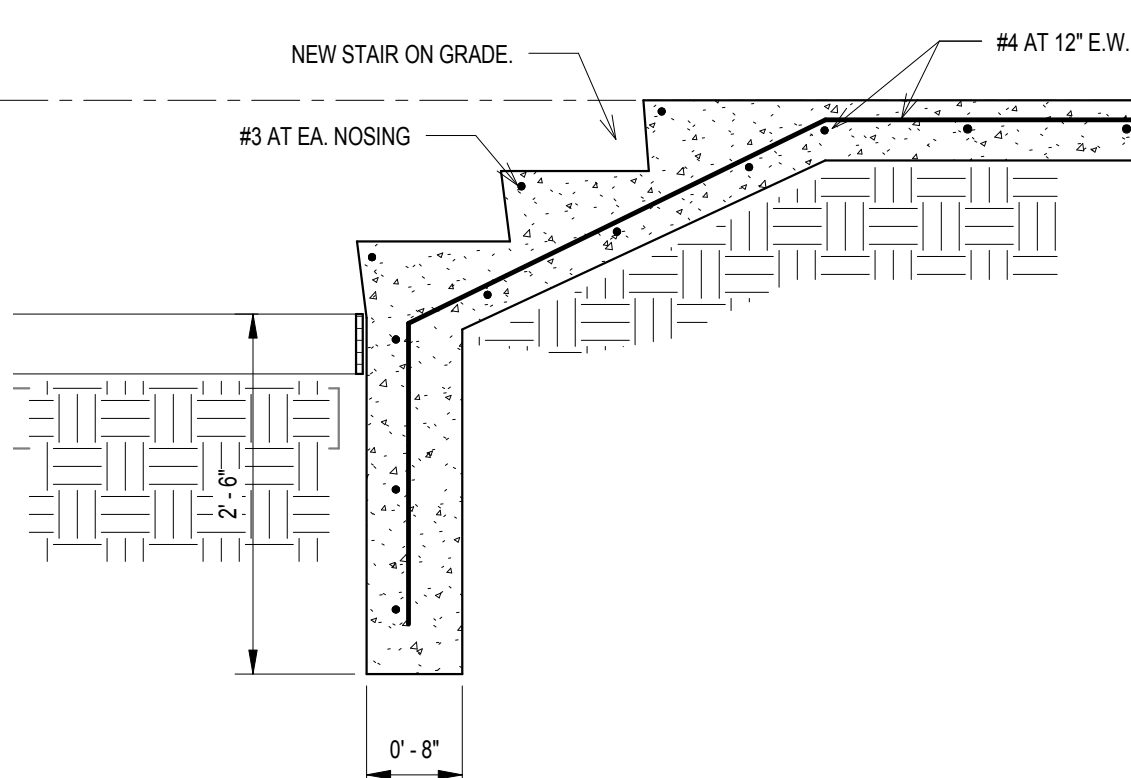
SECTION AT SUMP PIT - ALT. #1
3/4" = 1'-0"



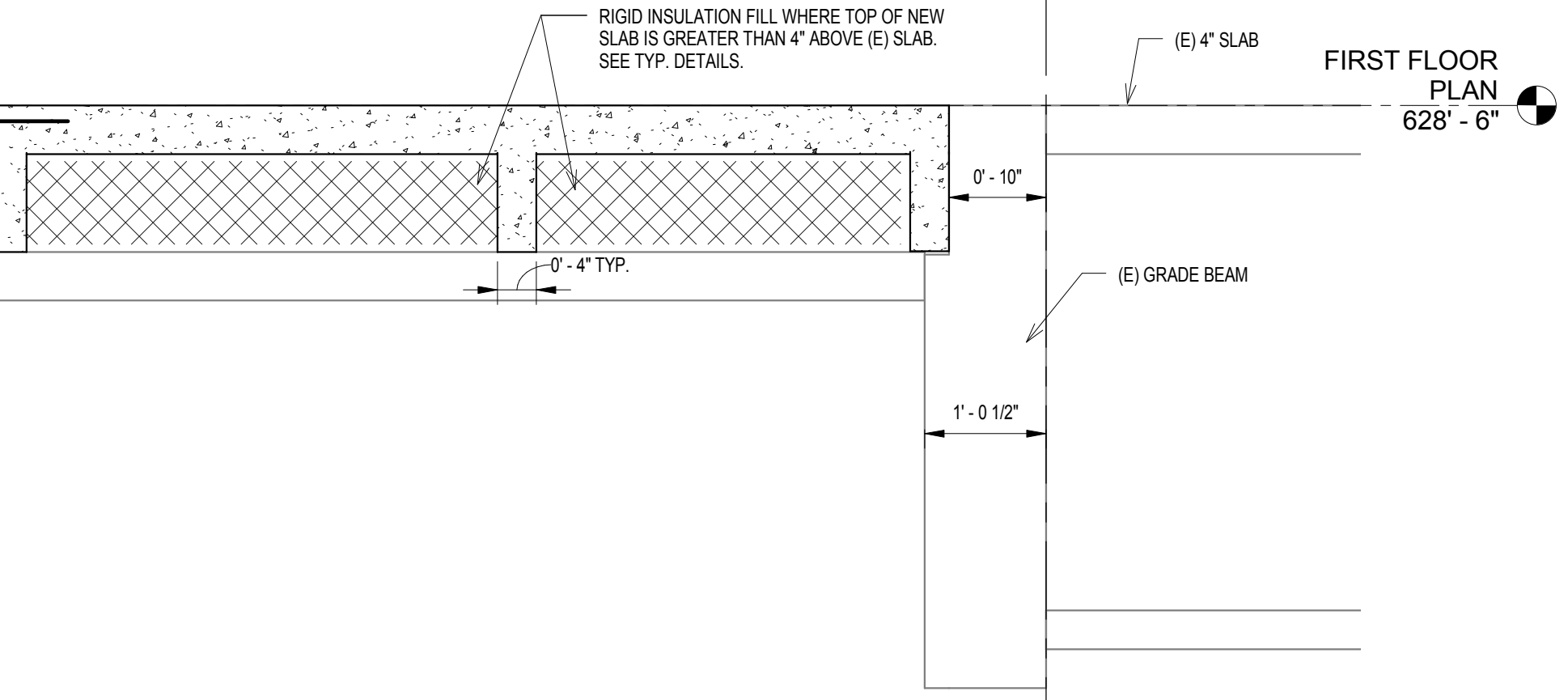
SECTION AT POOL EXIT STAIR - ALT. #1
3/4" = 1'-0"



SECTION AT WEST ENTRANCE RAMP
3/4" = 1'-0"



SECTION AT WEST ENTRANCE
3/4" = 1'-0"



FULLY SPRINKLERED
ISSUED FOR BID

CONSULTANTS:										PROJECT MANAGER:		Project Number 3619	Scale 3/4" = 1'-0"	Drawing Title DETAILS		Project Title BUILDING 69 PM & R RENOVATION		VA Project Number 542-CSI-203		Office of Facilities Management	
Project Manager BRAY MOONEY CONSULTING		Architect ARRAY HEALTHCARE FACILITIES SOLUTIONS		Structural Engineer WZG STRUCTURAL CONSULTING ENGINEERS		MEP/FP Engineer APOGEE CONSULTING GROUP		Civil Engineer GUIDON DESIGN		Fire Protection Consultant HARRINGTON GROUP		Cost Estimator BRAY MOONEY CONSULTING		Aquatic Consultant ATLANTIC AQUATIC ENGINEERING							
410 E. 21 STREET CHESTER, PA 19013 Tel (610) 872-3716		2520 RENAISSANCE BLVD., SUITE 110 KING OF PRUSSIA, PA 19406 Tel (610) 270-0599		P.O. BOX 24 40 LITTLE ROAD ZIEGLERVILLE, PA 19482 Tel (610) 287-3194		7330 CHAPEL HILL ROAD, SUITE 202 RALEIGH, NC 27606 Tel (919) 858-7420		2453 N DELAWARE STREET INDIANAPOLIS, IN 46205 Tel (317) 800-6386		7508 E. INDEPENDENCE BLVD., SUITE 116 CHARLOTTE, NC 28277 Tel (704) 531-9077		410 E. 21 STREET CHESTER, PA 19013 Tel (610) 872-3716		1823 DEEP RUN ROAD PIPERSVILLE, PA 18947 Tel (215) 766-0409							
Revisions		Date		Bray Mooney Consulting																	