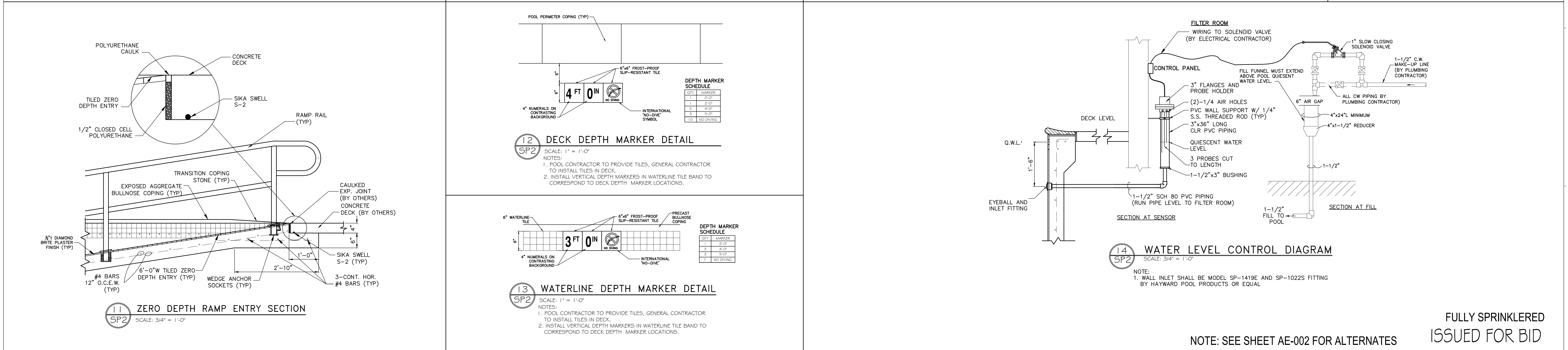
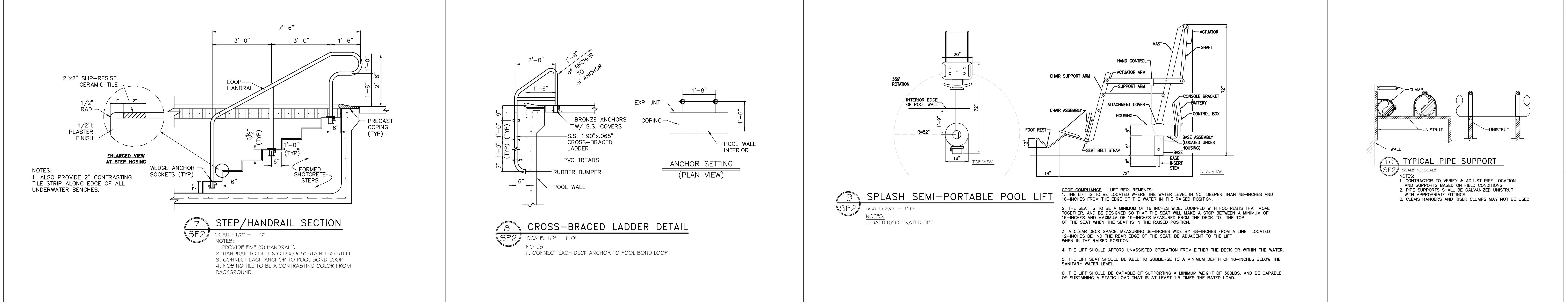
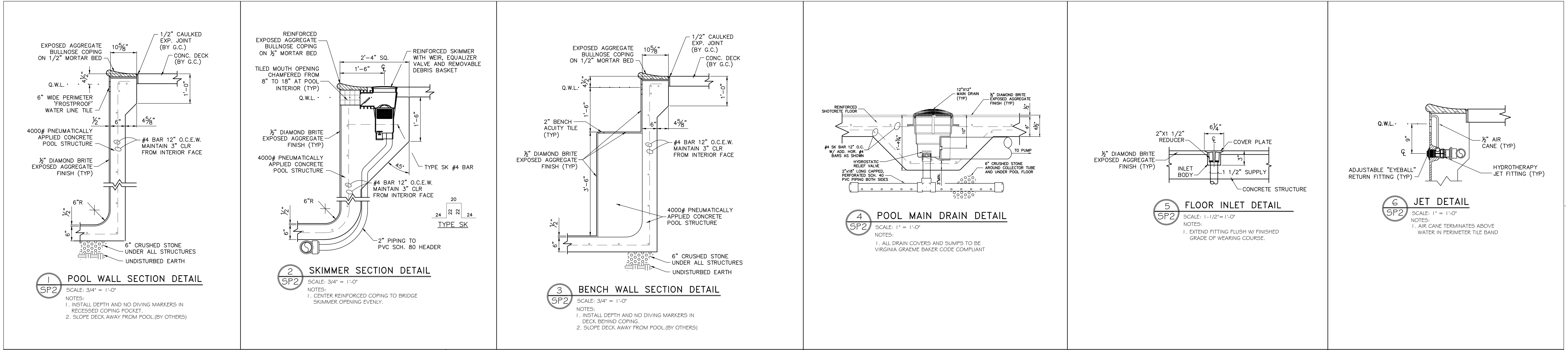


three inches = one foot
one and one half inches = one foot
one inch = one foot
three quarters inch = one foot
one half inch = one foot
three eighths inch = one foot
one quarter inch = one foot
one eighth inch = one foot
one sixteenth inch = one foot



CONSULTANTS:										PROJECT MANAGER:		Project Number	3627	Scale	As indicated	Drawing Title	POOL EQUIPMENT DETAILS ALT #1		Project Title	RENOVATE BUILDING 69		VA Project Number	542-CSI-203		Office of Facilities Management
Project Manager		Architect	Structural Engineer	MEP/FP Engineer	Civil Engineer	Fire Protection Consultant	Cost Estimator	Aquatic Consultant	<div>Bray Mooney Consulting</div>		Approved: Project Director		Location		1400 Black Horse Hill, Coatesville, PA		Building Number		69		Drawing Number				
BRAY MOONEY CONSULTING		ARRAY HEALTHCARE FACILITIES SOLUTIONS	ZG, STRUCTURAL CONSULTING ENGINEERS	APOGEE CONSULTING GROUP	GUIDON DESIGN	HARRINGTON GROUP	BRAY MOONEY CONSULTING	ATLANTIC AQUATIC ENGINEERING			Date		01/22/2014		Checked		JDB		Drawn		ML		SP2		
410 E. 21 STREET CHESTER, PA, 19013 Tel: (610) 872-3716		2520 RENAISSANCE BLVD., SUITE 110 KING OF PRUSSIA, PA, 19406 Tel: (610) 270-6599	180 W. RIDGE PIKE LIMERICK, PA, 19468 Tel: (214) 329-5559	7330 CHAPEL HILL ROAD, SUITE 202 RALEIGH, NC, 27606 Tel: (919) 858-7420	2453 N DELAWARE STREET INDIANAPOLIS, IN 46205 Tel: (317) 800-6388	7508 E. INDEPENDENCE BLVD., SUITE 116 CHARLOTTE, NC, 28277 Tel: (704) 531-9077	410 E. 21 STREET CHESTER, PA, 19013 Tel: (610) 872-3716	1823 DEEP RUN ROAD PIPERSVILLE, PA, 18947 Tel: (215) 766-0409			Revisions		Date		Dwg.		of		SP2		Dwg.		of		