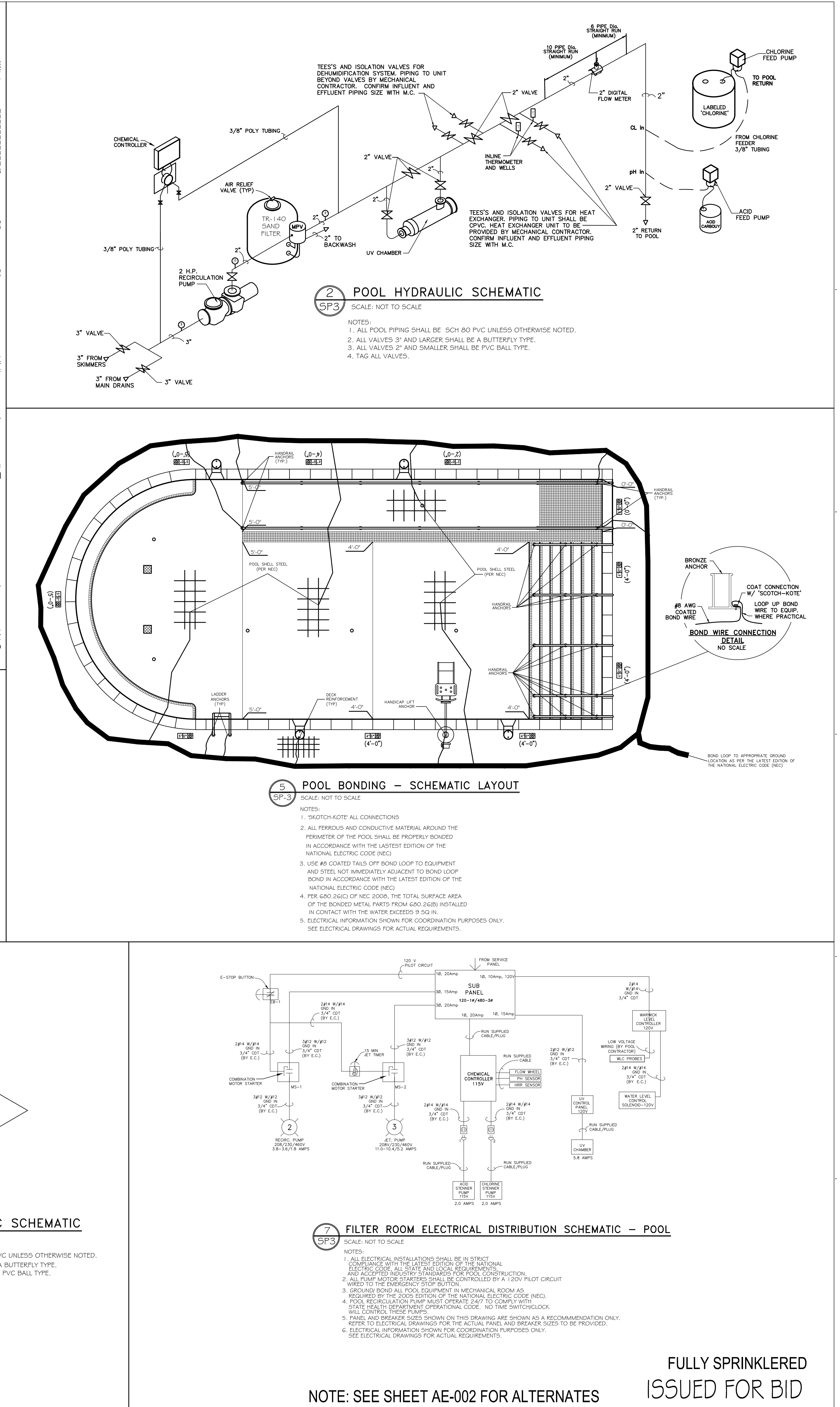
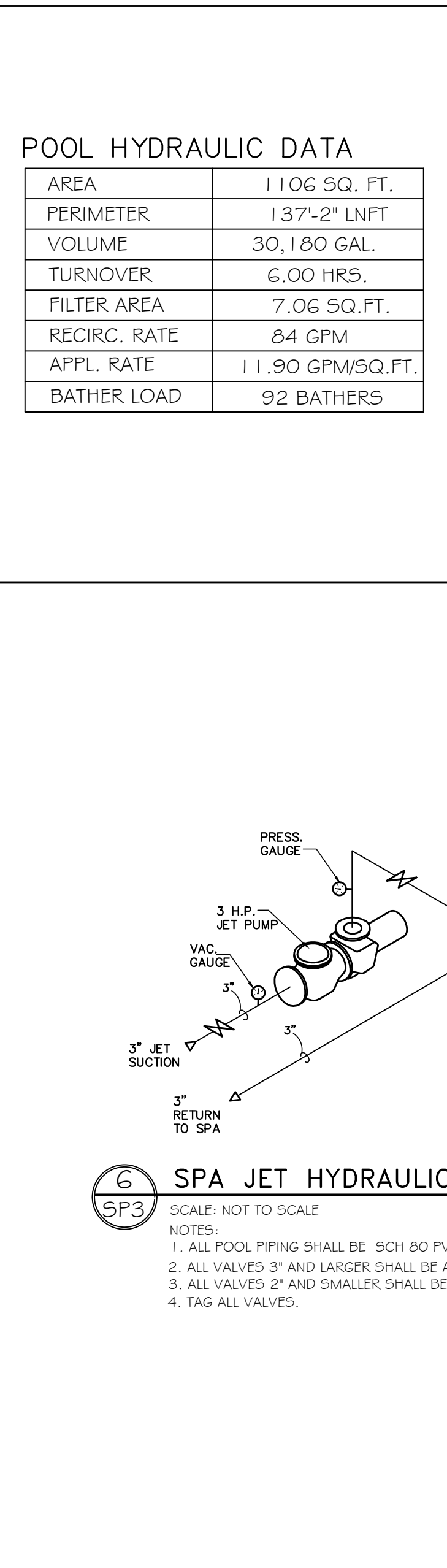
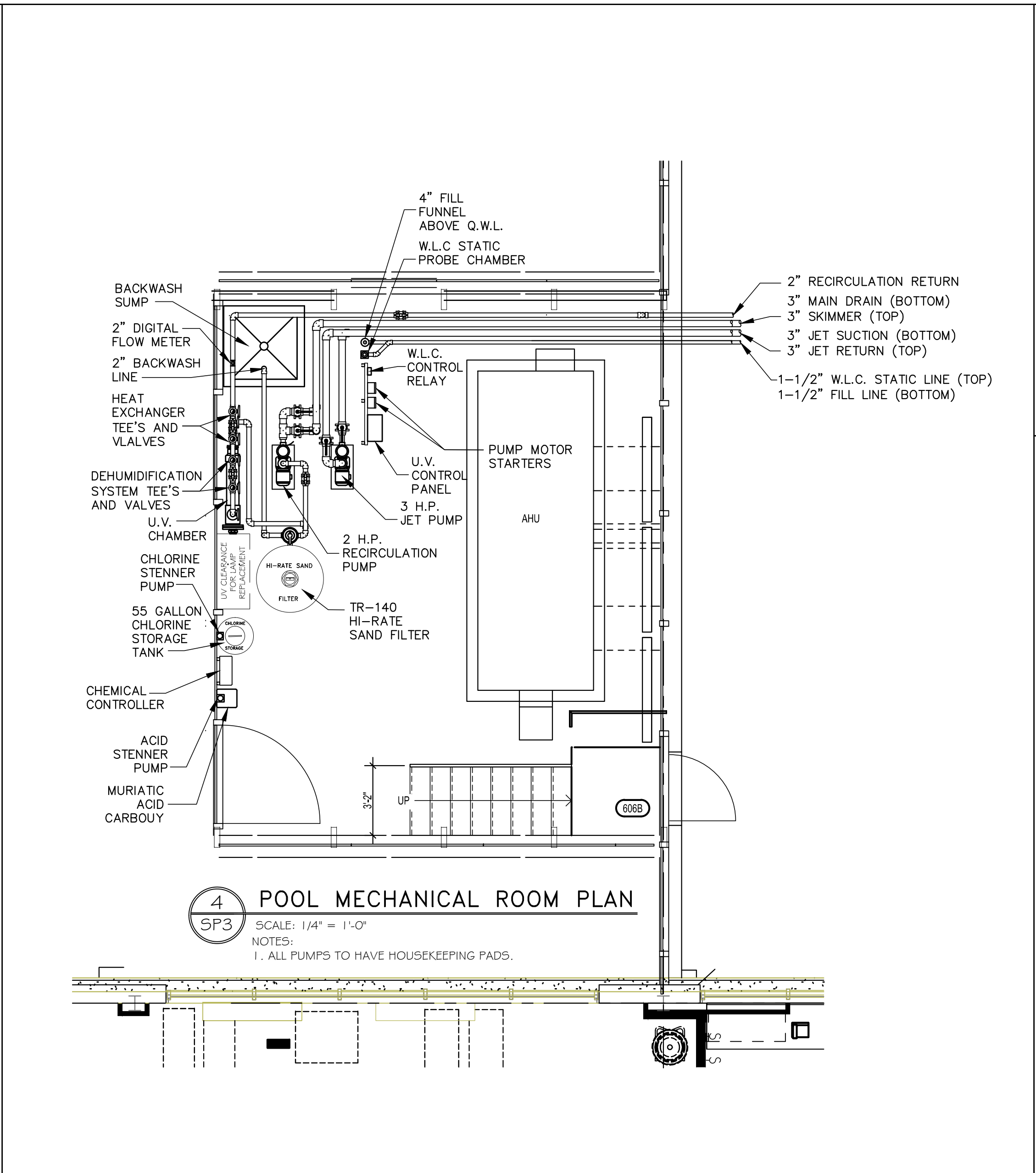
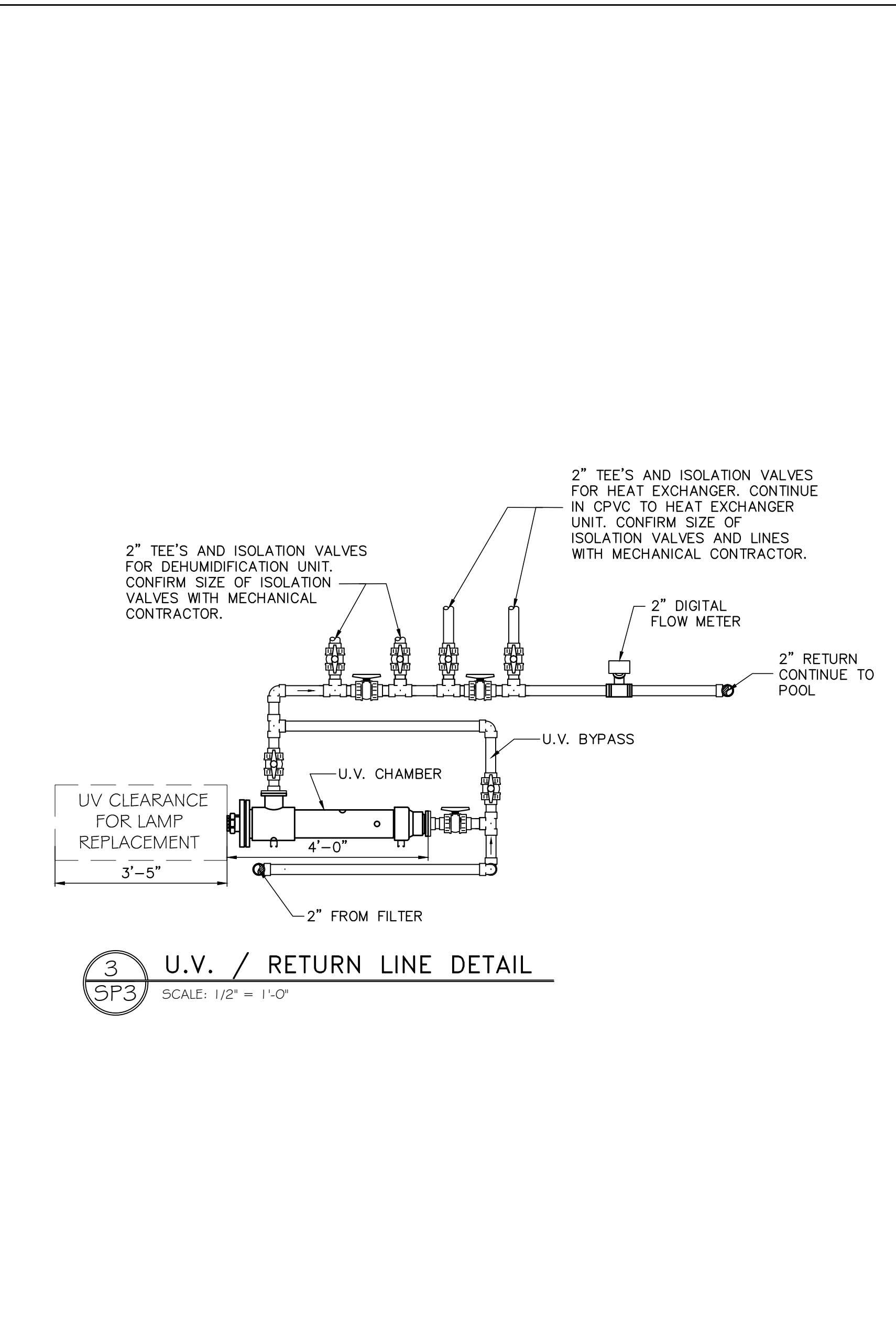
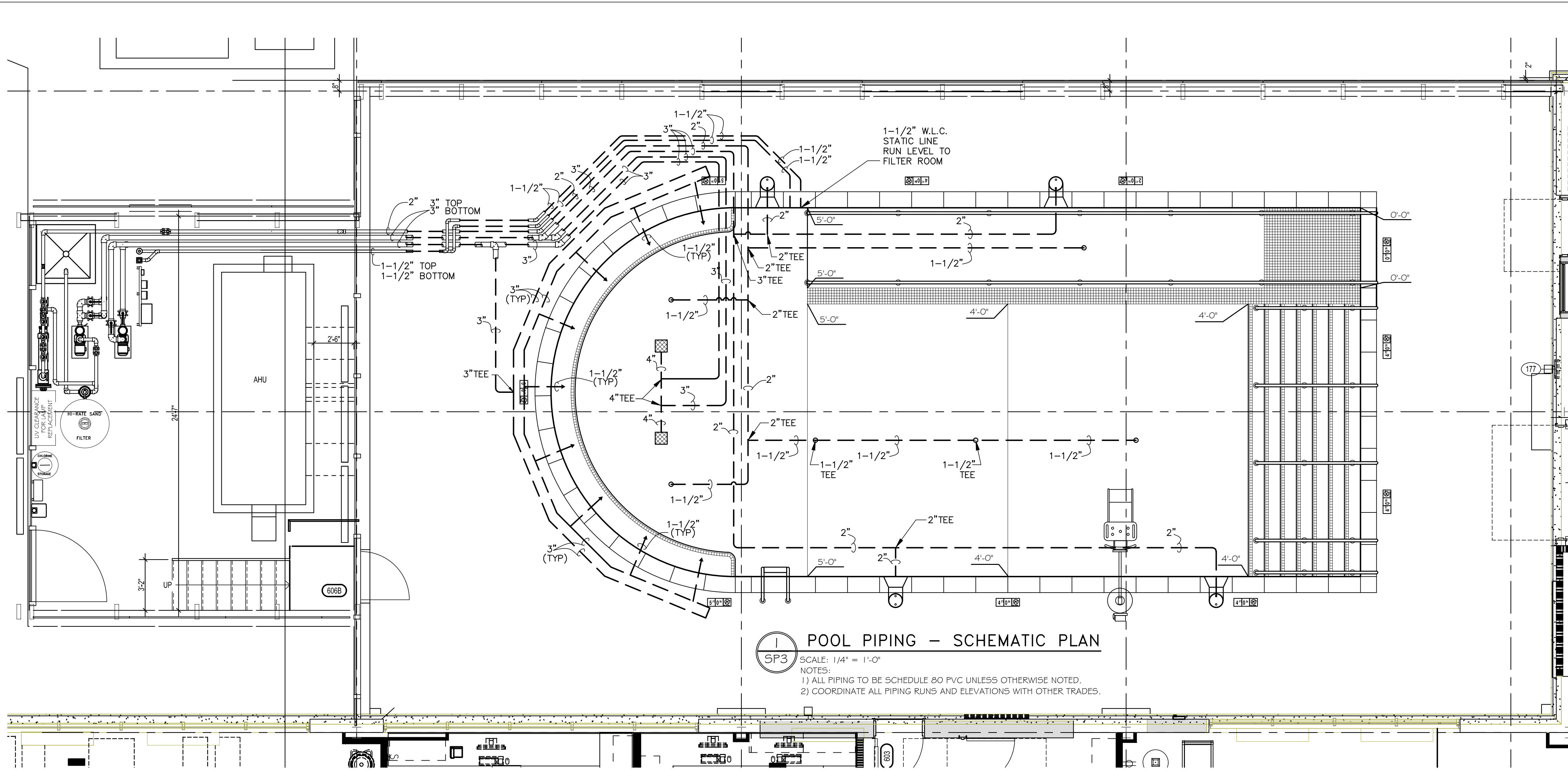


three inches = one foot
one and one half inches = one foot
one inch = one foot
three quarters inch = one foot
one half inch = one foot
three eighths inch = one foot
one quarter inch = one foot
one eighth inch = one foot



CONSULTANTS:						PROJECT MANAGER:		Drawing Title		Project Title		Office of Facilities Management	
<p>Project Manager: BRAY MOONEY CONSULTING 410 E. 21 STREET CHESTER, PA 19013 Tel: (610) 872-3716</p> <p>Architect: ARRAY HEALTHCARE SOLUTIONS 2520 RENAISSANCE BLVD., SUITE 110 KING OF PRUSSIA, PA 19406 Tel: (610) 270-6599</p> <p>Structural Engineer: ZG, STRUCTURAL CONSULTING ENGINEERS 180 W. RIDGE PIKE LIMERICK, PA 19468 Tel: (214) 324-5559</p> <p>MEP/FP Engineer: APOGEE FACILITIES CONSULTING GROUP 7330 CHAPEL HILL ROAD, SUITE 202 RALEIGH, NC 27606 Tel: (919) 685-7420</p> <p>Civil Engineer: GUIDON DESIGN 2453 N DELAWARE STREET INDIANAPOLIS, IN 46205 Tel: (317) 800-6388</p> <p>Fire Protection Consultant: HARRINGTON GROUP 7508 E. INDEPENDENCE CHARLOTTE, NC 28277 Tel: (704) 531-6077</p> <p>Cost Estimator: BRAY MOONEY CONSULTING 410 E. 21 STREET CHESTER, PA 19013 Tel: (610) 872-3716</p> <p>Aquatic Consultant: ATLANTIC AQUATIC ENGINEERING 1823 DEEP RUN ROAD PIPERSVILLE, PA 18947 Tel: (215) 786-0409</p>						<p>Project Number: 3627</p> <p>Scale: As indicated</p> <p>Bray Mooney Consulting</p>		<p>POOL PIPING SCHEMATIC LAYOUT AND MECHANICAL ROOM DETAILS ALT #1</p> <p>Approved: Project Director</p>		<p>RENOVATE BUILDING 69</p> <p>Location: 1400 Black Horse Hill, Coatesville, PA</p> <p>Date: 01/22/2014</p> <p>Checked: JDB</p> <p>Drawn: ML</p> <p>Dwg. of: SP3</p>		<p>VA Project Number: 542-CSI-203</p> <p>Building Number: 69</p> <p>Drawing Number: SP3</p> <p>Department of Veterans Affairs</p>	