

# Amendment #A00004 - PreBid Clarifications

PROJECT: UPGRADE UNDERGROUND UTILITIES – TEMPLE VAMC  
VA PROJECT NUMBER: 674-10-101  
BID DATE: 06-05-14

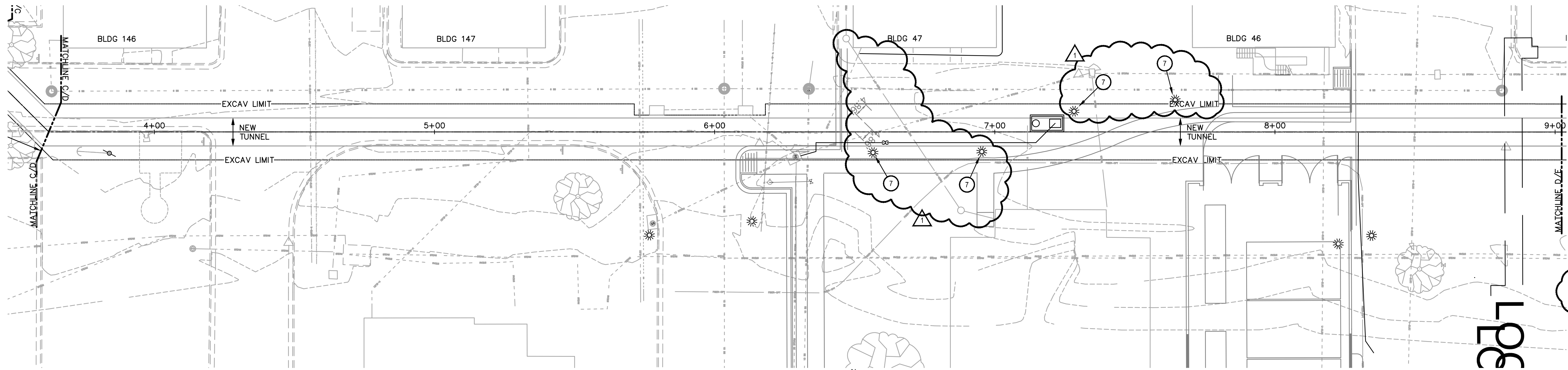
## **DRAWINGS:**

1. Sheet M1.1: Revise scheduled voltage for Pump SP-1 to 230/1/60.
2. Sheet CU1.2, Detail 1: Between approximate stations 6+25 and 7+75 contractor shall remove four (4) existing light fixtures, poles, piers and associated wiring if / as required to construct tunnel. After tunnel construction, contractor shall reinstall these items equivalent to their original installation and location.
3. Sheet MS3.4, Detail 2: Revise breaker callout to read 20/2 in lieu of 20/1.
4. Sheet CU1.2, Detail 1 & D: Revise the existing fiber optic conduit layout per the attached drawing and protect the line as required to install the new tunnel.

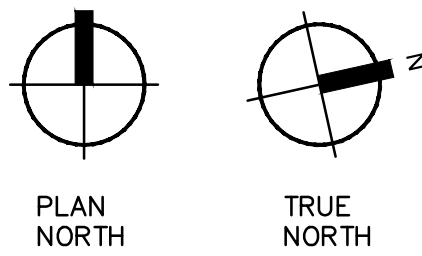
END OF AMENDMENT #A00004

A  
one inch = one foot  
B  
three-quarters inch = one foot  
C  
one-half inch = one foot  
D  
three-eighths inch = one foot  
E  
one-quarter inch = one foot  
F  
one-eighth inch = one foot

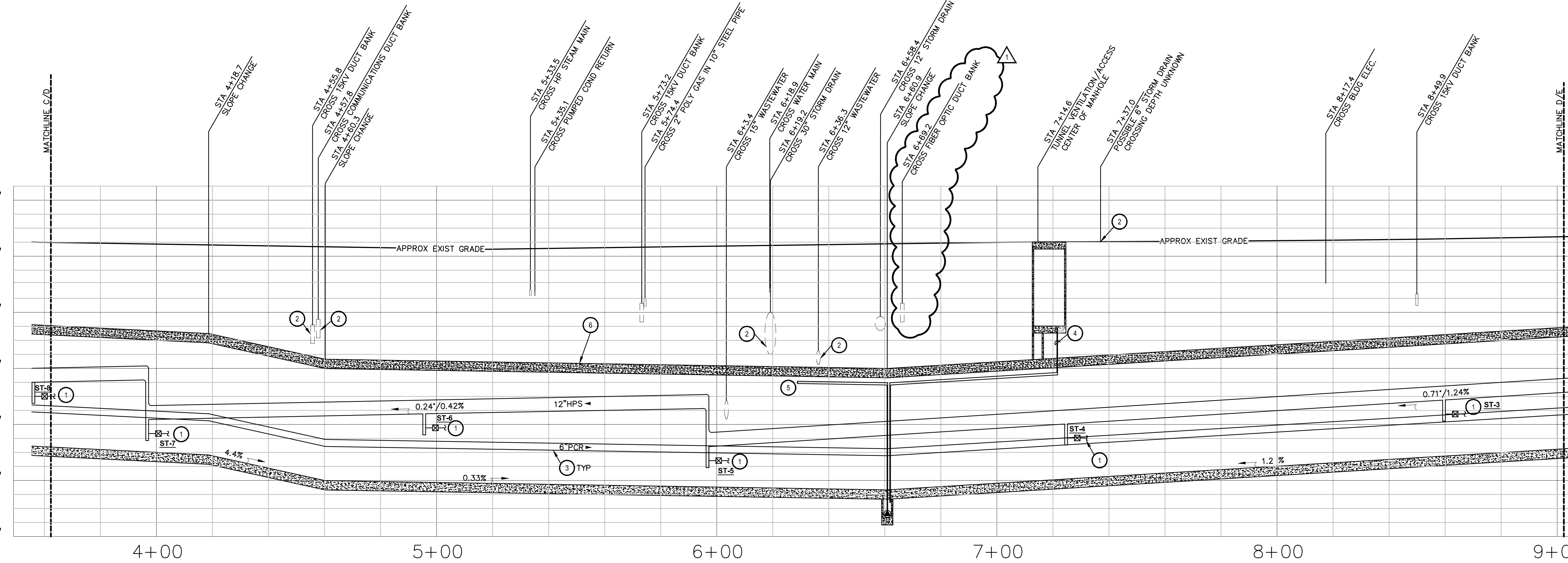
H:\09\091705\DWGS\VA TEMPLE UTILITIES\MECHANICAL\MECHANICAL PLAN & PROFILE.DWG last saved: 05-30-2014 12:37:06 PM by DANIEL JOHNSON



**1 UTILITY TUNNEL PLAN - SEGMENT D**  
SCALE: 1" = 20'



- MECHANICAL NOTES :**
- 1 STEAM TRAP TO DISCHARGE INTO PUMPED CONDENSATE RETURN (NOT SHOWN). SEE DETAILS 2-4/MS4.2.
  - 2 AT THE START OF THE PROJECT THE CONTRACTOR SHALL VERIFY THE DEPTH OF THIS UTILITY. IF THE DEPTH VARIES FROM WHAT IS SHOWN, THEN THE ARCHITECT SHALL BE NOTIFIED SO THAT THE DESIGN CAN BE ADJUSTED.
  - 3 CONDENSATE DRAIN SLOPED WITH TUNNEL FLOOR. TYP.
  - 4 2" AREAWAY DRAIN FROM TUNNEL/ACCESS POINT. GRAVITY DRAIN TO SUMP PIT.
  - 5 2" SUMP DISCHARGE TO NEW STORM DRAIN INLET EXIT TUNNEL AT APPROX STA 6+28.84. COORDINATE TIE IN TO INLET WITH CIVIL. SEE C2.2.
  - 6 NEW PRECAST TUNNEL (TYP).
  - 7 REMOVE EXISTING LIGHT FIXTURES, POLES, PIERS, AND ASSOCIATED WIRING IF/AS REQUIRED TO CONSTRUCT TUNNEL. SAFELY STORE AND REINSTALL EQUIVALENT TO ORIGINAL CONDITIONS.



**D SEGMENT D TUNNEL PROFILE**  
SCALE: 1" = 20' HORIZ, 1" = 4' VERT

- LEGEND**
- EXISTING TO REMAIN
  - NEW WORK

5/30/14	LP	AMMENDMENT #4
No.	Date	By
Revisions		

**Architectural Edge Inc.**  
3010 Scott Blvd.  
Suite 102  
Temple, Texas 76704  
254.771.2054 P  
254.773.2144 F  
•architecture  
•design services  
•consultation  
email@archedge.com

**O'CONNELL ROBERTSON**  
ARCHITECTURE  
ENGINEERING  
INTERIORS  
811 BARTON SPRINGS ROAD  
SUITE 200  
AUSTIN, TEXAS 78704  
(817) 478-7286  
FAX (817) 478-7441  
OR PROJECT NO. 0917.05

STATE OF TEXAS  
Professional Engineer  
Nicholas Matthew Patterson  
91113  
9/30/14  
ENGINEERING FIRM:  
O'CONNELL ROBERTSON  
FIRM REGISTRATION NO. F-2708

Drawing Title  
**MECHANICAL PLAN & PROFILE**  
Approved: Chief, Engineering Services  
DAVID SUMMERS, CHIEF  
Approved: Project Manager  
VICTOR GAW, P.E.

Project Title  
**UNDERGROUND UTILITIES**  
Building Number  
SITE  
Checked  
NP  
Drawn  
KF  
Location  
TEMPLE VAMC - TEMPLE, TEXAS

Date  
2/26/2013  
Project No.  
674-10-101  
Drawing No.  
**CU1.2**  
Dwg. Of

**Veterans Affairs**