

ONE AND ONE HALF INCHES = ONE FOOT

ONE INCH = ONE FOOT

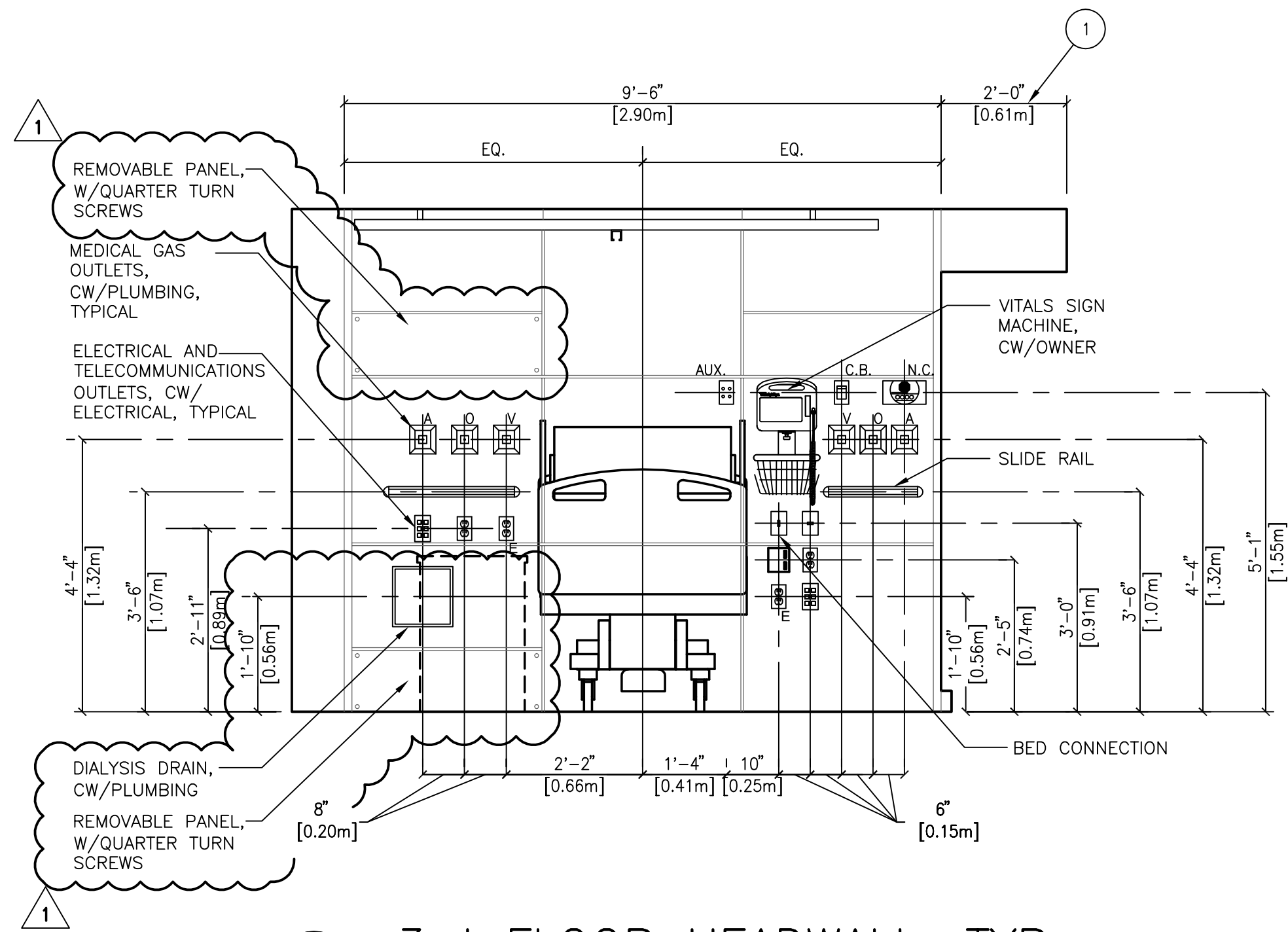
THREE QUARTERS INCH = ONE FOOT

ONE HALF INCH = ONE FOOT

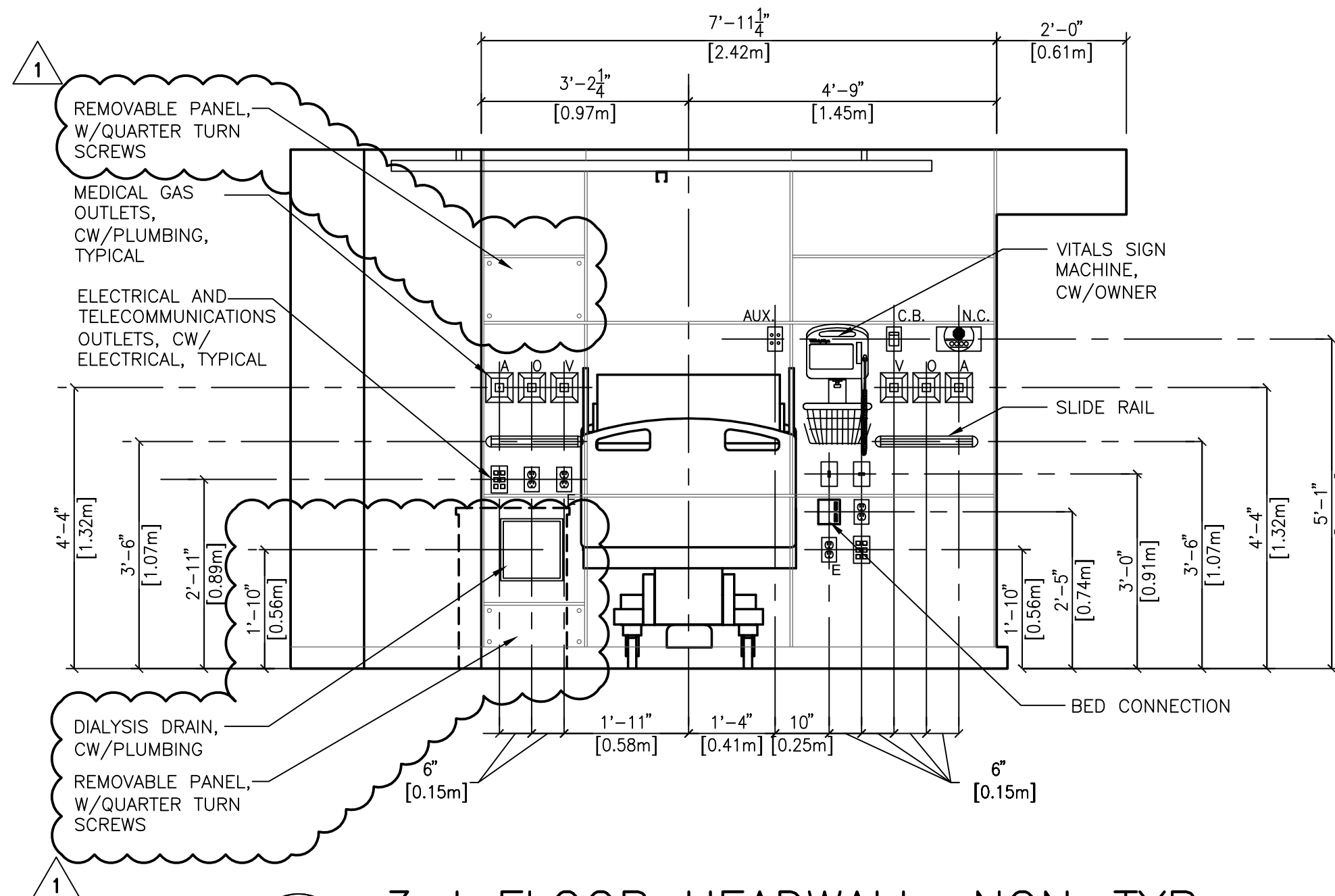
THREE EIGHTHS INCH = ONE FOOT

ONE QUARTER INCH = ONE FOOT

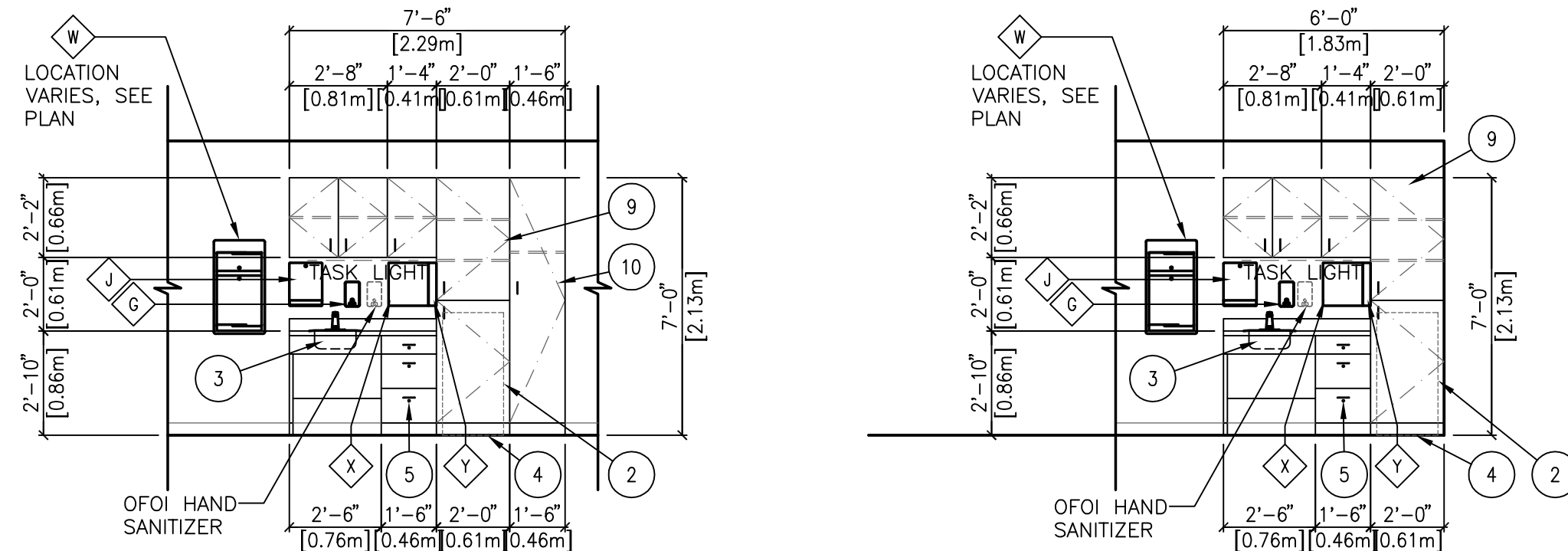
ONE EIGHTH INCH = ONE FOOT



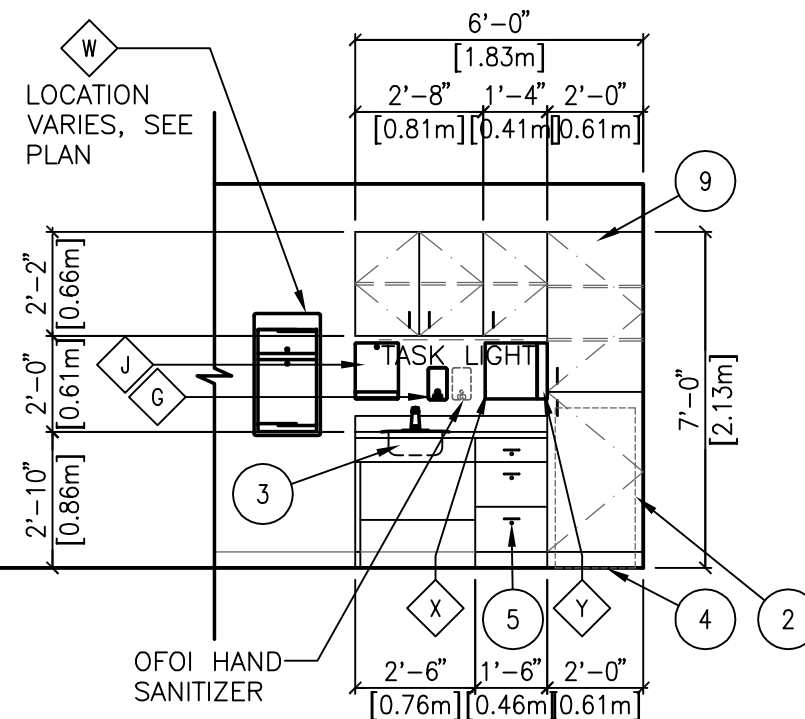
1 3rd FLOOR HEADWALL, TYP.
ROOM 302 SIM, 303 SIM, 304 SIM, 317, 323 SIM, 326, 332, 338, 345 SIM, 322 O.H., 327 O.H., 337 O.H., 339 O.H., 340 O.H., 344 O.H., 346 O.H., 352 O.H.
SCALE: 1/2" = 1'-0"



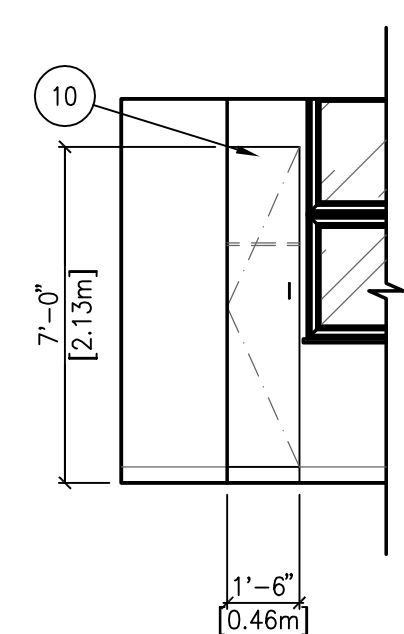
2 3rd FLOOR HEADWALL, NON-TYP
ROOM 309, 310, 312 - SOUTH
SCALE: 1/2" = 1'-0"



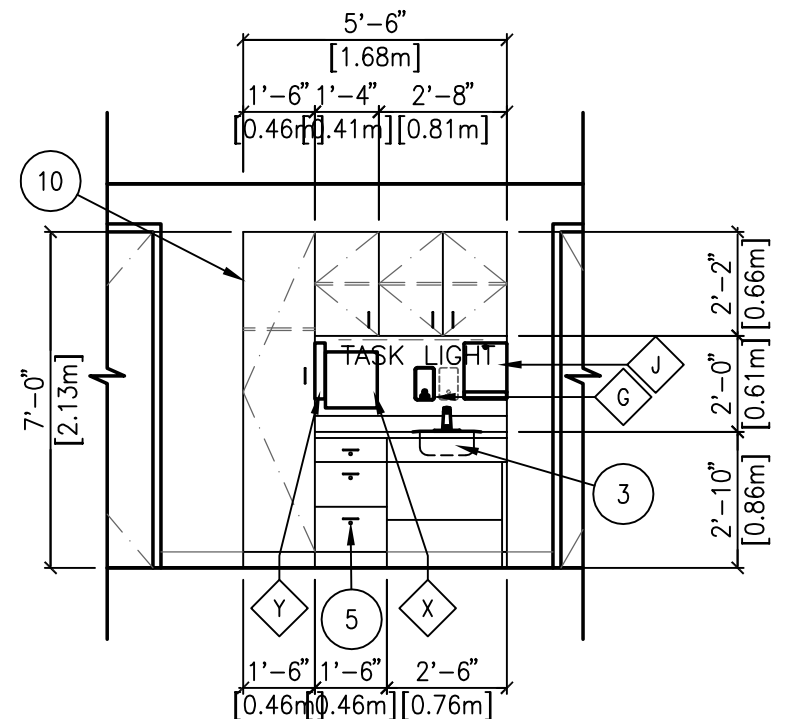
3 PAT. RM., TYP.
SCALE: 1/4" = 1'-0"



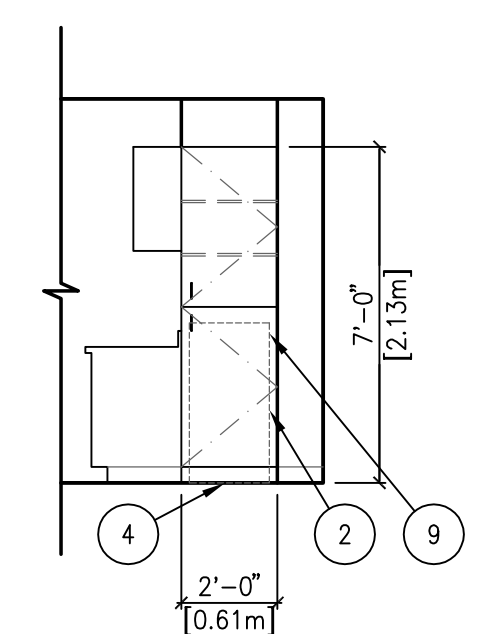
4 PAT. RM
ROOM 322, 327, 339 - VARIES
ROOM 326 O.H., 338 O.H. - EAST
SCALE: 1/4" = 1'-0"



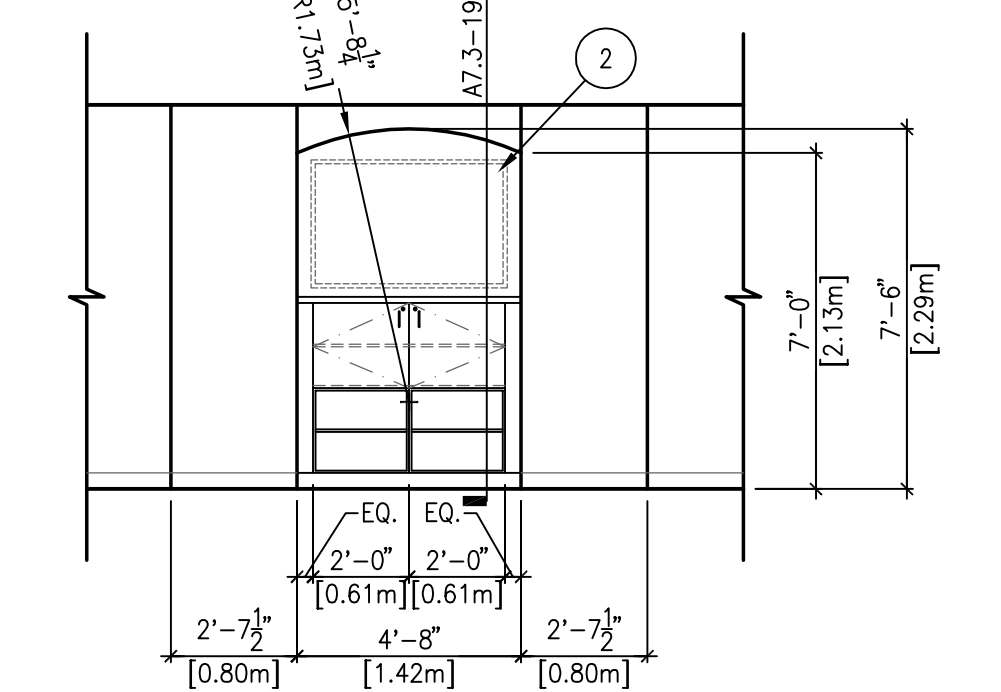
5 PAT. RM
ROOM 322, 327 SIM, 338 SIM, 339 SIM. - VARIES
ROOM 326 O.H. SIM - WEST
SCALE: 1/4" = 1'-0"



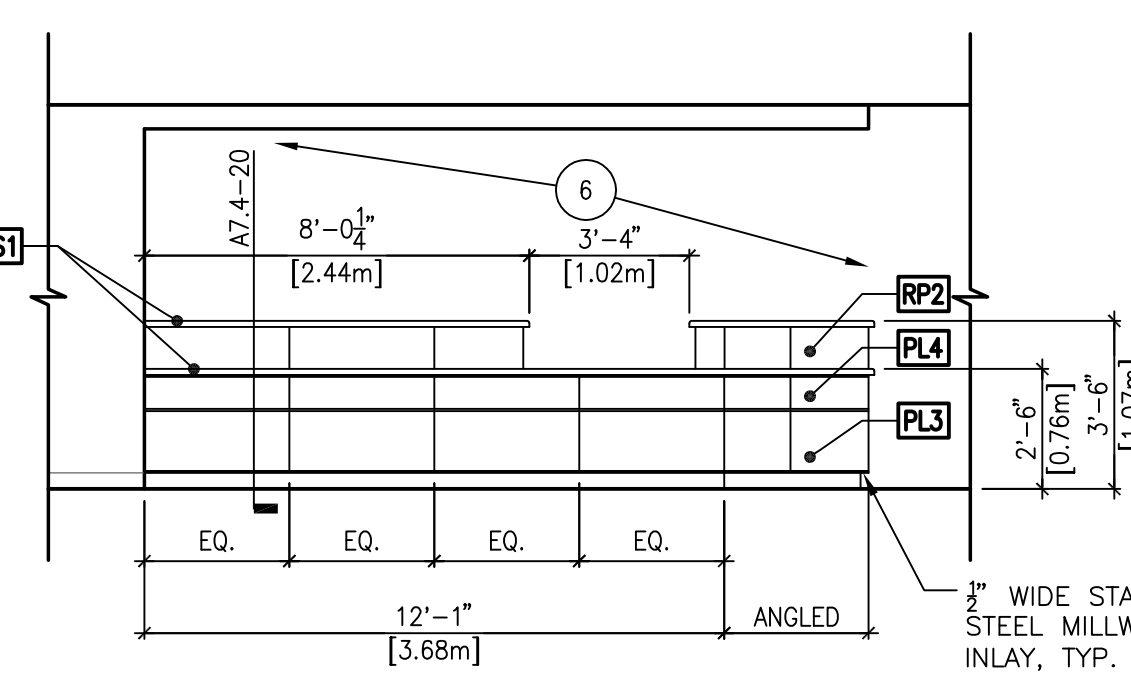
6 PAT. RM
ROOM 323 - NORTH
SCALE: 1/4" = 1'-0"



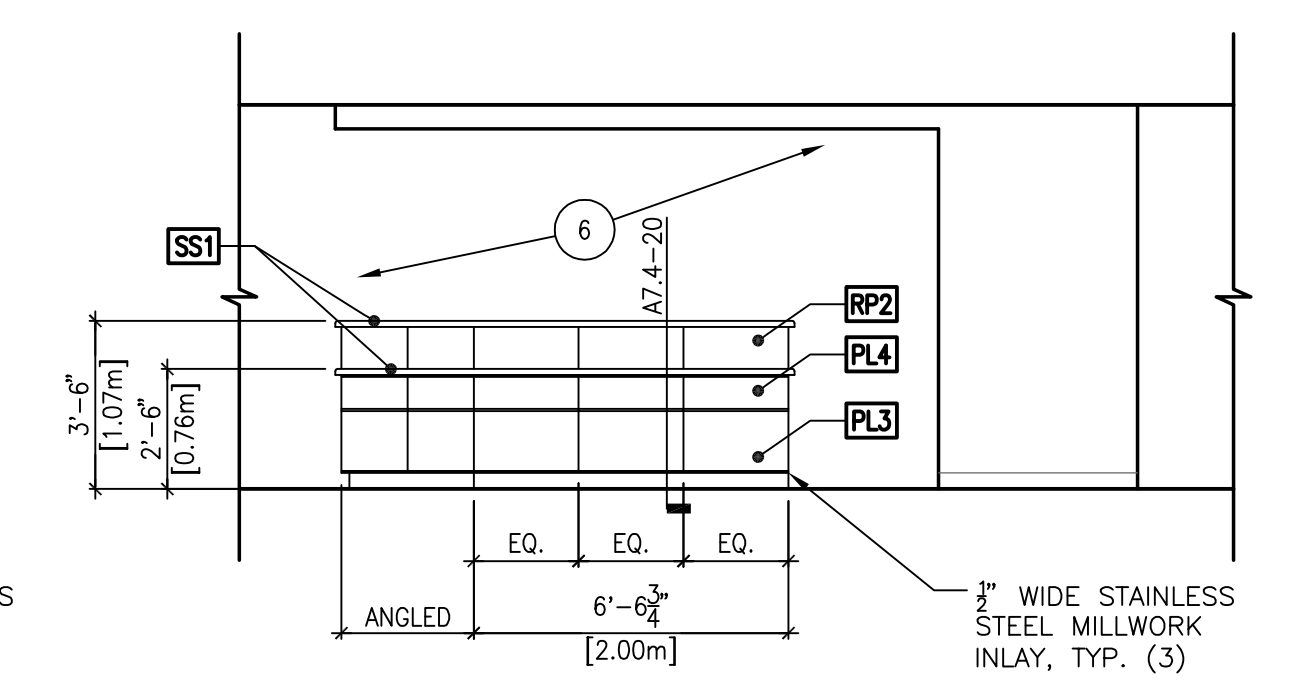
7 PAT. RM
ROOM 323 - WEST
SCALE: 1/4" = 1'-0"



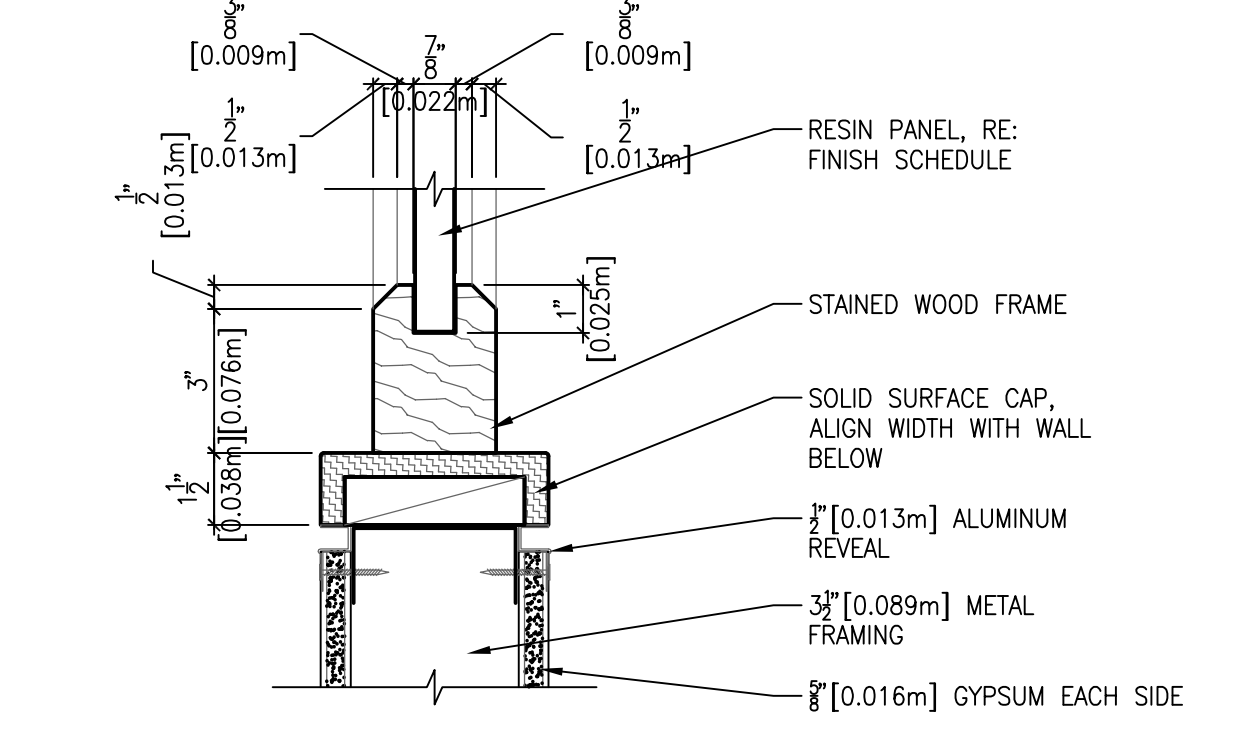
8 TV SURROUND, TYP.
ROOM 211, 213 - NORTH
SCALE: 1/4" = 1'-0"



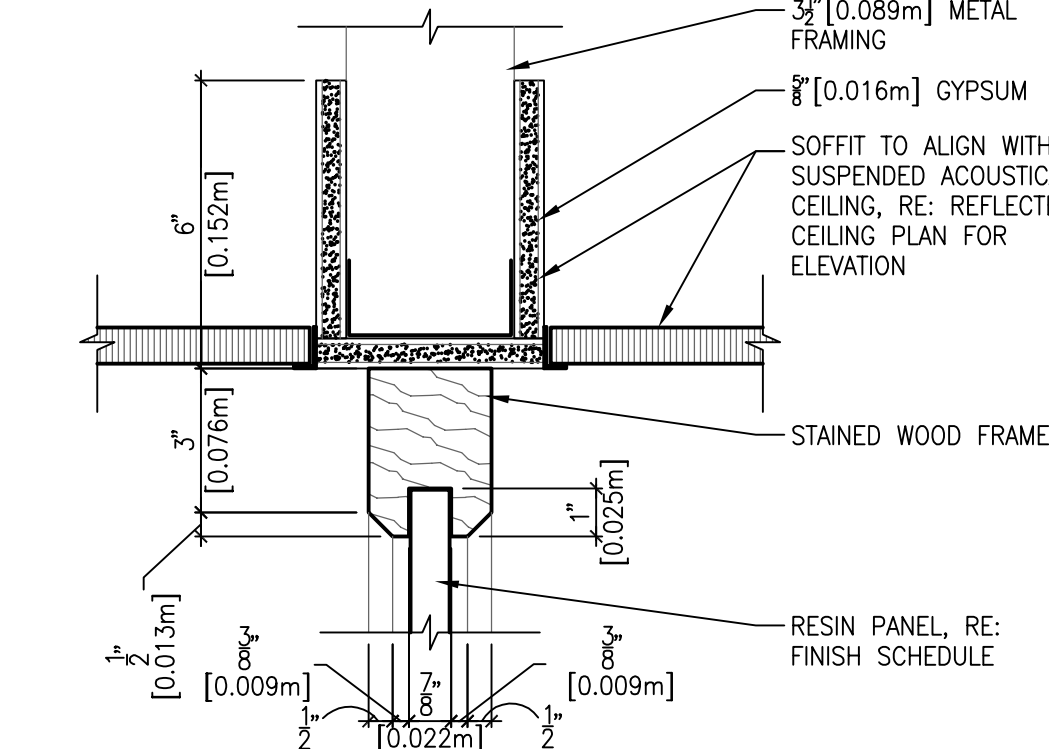
9 NURSE STATION
CORRIDOR C33 - SOUTH
SCALE: 1/4" = 1'-0"



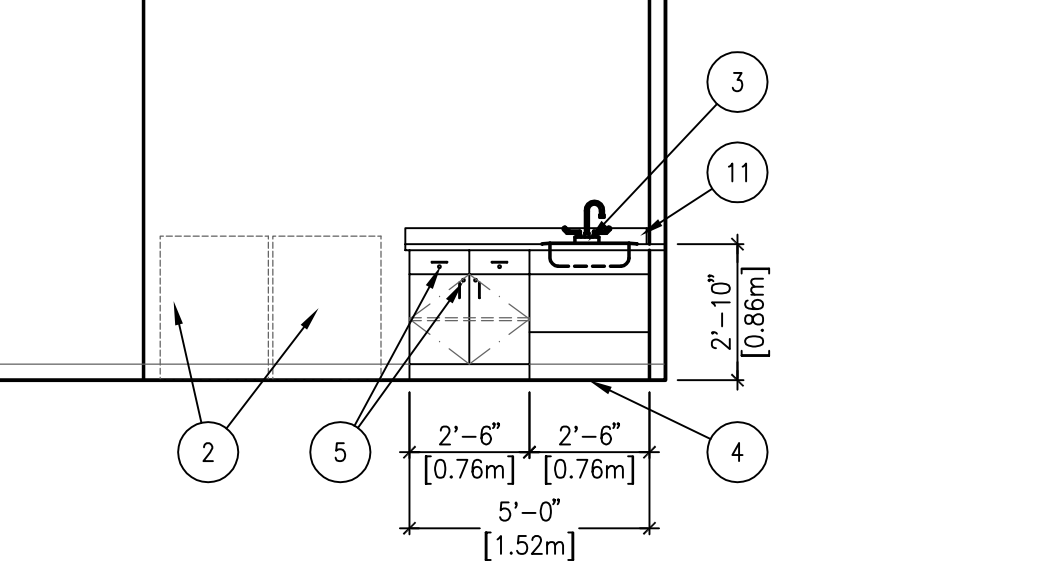
10 NURSE STATION
CORRIDOR C34 - EAST
SCALE: 1/4" = 1'-0"



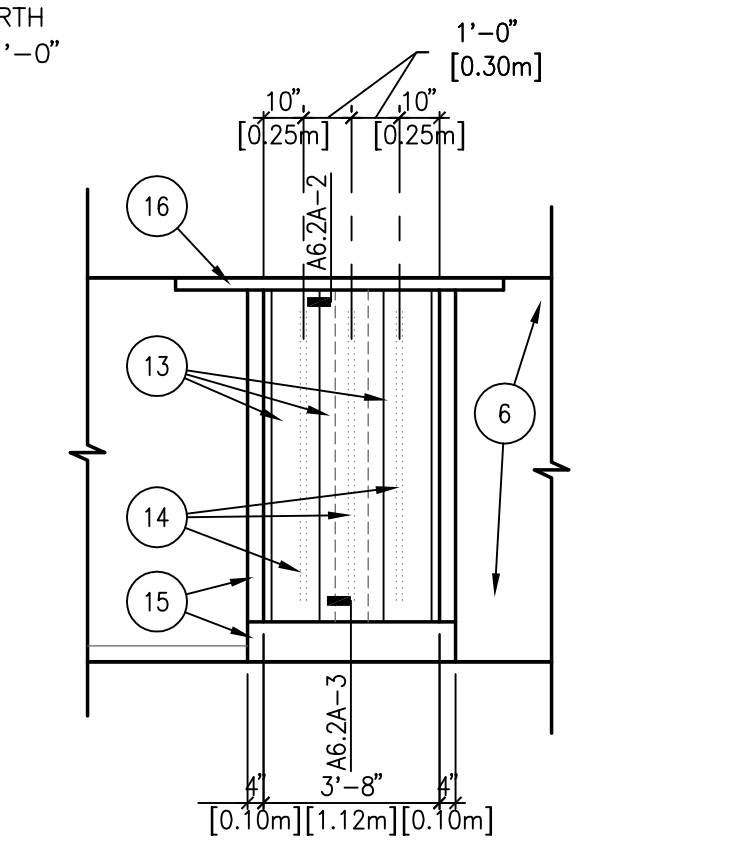
13 RESIN PANEL SILL
SCALE: 3" = 1'-0"



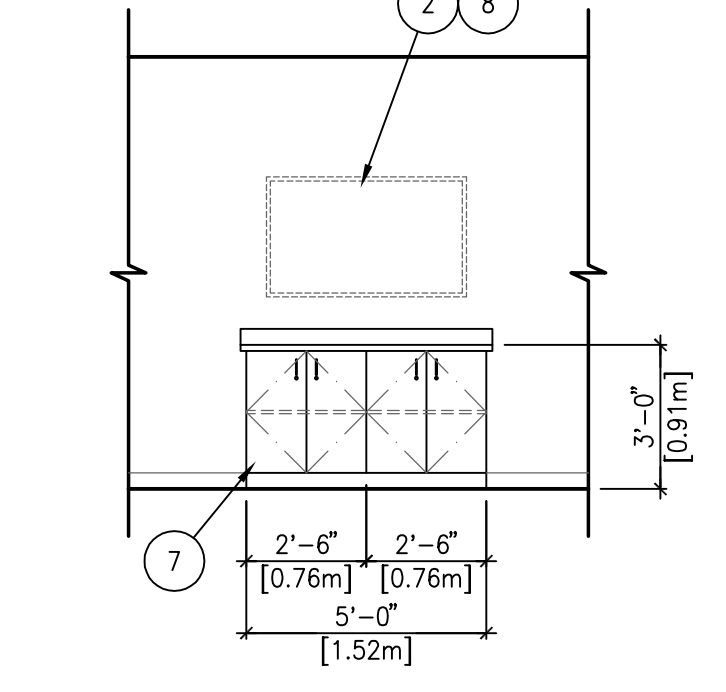
14 RESIN PANEL HEAD
SCALE: 3" = 1'-0"



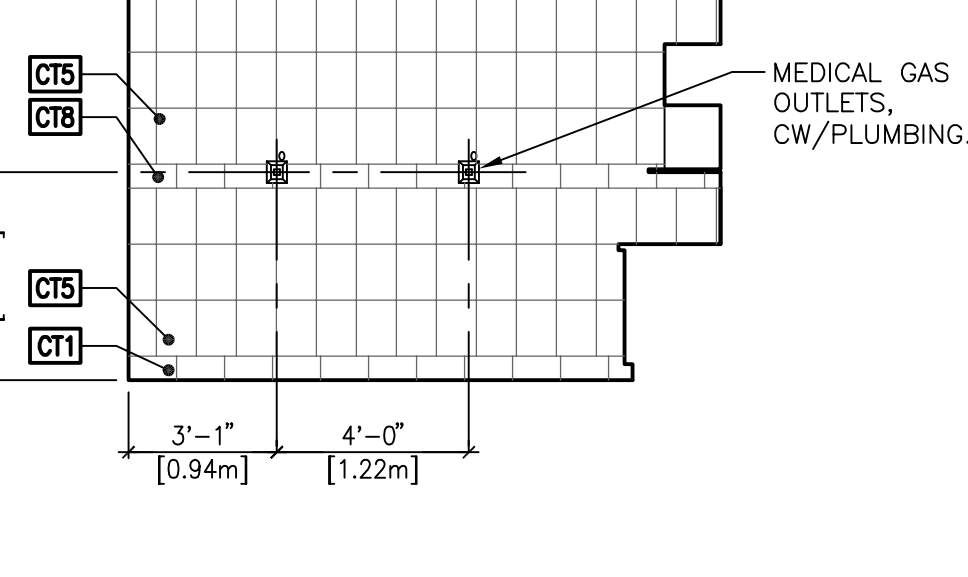
15 LAUNDRY
LAUNDRY 222 - SOUTH
SCALE: 1/4" = 1'-0"



11 CORRIDOR
CORRIDOR C33 - SOUTH
SCALE: 1/4" = 1'-0"



12 MEETING
ROOM 132 - SOUTH AND EAST
SCALE: 1/4" = 1'-0"

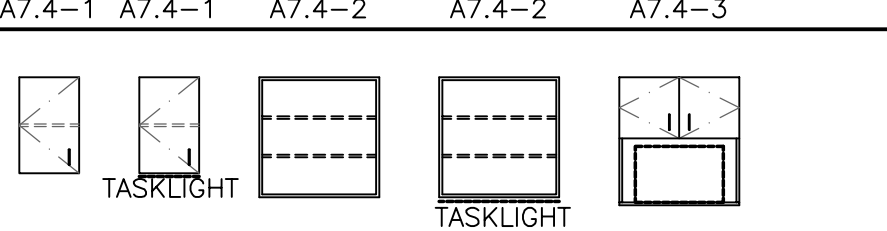


16 TUB ROOM
ROOM 331 - EAST
SCALE: 1/4" = 1'-0"

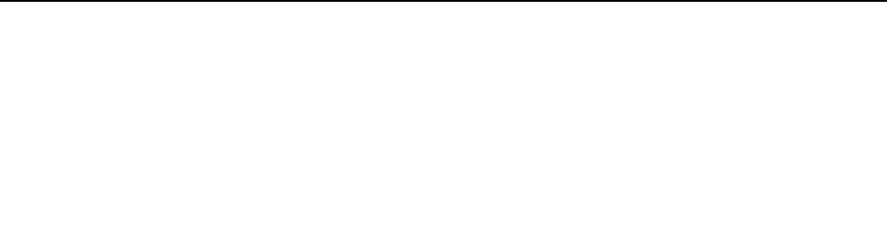
MILLWORK LEGEND:

REFER TO REFERENCED DETAILS FOR THE FOLLOWING COMPONENTS

UPPER CABINETS



BASE CABINETS



GENERAL NOTES:

- RE: A1.4 THRU A1.6 FOR WALL TYPES AND DIMENSION PLANS.
- RE: A10.1 THRU A10.4 FOR FURNITURE AND EQUIPMENT PLANS.
- RE: A6.3 AND A6.4 FOR DOOR SCHEDULE AND WINDOW TYPES.
- RE: A6.1 AND A6.2 FOR FINISHES.
- CONTRACTOR SHALL PROVIDE BLOCKING OR BACKING FOR ALL WALL-MOUNTED ACCESSORIES AND EQUIPMENT. ASSURE THAT ALL REQUIRED BACKING IS INSTALLED IN WALLS PRIOR TO INSTALLING DRYWALL. THIS INCLUDES BACKING FOR WALL-MOUNTED DOORSTOPS. WOOD BLOCKING/BACKING TO BE FIRE TREATED.
- PROVIDE MOISTURE RESISTANT GYPSUM WALLBOARD AT ALL AREAS EXPOSED TO MOISTURE.
- PROVIDE 'U' TRIM AT ALL GYPSUM BOARD TRANSITIONS TO DISSIMILAR MATERIALS.
- RE: A9.1 THRU A9.3 FOR REFLECTED CEILING PLANS.
- THE HINGE SIDE OF DOOR FRAMES SHALL BE MOUNTED 4" [102mm] MIN. FROM ADJACENT PERPENDICULAR WALL UNLESS NOTED OTHERWISE.
- PROVIDE INSULATED COVERS AT ALL EXPOSED PIPING UNDER LAVATORIES.
- FIELD VERIFY ALL DIMENSIONS PRIOR TO FABRICATION OF CASEWORK.
- MIRRORS ARE TO BE CENTERED OVER THE SINKS.
- VERIFY ALL MILLWORK LOCKING REQUIREMENTS PRIOR TO INSTALLATION.
- ALL EXPOSED SURFACES OF CABINETS AND CASEWORK ARE TO BE FINISHED WITH DECORATIVE PLASTIC LAMINATE. EXPOSED SURFACES ARE ANYTHING THAT CAN BE SEEN WITH THE DOORS AND DRAWERS CLOSED. THIS INCLUDES THE UNDER SIDE AND TOP OF WALL MOUNTED CABINETS (INCLUDING SCRIBES AND FILLER PANELS). ALL SURFACES OF THE COUNTER SUPPORTS, AND ALL OPEN CABINET SHELVES AND SURFACES. IN ADDITION, ALL SIX SURFACES OF ALL CABINET DOORS AND ALL SIX SURFACES OF OPEN ADJUSTABLE SHELVES ARE TO BE FINISHED IN DECORATIVE PLASTIC LAMINATE. THE FRONT AND FOUR EDGES OF ALL DRAWER FRONTS ARE TO RECEIVE DECORATIVE PLASTIC LAMINATE. THE SEMI-EXPOSED INTERIOR SURFACES OF DRAWERS AND CABINETS (THOSE SURFACES THAT CAN ONLY BE SEEN WHEN THE DRAWER OR DOOR IS OPEN) ARE TO BE MELAMINE WITH VINYL EDGES, EXCEPT AS NOTED IN MILLWORK DETAILS. THE FOUR EDGES OF ALL MELAMINE ADJUSTABLE SHELVES WITHIN CLOSED CABINETS ARE TO BE FINISHED WITH VINYL EDGING. THE UNDERSIDES OF ALL COUNTER TOPS ARE TO RECEIVE LAMINATE BACKING SHEET.
- PROVIDE STAINLESS STEEL FILLER BEHIND ANY MIRRORS AND OTHER WALL MOUNTED ACCESSORIES WHEN ITEM IS INSTALLED PARTIALLY OVER CERAMIC TILE.

SHEET NOTES:

- THIS DIMENSION TO BE 5'-8" [1.73m] @ ROOM 323 AND 5'-0" [1.52m] @ ROOM 345.
- EQUIPMENT, RE: EQUIPMENT PLAN AND SCHEDULE.
- PLUMBING FIXTURE, CW/PLUMBING.
- CONTINUE FLOOR FINISH UNDER MILLWORK.
- MILLWORK LOOKS RE: SPECIFICATIONS.
- OPEN TO BEYOND.
- POWER AND DATA OUTLET IN BACK OF EACH CABINET, CW/ ELECTRICAL AND TELECOMM DRAWINGS.
- CENTER MONITOR ON MILLWORK AND VERIFY HEIGHT WITH OWNER.
- LINEN CABINET, RE: A7.5-6.
- WARDROBE CABINET, RE: A7.5-7.
- BACKSPLASH.
- WALL MOUNTED VITALS SIGNS MACHINE, CW/ OWNER.
- TOP SUPPORTED 3FORM PANEL, RE: FINISH SCHEDULE.
- LIGHT FIXTURE FOR BACKLIGHTING 3FORM PANELS, CW/ ELECTRICAL.
- TILE COVERED SURROUND, RE: FINISH SCHEDULE.
- SOFFIT, RE: REFLECTED CEILING PLAN.

ACCESSORY LEGEND:

- WATER CLOSET, CW/ PLUMBING
- 36" [914m] STAINLESS STEEL GRAB BAR
- 36" [914m] STAINLESS STEEL GRAB BAR - SAFETY
- 42" [1067m] STAINLESS STEEL GRAB BAR
- 42" [1067m] STAINLESS STEEL GRAB BAR - SAFETY
- FOLD-UP STAINLESS STEEL GRAB BAR
- TOILET PAPER DISPENSER (V.C.)
- TOILET PAPER DISPENSER - SAFETY
- SEAT COVER DISPENSER (V.C.)
- SOAP DISPENSER (V.C.)
- SOAP DISPENSER - SAFETY
- MIRROR - 24"x48" [610m x 1219m]
- MIRROR - 24"x48" [610m x 1219m] SAFETY
- MIRROR - 18"x24" [457m x 610m]
- MIRROR - 48"x40" [1219m x 1016m]
- PAPER TOWEL DISPENSER (V.C.)
- PAPER TOWEL DISPENSER - RECESSED
- 24" [610m] WIDE x 4" [102mm] DEEP STAINLESS STEEL SHELF
- SEMI-RECESSED FIRE EXTINGUISHER CABINET
- RECESSED FIRE EXTINGUISHER CABINET - FLAT TRIM
- SHELF WITH MOP AND BROOM HOLDERS AND HOOKS
- SURFACE-MOUNTED BABY CHANGING STATION (V.C.)
- SEMI-RECESSED SANITARY NAPKIN DISPENSER (V.C.)
- ROBE HOOK
- 24" [610m] STAINLESS STEEL GRAB BAR
- 24" [610m] STAINLESS STEEL GRAB BAR - SAFETY
- 48" [1219m] STAINLESS STEEL GRAB BAR
- 48" [1219m] STAINLESS STEEL GRAB BAR - SAFETY
- WALL-MOUNTED FOLD-DOWN SHOWER SEAT
- STAINLESS STEEL PRIVACY SCREEN
- SANITARY NAPKIN DISPOSAL (V.C.)
- 30" [762m] STAINLESS STEEL GRAB BAR - SAFETY
- SEMI-RECESSED MEDICINE BOX W/ LIGHT, CW/ELECTRICAL
- SHARPS DISPOSAL (V.C.)
- 3-BOX GLOVE DISPENSER (V.C.)
- 18" STAINLESS STEEL GRAB BAR