

ONE EIGHTH INCH = ONE FOOT  
ONE QUARTER INCH = ONE FOOT  
ONE HALF INCH = ONE FOOT  
THREE EIGHTHS INCH = ONE FOOT  
ONE INCH = ONE FOOT  
ONE AND ONE HALF INCHES = ONE FOOT  
TWO INCHES = ONE FOOT  
THREE INCHES = ONE FOOT

METRIC CONVERSION			
inch x 25.4 = mm			
INCHES	MM	INCHES	MM
1/2	12.7	2	50.8
3/4	19.1	2-1/2	63.5
1	25.4	3	76.2
1-1/4	31.8	4	101.6
1-1/2	38.1	6	152.4

GENERAL NOTES:

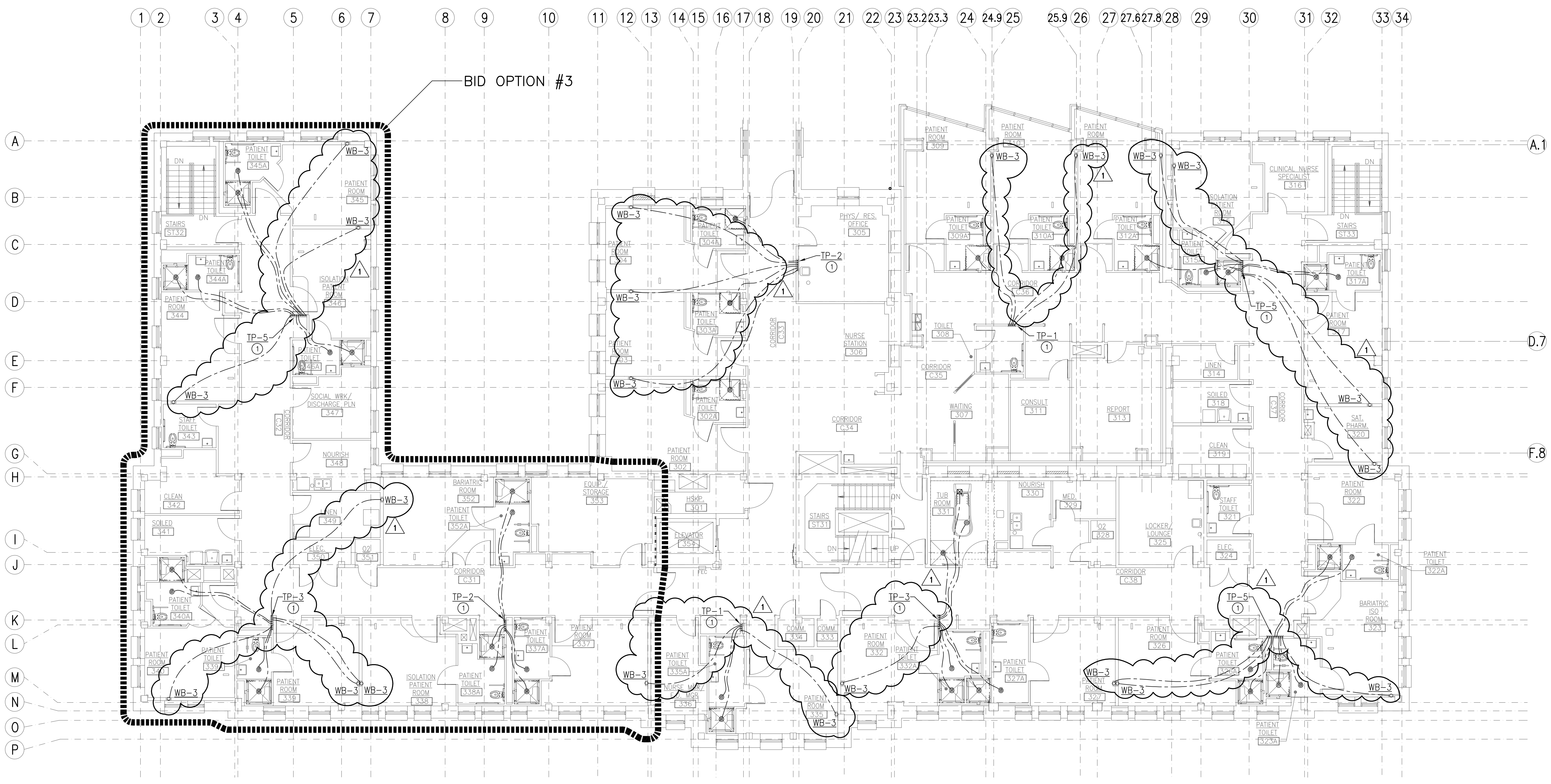
- A. ALL DEMOLITION OF PLUMBING SYSTEMS SHALL BE CLOSELY COORDINATED WITH THE CONTRACTORS PHASING OF THE PROJECT. VERIFY DEMOLITION OF PLUMBING PIPING WITH ALL TRADES PRIOR TO START OF DEMOLITION.
- B. PRIOR TO BIDDING, OBTAIN A COPY OF THE SPECIFICATIONS AND PLANS. VISIT THE JOB SITE, TAKE NECESSARY MEASUREMENTS, NOTE EXISTING CONDITIONS, AND GATHER ALL OTHER INFORMATION NEEDED FOR AN ACCURATE BID. NO ALLOWANCES WILL BE MADE FOR EXTRA COSTS RESULTING FROM FAILURE TO NOTE EXISTING CONDITIONS.
- C. ALL WORK SHALL BE PERFORMED IN STRICT ACCORDANCE WITH ALL APPLICABLE CODES AND STANDARDS, INCLUDING UBC, UPC, NFPA. PROVIDE PIPING EQUIPMENT AND MATERIALS IN ACCORDANCE WITH APPLICABLE PLUMBING CODE REGULATIONS AND STANDARDS, AUTHORITIES HAVING JURISDICTION, OR AS OTHERWISE RECOMMENDED OR DIRECTED BY MANUFACTURERS.
- D. PROVIDE SEAL BETWEEN WALLS AND PLUMBING FIXTURES PER HEALTH DISTRICT REQUIREMENTS.
- E. COLD AND HOT WATER SUPPLY PIPING SIZES FOR FIXTURE CONNECTIONS ARE NOT SHOWN ON PLANS. SEE FIXTURE SCHEDULE FOR CONNECTION SIZES.
- F. INSTALL ALL OVERHEAD PIPING AS CLOSE TO STRUCTURE AS POSSIBLE, OR AS DETAILED OTHERWISE.
- G. LOCATE AND LABEL ALL VALVES FOR SERVICE ACCESSIBILITY. VALVES INSTALLED ABOVE CEILINGS SHALL BE ACCESSIBLE THRU CEILING. SEE DRAWINGS FOR VALVE LOCATIONS.
- H. COORDINATE INSTALLATION WITH THE WORK OF OTHER TRADES PRIOR TO STARTING. IN THE EVENT THAT CONFLICTS ARE FOUND WITH THE WORK OF THE OTHER TRADES, BRING ALL SUCH CONFLICTS TO THE ARCHITECT'S ATTENTION FOR RESOLUTION PRIOR TO PROCEEDING WITH THE WORK IN THAT AREA. DEFICIENCIES CAUSED BY FAILURE TO PERFORM SUCH VERIFICATIONS SHALL BE CORRECTED AT NO ADDITIONAL EXPENSE TO OWNER. IMMEDIATELY NOTIFY ARCHITECT OF CONDITIONS IN CONFLICT WITH THE PLANS.
- I. COORDINATE INSTALLATION OF PIPING WITH STRUCTURAL COMPONENTS AND OTHER SYSTEM INSTALLATIONS.
- J. COORDINATE ALL FIXTURES, EQUIPMENT AND ROUGH-IN CONNECTION LOCATIONS AND SIZES WITH ARCHITECTURAL DRAWINGS, OWNER AND EQUIPMENT SUPPLIER PRIOR TO INSTALLATION.
- K. PROVIDE SEISMIC RESTRAINTS FOR ALL PIPE AND EQUIPMENT AS RECOMMENDED IN SMACNA "SEISMIC RESTRAINT MANUAL GUIDELINES FOR MECHANICAL EQUIPMENT", LATEST EDITION.
- L. ALL PIPING SHALL BE CONCEALED IN WALLS OR ABOVE CEILINGS UNLESS NOTED OTHERWISE. ALL WALLS IN WHICH WATER OR WASTE LINES ARE INSTALLED MUST BE PATCHED TO MATCH EXISTING AFTER LINES ARE INSTALLED.
- M. SEE SPECIFICATIONS FOR FURTHER REQUIREMENTS.

SHEET NOTES:

1. EXTEND NEW 3/8" PEY TUBING INDEPENDENTLY FROM TRAP PRIMER MANIFOLD TO DRAIN TRAP. ROUTE PIPING BELOW FLOOR. COORDINATE ROUTING WITH ALL OTHER DISCIPLINES, NEW AND EXISTING PIPING AND DUCTWORK.

LEGEND:

— SAN — (E) SANITARY SEWER	○ — PIPE ELBOW UP
— V — (E) VENT	◊ — PIPE ELBOW DOWN
— SAN — (N) SANITARY SEWER	— T — PIPE TEE BRANCH UP (WITH ELBOW)
— V — (N) VENT	— T — PIPE TEE DOWN
— — SAN — CLEAN OUT OR WALL CLEAN OUT	— — CAP
⊙ — SAN — FLOOR DRAIN, ROUND	
⊙ — SAN — FLOOR SINK	
— (E) — CONNECT NEW TO EXISTING	
— (N) — SHADED SIDE IS NEW WORK	



THIRD FLOOR PLAN —  
1 TRAP PRIMER PIPING  
SCALE: 1/8" = 1'-0"

ASI NO.1 REVISIONS	05/29/2014 DATE	<b>CSHQ</b> C.W. MOORE PLAZA 250 S. 5TH ST. BOISE, ID 83702 (208) 343-4635 FAX (208) 343-1858 http://www.cshqa.com	<b>STEVEN HARDY, P.E.</b> C.W. MOORE PLAZA 250 S. 5TH ST. BOISE, IDAHO PHONE: 208-343-4635 FAX: 208-343-1858 THESE DRAWINGS AND SPECIFICATIONS, AS INSTRUMENTS OF SERVICE, ARE AND SHALL REMAIN THE PROPERTY OF THE ARCHITECT. ENGINEER WHETHER THE PROJECT FOR WHICH THEY ARE MADE IS EXECUTED OR NOT. THESE DRAWINGS AND SPECIFICATIONS SHALL NOT BE USED BY ANY PERSON OR ENTITY OR OTHER PROJECTS, FOR ADDITIONS TO THIS PROJECT, OR COMPLETION OF THIS PROJECT WHEN PHASED WITHOUT THE WRITTEN CONSENT OF CSHQA OR ITS AFFILIATES. Copyright © 2013	STAMP PROFESSIONAL ENGINEER STATE OF IDAHO STEVEN G. HARDY 51314	CAD FILE NAME: 531-320_P2.3TP.DWG XREF FILE NAME: 531-320_30X42TLBK.DWG 531-320_67A3.DWG 531-320-67GRID.DWG	DRAWING TITLE THIRD FLOOR PLAN TRAP PRIMER PIPING APPROVED: CHIEF OF FACILITY MANAGEMENT SERVICE APPROVED: MEDICAL CENTER DIRECTOR	PROJECT TITLE BOISE VAMC BUILDING 67 EXPANSION BUILDING NUMBER 67 LOCATION VAMC BOISE, IDAHO DATE 07/12/2013 PROJECT NO. 531-320 DRAWING NO. P2.3TP DWG 122 OF 191	 DEPARTMENT OF VETERANS AFFAIRS
-----------------------	--------------------	---	---	--	--	--	---	------------------------------------