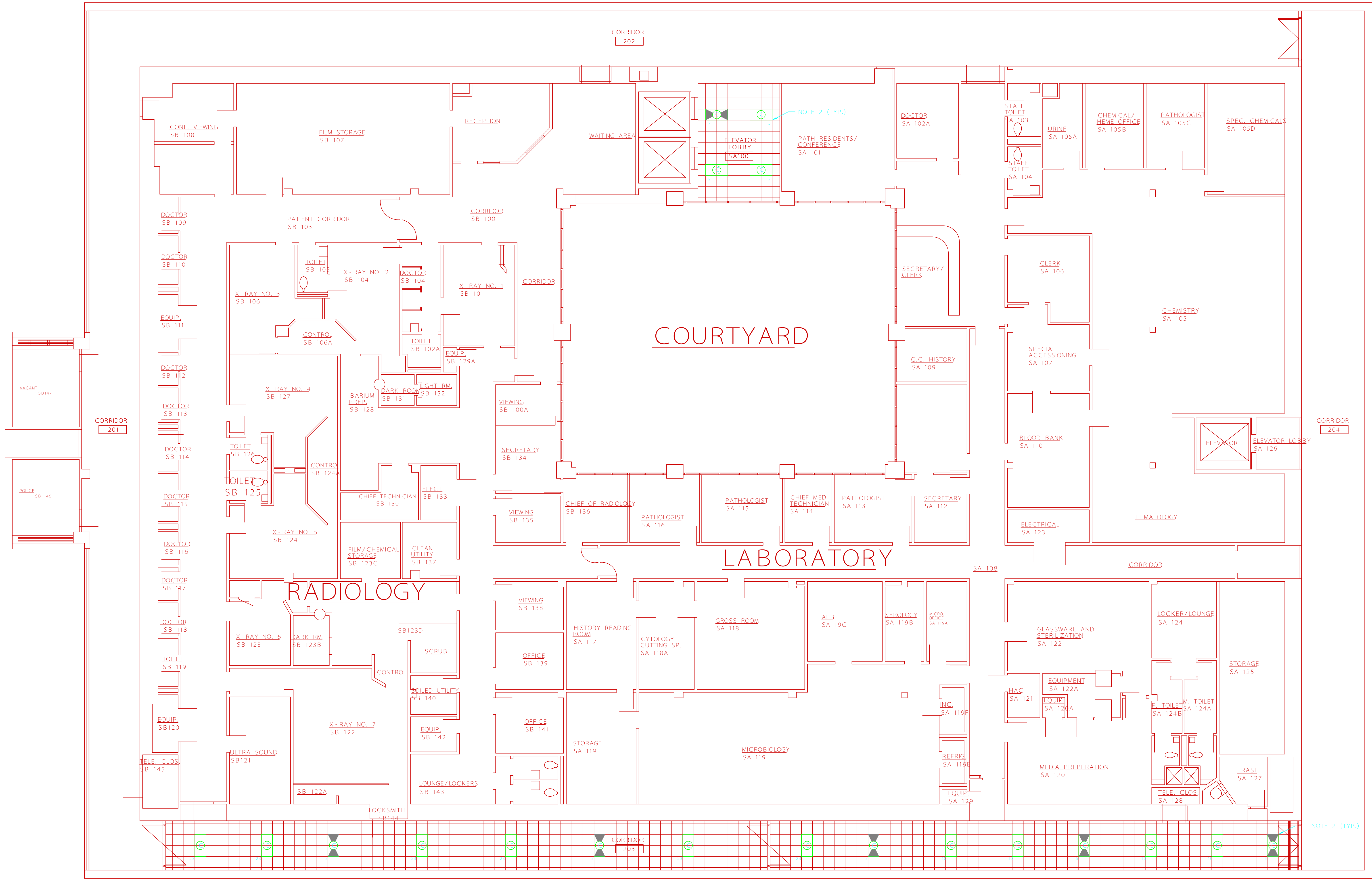


- NOTES:
- SEE SHEET E0.1 FOR ELECTRICAL LEGEND AND GENERAL NOTES.
  - REPLACE EXISTING WALL MOUNTED FIXTURES IN CORRIDOR WITH SPECIFIED TYPE SHOWN. REUSE EXISTING WIRE, CONDUIT, AND SWITCHES. NEW FIXTURES ARE MOUNTED AT THE HEIGHT AS THE EXISTING FIXTURES.
  - ANY CEILING MOUNTED ELECTRICAL DEVICES (E.G., EXIT SIGNS, SPEAKERS, ETC.) SHALL BE REMOVED AND REINSTALLED ONCE NEW CEILING HAS BEEN INSTALLED.
  - VERIFY ALL BALLAST VOLTAGES BEFORE ORDERING LIGHT FIXTURES.
  - EXISTING CIRCUIT FEEDING FIXTURES TO REMAIN.
  - ALL EXISTING LIGHT FIXTURES REMOVED TO BE SALVAGED AND TURNED OVER TO VA/COTR.
  - SEE SHEET 77-A1.3 FOR LOCATIONS OF CEILING MOUNTED DEVICES.



BUILDING 77 SECOND FLOOR PLAN - LIGHTING

SCALE: 1/8" = 1'-0"

1

CHARLES H. POWELL JR.  
CONSULTING ENGINEER  
299 N. WEISGARBER RD.  
KNOXVILLE, TN 37919-5213  
865-584-9999  
865-584-5213 (FAX)

ISSUED FOR RECORD DRAWING	08/03/03
Revisions:	Date:

cdp  
cockrill  
design & planning  
503 market street  
knoxville, tn 37902  
v. 865 . 633 . 9058  
f. 865 . 633 . 9059  
www.cockrilldp.com

Drawing Title: BUILDING 77 SECOND FLOOR PLAN - LIGHTING
Approved: Chief, Facility Mgt. Svc. COTR: Daniel B. Snyder III, P.E.
Approved: Chief, Facility & Plant Mgt. Div.

Project Title: James H. Quillen VA Medical Center Clinical Renovations - Bldg. 69/77		
Building Number: 77	Checked by: CHP	Drawn by: JEE
Location: Mountain Home, TN		

Date: 05/12/04
Project No.: 621-03-101
Drawing No.: 77-E2.2
Dwg. ____ of ____

Department of