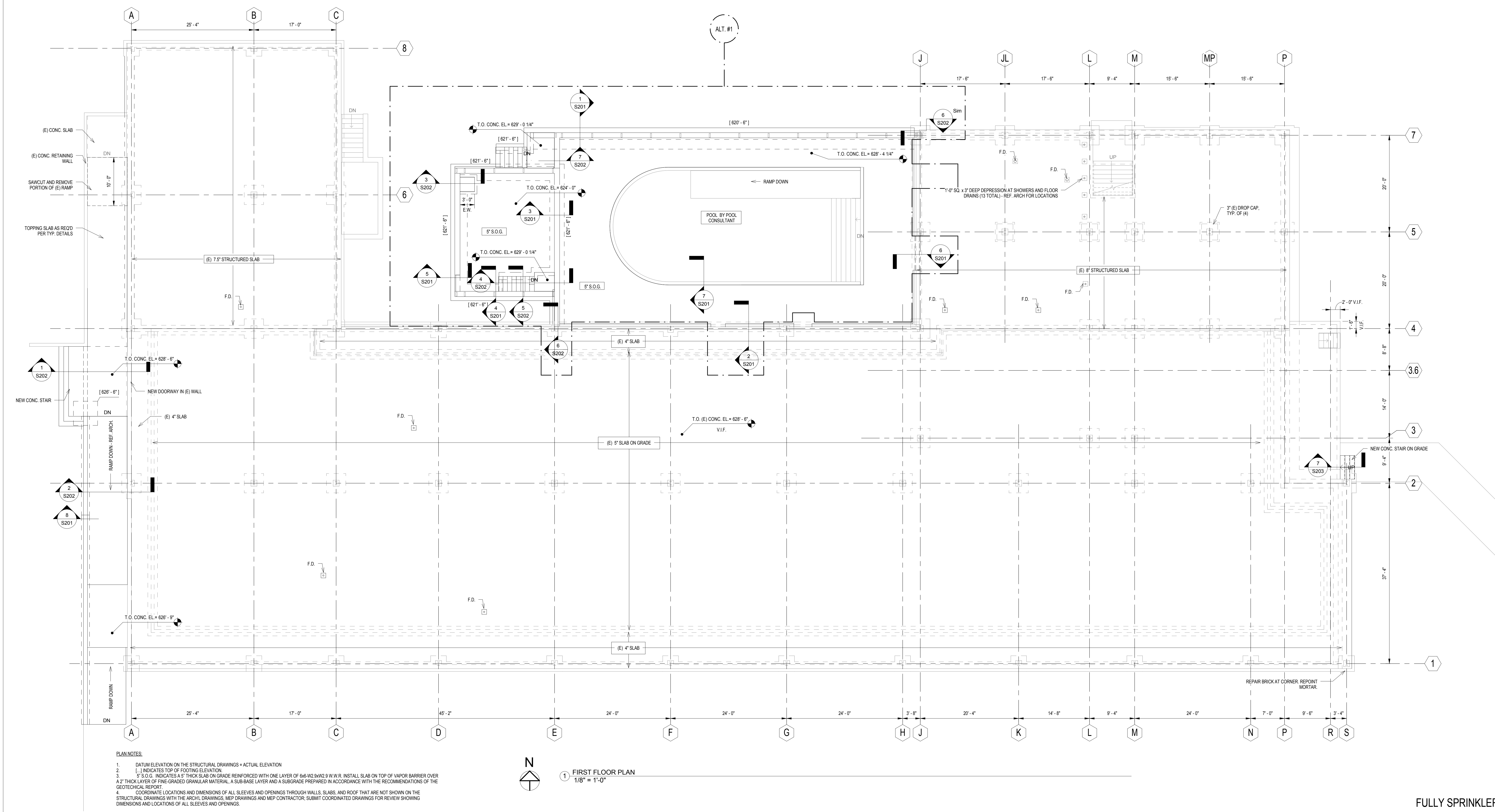



three inches = one foot
one and one half inches = one foot
one inch = one foot
three quarters inch = one foot
one half inch = one foot
three eighths inch = one foot
one quarter inch = one foot
one eighth inch = one foot
one eighth inch = one foot



- PLAN NOTES:
1. DATUM ELEVATION ON THE STRUCTURAL DRAWINGS = ACTUAL ELEVATION
 2. (L) INDICATES TOP OF FOOTING ELEVATION
 3. 5" S.O.G. INDICATES A 5" THICK SLAB ON GRADE REINFORCED WITH ONE LAYER OF 6x6-W2.9xW2.9 W.W.R. INSTALL SLAB ON TOP OF VAPOR BARRIER OVER A 2" THICK LAYER OF FINE-GRADED GRANULAR MATERIAL, A SUB-BASE LAYER AND A SUBGRADE PREPARED IN ACCORDANCE WITH THE RECOMMENDATIONS OF THE GEOTECHNICAL REPORT.
 4. COORDINATE LOCATIONS AND DIMENSIONS OF ALL SLEEVES AND OPENINGS THROUGH WALLS, SLABS, AND ROOF THAT ARE NOT SHOWN ON THE STRUCTURAL DRAWINGS WITH THE ARCHT. DRAWINGS, MEP DRAWINGS AND MEP CONTRACTOR, SUBMIT COORDINATED DRAWINGS FOR REVIEW SHOWING DIMENSIONS AND LOCATIONS OF ALL SLEEVES AND OPENINGS.

1 FIRST FLOOR PLAN
1/8" = 1'-0"

FULLY SPRINKLERED
ISSUED FOR BID

CONSULTANTS:										PROJECT MANAGER:		Project Number 3619	Scale As indicated	Drawing Title FIRST FLOOR PLAN		Project Title BUILDING 69 PM & R RENOVATION		VA Project Number 542-CSI-203		Office of Facilities Management	
Project Manager BRAY MOONEY CONSULTING		Architect ARRAY HEALTHCARE FACILITIES SOLUTIONS	Structural Engineer WZG STRUCTURAL CONSULTING ENGINEERS	MEP/FP Engineer APOGEE CONSULTING GROUP	Civil Engineer GUIDON DESIGN	Fire Protection Consultant HARRINGTON GROUP	Cost Estimator BRAY MOONEY CONSULTING	Aquatic Consultant ATLANTIC AQUATIC ENGINEERING				Approved: Project Director		Location 1400 Black Horse Hill, Coatesville, PA		Building Number 69		Drawing Number			
410 E. 21 STREET CHESTER, PA 19013 Tel: (610) 872-3716		2520 RENAISSANCE BLVD., SUITE 110 KING OF PRUSSIA, PA 19406 Tel: (610) 270-0599	P.O. BOX 24 40 LITTLE ROAD ZIEGLERLE ROAD, PA 19492 Tel: (610) 287-3194	7330 CHAPEL HILL ROAD, SUITE 202 RALEIGH, NC 27606 Tel: (919) 858-7420	2453 N DELAWARE STREET INDIANAPOLIS, IN 46205 Tel: (317) 800-6386	7508 E. INDEPENDENCE BLVD., SUITE 116 CHARLOTTE, NC 28277 Tel: (704) 531-9077	410 E. 21 STREET CHESTER, PA 19013 Tel: (610) 872-3716	1823 DEEP RUN ROAD PIPERSVILLE, PA 18947 Tel: (215) 766-0409						Date 1/22/2014		Checked RAZ	Drawn NEW	S111 Dwg. 8 of 86			
Revisions		Date																		 Department of Veterans Affairs	