

1 2 3 4 5 6 7 8 9 10

A

B

C

D

E

F

G

A

B

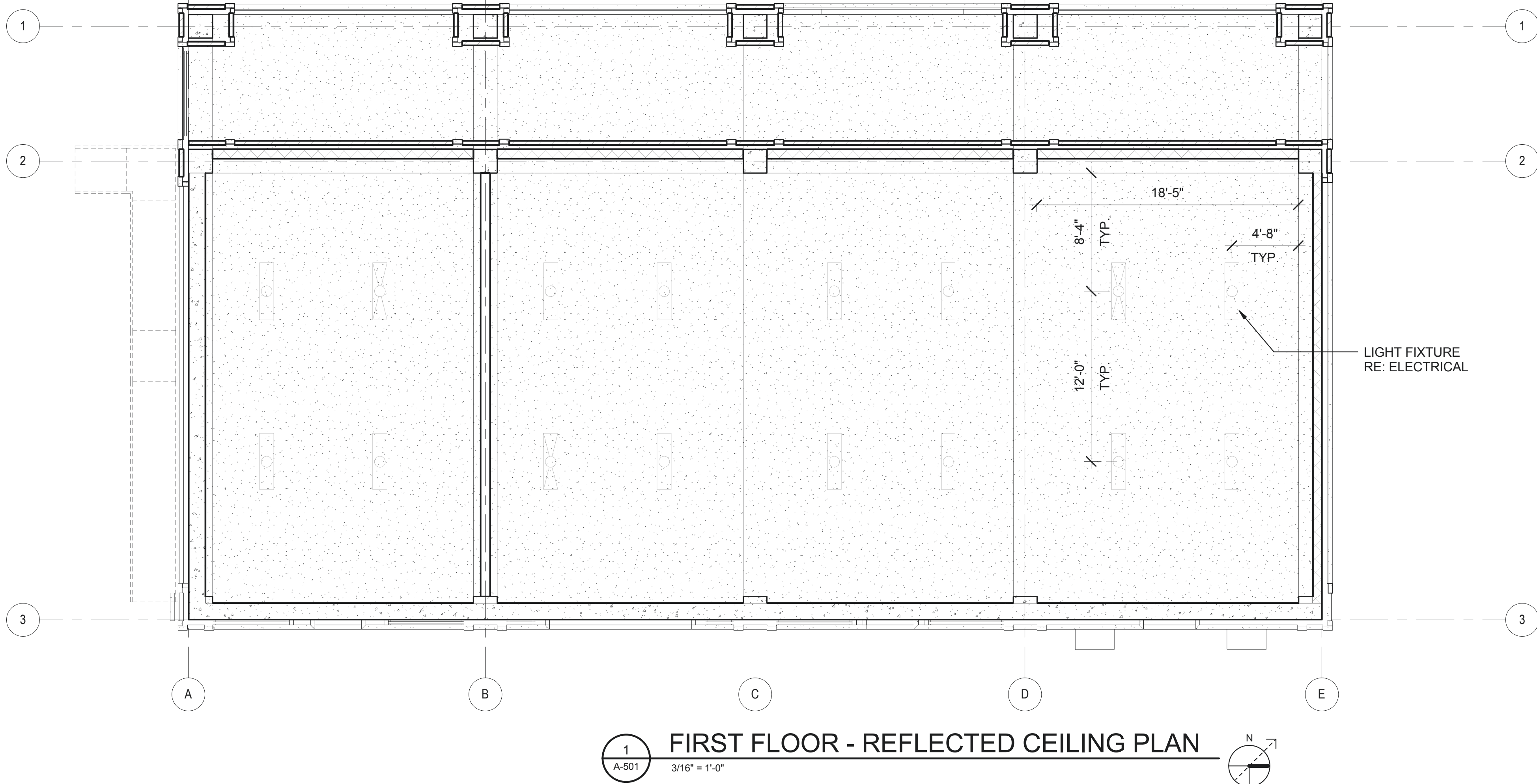
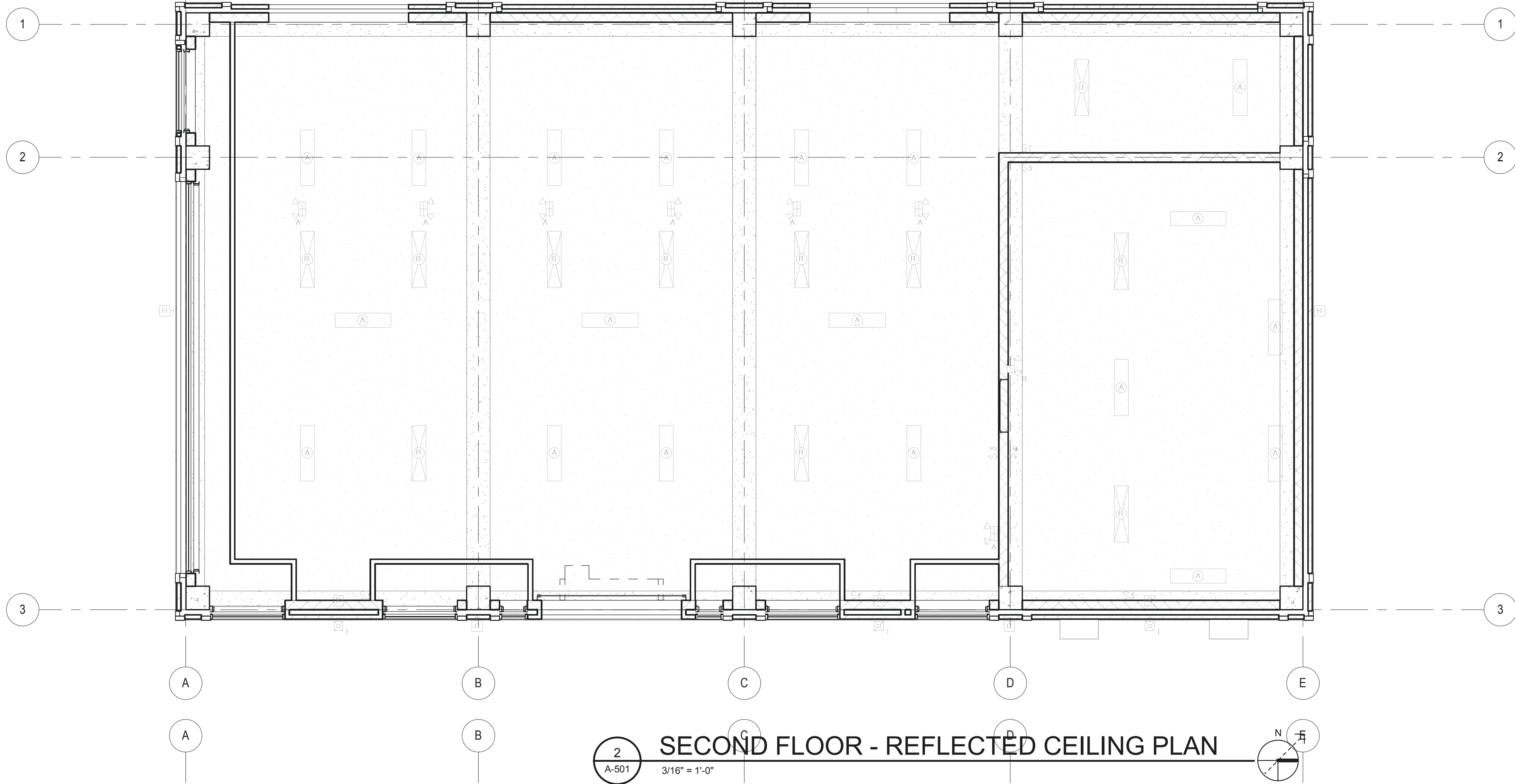
C

D

E

F

G

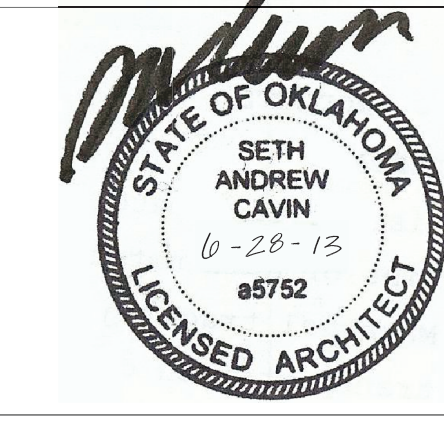


REVISIONS	DATE
100 % Construction Documents	06.28.13
99 % Construction Documents	02.28.13
66 % Construction Documents	11.26.12
33 % Schematic Design Revised	11.02.12
33 % Schematic Design	08.06.12
Revisions:	



Department of Veterans Affairs  
Jack C. Montgomery  
Medical Center  
1011 Honor Height Drive  
Muskogee, Oklahoma 74401

CONSULTANTS:



ARCHITECT / ENGINEERS



APPROVED: President A.F.G.E 2280

APPROVED:

APPROVED:

APPROVED:

APPROVED: Energy Engineer

APPROVED: Safety Manager

APPROVED: Infection Control Nurse

APPROVED: Industrial Hygienist

APPROVED: Medical Center Director

APPROVED: Associate Director

APPROVED: Chief of Staff

APPROVED: Chief of Engineering Service

DRAWING TITLE:

FIRST FLOOR  
REFLECTED CEILING  
PLAN

PROJECT NUMBER  
623-12-101

BUILDING NUMBER  
51

CONTRACT NO:

AUTOCAD FILE NAME:

Project Title

FULL FACILITY STANDBY  
GENERATOR SYSTEM

Designed By

Designer

Drawn By

GAR

Checked By

SCB

Location

JACK C. MONTGOMERY VAMC

Date  
6-28-2013

Scale

DRAWING NO:

A-501

Department of  
Veterans Affairs

1 2 3 4 5 6 7 8 9 10



A

B

C

D

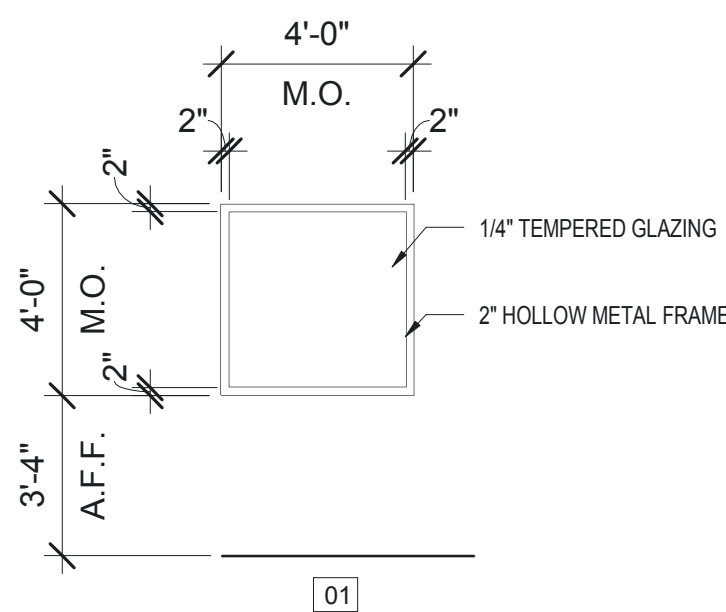
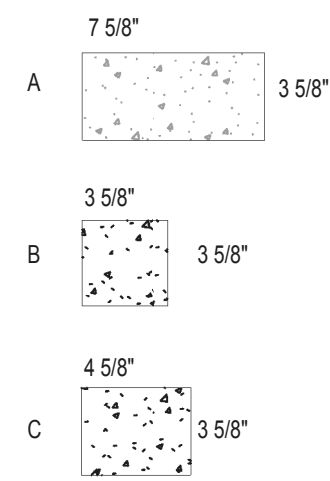
E

F

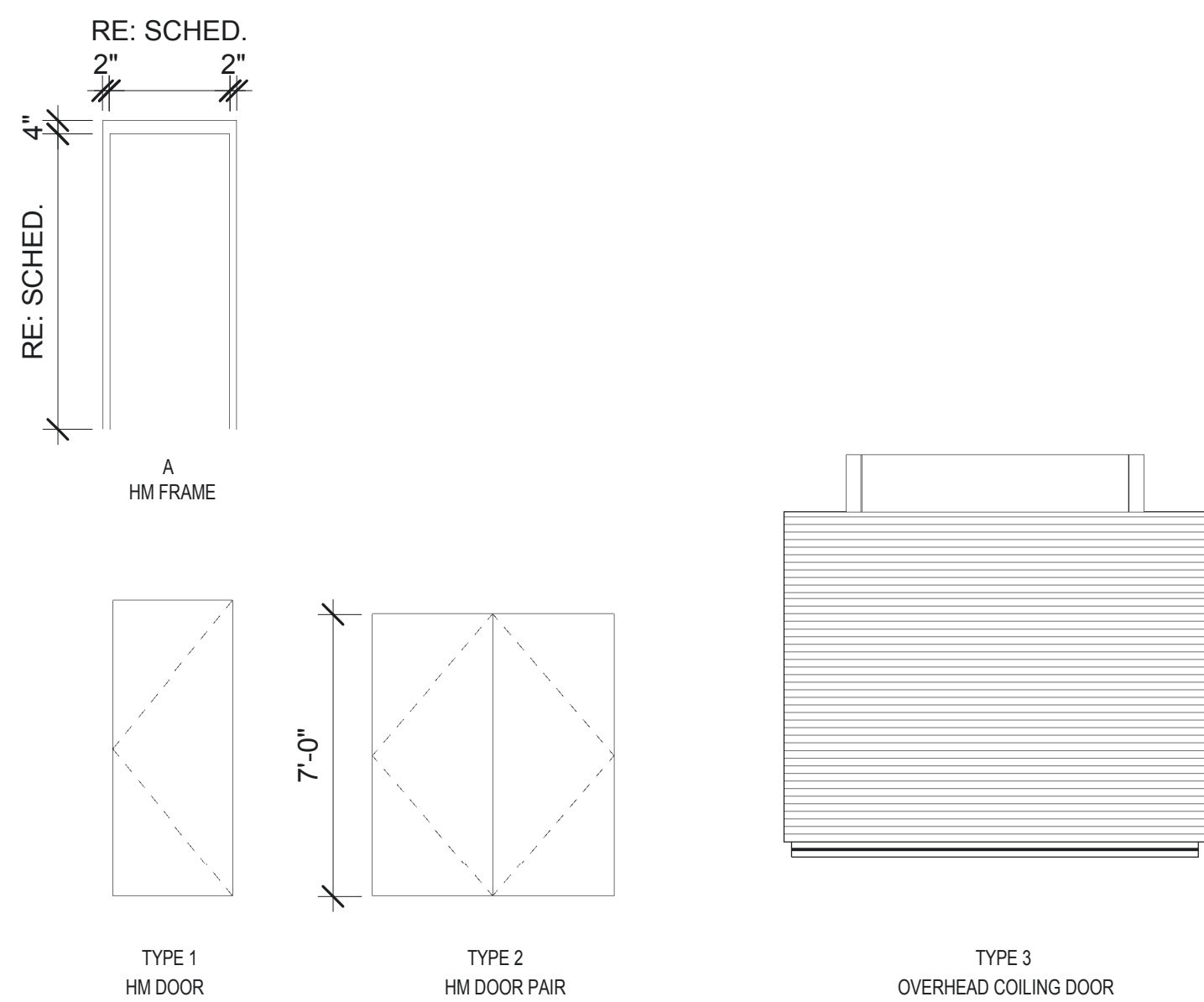
G

DOOR SCHEDULE																
Door Number	Type	DOOR				FRAMES						DETAILS				Hardware
		SIZE		Thickness	Material	Finish	Under Cut	Fire Rating	Type	Material	Finish	Jamb				
		Width	Height									Head	Sill			
101A	2	6'-0"	7'-0"	1 3/4"	HM	P1			1	HM	P1	3/A603	2/A603	1/A603	HW-E6	
104A	2	6'-0"	7'-0"	1 3/4"	HM	P1			1	HM	P1	3/A603	2/A603	1/A603	HW-E6	
201A	1	3'-0"	7'-4"	1 3/4"	HM	P1			1	HM	P1	3/A603	2/A603	1/A603	HW-E1	
201B	3	10'-0"	10'-0"		ALUM				N/A	MTL		7/A603	8/A603	N/A	HW-E5	
201C	1	3'-0"	7'-4"	1 3/4"	HM	P1			1	HM	P1	3/A603	2/A603	1/A603	HW-E6	
202A	1	3'-0"	7'-4"	1 3/4"	HM	P1			1	HM	P1	3/A603	2/A603	1/A603	HW-E6	
202B	1	3'-8"	7'-0"	1 3/4"	HM	P1			1	HM	P1	6/A603	5/A603	4/A603	HW-1	
202C	1	3'-0"	7'-0"	1 3/4"	HM	P1			1	HM	P1	6/A603	5/A603	4/A603	HW-1	

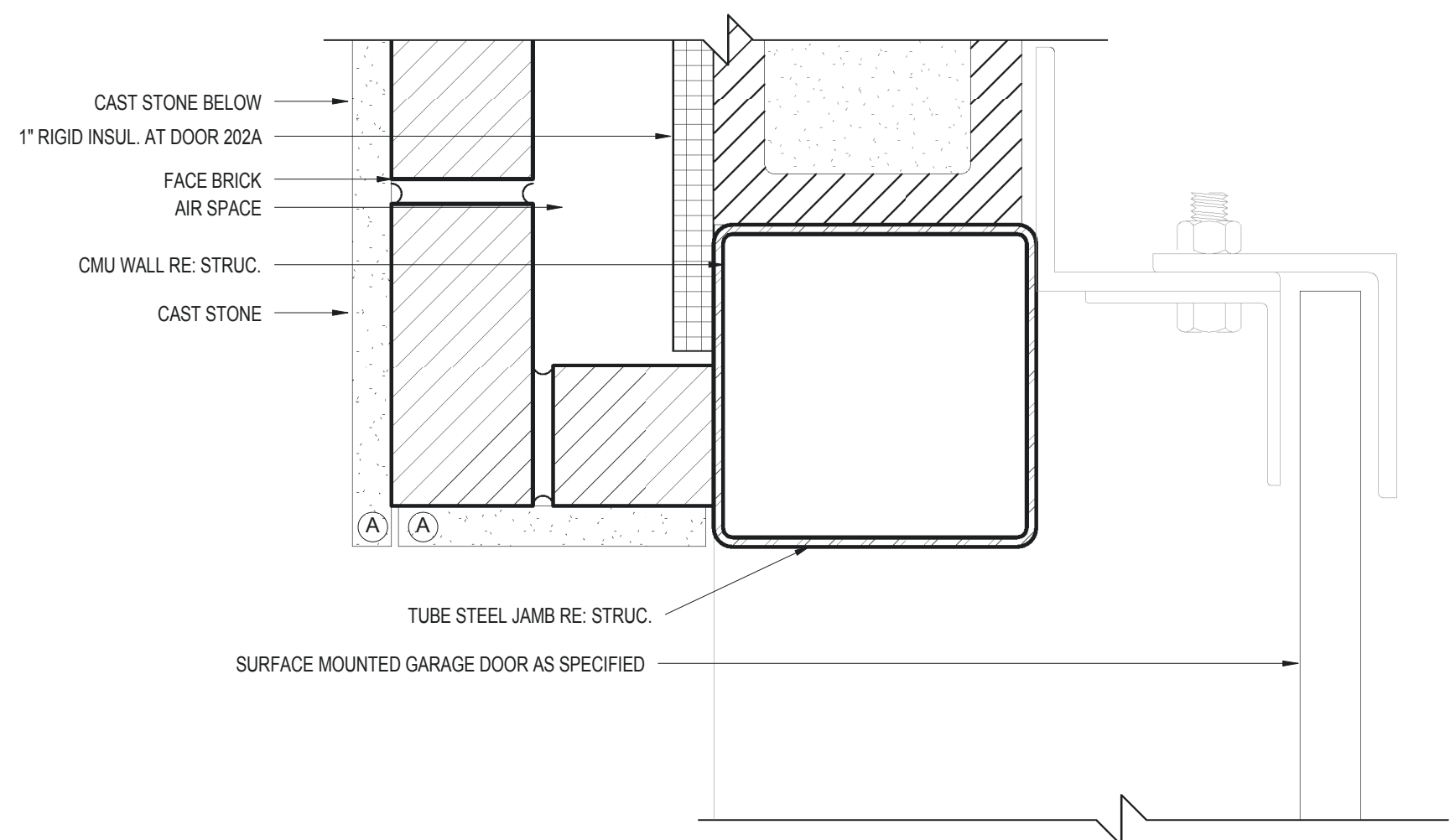
CAST STONE PROFILES



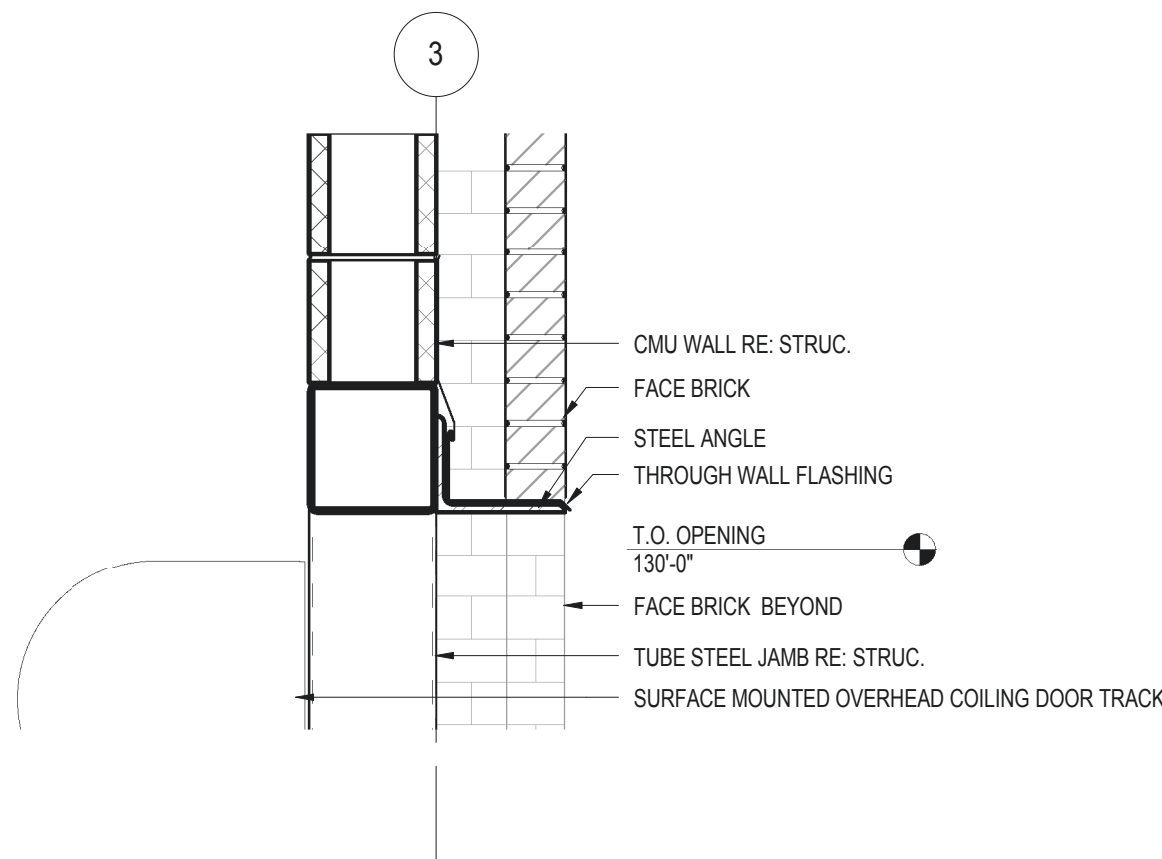
GLAZING TYPES  
1/4" = 1'-0"



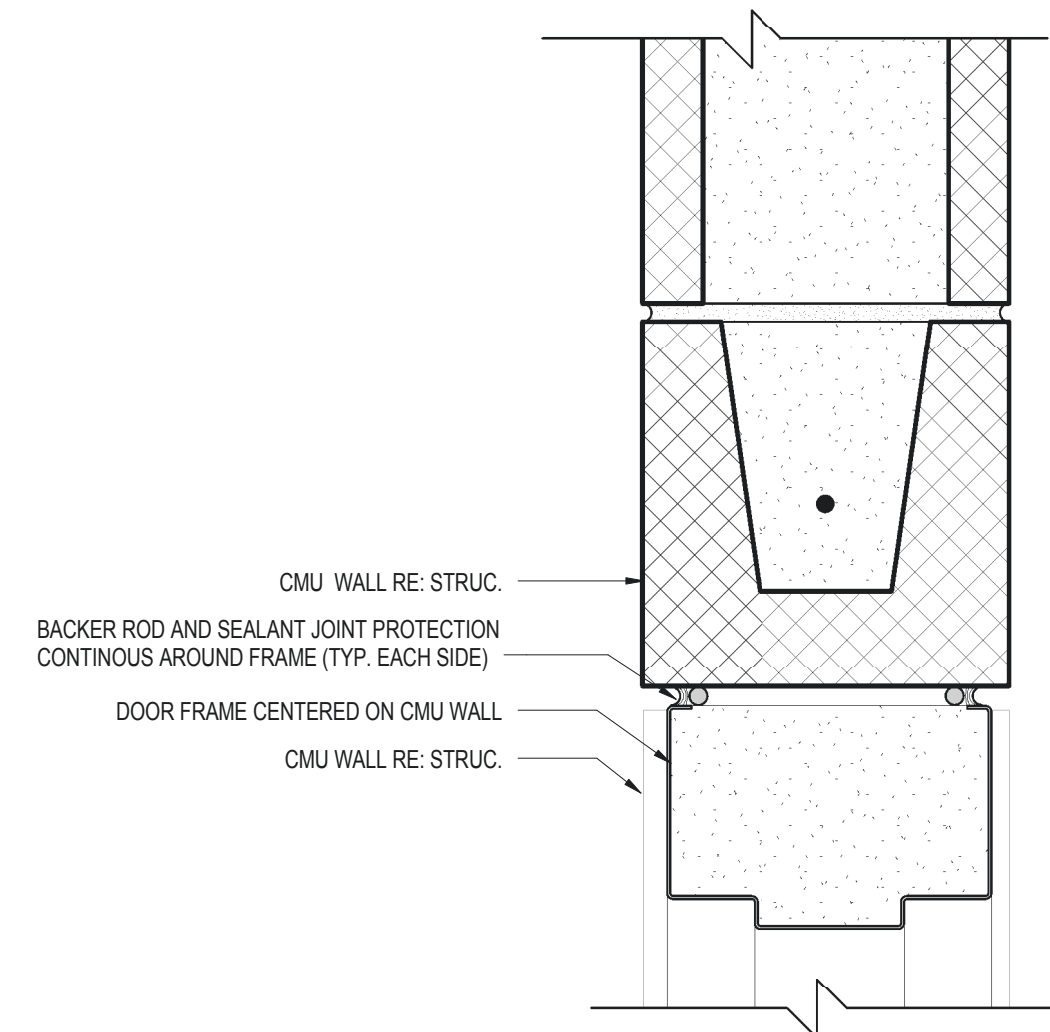
DOOR AND FRAME TYPES  
1/4" = 1'-0"



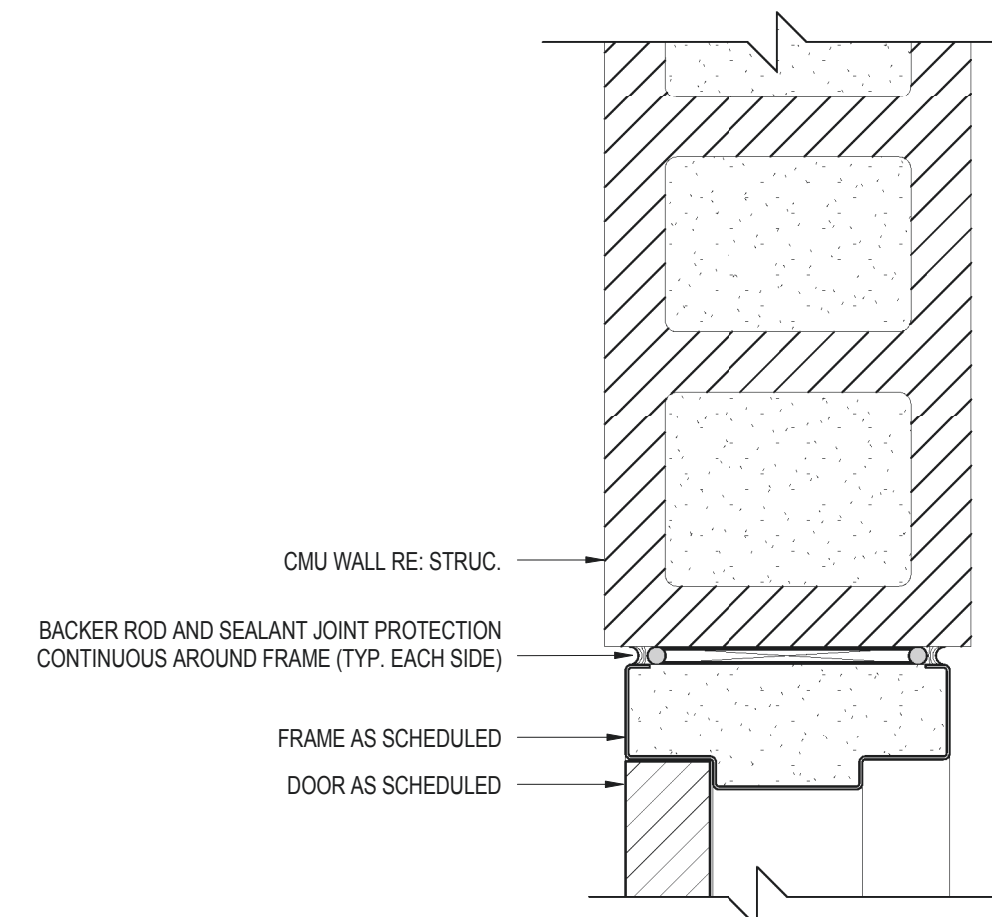
JAMB DETAIL EXTERIOR  
3\"/>



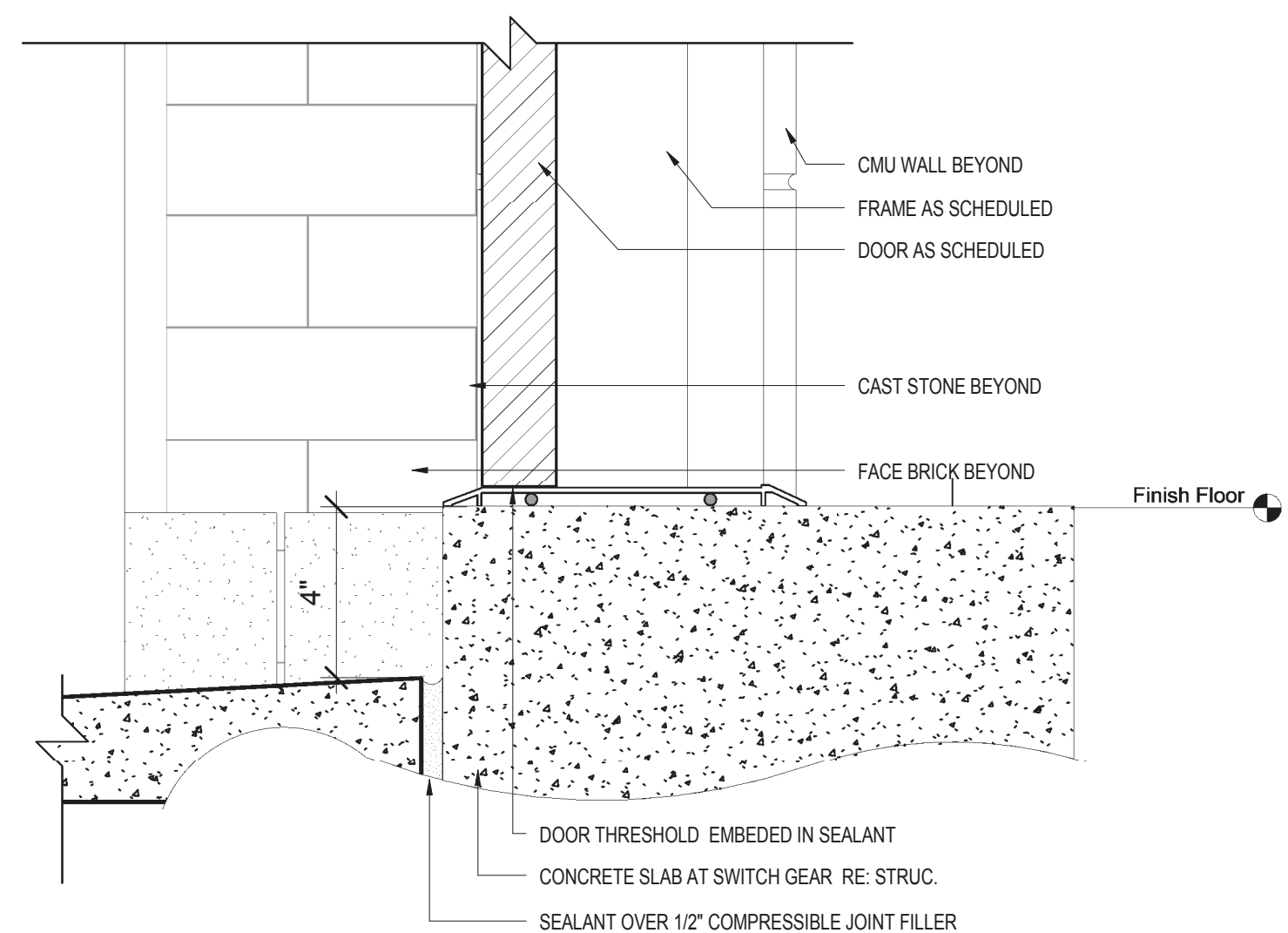
DETAIL - AT OVERHEAD DOOR  
1\"/>



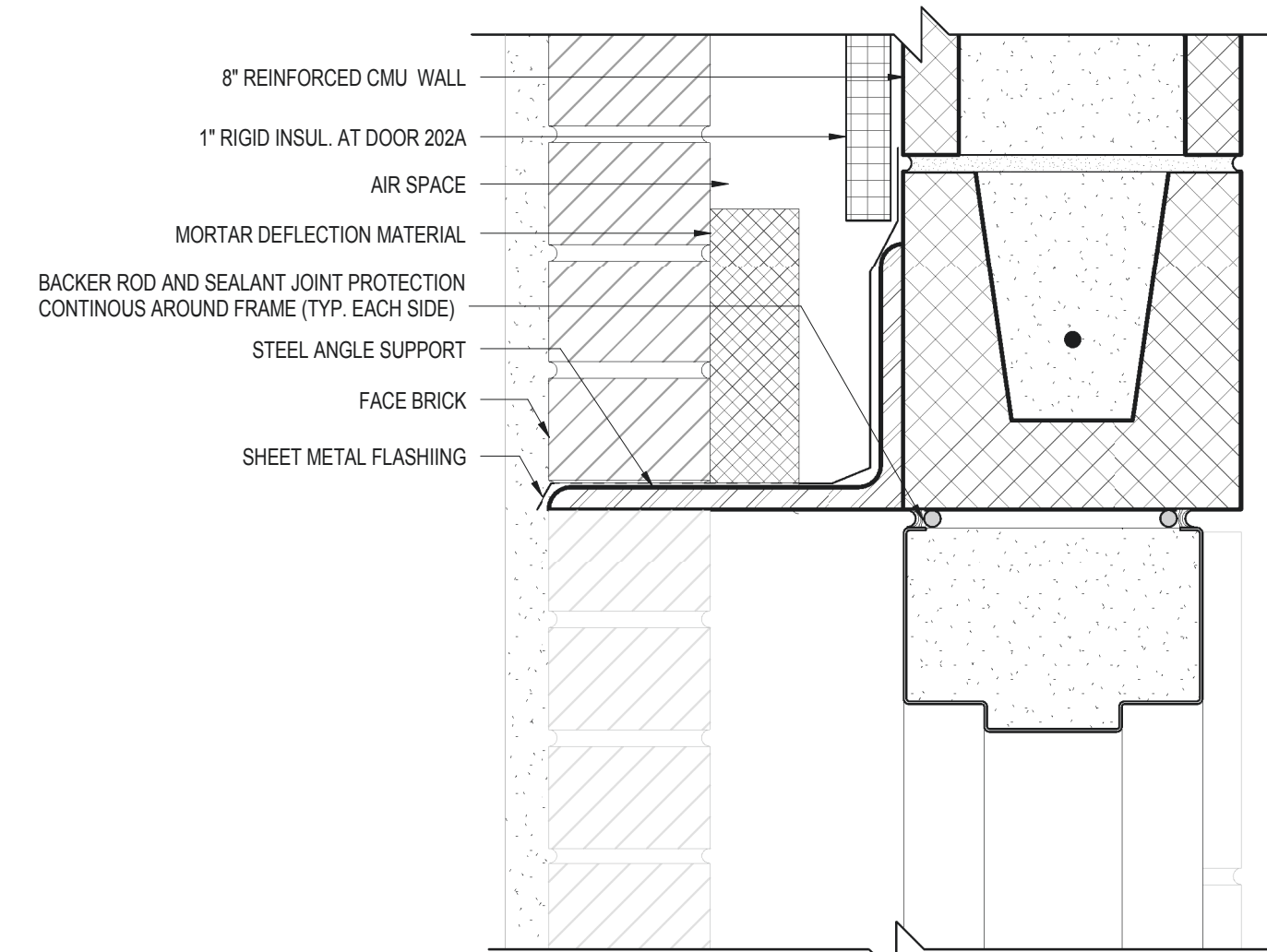
HEAD DETAIL - INTERIOR  
3\"/>



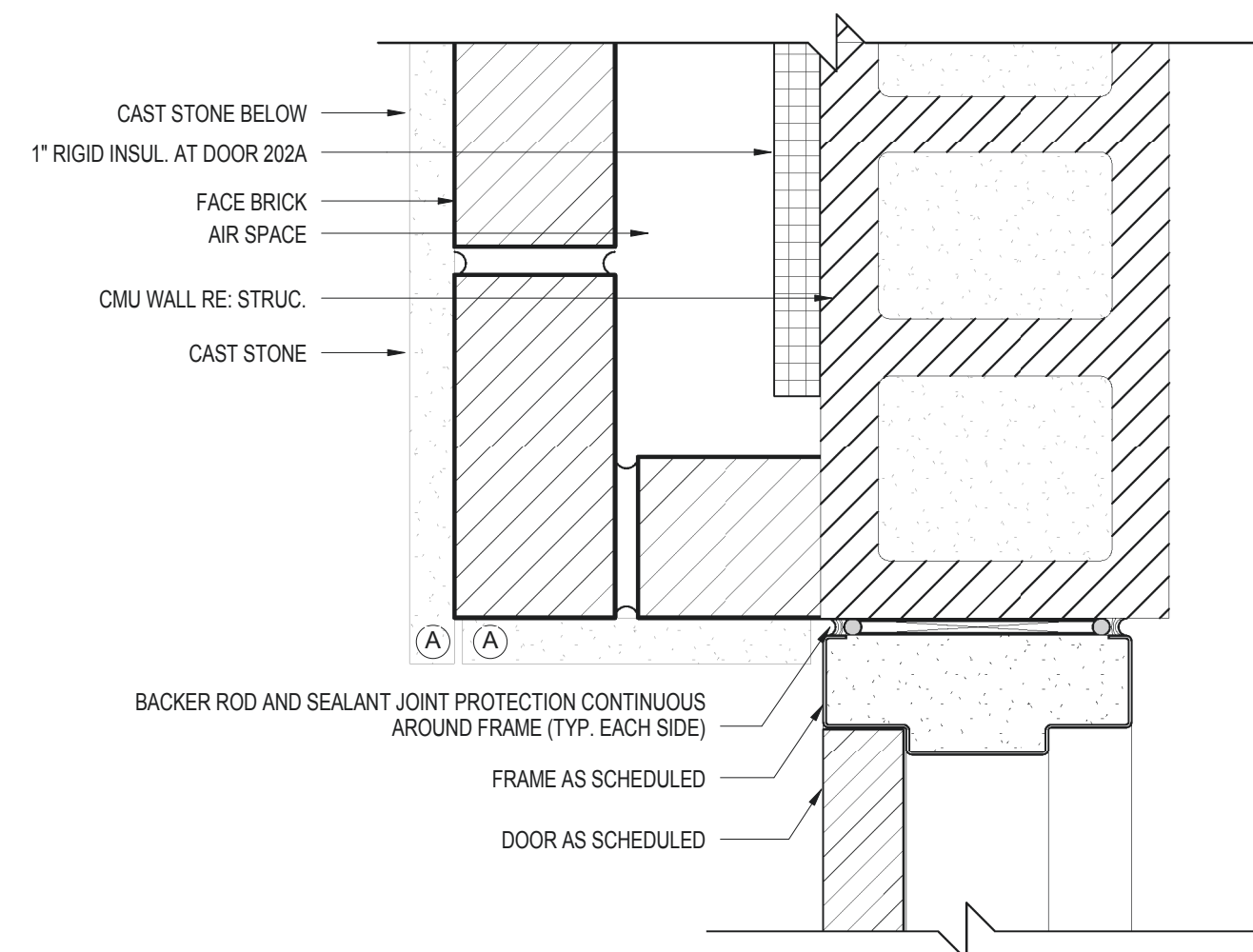
JAMB DETAIL - INTERIOR  
3\"/>



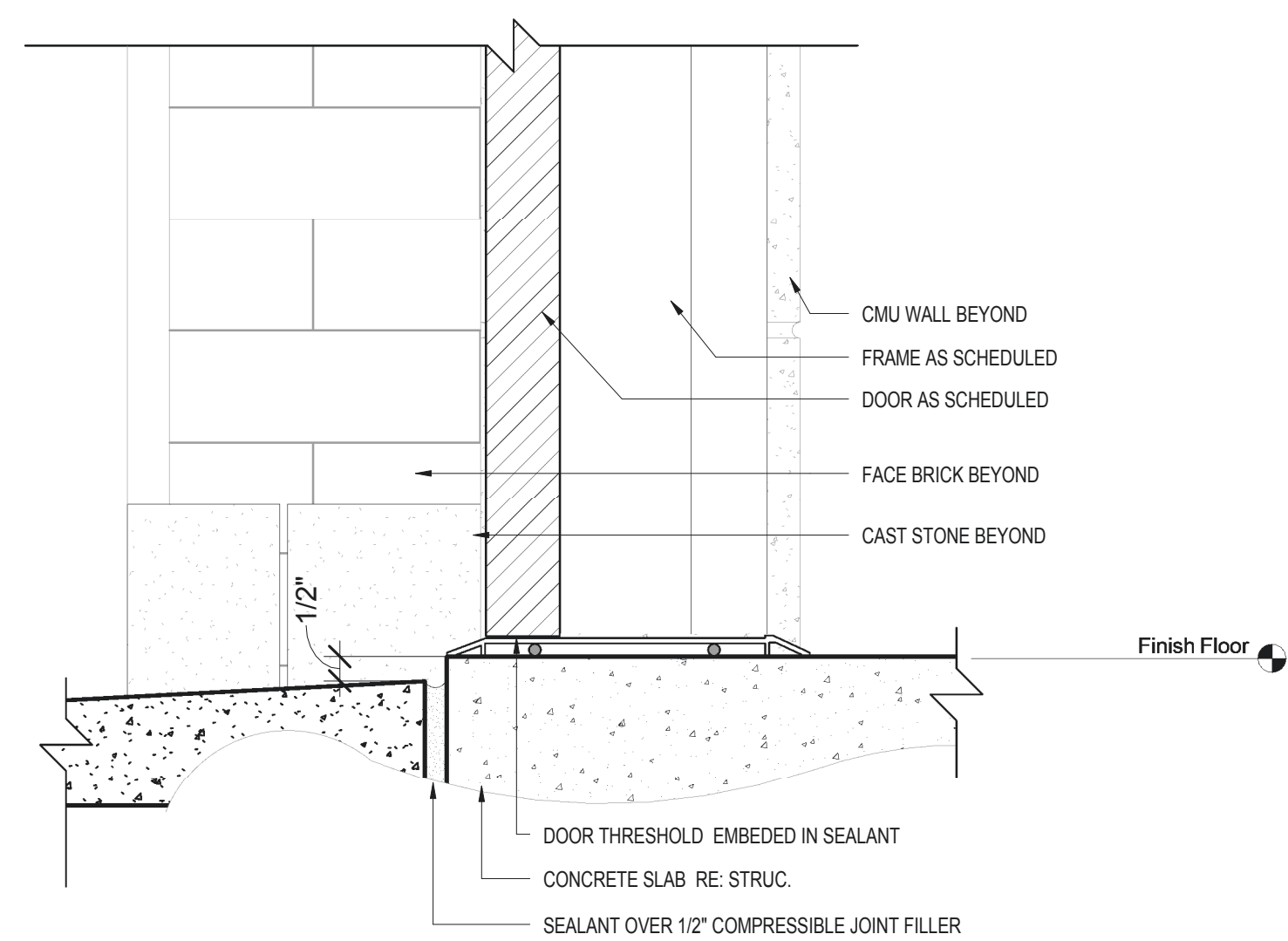
SILL DETAIL AT SWITCH GEAR DOOR 202A  
3\"/>



HEAD DETAIL EXTERIOR  
3\"/>



JAMB DETAIL EXTERIOR  
3\"/>

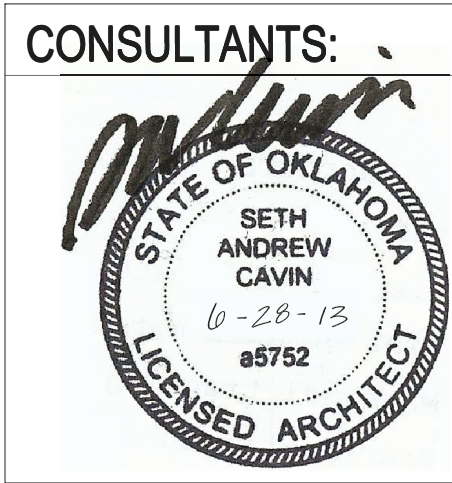


SILL DETAIL - EXTERIOR  
3\"/>

REVISIONS	DATE
100 % Construction Documents	06.28.13
99 % Construction Documents	02.28.13
66 % Construction Documents	11.26.12
33 % Schematic Design Revised	11.02.12
33 % Schematic Design	08.06.12
Revisions:	



Department of Veterans Affairs  
Jack C. Montgomery  
Medical Center  
1011 Honor Height Drive  
Muskogee, Oklahoma 74401



APPROVED: President A.F.G.E 2250
APPROVED:
APPROVED:
APPROVED:

APPROVED: Energy Engineer
APPROVED: Safety Manager
APPROVED: Infection Control Nurse
APPROVED: Industrial Hygienist

APPROVED: Medical Center Director
APPROVED: Associate Director
APPROVED: Chief of Staff
APPROVED: Chief of Engineering Service

DRAWING TITLE: DOOR SCHEDULE AND DETAILS	
PROJECT NUMBER: 623-12-101	CONTRACT NO.:
BUILDING NUMBER: 51	AUTOCAD FILE NAME:

Project Title FULL FACILITY STANDBY GENERATOR SYSTEM		
Designed By Designer	Drawn By GAR	Checked By SCB
Location JACK C. MONTGOMERY VAMC		

Date 6-28-2013
Scale
DRAWING NO: A-603

Department of  
Veterans Affairs