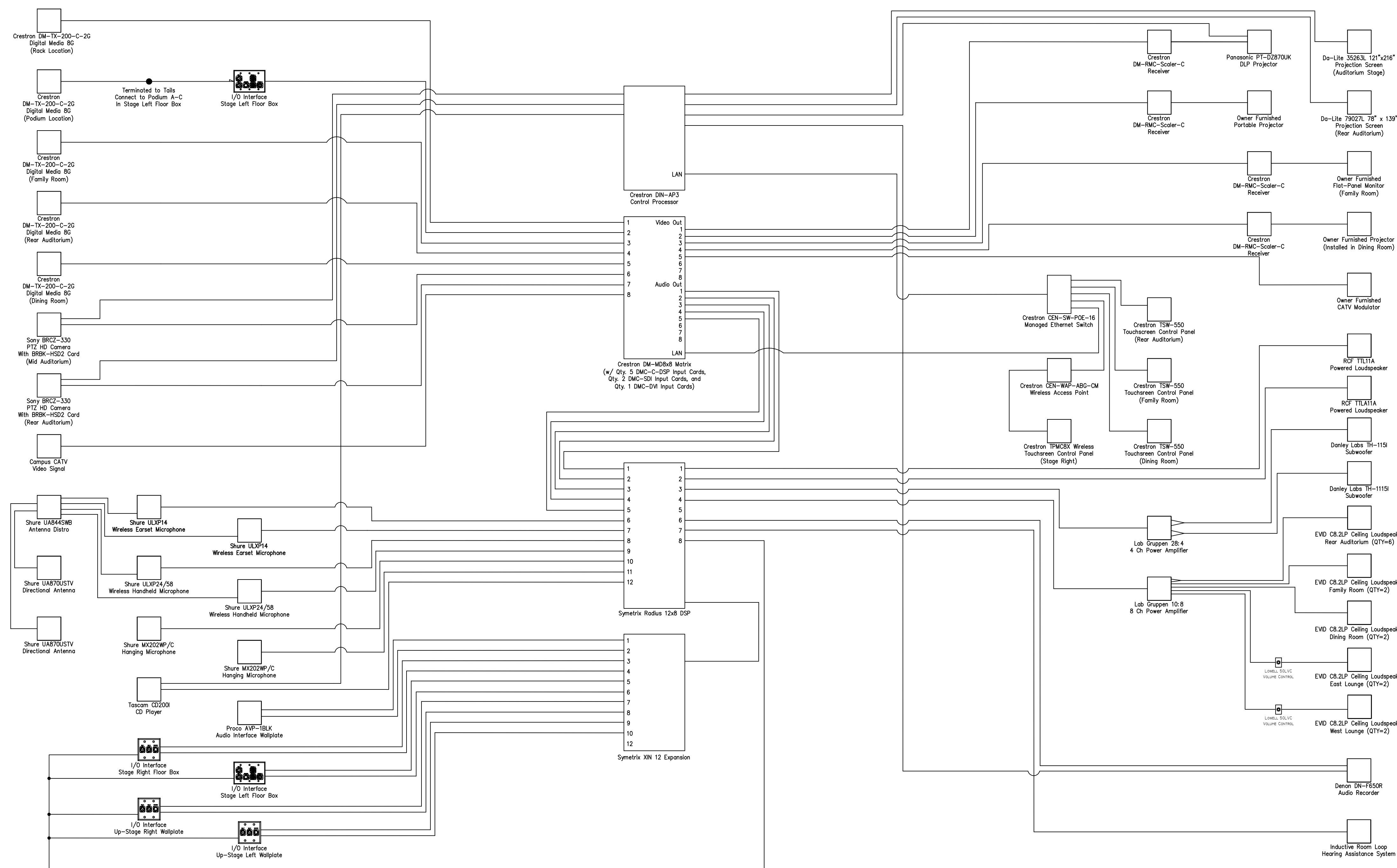


AV Line Diagram



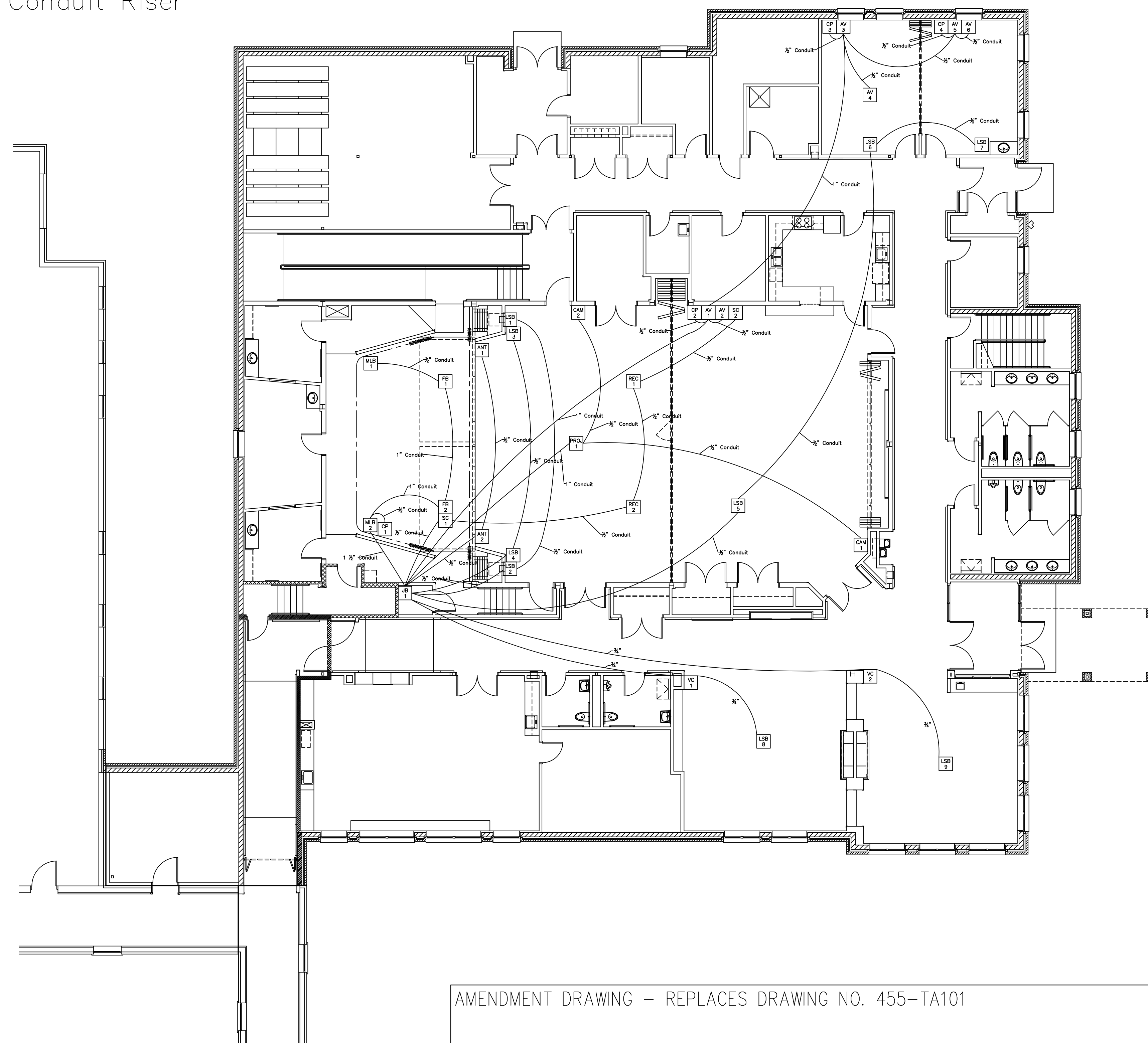
Conduit Riser Box Schedule

Note: All Conduit, Box Sizes, and Locations to be verified with the Electrical Contractor by Audio Contractor					
Box LA	Box Size	Box Location	Box Purpose	Provided By	Power Requirements
JB1	12"X12"X3"	Inside closet off stage right 36" AFF according to drawing	Equipment Rack Pull Box	Electrical Contractor	See Note #1 below
FB1	Floor Box	Flush Mounted in Stage Floor-Stage Left according to drawing	Mic/Monitor/Podium Connections	Audio Contractor	See Note #2 below
FB2	Floor Box	Flush Mounted in Stage Floor-Stage Right according to drawing	Mic/Monitor Connections	Audio Contractor	See Note #2 below
MLB1	2 Gang	Stage Left at receptacle height according to drawing	Mic/Monitor Connections	Electrical Contractor	See Note #1 below
MLB2	2 Gang	Stage Right at receptacle height according to drawing	Mic/Monitor Connections	Electrical Contractor	See Note #1 below
CP1	Provided by Audio Contractor	Flush Mounted 48" AFF in Stage Right Wall according to drawing	Touch Panel Docking Station	Audio Contractor	
CP2	1 Gang-Horizontally Mounted	Rear Auditorium 48" AFF according to drawing	Touch Panel System Controller	Electrical Contractor	
CP3	1 Gang-Horizontally Mounted	Dining Room 48" AFF according to drawing	Touch Panel System Controller	Electrical Contractor	
CP4	1 Gang-Horizontally Mounted	Family Room 48" AFF according to drawing	Touch Panel System Controller	Electrical Contractor	
LSB1	1 Gang	Stage Left Loudspeaker location in shelf according to drawing	Main Loudspeaker Pullbox	Electrical Contractor	See Note #1 below
LSB2	1 Gang	Stage Right Loudspeaker location in shelf according to drawing	Main Loudspeaker Pullbox	Electrical Contractor	See Note #1 below
LSB3	1 Gang	Stage Left Subwoofer Location 12" AFF according to drawing	Subwoofer Pullbox	Electrical Contractor	
LSB4	1 Gang	Stage Right Subwoofer Location 12" AFF according to drawing	Subwoofer Pullbox	Electrical Contractor	
LSB5	Stub	Rear Auditorium-Stub above drop tile ceiling according to drawing	Ceiling Loudspeaker feed	Electrical Contractor	
LSB6	Stub	Dining Room-Stub above drop tile ceiling according to drawing	Ceiling Loudspeaker feed	Electrical Contractor	
LSB7	Stub	Family Room-Stub above drop tile ceiling according to drawing	Ceiling Loudspeaker feed	Electrical Contractor	
LSB8	Stub	West Lounge-Stub above drop tile ceiling according to drawing	Ceiling Loudspeaker feed	Electrical Contractor	
LSB9	Stub	East Lounge-Stub above drop tile ceiling according to drawing	Ceiling Loudspeaker feed	Electrical Contractor	
AV1	2 Gang	Rear Auditorium-Switch Height according to drawing	AV I/O Panel	Electrical Contractor	
AV2	2 Gang	Rear Auditorium-Receptacle Height according to drawing	Portable Projector Output	Electrical Contractor	See Note #1 below
AV3	2 Gang	Dining Room-Switch Height according to drawing	AV I/O Panel	Electrical Contractor	
AV4	2 Gang	Dining Room-Above drop tile ceiling according to drawing	Installed Projector Output	Electrical Contractor	See Note #1 below
AV5	2 Gang	Family Room-Switch Height according to drawing	AV I/O Panel	Electrical Contractor	
AV6	2 Gang	Family Room-Receptacle Height according to drawing	Flat Panel Output	Electrical Contractor	See Note #1 below
SC1	1 Gang	Auditorium-Main Projection screen near ceiling according to drawing	Projection Screen	Electrical Contractor	See Note #3 below
SC2	1 Gang	Rear Auditorium-Rear Projection Screen near ceiling according to drawing	Projection Screen	Electrical Contractor	See Note #3 below
PROJ1	2 Gang	Auditorium-Above drop tile ceiling according to drawing	Projector Connections	Electrical Contractor	See Note #1 below
CAM1	1 Gang	Rear Auditorium 108" AFF according to drawing	Camera Connections	Electrical Contractor	
CAM2	1 Gang	Auditorium 108" AFF according to drawing	Camera Connections	Electrical Contractor	
REC1	1 Gang	Auditorium-Flush Mounted in drop tile ceiling according to drawing	Recording Microphone	Electrical Contractor	
REC2	1 Gang	Auditorium-Flush Mounted in drop tile ceiling according to drawing	Recording Microphone	Electrical Contractor	
ANT1	1 Gang	Upstage Left 216" AFF according to drawing	Wireless Microphone Antenna	Electrical Contractor	
ANT2	1 Gang	Upstage Right 216" AFF according to drawing	Wireless Microphone Antenna	Electrical Contractor	

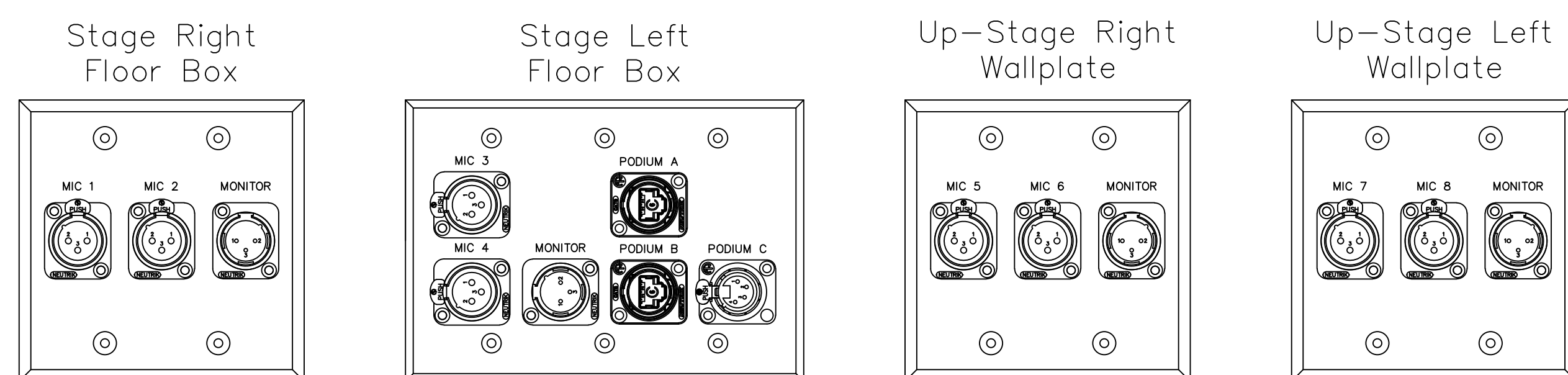
Power Requirement Notes:

- #1 120VAC 20A Dedicated Circuit with Isolated Technical Ground Terminated To Duplex Receptacle Adjacent to JB1, MLB1, MLB2, LSB1, LSB2, AV2, AV4, AV6, SC1, SC2, PROJ1
- #2 120VAC 20A Dedicated Circuit with Isolated Technical Ground Terminated To Duplex Receptacle Inside of FB1, FB2
- #3 120VAC 20A Dedicated Circuit with Isolated Technical Ground Terminated To Duplex Receptacle Adjacent to SC1, SC2

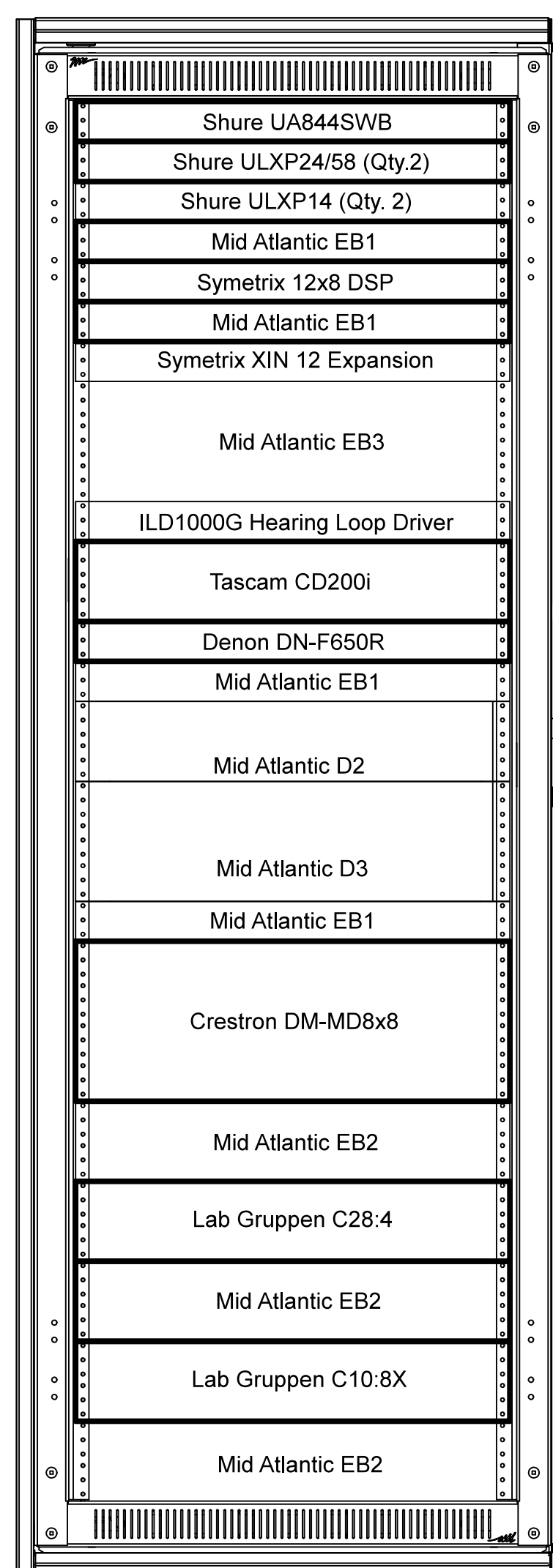
AV Conduit Riser



Custom Plate Layouts



Equipment Rack Layout



ARCHITECT/ENGINEERS:

Potter Lawson

Drawing Title

AUDIO/VISUAL SYSTEMS

Approved: Project Director

Project Title

CONSTRUCT RECREATION THERAPY
BUILDING, VA MEDICAL CENTER

Location

TOMAH, WISCONSIN

Date

26 May 2014

Checked

Drawn

Project Number

1676-323

Building Number

455

Drawing Number

455-TA101-R1

Dwg.1

1 of 1

Office of
Construction and
Facilities
Management

Department of
Veterans Affairs