

NOTES

1. REFER TO SPECIFICATION SECTION 010000 FOR REQUIREMENTS REGARDING PRE-CONSTRUCTION INVESTIGATION PRIOR TO COMMENCEMENT OF WORK.

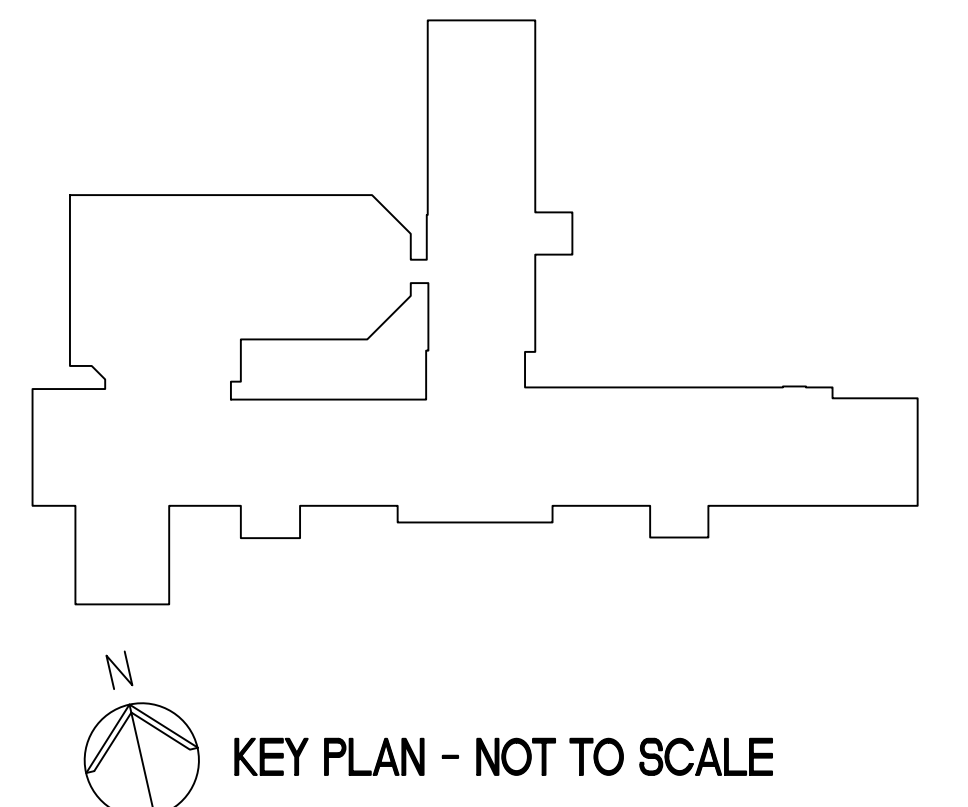
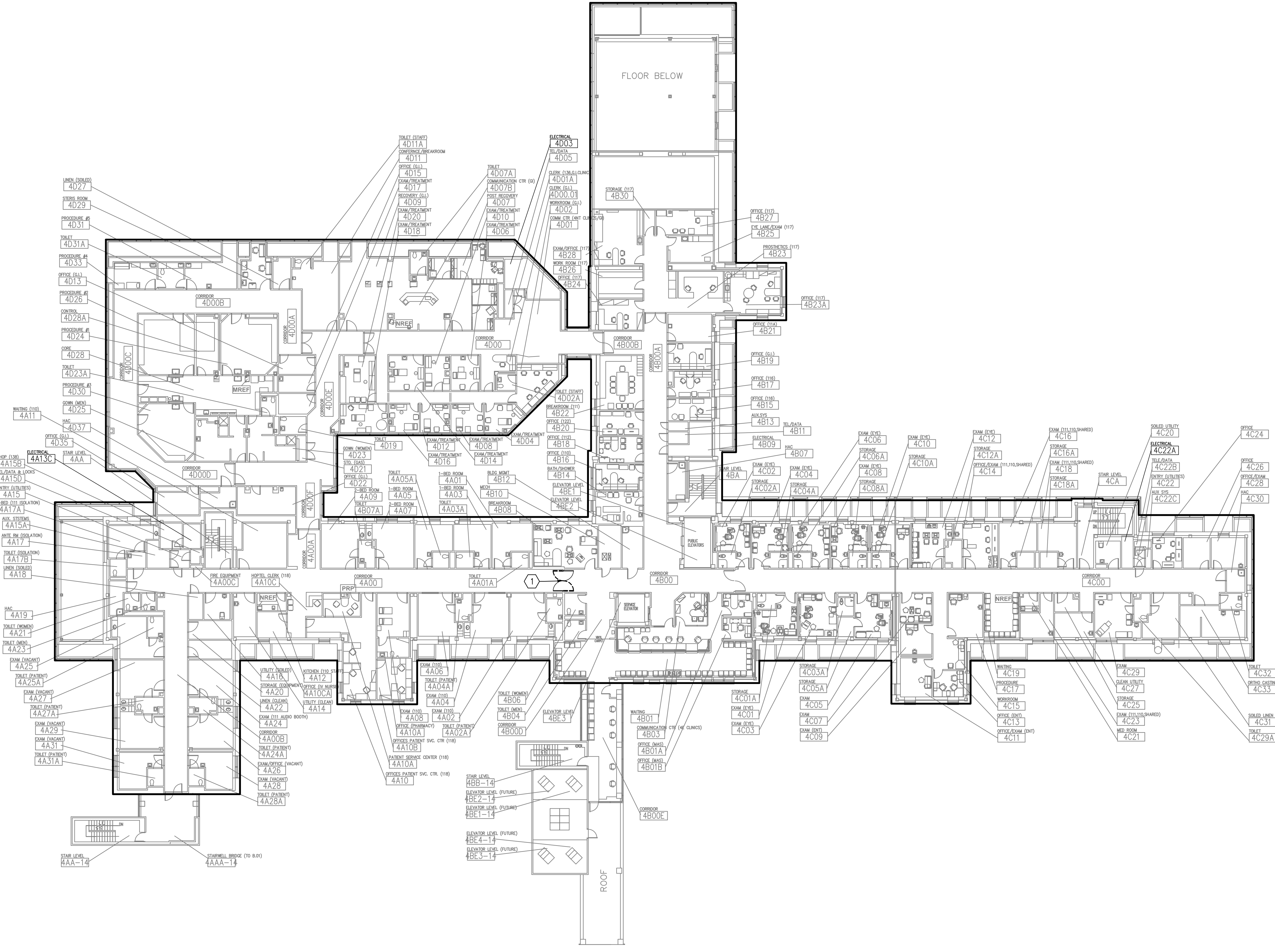
KEYED NOTES

1 EXISTING MEDICAL GAS PANEL/VALVE BOX AND DOOR COORDINATION TO BE COMPLETED. PROVIDE NEW DOORS, FRAMES, HARDWARE, AND RELOCATE DOOR CLOSERS (INCLUDING POWER AND HOLD OPENS WITH FIRE ALARM WIRING) TO MATCH EXISTING CONDITIONS WITH OPPOSITE SWINGS.

LEGEND

AREA APPLIED TO THIS PORTION OF PROJECT

three inches = one foot  
one and one half inches = one foot  
one inch = one foot  
three quarters inch = one foot  
one half inch = one foot  
one quarter inch = one foot  
one eighth inch = one foot



F1 FLOOR PLAN  
1/16" = 1'-0"

FULLY SPRINKLERED  
BID DOCUMENTS  
FOR CONSTRUCTION

AMENDMENT #3 Revisions		5/20/14 Date		ARCHITECT/ENGINEERS: <b>PARADIGM</b> ENGINEERS AND CONSTRUCTORS 200 Envoy Circle #201, Louisville KY 40299 - PH: 502.339.8511 - www.paradigmusa.com		Drawing Title: FIRE BARRIER PLAN - FOURTH FLOOR BUILDING 1 Approved Project Director		Project Title: FIRE SAFETY UPGRADES Location: GEORGE E WAHLEN VAMC 500 Foothill Dr. SALT LAKE CITY, UT Date: 12-13-2013 Checked: KLP Drawn: JDM		Project Number: 660-14-104 Building Number: 1 Drawing Number: 1.AE104		Office of Construction and Facilities Management Department of Veterans Affairs	
---------------------------	--	-----------------	--	--	--	---	--	---	--	--	--	--	--