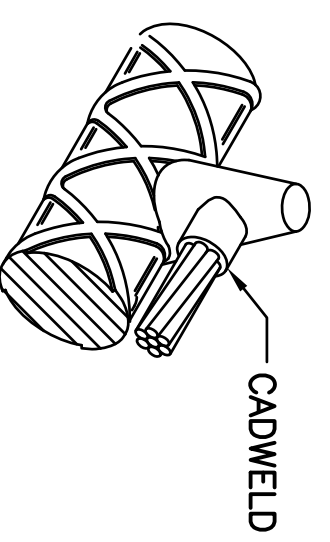
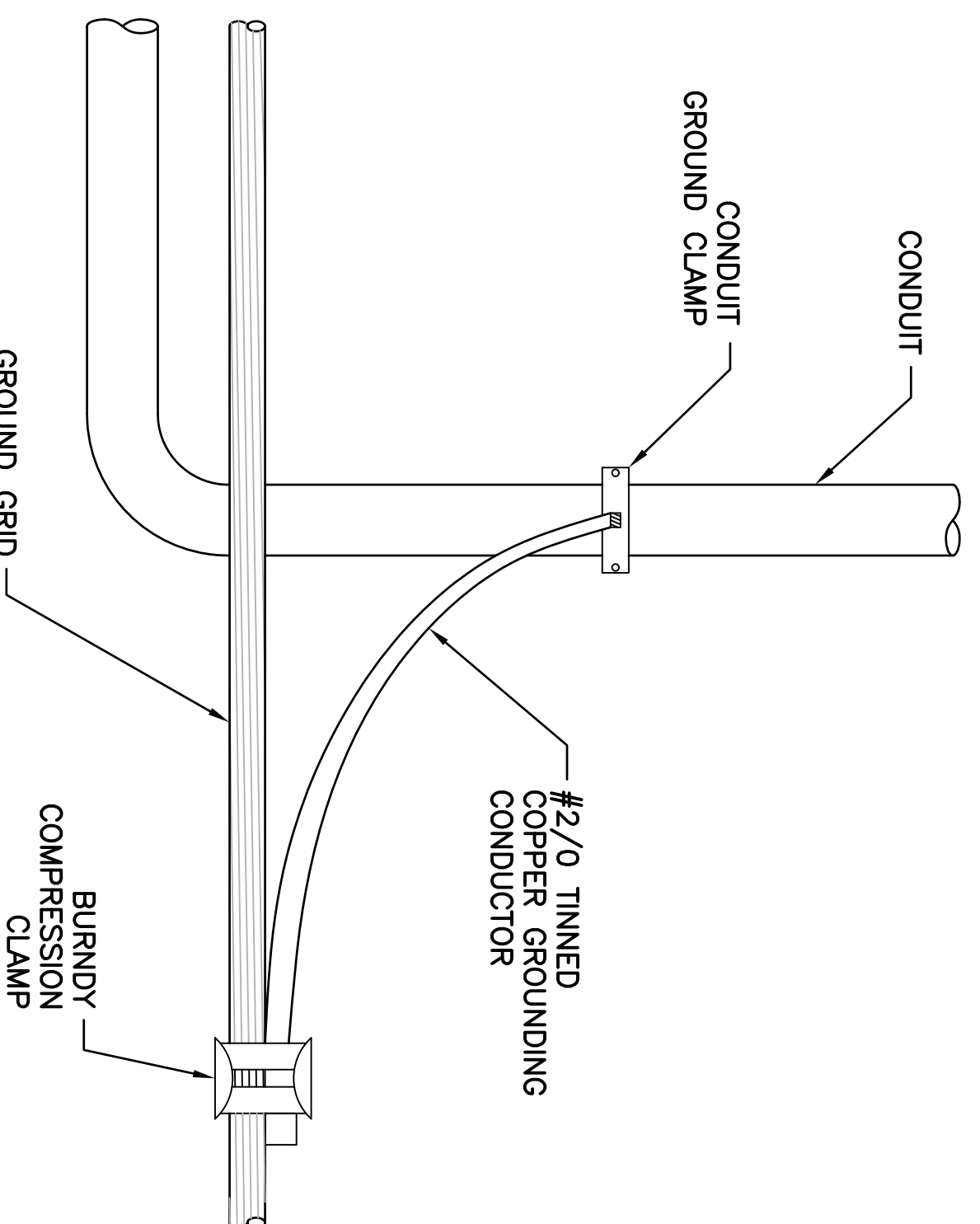


**1 TYPICAL CONDUIT STUB-UP THROUGH SLAB**  
SCALE: NTS

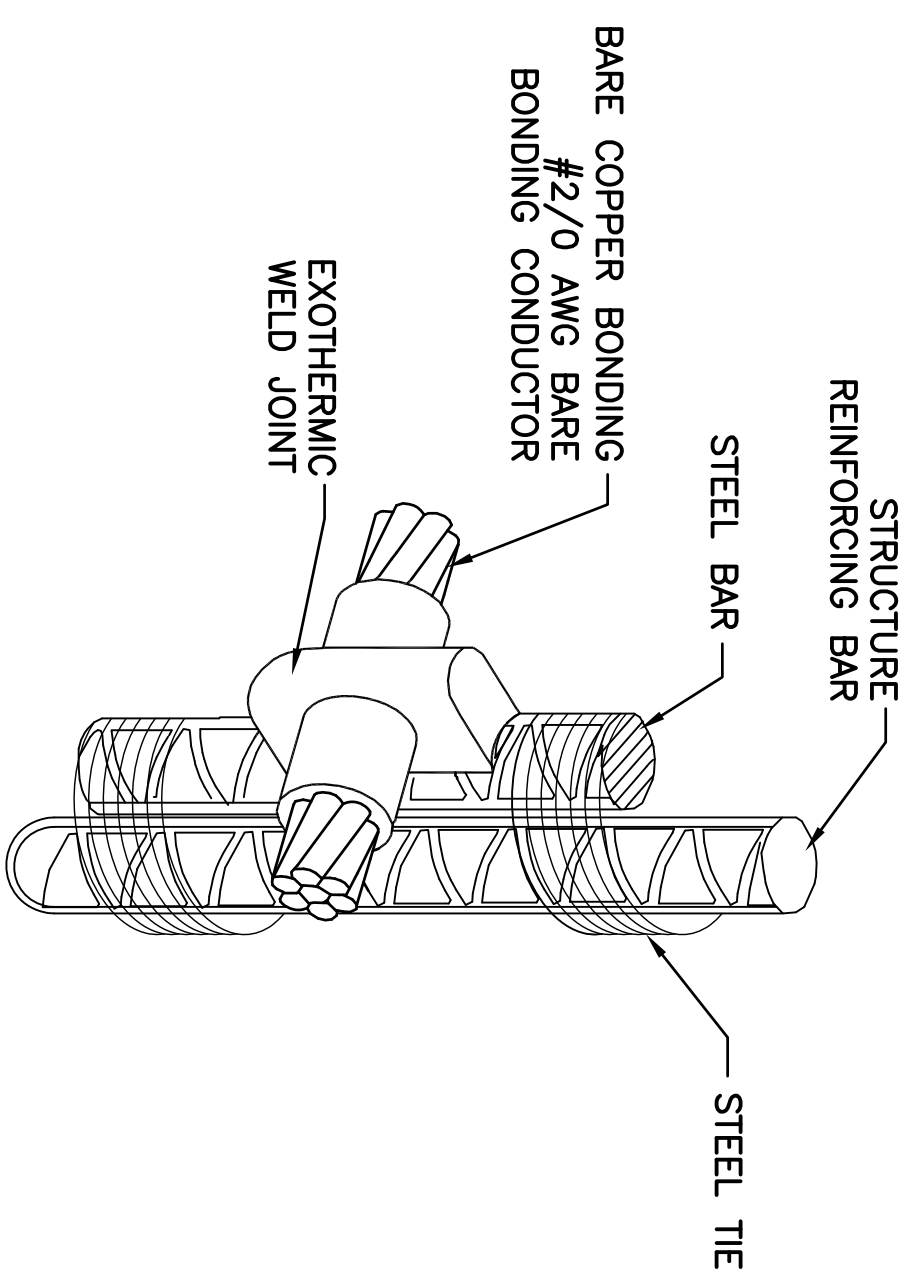


WHEN POSSIBLE, CONNECTIONS SHOULD BE MADE AT THE END OF THE REBAR.

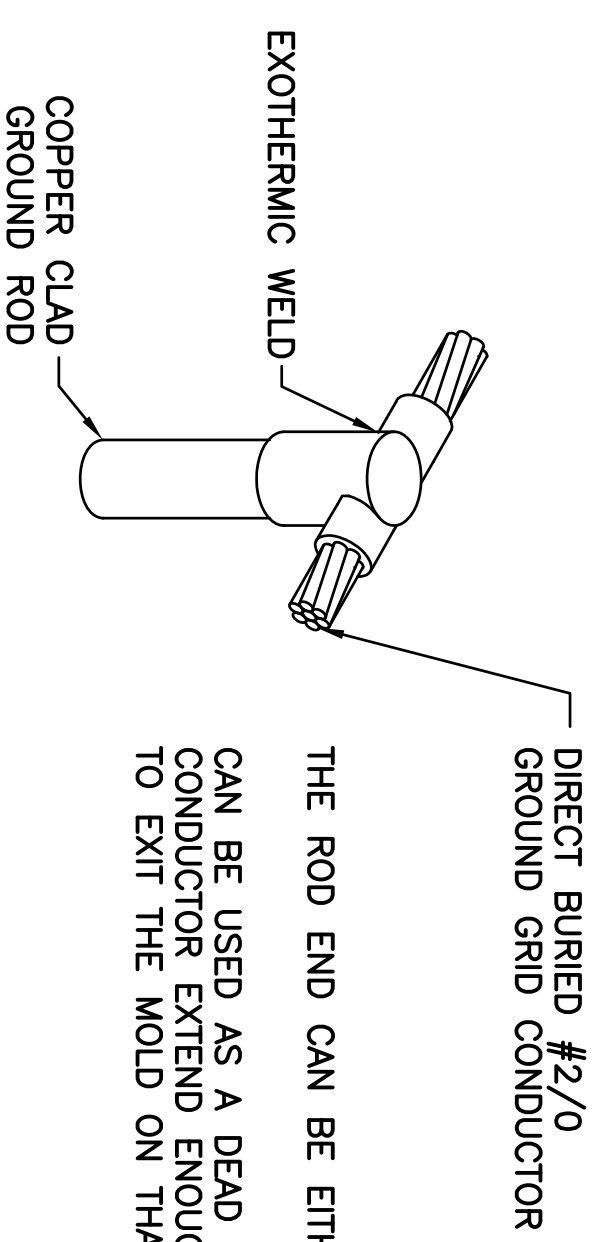
**2 HORIZONTAL REBAR BOND DETAIL**  
SCALE: NTS



**3 CONDUIT GROUNDING DETAIL**  
SCALE: NTS

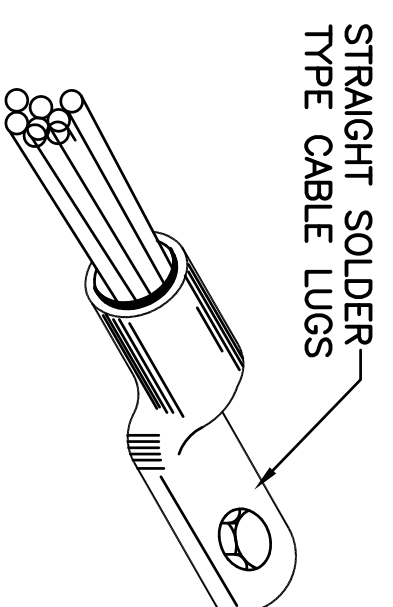


**4 WELDING TO STEEL**  
SCALE: NTS

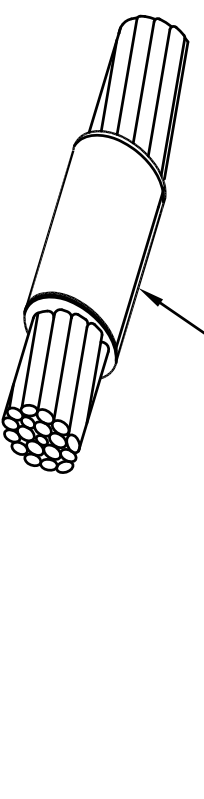


THE ROD END CAN BE EITHER PLAIN OR THREADED. CAN BE USED AS A DEAD END BY LETTING THE CONDUCTOR EXTEND ENOUGH PAST THE TO EXIT THE MOLD ON THAT SIDE.

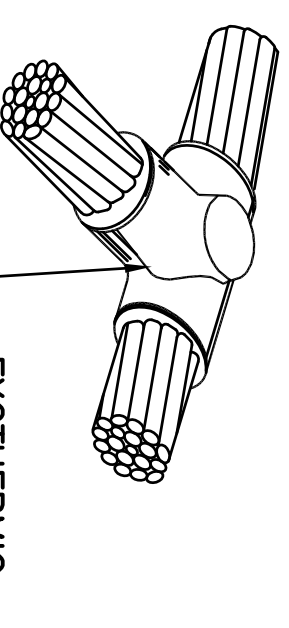
**5 TWO CONDUCTORS TO ROD DETAIL**  
SCALE: NTS



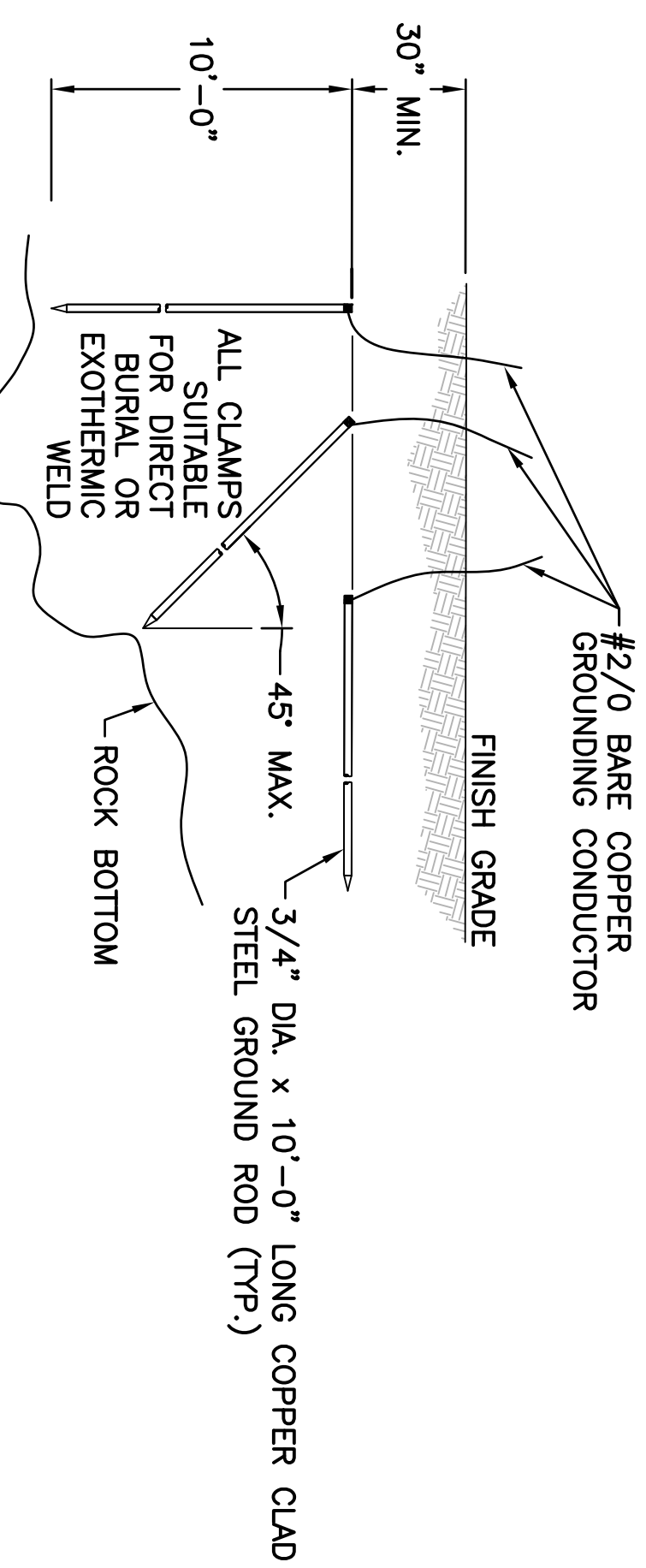
**6 GROUND CABLE LUG**  
SCALE: NTS



**7 HORIZONTAL SPLICE**  
SCALE: NTS

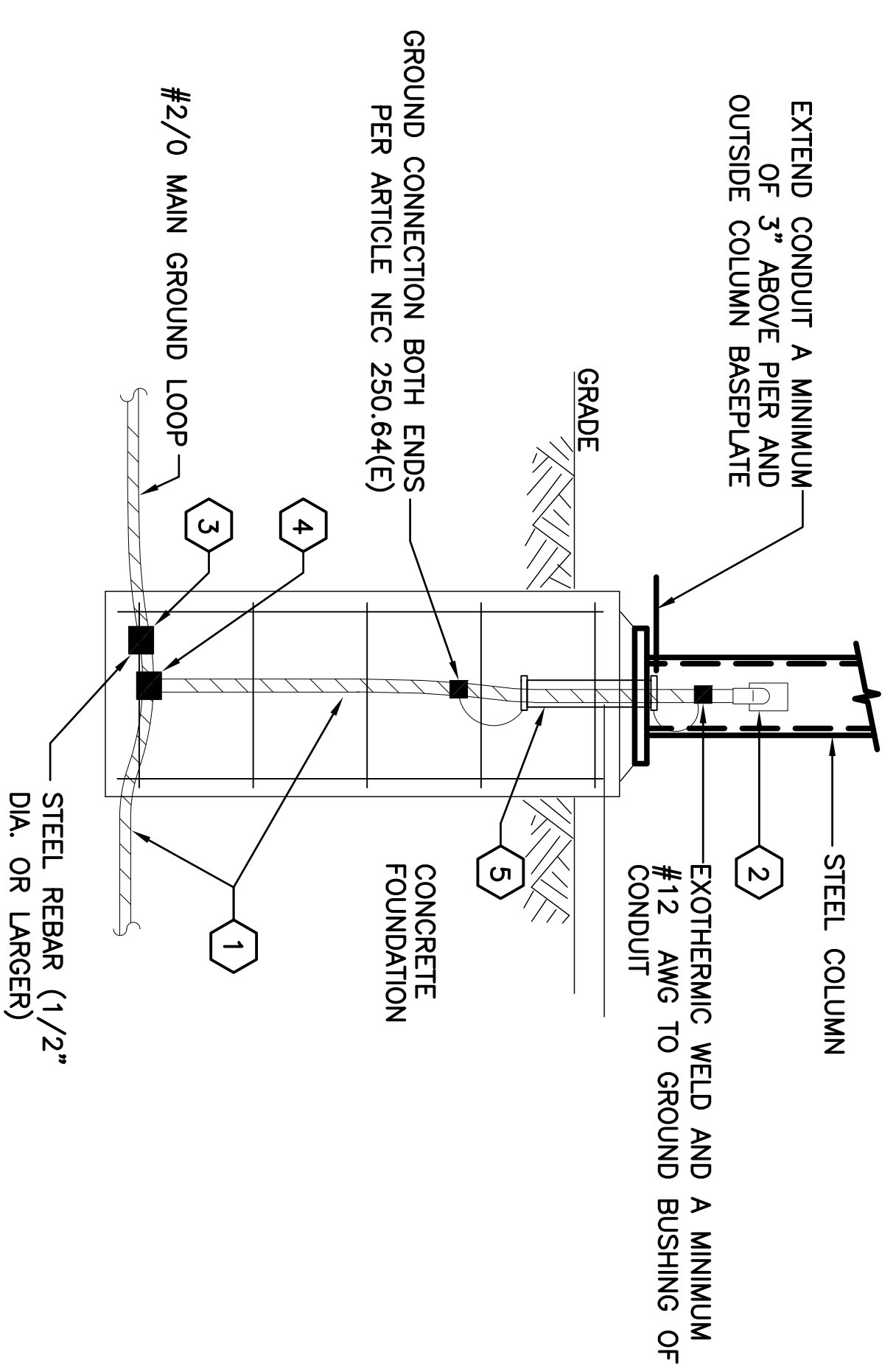


**8 T-CONNECTION EXOTHERMIC**  
SCALE: NTS



- NOTES:
1. THE ELECTRODE SHALL BE INSTALLED SUCH THAT AT LEAST 8" OF LENGTH IS IN CONTACT WITH THE SOIL.
  2. GROUND ROD SHALL BE DRIVEN VERTICALLY, NOT TO EXCEED 45 DEGREES FROM THE VERTICAL.
  3. WHERE ROCK BOTTOM IS ENCOUNTERED THE ELECTRODE SHALL BE PERMITTED TO BE BURIED IN A TRENCH THAT IS AT LEAST 30" DEEP.

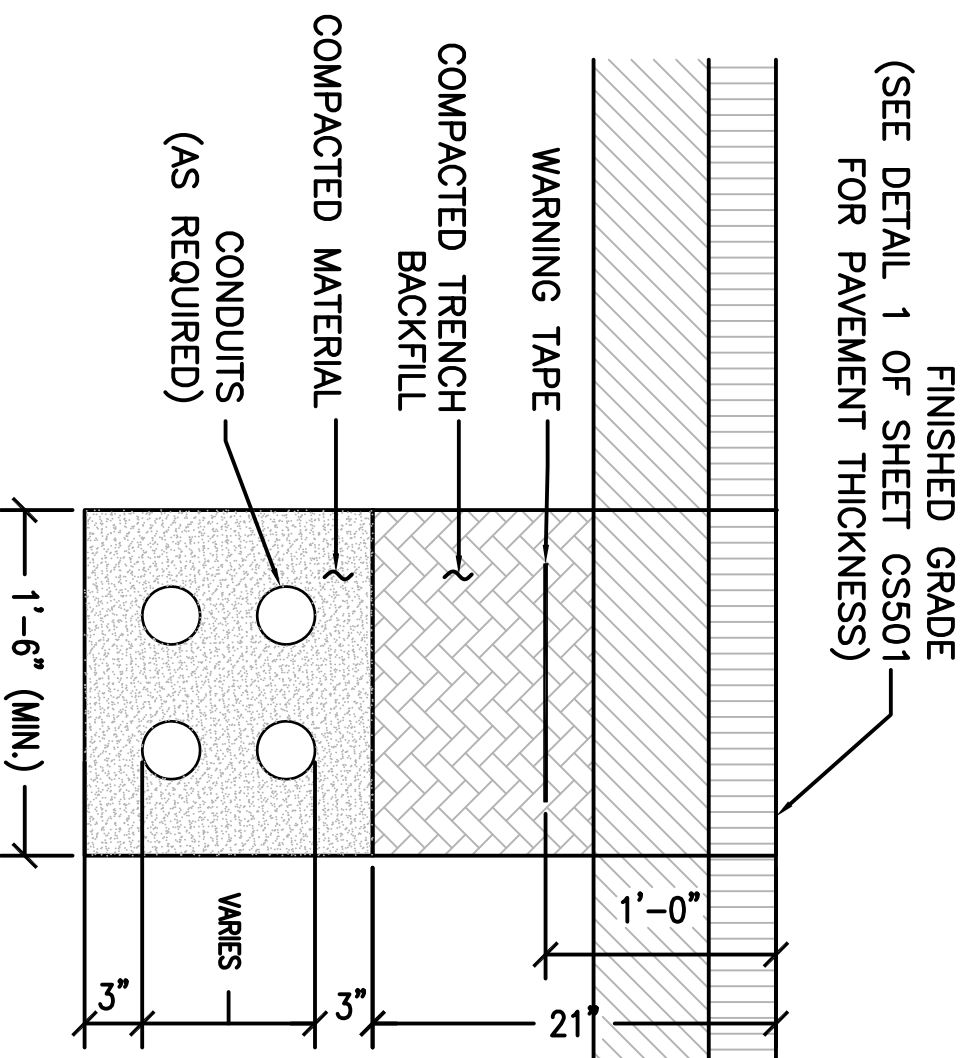
**9 BURIED GROUND ROD DETAIL**  
SCALE: NTS



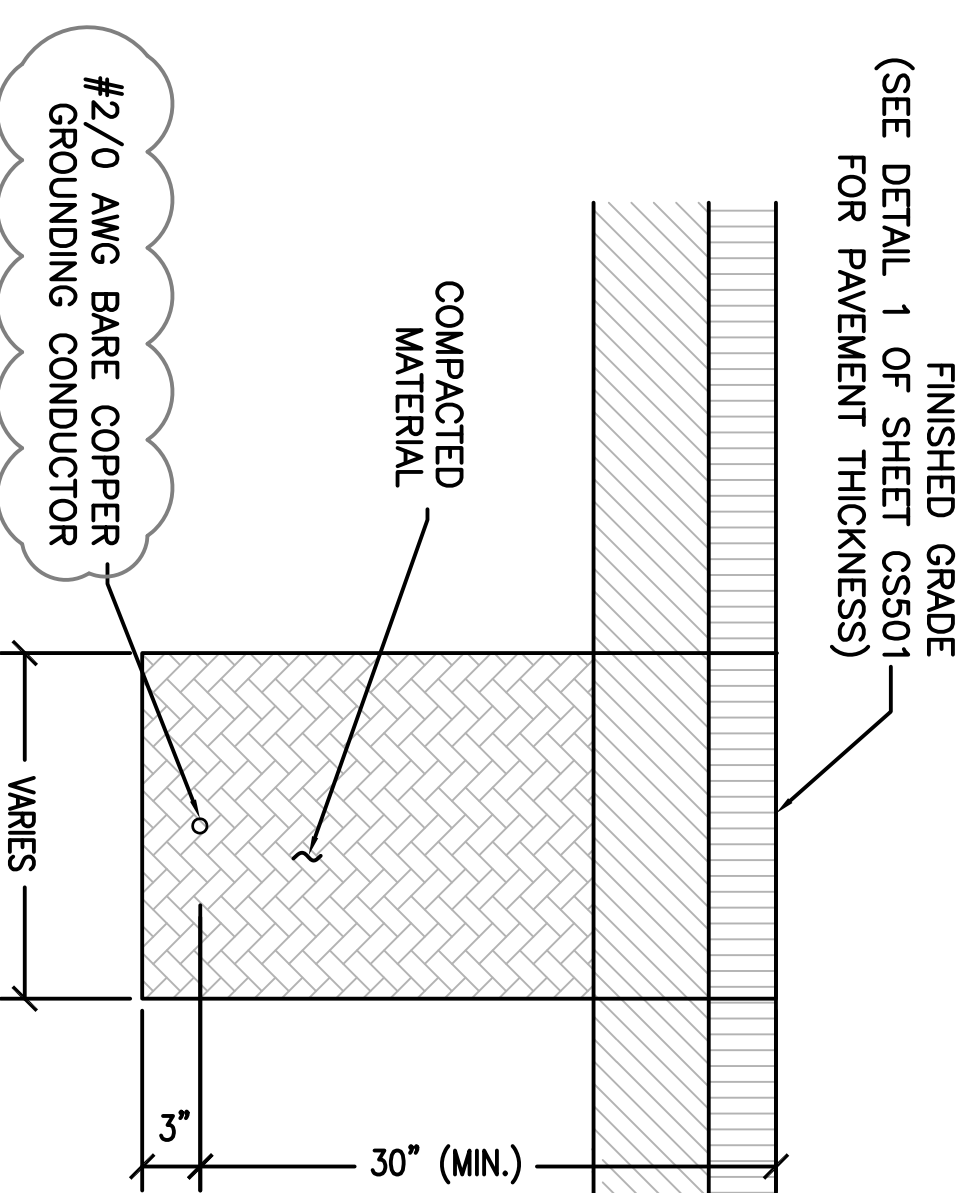
NOTE: BOND GROUNDING CONDUCTOR TO LOWEST STEEL REINFORCING BAR. THE BAR SELECTED SHOULD BE THE ONE PROVIDING THE LONGEST LENGTH (20 FT. MIN.)

ITEM	DESCRIPTION
1	#2/0 AWG BARE, STRANDED COPPER CONDUCTOR
2	EXOTHERMIC WELD CABLE TO STEEL COLUMN
3	GROUNDING CONDUCTOR TO REBAR CONNECTION - EXOTHERMIC TYPE
4	CABLE TO CABLE EXOTHERMIC CONNECTION - PER DRAWING
5	1" DIA. RGS CONDUIT MIN. 18" LONG WITH GROUNDING BUSHING EACH END

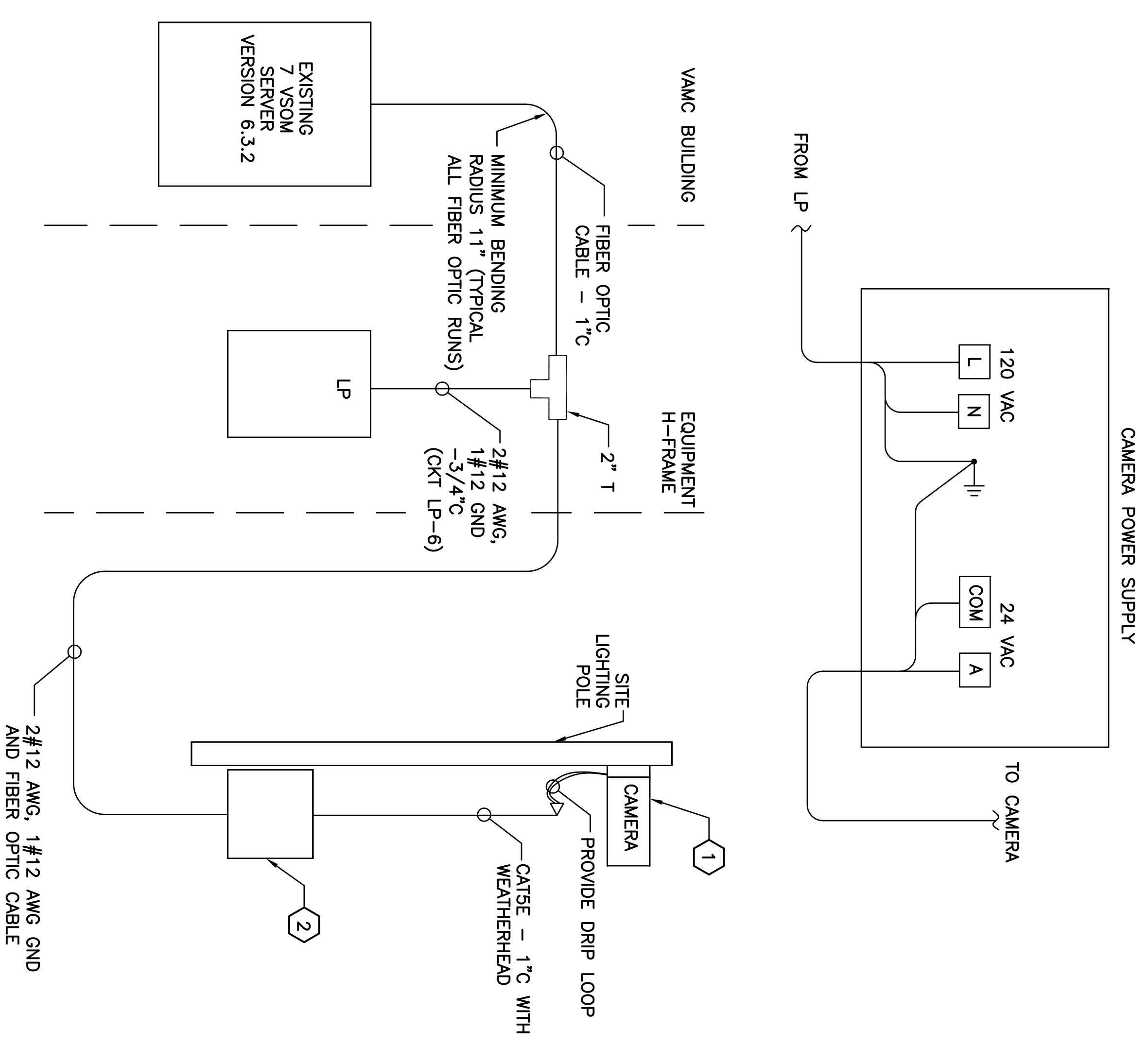
**10 LIGHTING POLE BASE**  
SCALE: NTS



**13 UTILITY TRENCH DETAIL**  
SCALE: NTS

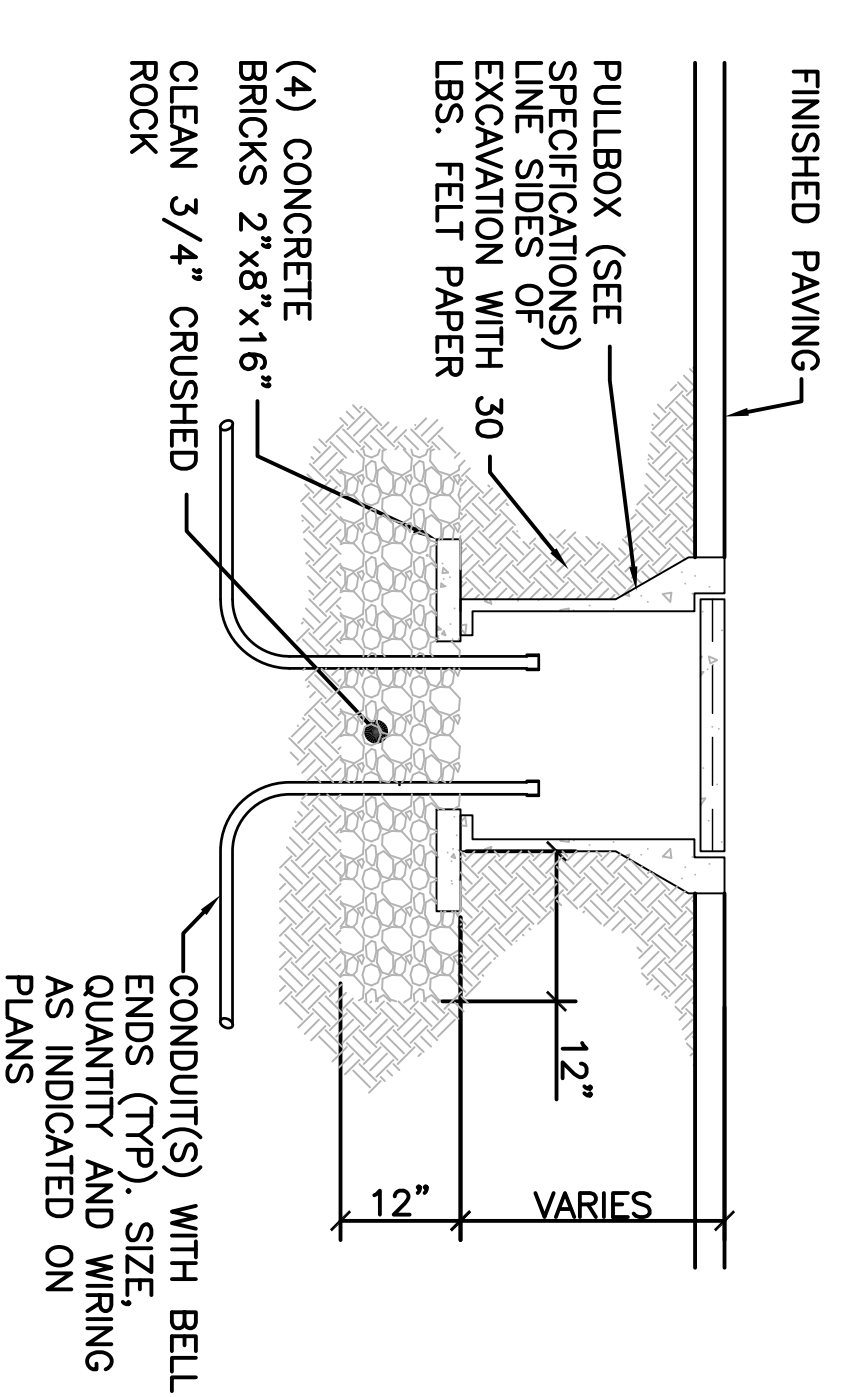


**14 GROUNDING TRENCH DETAIL**  
SCALE: NTS



- NOTES:
1. CISCO CAMERA TO BE COMPATIBLE WITH 7 VSOM VERSION 6.3.2 AND SUITABLE FOR OUTDOOR APPLICATION.
  2. ENCLOSURE INCLUDES A FIBER OPTIC TO CATSE CONVERTER AND A 120V TO 24V TRANSFORMER.

**11 CAMERA FIBER**  
SCALE: NTS



**12 UNDERGROUND PULL BOX DETAIL**  
SCALE: NTS

**CONSTRUCTION DOCUMENT SUBMISSION**

Revisions	By	Date	Description
1		6/10/14	CORRECTED GROUNDING CONDUCTOR
2		6/10/14	CALL-OUT ON DETAIL 14
3		6/5/14	ADDED TRENCH DETAILS 13 AND 14

**CONSULTANTS:**

**ARCHITECT/ENGINEERS:**



**ameco**  
AMEC Environment & Infrastructure, Inc.  
1075 BIG SHANTY ROAD, NW, SUITE 100  
KENNESAW, GEORGIA 30144 (770) 421-3400

**ELECTRICAL DETAILS 1 OF 3**

Approved Project Director  
Approved Project Engineer  
Approved Project Designer  
VAPAKOS PLANNING AND ENGINEERING

**PROJECT TITLE**  
E85 FUELING STATION PLAN

Location	Project Number	Building Number	Drawing Number
LOMA LINDA	605-332		ES501
Date	Checked	Drawn	Dwg No. of
29 APR 2014	DAL	CKB	19 of 22

Office of Construction and Facilities Management  
Department of Veterans Affairs