



CONTRACT DRAWINGS (100%) FOR E85 FUELING STATION



VETERANS ADMINISTRATION MEDICAL CENTER LOMA LINDA, CA
CONTRACT NO. VA701-13-J-0143
PROJECT NO. 605-332

SHEET INDEX		
PAGE NUMBER	SHEET NUMBER	SHEET TITLE
1	GI001	COVER SHEET
2	VF101	EXISTING CONDITIONS
3	CD101	DEMOLITION PLAN
4	CS101	SITE PLAN
5	CS102	GRADING AND DRAINAGE PLAN
6	CS103	FUEL TRUCK TURN PATH ANALYSIS
7	CS501	CIVIL DETAILS
8	SS001	STRUCTURAL GENERAL NOTES
9	SS501	STRUCTURAL TANK PAD AND CONCRETE SPILL PAD
10	MS001	FUELING LEGEND, NOTES, ABBREVIATIONS AND FLOW DIAGRAM
11	MS101	FUELING SITE PLAN
12	MS201	E85 FUEL STORAGE TANK PLAN VIEW
13	MS501	FUELING DETAILS
14	ES001	ELECTRICAL LEGEND, ABBREVIATIONS AND GENERAL NOTES
15	ES101	ELECTRICAL SITE PLAN 1 OF 2
16	ES102	ELECTRICAL SITE PLAN 2 OF 2
17	EP101	FUELING STATION - POWER AND SYSTEMS
18	EP102	FUELING STATION - GROUNDING
19	ES501	ELECTRICAL DETAILS 1 OF 3
20	ES502	ELECTRICAL DETAILS 2 OF 3
21	ES503	ELECTRICAL DETAILS 3 OF 3
22	EI601	ELECTRICAL SINGLE LINE DIAGRAMS - SCHEDULES

CONSTRUCTION STATEMENT OF WORK:

THESE DESIGN DRAWINGS PRESENT TECHNICAL DOCUMENTS FOR THE DEVELOPMENT OF AN E85 FUELING STATION TO ACCOMMODATE VETERANS ADMINISTRATION VEHICLES AT THE VETERANS ADMINISTRATION MEDICAL CENTER, LOMA LINDA, CA.

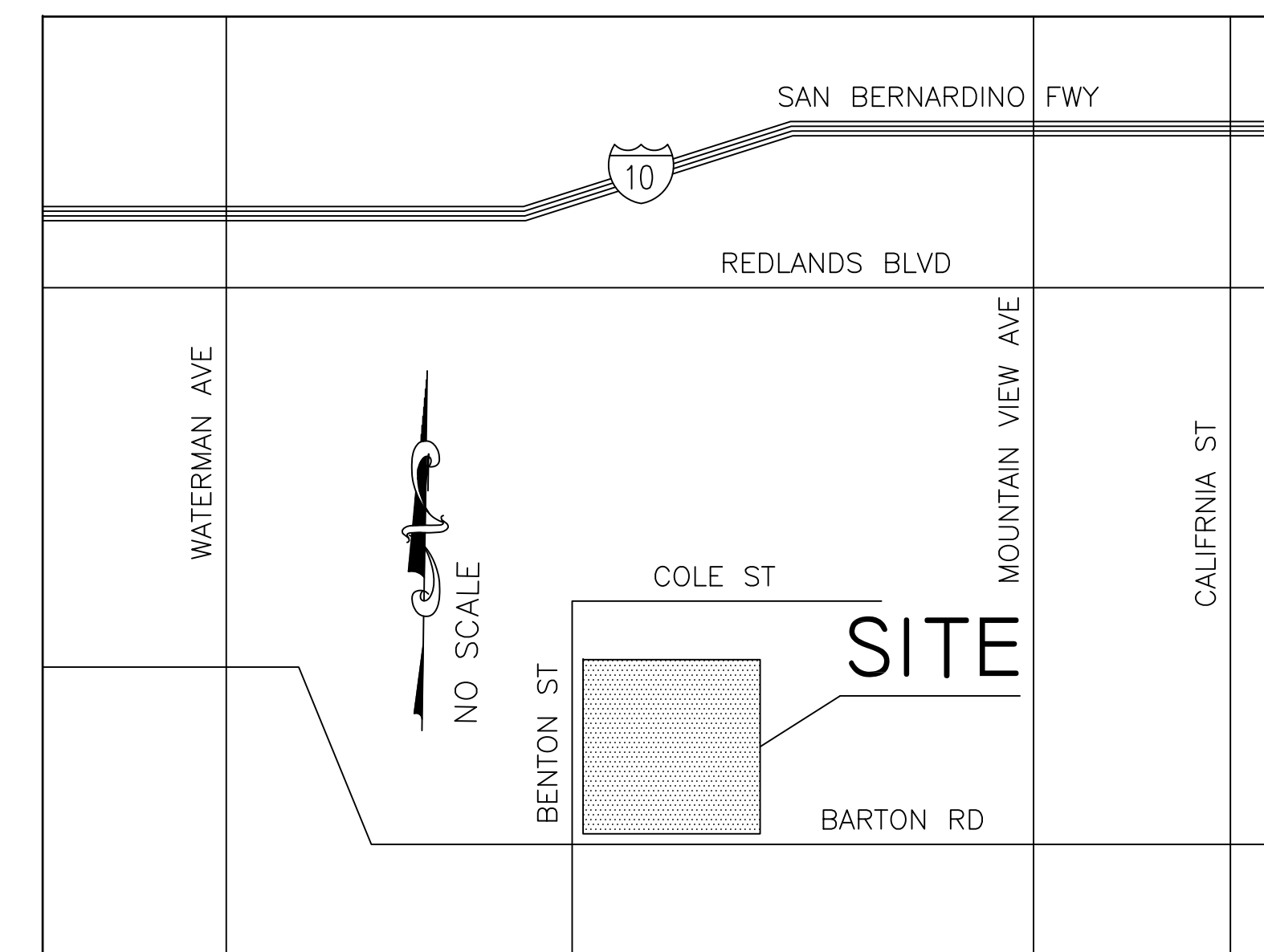
THE ADDITION OF THE E85 FUELING STATION WILL RESULT IN DEMOLITION OF THE EXISTING FUEL TANK CONTAINMENT SLAB, AND THE TWO EXISTING TANKS WILL BE RELOCATED TO A NEW CONCRETE CONTAINMENT SLAB ALONG WITH THE NEW 5000 GALLON E85 FUEL TANK. THE NEW SLAB WILL BE CONSTRUCTED IN THE SAME GENERAL LOCATION AS THE OLD SLAB, ALLOWING FOR CODE REQUIREMENTS.

BOTH THE OFF-LOADING FUEL SUPPLY FILL BOX AND THE DISPENSING PUMP WILL BE LOCATED WITHIN THE CONTAINED AREA ON THE NEW SLAB. A CONCRETE TRUCK OFF-LOADING SPILL SLAB WILL BE CONSTRUCTED ADJACENT TO THE CONTAINMENT SLAB FOR PARKING THE 32-FOOT LONG FUEL SUPPLY TRUCK DURING THE OFF-LOADING PROCESS. THIS SLAB WILL AT A LOCATION AT LEAST 25 FEET FROM ALL FUEL TANKS.

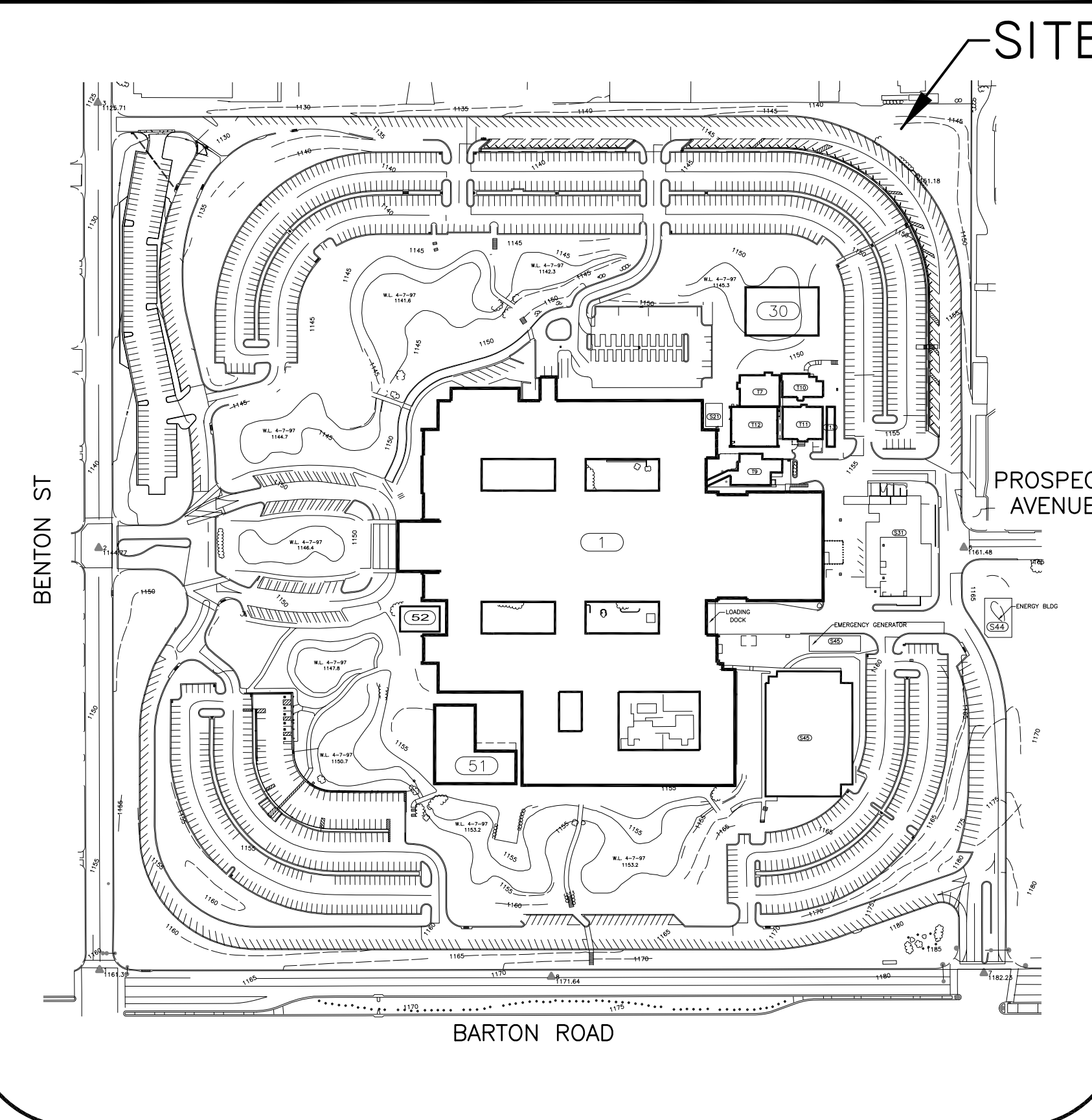
THE FUEL MANAGEMENT SYSTEM WILL BE PROGRAMMED CONSISTENT WITH VA REQUIREMENTS AND BE COMPATIBLE WITH BOTH THE WEX AND GSA PROCESSING SYSTEMS.

THE E85 FUEL STATION DESIGN ALSO INCLUDES UPGRADED LIGHTING, AN EMERGENCY TELEPHONE, AND SECURITY CAMERAS FOR VIDEO SURVEILLANCE.

VICINITY MAP



SITE LOCATION MAP



PREPARED FOR:

DEPARTMENT OF VETERANS AFFAIRS
PROGRAM CONTRACTING ACTIVITY CENTRAL
6150 OAK TREE BLVD., SUITE 300
INDEPENDENCE, OH 44131

PREPARED BY:

amec
AMEC ENVIRONMENT AND INFRASTRUCTURE, INC.
1075 BIG SHANTY ROAD, SUITE 100
KENNESAW, GA 30144
TELEPHONE: (770) 421-3400

Approved: BARBARA FALLEN MEDICAL CENTER DIRECTOR	Approved: GEOFFREY SCHULLER ASSISTANT CHIEF, FACILITY MANAGEMENT SERVICES (FMS)	Approved: NORVELL KING CHIEF, POLICE
Approved: DWIGHT EVANS, M.D. CHIEF OF STAFF	Approved: ANDREA MARTINEZ CHIEF, PROJECTS SECTION	Approved: JONATHAN VINSKEY SAFETY MANAGER
Approved: MELISSA G. LLOYD ASSOCIATE DIRECTOR FOR PATIENT CARE AND NURSING ADMINISTRATION	Approved: LARRY BARRETT ENERGY MANAGER, F.M.S.	Approved: MICHAEL B. ING MD CHIEF, INFECTIOUS DISEASE / INFECTION CONTROL
Approved: SHANE ELLIOT ASSOCIATE DIRECTOR FOR ADMINISTRATION	Approved: RANDAL MUSHRUSH PLANT SUPERVISOR, FMS	Approved: ALONSO ACOSTA PROJECT ENGINEER/COTR, FMS
Approved: PRACHI ASHER ASSISTANT DIRECTOR	Approved: DOUG WIRTHGEN CHIEF, OFFICE OF INFORMATION & TECHNOLOGY (OI&T)/FCIO	Approved: ALEJANDRA VALDERRAMA CONTRACTING OFFICER

CONSTRUCTION DOCUMENT SUBMISSION

REVISION 2 6/10/14 REVISION 1 6/5/14 Revisions Date	CONSULTANTS:		ARCHITECT/ENGINEERS: AMEC Environment & Infrastructure, Inc. 1075 BIG SHANTY ROAD, NW, SUITE 100 KENNESAW, GEORGIA 30144 (770) 421-3400	Drawing Title COVER SHEET	Project Title COVER SHEET	Project Number 605-332	Office of Construction and Facilities Management Department of Veterans Affairs
				Approved Project Director - VAPAHCS PLANNING AND ENGINEERING	Location - LOMA LINDA CA	Drawing Number GI001	
				Date 29 APR 2014	Checked JLS	Drawn CKB	Dwg. 1 of 22