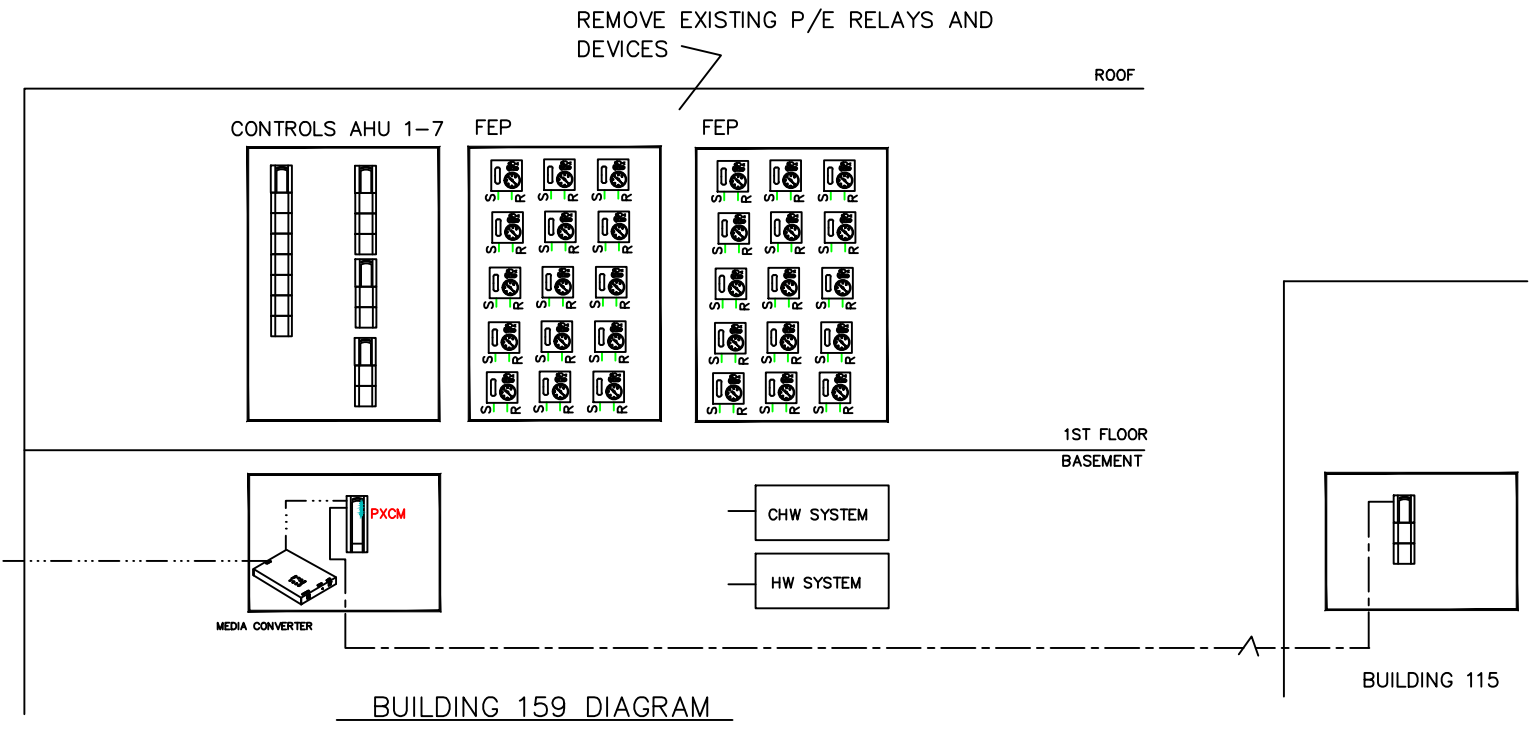


CONTROL SYSTEM NOTES:

1. REMOVE EXISTING ELECTRONIC/PNEUMATIC RELAYS CABINETS REMAIN FOR MODULE EXPANSION
2. PROVIDE NEW CONROL WIRING FROM EXISTING AND NEW MODULES AS REQUIRED TO MEET POINT NEEDS. AND CONTROL FUNCTIONS.
3. EXISTING CONDUITS TO MECHANICAL EQUIPMENT IN GOOD CONDITION CAN BE REUSED. PROVIDE NEW POINTS AT NEW MECHANICAL EQUIP. PROVIDE NEW CONTROL DEVICES AT NEW EQUIPMENT INCLUDING OPERATORS, AND SENSORS IN NEW AIR HANDLERS. ALL PNEUMATICS ARE REMOVED.
4. WHERE NEW VFD'S ARE SHOWN FOR AIR HANDLERS . INSTALL IN PROXIMITY TO CONTROL CABINETS ON FIRST FLOOR.

CONTROL RISER DIAGRAM -- EXISTING



NEW DDC ARCHITECTURE -- REVISED

RCD-001