

A

B

C

D

E

F

three inches = one foot

one and one half inches = one foot

one inch = one foot

three quarters inch = one foot

one half inch = one foot

three eighths inch = one foot

one quarter inch = one foot

one eighth inch = one foot

A

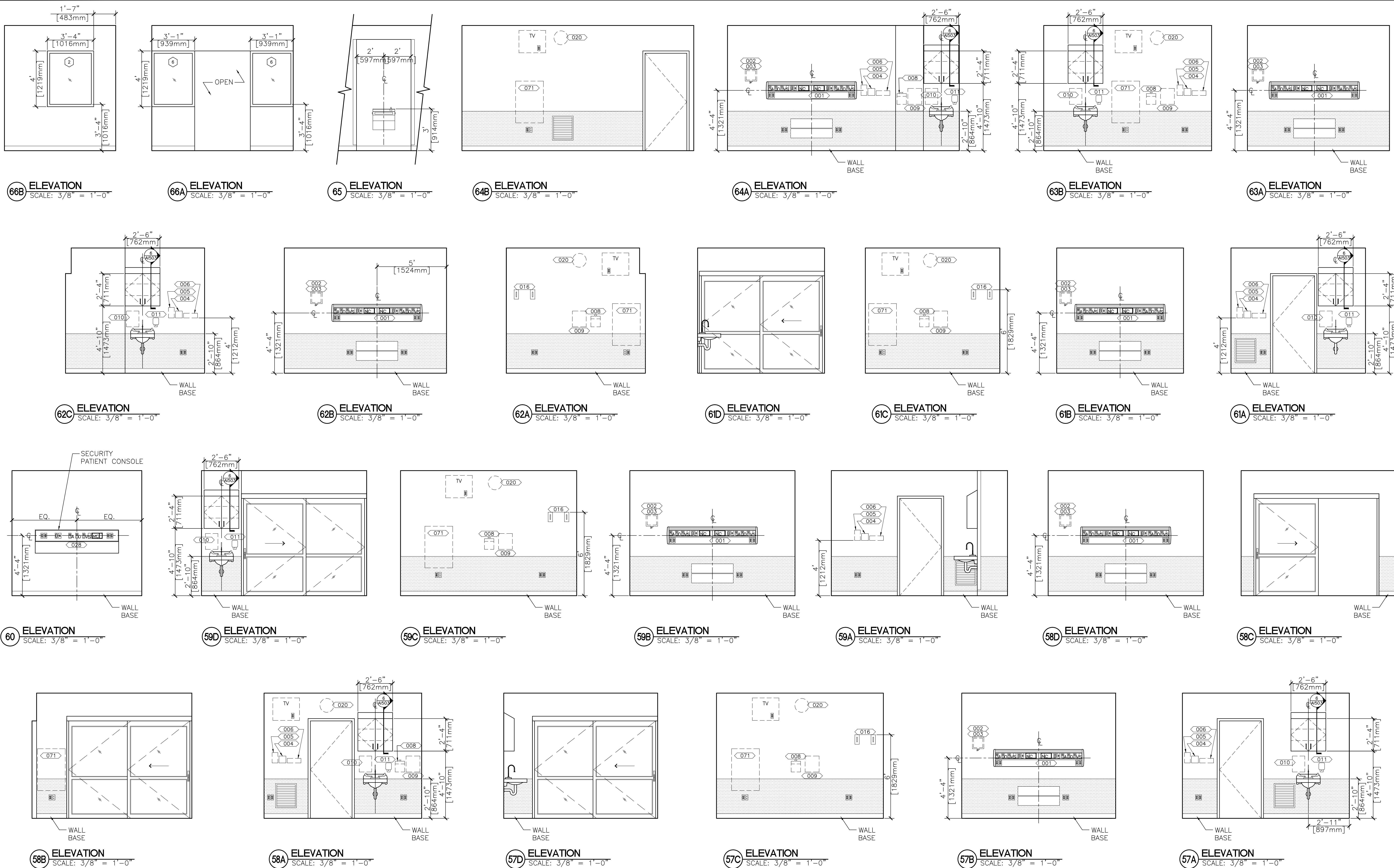
B

C

D

E

F



FOR BIDDING PURPOSES ONLY  
FINAL SUBMISSION  
FULLY SPRINKLERED

CONSULTANTS:		ARCHITECT/ENGINEERS:		Drawing Title	Project Title	Project Number
RSg architects		CVA Culpeper Veterans Associates		INTERIOR ELEVATIONS AREA 'D'	BALTIMORE VA MEDICAL CENTER MANAGED CARE / ED IMPROVEMENTS AND ENROLLMENT CENTER	512-511
RSG, pc 14801 Murdock Street - Unit 135 Chantilly, Virginia 20151 Ph 703.378.1864 Fax 703.378.1981		CULPEPER VETERANS ASSOCIATES 4116 WALNEY ROAD SUITE A CHANTILLY, VA 20151 (703) 955-7160 FAX (703) 890-3031		Scale 3/8" = 1'-0"	Location BALTIMORE, MARYLAND	Building Number 1
Revisions:		Date		Approved: Project Director	Date 8/17/2012	Checked KC
					Drawn	Drawing Number 1-AI208
						Dwg. 61 of 175