

GENERAL STRUCTURAL NOTES

SUMMARY

A new "Hantair Spaceframe" is to be supported between the third and fourth floors, light to the interstitial floor. The "Hantair Spaceframe" is to be hung by twelve 1/2" steel rods, standing through the interstitial floor to the fourth floor structural beams above. Two fourth floor steel beams require reinforcement, see detail (15B).

Prior to construction verify as-built conditions for interference. Report any conflicts to architect/engineer for review/direction.

DESIGN / CONSTRUCTION

The structural design and documentation are based on the 2010 Oregon Structural Specialty Code (OSCC). The structural documents are to be used in conjunction with the architectural drawings, mechanical drawings, and the project specifications. The contractor is responsible for coordination of all documentation and is to bring document discrepancies to the attention of the architect / engineer for clarification / direction.

The stability of the structure is dependent on the completed condition. The contractor is responsible for temporary bracing during construction.

DESIGN LOADS

In addition to the structural dead loads, the following live loads and design criteria were used:

Floors:		
Typical:	60 psf (per original documents)	
Special:	100 psf (per original documents)	
Hantair Spaceframe:		5,000 lbs
Angular Equipment:		
(C) VISUM LG LED SURGICAL LIGHT 4 PLAT PANEL ARM		500 lbs
(D) TANDYM PLAT PANEL ARM / EQUIPMENT BOOM (1000/1000)		2,000 lbs
(E) ANESTHESIA BOOM (800/1000)		1,000 lbs
Seismic:		
	Occupancy Category II	
	Site Class = D	
	Seismic Design Category = D	
	$S_a = 0.307$ $S_1 = 0.241$	
	$S_{ps} = 0.121$ $S_{p1} = 0.395$	

SPECIAL INSPECTIONS

- Special inspections are to be performed by a qualified independent special inspector and shall conform to Section 103 and Chapter 11 of the 2010 Oregon Structural Specialty Code (OSCC).
- Inspections are to be continuous or periodic as defined by IRC Chapter 11, Steel (OSCC Table T10.3).
- During the welding of all members or connections except as noted in IRC Table T10.3.
- The special inspection requirements are equally applicable to prefabricated as well as on-site designed construction.
- Any items falling to meet the project specifications shall be immediately brought to the attention of the architect and structural engineer.
- The special inspector shall provide a copy of their report to the owner, architect, structural engineer, contractor, and building official as each test is completed.

STRUCTURAL OBSERVATIONS

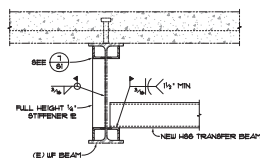
- Structural observations by the engineer of record or his representative shall be required at the following approximate times during construction:
 - Final observation after primary structural work complete, prior to cover by finish materials.
- The contractor shall notify the engineer of record four (4) calendar days in advance of completion date regarding the observation.

GENERAL

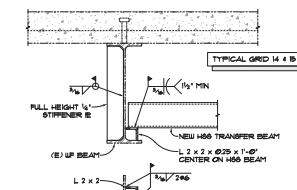
- These notes set minimum standards for construction. The drawings govern over the General Notes to extent shown.
- Contractor shall verify all dimensions and conditions on drawings and in the field. Coordinate locations of openings through floors, roof and walls with architectural, mechanical and electrical plans. Notify design agency of any discrepancies.
- Shop drawings shall be required on structural steel and the bidder designed spaceframe and shall be reviewed prior to fabrication.

STRUCTURAL AND MISCELLANEOUS STEEL

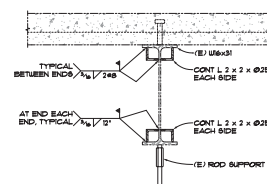
- Detailing, fabrication and erection shall conform to the Steel Construction Manual of AISC.
- All structural steel column / beams to be grade 50. All other steel to be A36.
- All welds to be made by Certified welders to AWS Standards with E70XX electrodes (stick or shielded).
- Bolts to be A307 unless noted otherwise.
- All structural tubing to be ASTM A501 Grade B 1/2" x 46 ksi.
- All pipe to be ASTM A53, Type E or S, Grade B.
- Do not oversize drilled or punched holes with burning torch.



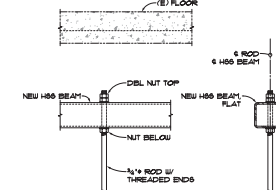
3
S1 1/2"x1'-0"



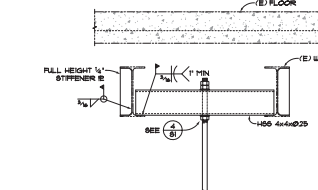
4
S1 1/2"x1'-0"



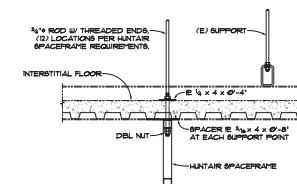
7
S1 1/2"x1'-0"



5
S1 1/2"x1'-0"

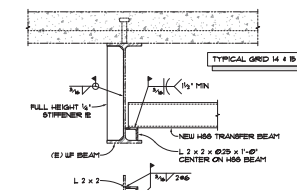


6
S1 1/2"x1'-0"



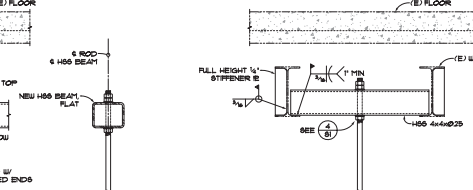
8
S1 1/2"x1'-0"

1
S1 1/2"x1'-0"



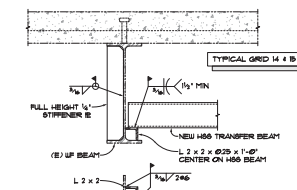
1
S1 1/2"x1'-0"

2
S1 1/2"x1'-0"

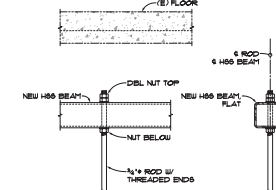


2
S1 1/2"x1'-0"

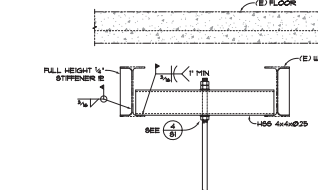
7
S1 1/2"x1'-0"



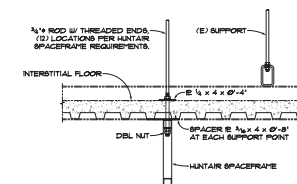
7
S1 1/2"x1'-0"



5
S1 1/2"x1'-0"

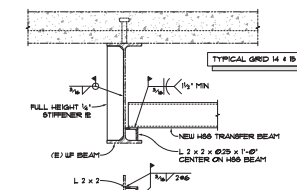


6
S1 1/2"x1'-0"



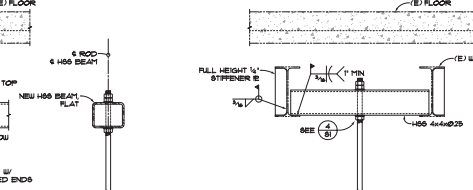
8
S1 1/2"x1'-0"

1
S1 1/2"x1'-0"



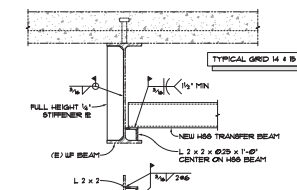
1
S1 1/2"x1'-0"

2
S1 1/2"x1'-0"

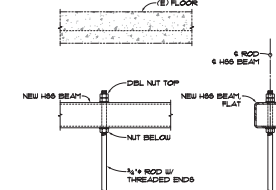


2
S1 1/2"x1'-0"

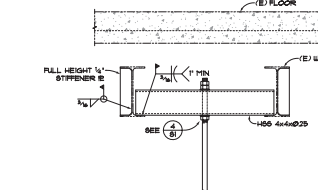
7
S1 1/2"x1'-0"



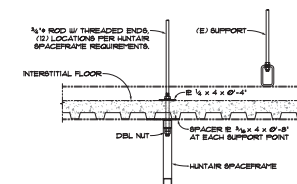
7
S1 1/2"x1'-0"



5
S1 1/2"x1'-0"

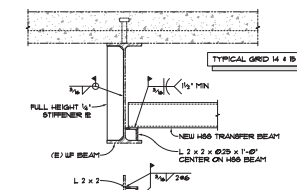


6
S1 1/2"x1'-0"



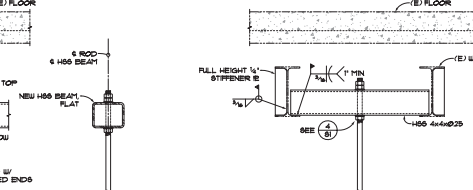
8
S1 1/2"x1'-0"

1
S1 1/2"x1'-0"



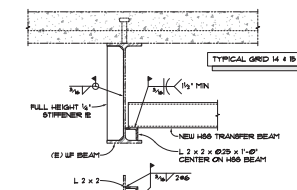
1
S1 1/2"x1'-0"

2
S1 1/2"x1'-0"

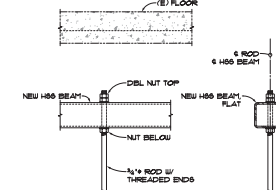


2
S1 1/2"x1'-0"

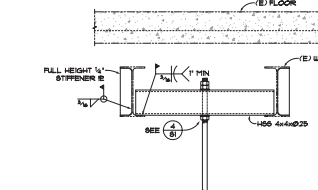
7
S1 1/2"x1'-0"



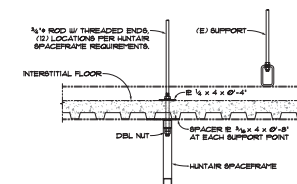
7
S1 1/2"x1'-0"



5
S1 1/2"x1'-0"

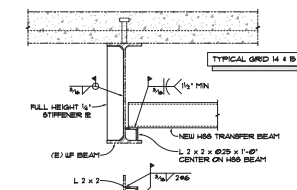


6
S1 1/2"x1'-0"



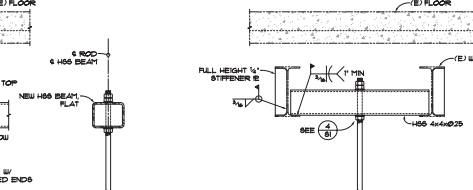
8
S1 1/2"x1'-0"

1
S1 1/2"x1'-0"



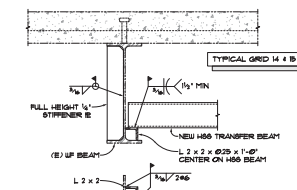
1
S1 1/2"x1'-0"

2
S1 1/2"x1'-0"

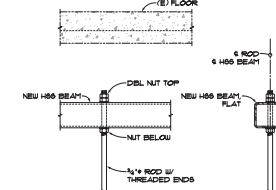


2
S1 1/2"x1'-0"

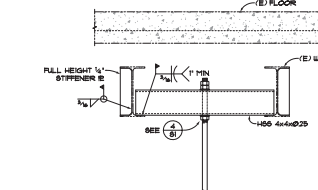
7
S1 1/2"x1'-0"



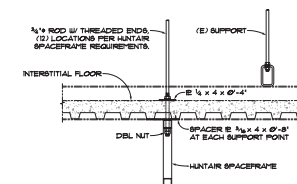
7
S1 1/2"x1'-0"



5
S1 1/2"x1'-0"

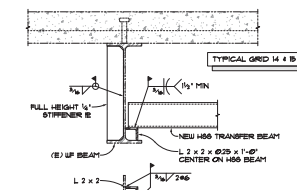


6
S1 1/2"x1'-0"



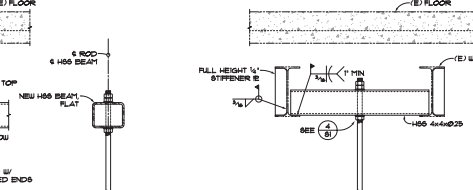
8
S1 1/2"x1'-0"

1
S1 1/2"x1'-0"



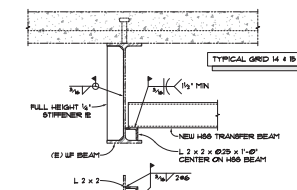
1
S1 1/2"x1'-0"

2
S1 1/2"x1'-0"

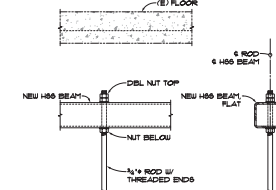


2
S1 1/2"x1'-0"

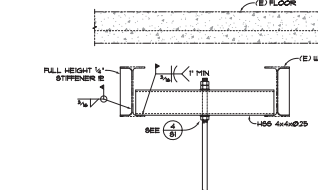
7
S1 1/2"x1'-0"



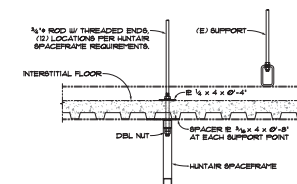
7
S1 1/2"x1'-0"



5
S1 1/2"x1'-0"

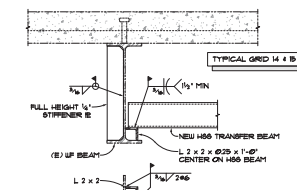


6
S1 1/2"x1'-0"



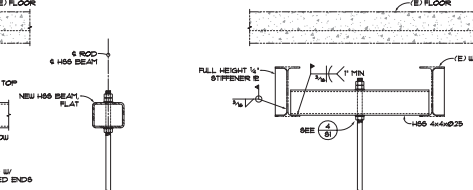
8
S1 1/2"x1'-0"

1
S1 1/2"x1'-0"



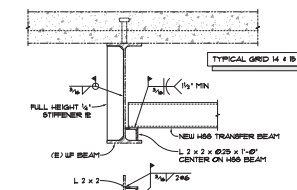
1
S1 1/2"x1'-0"

2
S1 1/2"x1'-0"

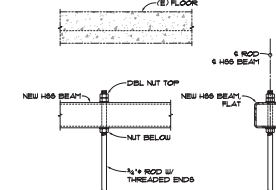


2
S1 1/2"x1'-0"

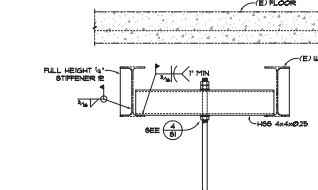
7
S1 1/2"x1'-0"



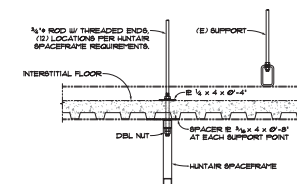
7
S1 1/2"x1'-0"



5
S1 1/2"x1'-0"

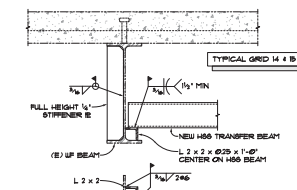


6
S1 1/2"x1'-0"



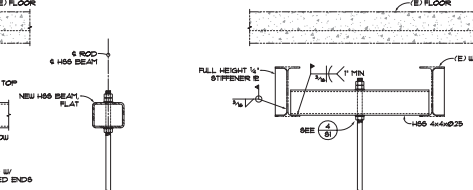
8
S1 1/2"x1'-0"

1
S1 1/2"x1'-0"



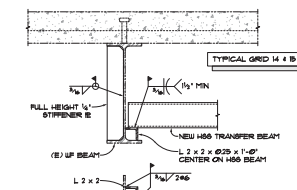
1
S1 1/2"x1'-0"

2
S1 1/2"x1'-0"

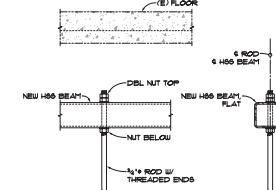


2
S1 1/2"x1'-0"

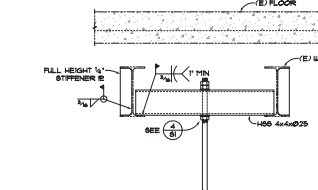
7
S1 1/2"x1'-0"



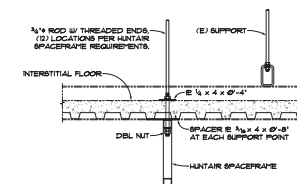
7
S1 1/2"x1'-0"



5
S1 1/2"x1'-0"

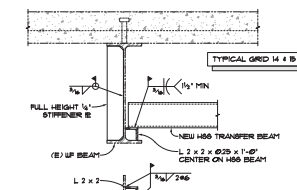


6
S1 1/2"x1'-0"



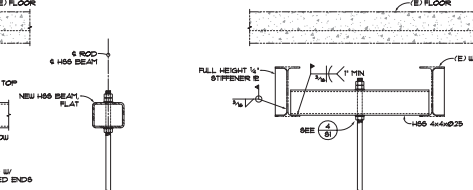
8
S1 1/2"x1'-0"

1
S1 1/2"x1'-0"



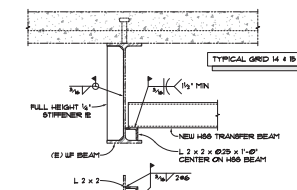
1
S1 1/2"x1'-0"

2
S1 1/2"x1'-0"

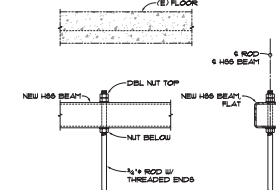


2
S1 1/2"x1'-0"

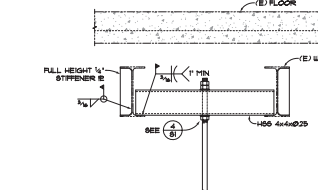
7
S1 1/2"x1'-0"



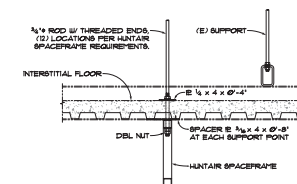
7
S1 1/2"x1'-0"



5
S1 1/2"x1'-0"



6
S1 1/2"x1'-0"



8
S1 1/2"x1'-0"