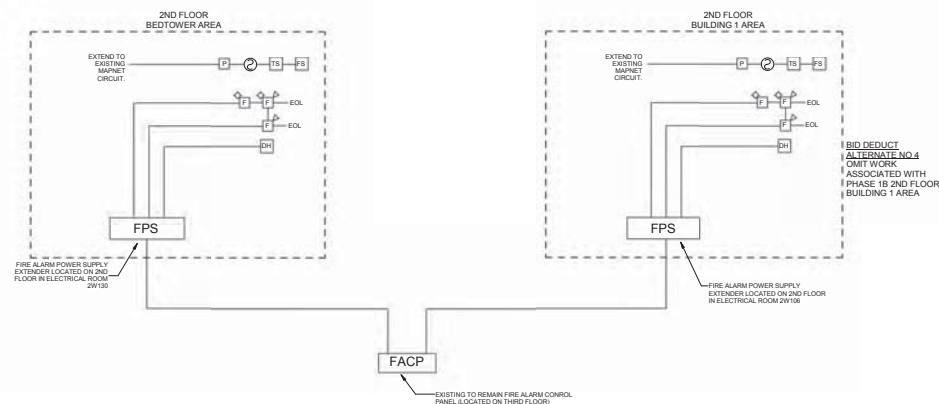


INPUT \ OUTPUT	OUTPUT									
	Sound general building alarm for Other and High Rise (non-Health Care) (see Section 2.4.1)	Notify necessary staff for response for Health Care and High Rise building only (alarm signal may be different on different floors)	Notify fire department	Initiate supervisory signal to a 24-hour manned point for immediate response	Close associate smoke barrier doors on the floor	Close dampers on fan premitive to detector	Shut down air handler served by the detector	Recall elevator	Open "hockey" egress doors on floor to fire origin	
Duct Smoke Detector										
Area Smoke Detector	X	X	X	X					X	
Door Release Smoke Detector	X	X	X	X	X	X			X	
Manual Pull Station	X	X	X		X			X	X	
Sprinkler Waterflow / Pressure Switch	X	X	X		X				X	
Water Control Valve Tamper				X						X
High/Low Pressure Dry - Pipe Sprinkler System				X						

* Those doors that are required to be tied to the fire alarm system such as delayed egress and access controlled doors.

FIRE ALARM SYSTEM MATRIX
NOT TO SCALE



FIRE ALARM RISER
NOT TO SCALE

GENERAL NOTES

- ALL MOUNTING HEIGHTS ARE TO CENTER OF DEVICE UNLESS OTHERWISE NOTED.
- ALL NEW WALL MOUNTED ELECTRICAL DEVICES ARE TO BE INSTALLED FLUSH IN WALL UNLESS OTHERWISE NOTED. ALL ELECTRICAL CONDUIT SHALL BE CONCEALED BEHIND FINISHED WALLS AND ABOVE FINISHED CEILING UNLESS OTHERWISE NOTED. THE COST TO CUT AND PATCH WALLS SHALL BE THE RESPONSIBILITY OF THE TRADE REQUIRING THE CUTTING.
- ELECTRICAL CONTRACTOR IS RESPONSIBLE FOR REMOVAL AND REPLACEMENT OF CEILING REQUIRED FOR ELECTRICAL WORK. ELECTRICAL CONTRACTOR SHALL REPLACE ANY DAMAGED CEILING TILES.
- PRIOR TO INSTALLATION, VERIFY PRECISE LOCATION OF NEW OR RELOCATED WALL OR CEILING MOUNTED DEVICES WITH ARCHITECTURAL ELEVATIONS AND REFLECTED CEILING PLANS.
- ALL NOISE GENERATING OPERATIONS, INCLUDING CUTTING OF CEILINGS, WALLS AND FLOORS, CORING, DRILLING, ETC. SHALL BE SCHEDULED ON WEEKENDS OR BETWEEN 8:00PM AND 7:00AM ON WEEKDAYS. INCLUDE ALL PREMIUM TIME CHARGES IN BID.
- ELECTRICAL CONTRACTOR SHALL CONNECT ALL MECHANICAL EQUIPMENT COMPLETE PER MANUFACTURER'S WIRING DIAGRAMS AND INSTRUCTIONS. COORDINATE WITH MECHANICAL CONTRACTOR AND VERIFY LOCATION, VOLTAGE, AMP'S, NO. OF WIRES, AND PROTECTION REQUIREMENTS PRIOR TO ROUGH-IN. CONTACT ENGINEER WITH ANY DISCREPANCIES FROM DESIGN DRAWINGS.
- DEFINITION: "PROVIDE"** - FURNISH, INSTALL AND CONNECT COMPLETE.
- PROVIDE FIRESTOP PUTTY PADS (SPECSEAL) WRAPPED BEHIND OUTLET BOXES THAT ARE MEMBRANE PENETRATIONS LOCATED ON FIRE RATED WALLS.

LEGEND

- FACP** ADDRESSABLE FIRE ALARM CONTROL PANEL (MANUFACTURER SIMPLEXGRINELL 4100U).
- FABA** FIRE ALARM REMOTE ANNUNCIATOR - FLUSH MOUNTED AT 5'-0" AFF TO TOP OF DEVICE.
- FPS** FIRE ALARM POWER NAC SUPPLY EXTENDER - CONNECT TO 120V LIFE SAFETY CIRCUIT. SURFACE MOUNTED AT 5'-0" AFF TO TOP OF DEVICE.
- P** ADDRESSABLE MANUAL PULL STATION (MATCH EXISTING TYPE) - DOUBLE ACTION BREAK GLASS/PULL, SEMI-RECESSED, MOUNTED AT 48" AFF.
- T** SPEAKER/STROBE (ADA TYPE) (MATCH EXISTING TYPE) - RED HOUSING WITH WHITE "FIRE" LETTERING. MOUNTED AT 80" AFF.
- F** STROBE ONLY DEVICE (ADA TYPE) (MATCH EXISTING TYPE) - RED HOUSING WITH WHITE "FIRE" LETTERING. MOUNTED AT 80" AFF.
- S** SMOKE DETECTOR - ADDRESSABLE INTELLIGENT PHOTOELECTRIC TYPE (MATCH EXISTING TYPE) - CEILING MOUNTED.
- IOI** SMOKE DETECTOR - ADDRESSABLE INTELLIGENT IONIZATION TYPE (MATCH EXISTING TYPE) - CEILING MOUNTED.
- EL** SMOKE DETECTOR FOR ELEVATOR CONTROLS - ADDRESSABLE INTELLIGENT PHOTOELECTRIC TYPE (MATCH EXISTING TYPE) - CEILING MOUNTED. INSTALL A SMOKE DETECTOR WITHIN 5'-0" OF ANY ELEVATOR ENTRANCES.
- ED** DUCT DETECTOR - ADDRESSABLE INTELLIGENT PHOTOELECTRIC DETECTOR (MATCH EXISTING TYPE), SAMPLING TUBES AND PROGRAMMABLE RELAY BASE. PROVIDE DUCT DETECTOR TEST/RESET SWITCH (MATCH EXISTING TYPE) WITH REMOTE INDICATOR LAMP FOR EACH DUCT DETECTOR - WALL MOUNTED AT 7'-0" AFF.
- BE** CONTROL MODULE (MATCH EXISTING TYPE) - RELAY IAM FOR CONTROL OF SMOKE DAMPERS, ELEVATOR RECALL, AUTOMATIC DOORS, LATCH RETRACTION, ETC.
- MU** MONITOR MODULE (MATCH EXISTING TYPE) - SUPERVISED IAM FOR MONITORING TAMPER SWITCH, FLOW SWITCH, DAMPER POSITION, ETC.
- TS** TAMPER SWITCH - MECHANICAL CONTRACTOR SHALL FURNISH AND INSTALL TAMPER SWITCH. ELECTRICAL CONTRACTOR SHALL PROVIDE MONITOR MODULE AND TEST SWITCH.
- FS** WATER FLOW SWITCH - MECHANICAL CONTRACTOR SHALL FURNISH AND INSTALL FLOW SWITCH. ELECTRICAL CONTRACTOR SHALL PROVIDE MONITOR MODULE AND TEST SWITCH PROVIDE LOCAL ALARM BELL.
- CH** DOOR HOLDER - 24VDC MAGNETIC (MATCH EXISTING TYPE).
- E** ELECTRIC ACTUATED COMBINATION SMOKE/FIRE DAMPER - FURNISHED AND INSTALLED BY THE MC. EC SHALL PROVIDE 120V CONNECTION AND (1) SIMPLEX IAM WITH 1-SENSE INPUT. REFER TO ELECTRICAL DETAILS FOR ADDITIONAL INFORMATION.
- PH** FIREMAN'S PHONE - WALL MOUNTED AT 48" AFF. SURFACE MOUNTED UNLESS OTHERWISE NOTED. EXISTING TYPE INCLUDES BOX WITH HANGSET. NEW TYPE SHALL BE SIMPLEXGRINELL 4054 - MATCH CLOMMAN STANDARD.
- SK** KEY SWITCH - 120V, TYCO FIRE PRODUCTS ZONE CHECK SERIES. MOUNT AT 80" AFF.

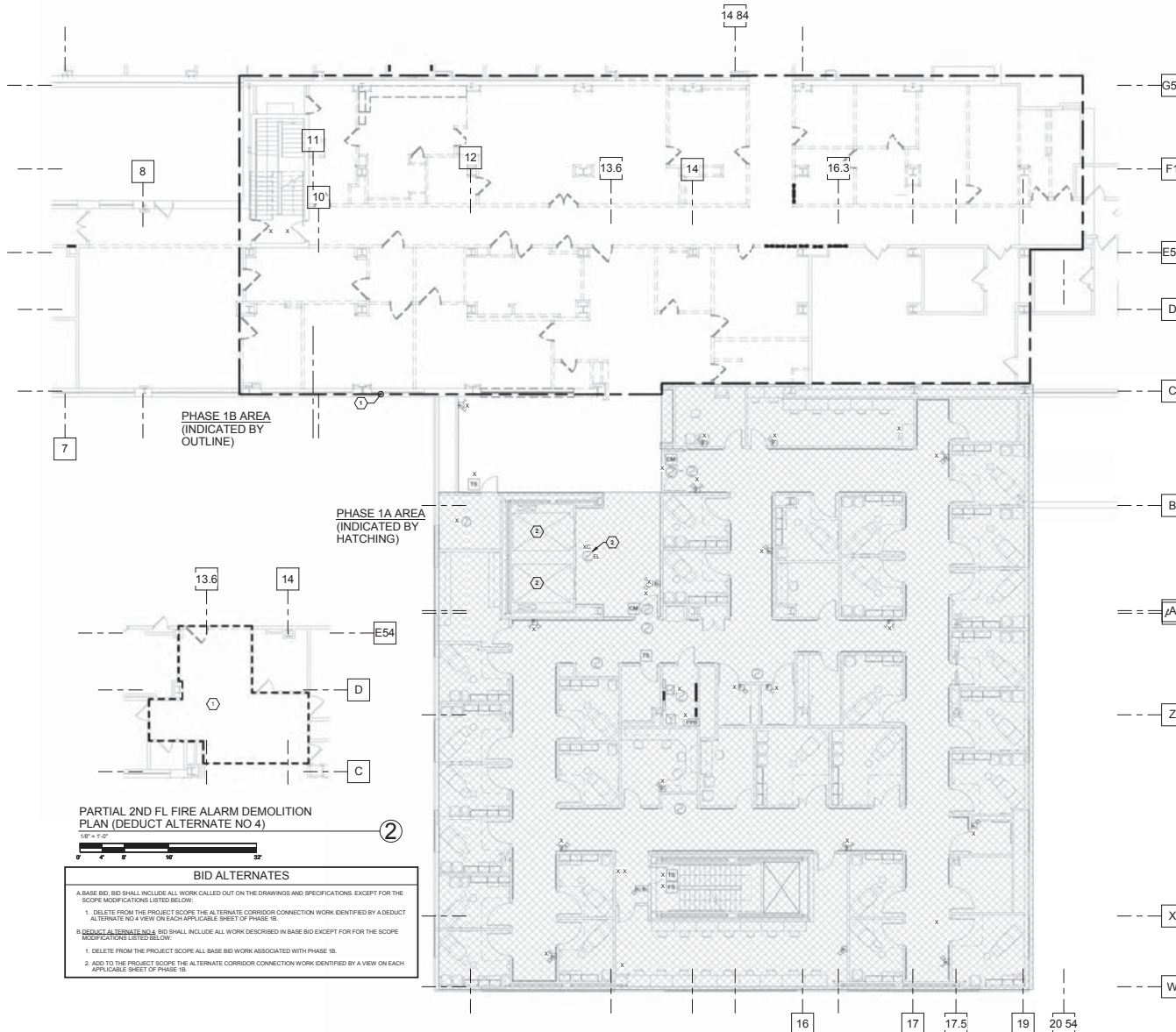
FIRE ALARM GENERAL NOTES:

- PROVIDE A 2-GANG MINIMUM SEE BACKBOX FOR ALL OF THE ABOVE FIRE ALARM DEVICES. ALL FIRE ALARM SYSTEM CONDUCTORS SHALL BE INSTALLED IN 1/2" MINIMUM SIZE COMPLETE CONDUIT SYSTEM WITH COLOR CODED WIRING AS INDICATED ON SHOP DRAWINGS PREPARED BY SIMPLEXGRINELL - MANTION HOSPITAL COLOR CODING. ALL NETWORK AND DATA CABLES SHALL BE "COMMUNICATION GRADE" TYPE CABLE. FURNISH, INSTALL AND CONNECT ALL FIRE ALARM DEVICES IN ACCORDANCE WITH WIRING DIAGRAMS AS PREPARED BY SIMPLEXGRINELL.
- REFER TO ELECTRICAL LEGEND FOR ADDITIONAL SYMBOLS, ABBREVIATIONS, AND GENERAL NOTES.

FIRE ALARM LEGEND
NOT TO SCALE

CONSTRUCTION BID DOCUMENTS FULLY SPRINKLERED

CONSULTANTS: FREDERICK E. REINSEL & HELLER ENGINEERS, INC. 10000 WILSON AVENUE ANN ARBOR, MI 48106		ARCHITECTS/ENGINEERS: ARCHITECTURAL PROJECT # 18500 CBLH 7850 Freeway Circle 440.243.2000 T Cleveland, OH 44130 440.243.3305 F		Drawing Title FIRE ALARM LEGEND AND DETAILS Approved: Project Director		Project Title VA Pittsburgh Healthcare System UD, EXPAND MEDICAL AND SURGICAL CLINICS Location UNIVERSITY DRIVE DIVISION Date 05/06/2014 Checked MPL Drawn TAG		Project Number 646-372 Building Number Drawing Number FA0-1 Des. of		Office of Construction and Facilities Management 	
---	--	---	--	---	--	--	--	--	--	---	--



- FIRE ALARM DEMOLITION GENERAL NOTES**
- 01 ALL EXISTING FIRE ALARM DEVICES, CONDUIT, WIRING, ETC. THAT WILL NOT BE REUSED IN THE DEMOLISHED INSTALLATION SHALL BE REMOVED UNLESS OTHERWISE NOTED. THIS DEMOLITION SHALL INCLUDE ALL ELECTRICAL ITEMS SHOWN ON THIS PLAN THAT ARE IDENTIFIED BY "X" AND/OR "XN" AND ALL OTHER ADDITIONAL ITEMS THAT ARE NOT SHOWN BUT THAT MUST BE REMOVED IN ORDER TO PRODUCE A NEAT, FINISHED, PROPERLY FUNCTIONING ELECTRICAL INSTALLATION. MAINTAIN CIRCUIT CONTINUITY TO ALL EXISTING REUSED ELECTRICAL SYSTEM COMPONENTS - PROVIDE ALL CONDUIT AND WIRING NECESSARY TO ACHIEVE THE SAME. THE CONTRACTOR SHALL FIELD VERIFY THE NATURE AND EXTENT OF ALL DEMOLITION WORK AND SHALL INCLUDE COST FOR THE SAME IN THE BID SUBMITTAL.
 - 02 ALL EXISTING REMOVED EQUIPMENT, DEVICES, ETC. THAT ARE NOT RETAINED BY THE OWNER SHALL BE DISPOSED OF BY THE CONTRACTOR.
 - 03 MAINTAIN CIRCUIT CONTINUITY TO ALL FIRE ALARM SYSTEM COMPONENTS IN AREAS NOT BEING DEMOLISHED UNLESS OTHERWISE NOTED. PROVIDE ALL CONDUIT AND WIRING EXTENSIONS NECESSARY TO ACHIEVE SAME.
 - 04 REFER TO FIRE ALARM AND ELECTRICAL LEGEND FOR ALL SYMBOLS, DESIGNATIONS. NOTE SPECIAL ATTENTION TO EXISTING DEVICES, WIRERAYS, ETC. MARKED XN, XNR OR XN AND REMOVE/BLANK OFF, RELOCATE OR REPLACE THESE COMPONENTS AS REQUIRED.
- FIRE ALARM DEMOLITION CODED NOTES:**
- ① REMOVE ALL EXISTING FIRE ALARM DEVICES AND ASSOCIATED CONDUIT AND WIRING COMPLETE WITHIN THE OUTLINED DEMOLITION AREA UNLESS OTHERWISE NOTED.
 - ② MAINTAIN ALL DEVICES, CONDUIT, WIRING ETC. ASSOCIATED WITH EXISTING ELEVATORS.

PARTIAL 2ND FL FIRE ALARM DEMOLITION PLAN (DEDUCT ALTERNATE NO 4)

BID ALTERNATES

A. BASE BID SHALL INCLUDE ALL WORK CALLED OUT ON THE DRAWINGS AND SPECIFICATIONS, EXCEPT FOR THE SCOPE MODIFICATIONS LISTED BELOW:

1. DELETE FROM THE PROJECT SCOPE THE ALTERNATE CORRIDOR CONNECTION WORK IDENTIFIED BY A DEDUCT ALTERNATE NO 4 VIEW ON EACH APPLICABLE SHEET OF PHASE 1B.

B. DEDUCT ALTERNATE NO 4 BID SHALL INCLUDE ALL WORK DESCRIBED IN BASE BID EXCEPT FOR THE SCOPE MODIFICATIONS LISTED BELOW:

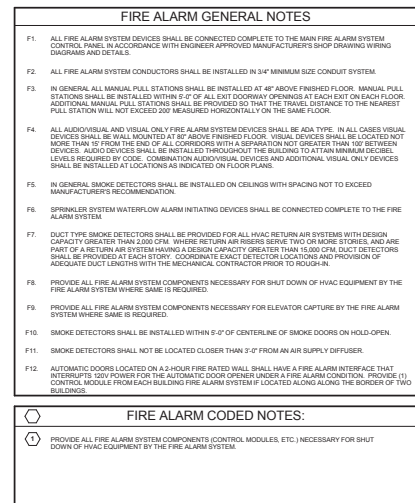
1. DELETE FROM THE PROJECT SCOPE ALL BASE BID WORK ASSOCIATED WITH PHASE 1B.
2. ADD TO THE PROJECT SCOPE THE ALTERNATE CORRIDOR CONNECTION WORK IDENTIFIED BY A VIEW ON EACH APPLICABLE SHEET OF PHASE 1B.

2ND FL FIRE ALARM DEMOLITION PLAN - PH 1B

18" x 11" ①

**CONSTRUCTION BID DOCUMENTS
FULLY SPRINKLERED**

<p>5/30/2014 8:06:54 AM Z:\V Documents\10116 EPH CF_10003.dwt</p> <p>CONSTRUCTION BID DOCUMENTS 05/09/2014</p> <p>Revisions</p>	<p>CONSULTANTS:</p> <p>FREDERICK L. REUBEN & SELLER ENGINEERS, INC.</p> <p>10000 W. 10TH AVE. SUITE 200</p> <p>MINNEAPOLIS, MN 55425</p> <p>2ND FLOOR PLAN</p> <p>KEY PLAN</p>	<p>ARCHITECTS/ENGINEERS:</p> <p>ARCHITECTURAL PROJECT # 18500</p> <p>CBLH</p> <p>7850 Freeway Circle Cleveland, OH 44130</p> <p>440.243.2000 1 440.243.3305 1</p> <p>Architecture Planning Interior Design</p>	<p>Drawing Title</p> <p>2ND FL FIRE ALARM DEMOLITION PLAN - PH 1B</p> <p>Approved: Project Director</p>	<p>Project Title</p> <p>VA Pittsburgh Healthcare System</p> <p>UD, EXPAND MEDICAL AND SURGICAL CLINICS</p> <p>Location</p> <p>UNIVERSITY DRIVE DIVISION</p> <p>Date</p> <p>05/06/2014</p> <p>Checked</p> <p>MPL</p> <p>Drawn</p> <p>TWM</p> <p>Dwg. of</p> <p>Project Number</p> <p>646-372</p> <p>Building Number</p> <p>Drawing Number</p> <p>FA1-2</p> <p>Office of Construction and Facilities Management</p> <p>Department of Veterans Affairs</p>
---	--	--	---	---



GENERAL LEGEND

- ① CODED NOTE - "1" INDICATES NOTE NUMBER.
- MECHANICAL EQUIPMENT IDENTIFIER
- 1
1-ED1 DETAIL REFERENCE - "1" INDICATES DETAIL NUMBER, "1-ED1" INDICATED DRAWINGS NUMBER.
- COLUMN GRID
- REVISION REFERENCE NUMBER

LOW VOLTAGE SYSTEM LEGEND

- PAGE PUBLIC ADDRESS AMPLIFIER - PROVIDE NEW PUBLIC ADDRESS AMPLIFIER - CONNECT TO EXISTING PUBLIC ADDRESS SYSTEM PER SPECIFICATIONS 275116.
- PAGING SYSTEM SPEAKER - RECESS MOUNTED IN LAY-IN GRID CEILING, MATCH EXISTING TYPE. PROVIDE BACKBOX AND TILE BRIDGE. "S" INDICATES ZONE, CONNECT SO THAT ALL SPEAKERS IN ZONE "S" ARE CONTROLLED BY VOLUME CONTROL SWITCH \$VCS.
- PUBLIC ADDRESS SYSTEM VOLUME CONTROL WITH BYPASS RELAY. "S" INDICATES LOCAL PAGING SYSTEM SPEAKER VOLUME CONTROL.
- MASTER ANTENNA TELEVISION OUTLET (MATV) - CEILING MOUNTED OR WALL MOUNTED AS NOTED ON DRAWINGS. PROVIDE 2 GANG FLUSH BOX WITH 1 GANG RAISED COVER WITH 1" CONDUIT TO ABOVE FINISHED CEILING - STUB AND BUSH. PROVIDE NEW MATV OUTLET TO MATCH EXISTING TYPE AND INSTALL (1) RG-6 COAX CABLE PER OUTLET TO EXISTING NETWORK. PROVIDE NEW NETWORK TAPS AS NECESSARY. SUPPORT CABLES USING 1" HOODS ON CENTER OR EXISTING CABLE TRAY, WHERE AVAILABLE. TEST COMPLETE INSTALLATION IN ACCORDANCE WITH VA STANDARDS. COORDINATE WORK WITH VA ENGINEERING DEPARTMENT. TECHNOLOGY CONTRACTOR SHALL PERFORM ALL WORK SO AS TO BE 100% COMPLIANT WITH ANY/ALL LOCAL, STATE AND FEDERAL REGULATIONS THAT MAY APPLY TO THIS INSTALLATION, INCLUDING BUT NOT LIMITED TO NATIONAL ELECTRIC CODE AND FCC REGULATIONS. CONTRACTOR SHALL BE RESPONSIBLE TO ALIGN AND BALANCE THE DISTRIBUTION SYSTEM PRIOR TO CUT-IN TO THE EXISTING SYSTEM. CONTRACTOR SHALL BE RESPONSIBLE TO TIME TUNE AMPLIFIER ADJUSTMENTS AFTER CUT-IN. CONTRACTOR SHALL COORDINATE ALL ALIGNMENT AND BALANCING WITH OWNER'S PERSONNEL.
- INTERCOM STATION - EXTEND EXISTING SYSTEM AS REQUIRED.

- LOW VOLTAGE SYSTEM NOTES:
- REFER TO TECHNOLOGY DETAILS FOR ADDITIONAL INFORMATION.
 - REFER TO SPECIFICATIONS FOR ADDITIONAL REQUIREMENTS.
 - INTERCOM STATIONS SYSTEM EQUIPMENT AND WIRING SHALL BE PROVIDED BY CONTRACTOR. CONTRACTOR SHALL VERIFY ALL BACKBOX SIZES WITH VA COTR AND MANUFACTURER'S INSTALLATION INSTRUCTIONS PRIOR TO ROUGH-IN.
 - MOUNT DEVICES AT MOUNTING HEIGHTS LISTED ABOVE UNLESS OTHERWISE NOTED ON THE FLOOR PLANS. COORDINATE EXACT MOUNTING LOCATION WITH ARCHITECTURAL ELEVATIONS.

TELECOMMUNICATIONS LEGEND

- TELECOMMUNICATIONS OUTLET "TCO" - MOUNTED AT 18" AFF UNLESS OTHERWISE NOTED. REFER TO TELECOMMUNICATIONS OUTLET DETAILS ON SUBSEQUENT DRAWING FOR REQUIREMENTS.
- PATIENT MONITORING OUTLET - WALL MOUNTED, COORDINATE WITH MONITOR MOUNTING BRACKET. REFER TO PATIENT MONITORING OUTLET DETAILS ON SUBSEQUENT DRAWING FOR REQUIREMENTS.
- TELECOMMUNICATIONS OUTLET "TCO" - FLOOR MOUNTED. REFER TO TELECOMMUNICATIONS OUTLET DETAILS ON SUBSEQUENT DRAWING FOR REQUIREMENTS.
- TELEPHONE OUTLET - MOUNTED AT 48" AFF UNLESS OTHERWISE NOTED.
- TELECOMMUNICATIONS OUTLET "TCO" - ROUGH-IN ONLY (BACKBOX AND CONDUIT STUBBED TO ABOVE FINISHED CEILING).
- WIRELESS ACCESS OUTLET - MOUNTED ABOVE FINISHED CEILING. PROVIDE 20' FT OF COILED CABLE SLACK FOR FIELD ADJUSTMENT.
- 18" W x 4" D MINIMUM SIZE CABLE TRAY WIRE MANAGEMENT SYSTEM. MOUNTED ABOVE ACCESSIBLE CEILING. COORDINATE LOCATION WITH OTHER TRACES. MAINTAIN 6" WORKING CLEARANCE ABOVE AND BELOW CABLE TRAY AT ALL LOCATIONS. FULLY COVERED, MECHANICALLY AND PHYSICALLY PARTITIONED FOR MULTIPLE ELECTRONIC CIRCUIT USE, AND BE UL CERTIFIED AND LABELED FOR USE WITH TELECOMMUNICATIONS CIRCUITS AND/OR SYSTEMS.
- TELECOMMUNICATION CONNECTION WALL BOX FOR PRE-WIRED FURNITURE - 4" SQ. JUNCTION BOX MOUNTED AT 18" AFF FOR TELECOMMUNICATIONS CONNECTION TO "TCO'S" IN FURNITURE. VERIFY THE QUANTITY OF TOO CABLES REQUIRED FOR FURNITURE. OWNER SHALL TERMINATE ALL TOO CABLES.
- TECHNOLOGY GROUNDING BUSBAR - REFER TO TECHNOLOGY DETAILS FOR ADDITIONAL INFORMATION.

- TELECOMMUNICATIONS SYSTEM NOTES:
- REFER TO TECHNOLOGY DETAILS FOR ADDITIONAL INFORMATION.
 - REFER TO SPECIFICATIONS FOR ADDITIONAL INFORMATION.
 - CONTRACTOR SHALL PROVIDE DEVICES, CABLEING, TESTING, AND TERMINATIONS. TEST COMPLETE INSTALLATION IN ACCORDANCE WITH VA STANDARDS AND SPECIFICATIONS.

ABBREVIATIONS

AC ABOVE COUNTER AT 9" UNLESS OTHERWISE NOTED	AFC ABOVE FINISHED CEILING
AF AMP FRAME	AT AMP TRIP
AFF ABOVE FINISHED FLOOR	ATS AUTOMATIC TRANSFER SWITCH
CM CEILING MOUNTED	COTR CONTRACTING OFFICER/TECHNICAL REPRESENTATIVE
EO ELECTRICAL CONTRACTOR	EG EQUIPMENT GROUND
EOL END OF LINE	EWIC ELECTRIC WATER COOLER
GC GENERAL CONTRACTOR	GFCI GROUND FAULT CIRCUIT INTERRUPTER
IG ISOLATED GROUND	IRM INFORMATION RESOURCES MANAGEMENT
MC MECHANICAL CONTRACTOR	MCB MAIN CIRCUIT BREAKER
MLO MAIN LUGS ONLY	NEC NATIONAL ELECTRICAL CODE
NF NOT FUSED	SM SURFACE MOUNTED
TC TELECOMMUNICATIONS CONTRACTOR	TCC TEMPERATURE CONTROLS CONTRACTOR
TV TELEVISION	VSC VARIABLE SPEED MOTOR CONTROLLER
WP WEATHERPROOF ENCLOSURE - NEMA 4 TYPE	
X EXISTING OUTLET, DEVICE, LIGHTING FIXTURE, CONDUIT, ETC. - TO REMAIN	
XB INDICATES EXISTING OUTLET, LIGHTING FIXTURE, CONDUIT, ETC. - TO BE REMOVED. PROVIDE BLANK COVER FOR OUTLET AND MAINTAIN CIRCUIT CONTINUITY.	
XL NEW LOCATION OF EXISTING OUTLET, DEVICE, LIGHTING FIXTURE, ETC.	
XN EXISTING OUTLET, DEVICE, LIGHTING FIXTURE, ETC. - TO BE REPLACED WITH NEW OF SPECIFIED TYPE	
XRR EXISTING OUTLET, DEVICE, LIGHTING FIXTURE, CONDUIT, ETC. - TO BE REMOVED COMPLETE- MAINTAIN CIRCUIT CONTINUITY TO ADJACENT OUTLETS, EXTEND CONDUIT AND WIRING AS REQUIRED.	
XRRR EXISTING OUTLET, DEVICE, LIGHTING FIXTURE, ETC. - TO BE REMOVED AND REINSTALLED AT NEW LOCATION - EXTEND CONDUIT AND WIRING AS REQUIRED	
XC REINSTALL EXISTING CEILING MOUNTED DEVICE IN NEW CEILING AND RECONNECT COMPLETE	
VAMC VETERANS AFFAIRS MEDICAL CENTER	

NURSE CALL SYSTEM LEGEND

- BATH SWITCH WITH PULLCORD - NYLON PULL-CORD, LED INDICATOR, CANCEL BUTTON, WATER-RESISTANT - MOUNTED AT 30" AFF AT TOILETS AND 48" AFF AT SHOWERS INTO 4" SQ. x 2 1/2" MIN. DEPTH BOX FITTED WITH 1-GANG RAISED PLASTER RING.
 - DOVE LIGHT - 6-LAMP TYPE CEILING MOUNTED INTO 4" SQ. x 2 1/2" MIN. DEPTH BOX FITTED WITH 1-GANG RAISED PLASTER RING.
- NURSE CALL SYSTEM NOTES:
- CONTRACTOR SHALL PROVIDE STAND ALONE SYSTEM.
 - MOUNT DEVICES AT MOUNTING HEIGHTS LISTED ABOVE UNLESS OTHERWISE NOTED ON THE FLOOR PLANS. COORDINATE EXACT MOUNTING LOCATION WITH ARCHITECTURAL ELEVATIONS.
 - CONTRACTOR SHALL VERIFY ALL BACKBOX SIZES WITH VA COTR AND MANUFACTURER'S INSTALLATION INSTRUCTIONS PRIOR TO ROUGH-IN.
 - ALL NURSE CALL SYSTEM CONDUITS SHALL BE INSTALLED IN 3/4" MINIMUM SIZE COMPLETE CONDUIT SYSTEM AS INDICATED ON SHOP DRAWINGS PREPARED BY MANUFACTURER. FURNISH, INSTALL AND CONNECT ALL NURSE CALL DEVICES IN ACCORDANCE WITH WIRING DIAGRAMS AS PREPARED BY MANUFACTURER. RETAIN MANUFACTURER TO PROGRAM SYSTEM TO PROPERLY ANNUNCIATE ALL ZONES. COORDINATE EXACT LOCATION WITH ARCHITECTURAL ELEVATIONS. REFER TO SPECIFICATIONS FOR ADDITIONAL REQUIREMENTS.

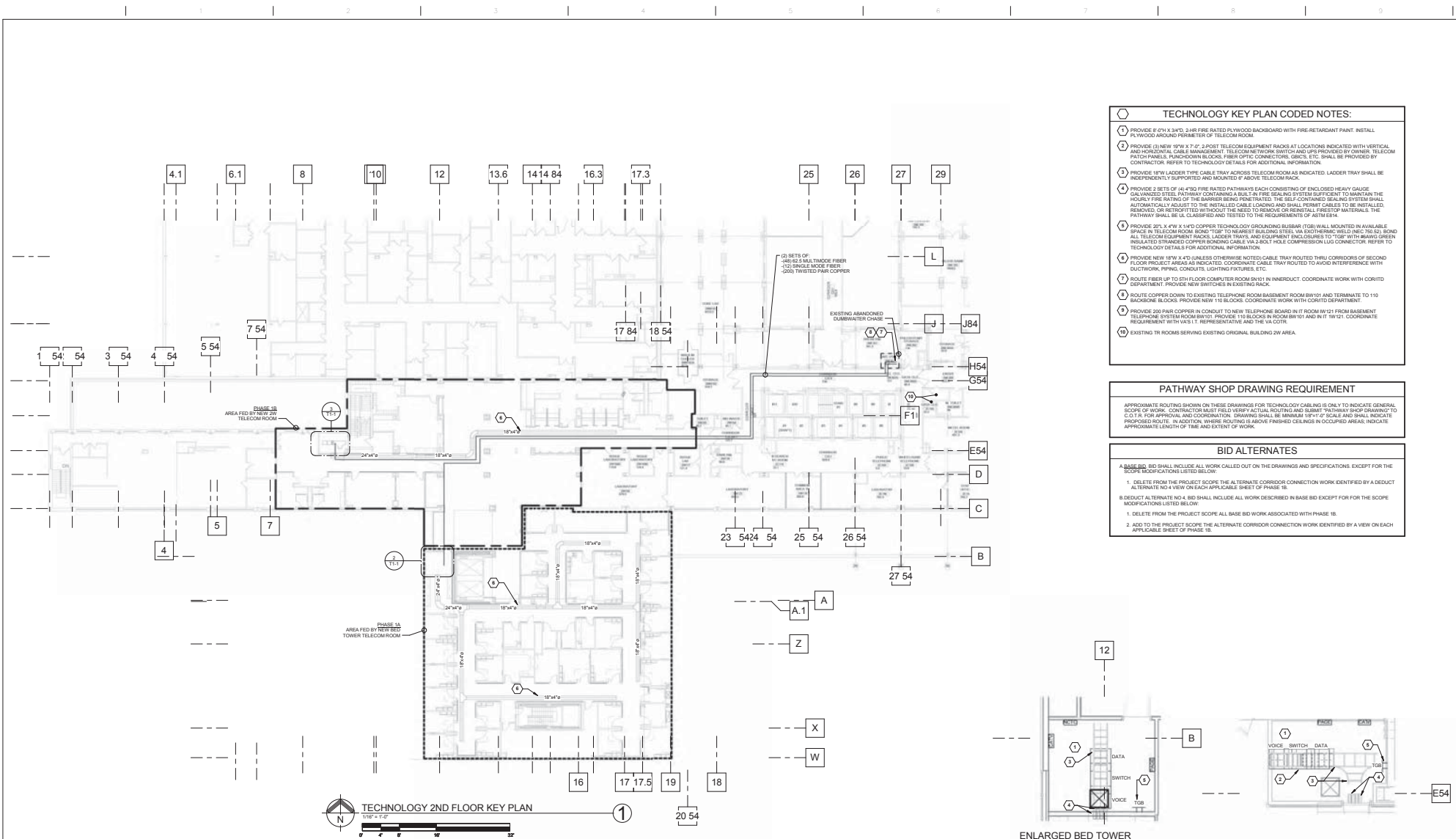
SECURITY SYSTEM LEGEND

- ACCESS CONTROLLED DOOR TYPE 1 - EC SHALL PROVIDE CARD READER ROUGH-IN, CONNECT ELECTRIC HINGE, PROVIDE DOOR CONTACTS. REFER TO "ACCESS CONTROLLED DOOR TYPE 1 DETAIL".
- ACCESS CONTROLLED DOOR TYPE 2 - EC SHALL PROVIDE CARD READER ROUGH-IN, CONNECT ELECTRIC HINGE, PROVIDE DOOR CONTACTS. REFER TO "ACCESS CONTROLLED DOOR TYPE 2 DETAIL".
- ACCESS CONTROLLED DOOR TYPE 3 - EC SHALL PROVIDE CARD READER ROUGH-IN, PUSH-TO-EXIT BUTTON ROUGH-IN, PROVIDE DOOR CONTACTS. REFER TO "ACCESS CONTROLLED DOOR TYPE 3 DETAIL".

- SECURITY SYSTEM NOTES:
- PROVIDE MINIMUM SIZE BACKBOX AS REQUIRED FOR ALL OF THE ABOVE SECURITY DEVICES AND INSTALL IN 1/2" MINIMUM COMPLETE CONDUIT SYSTEM. THE ELECTRICAL CONTRACTOR SHALL PROVIDE ALL ROUGH-INS IN ACCORDANCE WITH THE TECHNOLOGY DETAILS WIRING DIAGRAMS. REFER TO THE "ACCESS-CONTROLLED DOOR DETAILS" ON THE TECHNOLOGY DETAILS DRAWING FOR ADDITIONAL INFORMATION.

CONSTRUCTION BID DOCUMENTS FULLY SPRINKLERED

CONSTRUCTION BID DOCUMENTS 05/30/2014 Date	CONSULTANTS: 2ND FLOOR PLAN KEY PLAN	 11016	ARCHITECTS/ENGINEERS: ARCHITECTURAL PROJECT # 18500 7850 Freeman Circle 440 243 2000 1 Cleveland, OH 44130 440 243 3305 1	Drawing Title TECHNOLOGY LEGEND Approved: Project Director	Project Title VA Pittsburgh Healthcare System UD, EXPAND MEDICAL AND SURGICAL CLINICS Location UNIVERSITY DRIVE DIVISION Date 05/06/2014 Checked Drawn	Project Number 640-372 Building Number Drawing Number T0-1 Dept. of Veterans Affairs
--	---	-----------	---	--	---	---

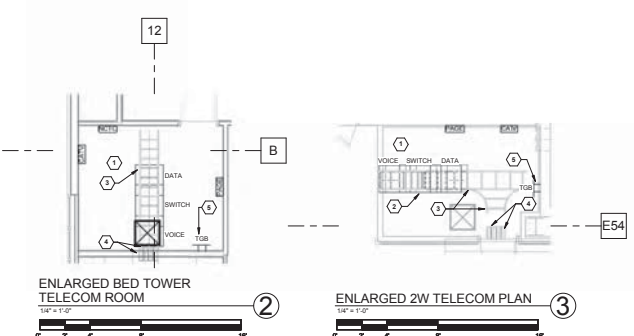


- TECHNOLOGY KEY PLAN CODED NOTES:**
- ① PROVIDE 8' 0" X 3' 0" 24HR FIRE RATED PLYWOOD BACKBOARD WITH FIRE-RETARDANT PAINT. INSTALL IN TWO'S GROUP AND PERIMETER OF TELECOM ROOM.
 - ② PROVIDE (1) NEW 19" W X 7' 0" 2-POST TELECOM EQUIPMENT RACKS AT LOCATIONS INDICATED WITH VERTICAL AND HORIZONTAL CABLE MANAGEMENT. TELECOM NETWORK SWITCH AND UPS PROVIDED BY OWNER. TELECOM PATCH PANELS, RACKMOUNT BLOCKS, FIBER OPTIC CONNECTORS, GIGS, ETC. SHALL BE PROVIDED BY CONTRACTOR. REFER TO TECHNOLOGY DETAILS FOR ADDITIONAL INFORMATION.
 - ③ PROVIDE 18" W LADDER TYPE CABLE TRAY ACROSS TELECOM ROOM AS INDICATED. LADDER TRAY SHALL BE INDEPENDENTLY SUPPORTED AND MOUNTED 4" ABOVE TELECOM RACK.
 - ④ PROVIDE 2 SETS OF (4) 4" 30 FIRE RATED PATHWAYS EACH CONSISTING OF ENCLOSED HEAVY GAUGE GALVANIZED STEEL PATHWAY CONTAINING A BUILT IN FIRE SEALING SYSTEM SUFFICIENT TO MAINTAIN THE HOURLY FIRE RATING OF THE BARRIER BEING PENETRATED. THE SELF-CONTAINED SEALING SYSTEM SHALL AUTOMATICALLY ADJUST TO THE INSTALLED CABLE LOADING AND SHALL PERMIT CABLES TO BE INSTALLED, REMOVED, OR RETROFITTED WITHOUT THE NEED TO REMOVE OR REINSTALL FIRESTOP MATERIALS. THE PATHWAY SHALL BE UL CLASSIFIED AND TESTED TO THE REQUIREMENTS OF ASTM E2134.
 - ⑤ PROVIDE 20' L X 4' W X 1/4" COPPER TECHNOLOGY GROUNDING BUSBAR (TGB) WALL MOUNTED IN AVAILABLE SPACE IN TELECOM ROOM. BOND "TOP" TO NEAREST BUILDING STEEL VIA EXOTHERMIC WELD (NEC 700.52). BOND ALL TELECOM EQUIPMENT RACKS, LADDER TRAYS, AND EQUIPMENT ENCLOSURES TO TGB WITH BRASS GREEN INSULATED STRANDED COPPER BONDING CABLE VIA 3-BOLT HOLE COMPRESSION LUG CONNECTOR. REFER TO TECHNOLOGY DETAILS FOR ADDITIONAL INFORMATION.
 - ⑥ PROVIDE NEW 18" W X 4' D (UNLESS OTHERWISE NOTED) CABLE TRAY ROUTED THRU CORRIDORS OF SECOND FLOOR PROJECT AREA AS INDICATED. COORDINATE CABLE TRAY ROUTED TO AVOID INTERFERENCE WITH DUCTWORK, PIPING, CONDUITS, LIGHTING FIXTURES, ETC.
 - ⑦ ROUTE FIBER UP TO 5TH FLOOR COMPUTER ROOM BN101 IN INNERDUCT. COORDINATE WORK WITH CORVID DEPARTMENT. PROVIDE NEW SWITCHES IN EXISTING RACK.
 - ⑧ ROUTE COPPER DOWN TO EXISTING TELEPHONE ROOM BASEMENT ROOM BN101 AND TERMINATE TO 110 BACKBONE BLOCKS. PROVIDE NEW 110 BLOCKS. COORDINATE WORK WITH CORVID DEPARTMENT.
 - ⑨ PROVIDE 20' PAIR COPPER IN CONDUIT TO NEW TELEPHONE BOARD IN IT ROOM BN121 FROM BASEMENT TELEPHONE SYSTEM ROOM BN101. PROVIDE 110 BLOCKS IN ROOM BN101 AND IN IT 1W 121. COORDINATE REQUIREMENT WITH V&E I REPRESENTATIVE AND THE VA CDR.
 - ⑩ EXISTING TR ROOMS SERVING EXISTING ORIGINAL BUILDING 2W AREA.

PATHWAY SHOP DRAWING REQUIREMENT

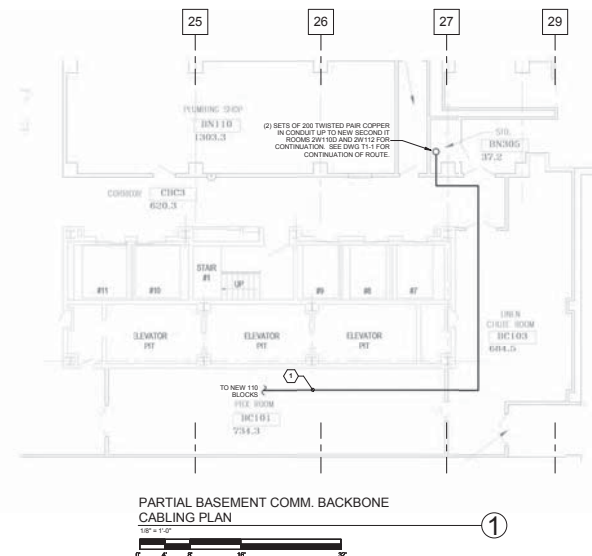
APPROXIMATE ROUTING SHOWN ON THESE DRAWINGS FOR TECHNOLOGY CABLEING IS ONLY TO INDICATE GENERAL SCOPE OF WORK. CONTRACTOR MUST FIELD VERIFY ACTUAL ROUTING AND SUBMIT "PATHWAY SHOP DRAWING" TO CDR VA FOR APPROVAL AND COORDINATION. DRAWING SHALL BE IMMEDIATE 1/8" SCALE AND SHALL INDICATE PROPOSED ROUTE. IN ADDITION, WHERE ROUTING IS ABOVE FINISHED CEILING IN OCCUPIED AREAS, INDICATE APPROXIMATE LENGTH OF TIME AND EXTENT OF WORK.

- BID ALTERNATES**
- A BASE BID, BID SHALL INCLUDE ALL WORK CALLED OUT ON THE DRAWINGS AND SPECIFICATIONS, EXCEPT FOR THE SCOPE MODIFICATIONS LISTED BELOW:
1. DELETE FROM THE PROJECT SCOPE THE ALTERNATE CORRIDOR CONNECTION WORK IDENTIFIED BY A DEDUCT ALTERNATE NO 4 VIEW ON EACH APPLICABLE SHEET OF PHASE 1B.
 2. DEDUCT ALTERNATE NO 4, BID SHALL INCLUDE ALL WORK DESCRIBED IN BASE BID EXCEPT FOR THE SCOPE MODIFICATIONS LISTED BELOW:
 1. DELETE FROM THE PROJECT SCOPE ALL BASE BID WORK ASSOCIATED WITH PHASE 1B.
 2. ADD TO THE PROJECT SCOPE THE ALTERNATE CORRIDOR CONNECTION WORK IDENTIFIED BY A VIEW ON EACH APPLICABLE SHEET OF PHASE 1B.



CONSTRUCTION BID DOCUMENTS FULLY SPRINKLERED

<p>CONSTRUCTION BID DOCUMENTS</p> <p>05/09/2014</p> <p>Revisions</p>	<p>CONSULTANTS:</p> <p>FREDERICK, KELLER & MILLER ENGINEERS, INC. ARCHITECTURAL, INTERIOR DESIGN (616) 233-2222</p> <p>2ND FLOOR PLAN</p> <p>KEY PLAN</p>	<p>ARCHITECTS/ENGINEERS:</p> <p>ARCHITECTURAL PROJECT # 18500</p> <p>CBLH Architecture Planning Interior Design</p> <p>7850 Freeway Circle 440.243.2000 T Cleveland, OH 44130 440.243.3305 F</p> <p>STATE OF OHIO REGISTERED PROFESSIONAL ENGINEER No. 95929</p>	<p>Drawing Title</p> <p>2ND FL TECHNOLOGY KEY PLAN</p> <p>Approved: Project Director</p>	<p>Project Title</p> <p>VA Pittsburgh Healthcare System UD, EXPAND MEDICAL AND SURGICAL CLINICS</p> <p>Location</p> <p>UNIVERSITY DRIVE DIVISION</p> <p>Date</p> <p>05/06/2014</p> <p>Checked</p> <p>MPL</p> <p>Drawn</p> <p>TWM</p>	<p>Project Number</p> <p>646-372</p> <p>Building Number</p> <p></p> <p>Drawing Number</p> <p>T1-1</p> <p>Day of</p> <p></p> <p>Office of Construction and Facilities Management</p> <p>Department of Veterans Affairs</p>
--	---	---	---	--	---



CODED NOTES

1. PROVIDE (2) SETS OF 200 TWISTED PAIR COPPERS IN CONDUIT TO NEAR TELEPHONE BLOBS IN ROOM 2W1105D AND 7W1120 FROM MGMTMENT TELEPHONE SYSTEM ROOM B1W115. PROVIDE NEW 1" BLOBS IN ROOM B1W115 AND 1" BLOBS 2W1105D AND 7W1120 TO CONDUIT REQUIREMENTS WITH VAS 1. REPRESENTATIVE AND 1" PROVIDE.

2. PROVIDE (2) SETS OF (48) 62.5 AND 120 SINGLE MODE FIBER FROM COMPUTER ROOM B1W115 DOWN TO NEW 1" BLOBS IN ROOM B1W115. PROVIDE NEW 1" BLOBS IN ROOM B1W115. PROVIDE FIBER OPTIC CONNECTORS AND PATCHES IN COMPUTER ROOM B1W115 IN EXISTING FIBER OPTIC RACKS.

PATHWAY SHAP DRAWING REQUIREMENT

APPROXIMATE ROUTING SHOWN ON THESE DRAWINGS FOR TECHNOLOGY CABLING IS ONLY TO INDICATE APPROXIMATE ROUTING. THE SHAP DRAWING IS NOT TO BE USED FOR THE SHAP DRAWING TO C.O.T. FOR APPROVAL AND CONSTRUCTION. DRAWING SHALL BE FINISHED 100% IN SCALED AND APPROXIMATE PROPORTIONS. APPROXIMATE LENGTHS AND EXTENT OF WORK.

		CONSULTANTS:		ARCHITECTS/ENGINEERS:		ARCHITECTURAL PROJECT # 18500		Drawing Title		Project Title		Project Number		Office of Construction and Facilities Management			
										VA Pittsburgh Healthcare System UD, EXPAND MEDICAL AND SURGICAL CLINICS		646-372		Office of Construction and Facilities Management			
		FREDERICK, FREDERICK & HELLER ENGINEERS, INC. 44000 KENNEDY DRIVE CLEVELAND, OH 44130 Tel: 216.333.5535		2ND FLOOR PLAN KEY PLAN		7850 Freeway Circle 440.243.2000 f 440.243.3305 t		Cleveland, OH 44130 440.243.3305 t		Approved: Project Director		Location UNIVERSITY DRIVE DIVISION				Drawing Number T1-2	
CONSTRUCTION BID DOCUMENTS		05/05/2014								Date 05/05/2014		Checked MPL		Drawn TVM		 Department of Veterans Affairs	

ELECTRICAL DEMOLITION GENERAL NOTES

- D1 ALL EXISTING LIGHTING FIXTURES, RECEPTACLES, SPECIAL SYSTEMS OUTLETS, CONDUIT, WIRING ETC. THAT WILL NOT BE REUSED IN THE REMODELED INSTALLATION SHALL BE REMOVED UNLESS OTHERWISE NOTED. THIS DEMOLITION SHALL INCLUDE ALL ELECTRICAL ITEMS SHOWN ON THIS PLAN THAT ARE NOT DESIGNATED BY "X", "N" OR "NOR" AND ALL OTHER ADDITIONAL ITEMS THAT ARE NOT SHOWN BUT THAT MUST BE REMOVED IN ORDER TO PROVIDE A NEAT, FINISHED PROPERLY FUNCTIONING ELECTRICAL INSTALLATION. MAINTAIN CIRCUIT CONTINUITY TO ALL EXISTING REUSED ELECTRICAL SYSTEM COMPONENTS. PROVIDE ALL CONDUIT AND WIRING NECESSARY TO ACHIEVE THE SAME. THE CONTRACTOR SHALL FIELD VERIFY THE NATURE AND EXTENT OF ALL DEMOLITION WORK AND SHALL INCLUDE COST FOR THE SAME IN THE BID SUBMITTAL.
- D2 ALL EXISTING REMOVED ELECTRICAL EQUIPMENT, DEVICES, ETC. THAT ARE NOT RETAINED BY THE OWNER SHALL BE DISPOSED OF BY THE ELECTRICAL CONTRACTOR.
- D3 DASHED WALLS ON PLAN INDICATE EXISTING CONSTRUCTION TO BE REMOVED.
- D4 REFER TO ELECTRICAL LEGEND FOR ALL SYMBOL DESIGNATIONS. NOTE SPECIAL ATTENTION TO SELECTED EXISTING DEVICES, WIRINGWAYS, ETC. MARKED XL, XN OR XN, AND REMOVED/BLANK OFF, RELOCATE OR REPLACE THESE COMPONENTS AS REQUIRED.
- D5 MAINTAIN CIRCUIT CONTINUITY TO ALL EXISTING ELECTRICAL SYSTEM COMPONENTS IN AREAS NOT BEING REMODELED UNLESS OTHERWISE NOTED. PROVIDE ALL CONDUIT AND WIRING EXTENSIONS NECESSARY TO ACHIEVE SAME.
- D6 THE ELECTRICAL CONTRACTOR SHALL CLOSELY COORDINATE ALL ELECTRICAL DEMOLITION WORK WITH THE GENERAL AND MECHANICAL CONTRACTORS, AND SHALL DISCONNECT ALL REQUIRED CIRCUITS IN A TIMELY MANNER.

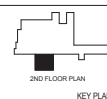
TECHNOLOGY DEMOLITION CODED NOTES

- 1 REMOVE ALL EXISTING OUTLETS, SECURITY DEVICES, PAGING SPEAKERS, EQUIPMENT, ETC. AND ASSOCIATED CONDUIT AND WIRING WITHIN THE OUTLINED DEMOLITION AREA COMPLETE UNLESS OTHERWISE NOTED. MAINTAIN EXISTING SYSTEMS SERVING AREAS OUTSIDE PROJECT SCOPE.
- 2 PROVIDE J-HOOKS SUPPORT SPACED AT EVERY 6'-0" FOR EXISTING COMMUNICATIONS CABLING IN CORRIDORS.
- 3 LOCATION OF EXISTING WIRELESS ACCESS POINT. MAINTAIN CONNECTIVITY THROUGHOUT PROJECT. PROVIDE NEW CAT6 CABLE WITH ADDITIONAL 18" BLACK TRIM FROM NEW TELECOM ROOM 2W1105 TO EXISTING LOCATION. REMOVE OLD CABLE COMPLETE UPON ACTIVATION OF TELECOM ROOM.

PHASE 1B AREA
(INDICATED BY
HATCHING)

PHASE 1A AREA
(INDICATED BY
OUTLINE)

2ND FL TECHNOLOGY DEMOLITION PLAN -
PH 1A
1/8" = 1'-0"



2ND FLOOR PLAN
KEY PLAN



ARCHITECTS/ENGINEERS:



ARCHITECTURAL PROJECT # 18500

Drawing Title
2ND FL TECHNOLOGY DEMOLITION
PLAN - PH 1A

Approved: Project Director

Project Title
VA Pittsburgh Healthcare System
UD, EXPAND MEDICAL AND
SURGICAL CLINICS

Location
UNIVERSITY DRIVE DIVISION

Date
05/06/2014

Checked
MPL

Drawn
TWM

Project Number
646-372

Building Number

Drawing Number
T2-1

Day of

Office of
Construction
and Facilities
Management



CONSTRUCTION BID DOCUMENTS	05/09/2014
Revisions	Date

CONSTRUCTION BID DOCUMENTS
FULLY SPRINKLERED

TECHNOLOGY GENERAL NOTES

1. REFER TO THE ARCHITECTURAL PLANS FOR EQUIPMENT LAYOUT. CLOSELY COORDINATE THE EXACT LOCATION OF ALL OUTLETS AND DEVICES WITH ARCHITECTURAL ELEVATIONS. ADJUST LOCATIONS AND MOUNTING HEIGHTS WHERE NECESSARY TO PREVENT INTERFERENCE WITH FURNITURE, FIXED CASEWORK, EQUIPMENT, ETC. VERIFY ALL CHANGES PRIOR TO ROUGH-IN.
2. CONTRACTOR SHALL VERIFY ALL EQUIPMENT LOCATIONS, MOUNTING HEIGHTS, AND CONNECTION REQUIREMENTS (DATA OUTLETS, ETC.) WITH EQUIPMENT VENDOR PRIOR TO ROUGH-IN.
3. ALL NEW TECHNOLOGY UTILITIES IN CORRIDORS SHALL BE ROUTED AS HIGH AS POSSIBLE.
4. REFER TO ARCHITECTURAL PLANS FOR EXACT PHASING AND ALTERNATE REQUIREMENTS.

TECHNOLOGY CODED NOTES:

1. LOCATION OF EXISTING WIRELESS ACCESS POINT. MAINTAIN CONNECTIVITY THROUGHOUT PROJECT. PROVIDE NEW CAT6 CABLE WITH ADDITIONAL LEFT SLACK FROM NEW TELECOM ROOM 2W110D TO EXISTING LOCATION. REMOVE OLD CABLE COMPLETE UPON ACTIVATION OF TELECOM ROOM.
2. FIELD COORDINATE EXACT MOUNTING LOCATION FOR OWNER PROVIDED WALL MOUNTED WORKSTATION PRIOR TO ROUGH-IN.
3. NOT USED.
4. DEVICE TO BE MOUNTED IN SYSTEM FURNITURE BACKBOX. PROVIDE JUNCTION BOX BEHIND FURNITURE AND CONNECT COMPLETE TO FURNITURE SYSTEM DEVICES. VERIFY EXACT REQUIREMENTS AND LOCATIONS WITH FURNITURE MANUFACTURER PRIOR TO ROUGH-IN. TYPICAL OF EXAM ROOMS AND DERMATOLOGY PROCEDURE ROOMS.
5. PROVIDE 1-PORT DATA OUTLET FOR PATIENT MONITORING SYSTEM. FIELD COORDINATE EXACT DATA OUTLET MOUNTING HEIGHT WITH PATIENT TRACKING MONITOR. CAT6 CABLE FROM OUTLET TO HEAD END EQUIPMENT TO BE PROVIDED AND INSTALLED BY OTHERS.

PHASE 1B AREA
(INDICATED BY
HATCHING)

PHASE 1A AREA
(INDICATED BY
OUTLINE)



2ND FL TECHNOLOGY PLAN - PH 1A
1/8" = 1'-0"



2ND FLOOR PLAN
KEY PLAN



ARCHITECTS/ENGINEERS:

CBLH
Architecture
Planning
Interior Design
7850 Freeway Circle
Cleveland, OH 44130
440.243.2000 f
440.243.3305 f

ARCHITECTURAL PROJECT # 18500

Drawing Title
2ND FL TECHNOLOGY PLAN - PH 1A

Approved: Project Director

Project Title
VA Pittsburgh Healthcare System
UD, EXPAND MEDICAL AND
SURGICAL CLINICS

Location
UNIVERSITY DRIVE DIVISION

Date
05/06/2014

Checked
MPL

Drawn
TWM

Project Number
646-372

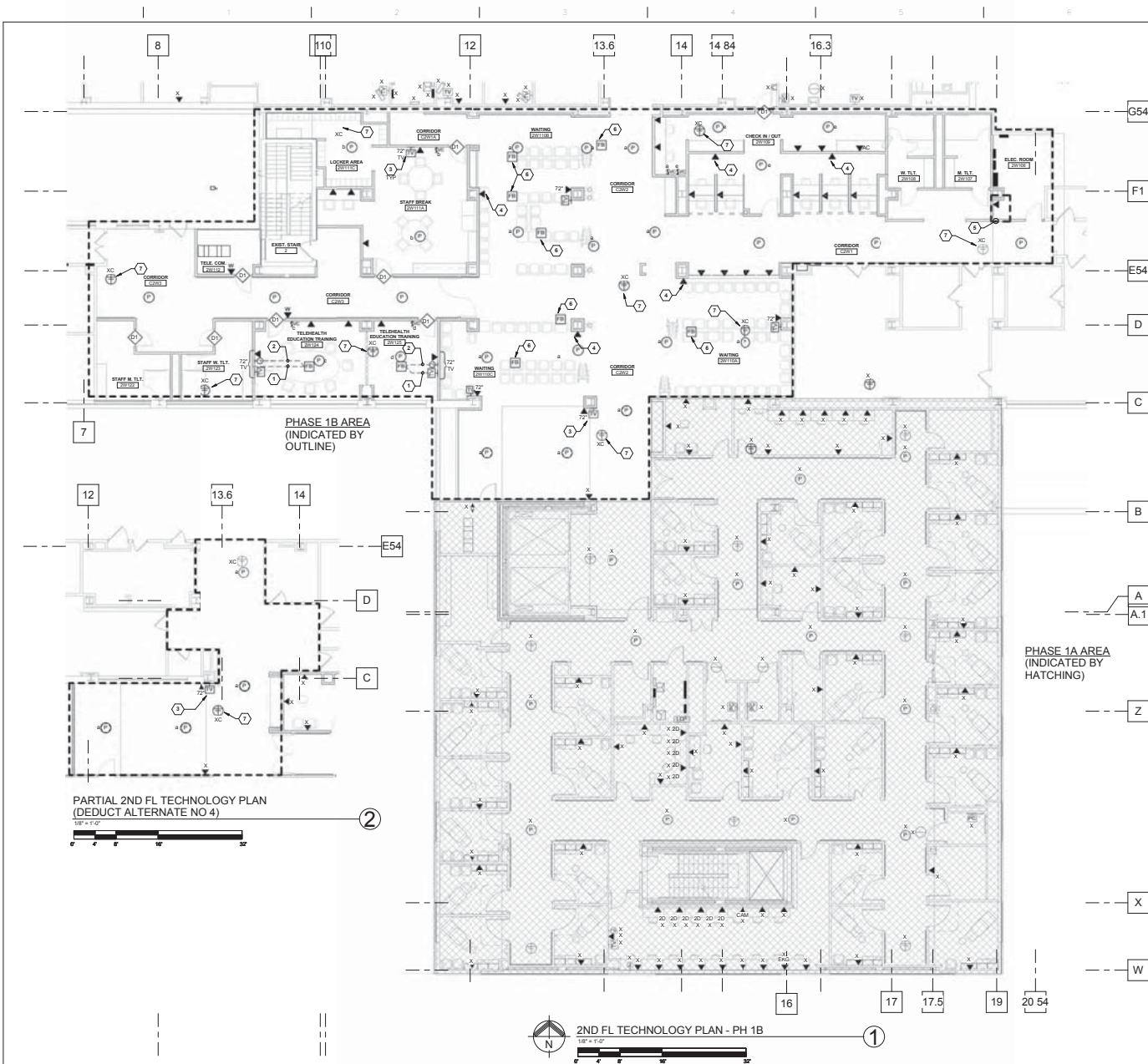
Building Number

Drawing Number
T3-1

Day of

Office of
Construction
and Facilities
Management





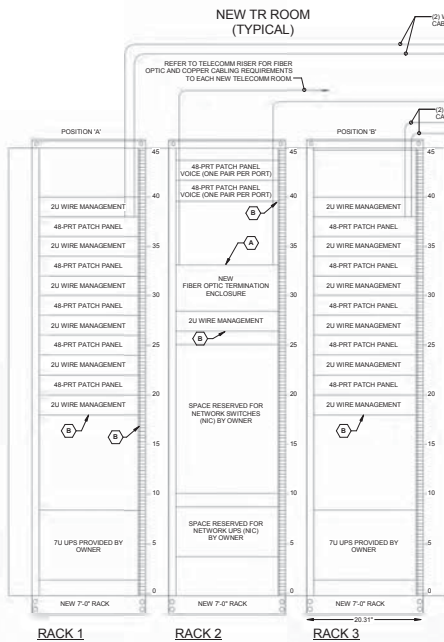
- ### TECHNOLOGY GENERAL NOTES

 - REFER TO THE ARCHITECTURAL PLANS FOR EQUIPMENT LAYOUT. CLOSELY COORDINATE THE EXACT LOCATION OF ALL OUTLETS AND DEVICES WITH ARCHITECTURAL ELEVATIONS. ADJUST LOCATIONS AND MOUNTING HEIGHTS WHERE NECESSARY TO PREVENT INTERFERENCE WITH FURNITURE, FIXED CASEWORK, EQUIPMENT, ETC. VERIFY ALL CHANGES PRIOR TO ROUGH-IN.
 - CONTRACTOR SHALL VERIFY ALL EQUIPMENT LOCATIONS, MOUNTING HEIGHTS, AND CONNECTION REQUIREMENTS (DATA OUTLETS, ETC.) WITH EQUIPMENT VENDOR PRIOR TO ROUGH-IN.
 - ALL NEW TECHNOLOGY UNITS IN CORRIDORS SHALL BE ROUTED AS HIGH AS POSSIBLE.
 - REFER TO ARCHITECTURAL PLANS FOR EXACT PHASING AND ALTERNATE REQUIREMENTS.
- ### TECHNOLOGY CODED NOTES:

 - PROVIDE CONDUIT SYSTEM (WITH PULL WIRE) FROM FIRE-RATED POKE THRU IN CONFERENCE ROOM ROUTED ABOVE FIRST FLOOR FINISHED CEILING OVER TO NEAREST SECOND FLOOR STUD WALL PARTITION. CONTINUE ROUTING UP IN WALL TO ABOVE AND FLOOR CEILING. PROVIDE TELECOM JACKS IN POKE THRU.
 - PROVIDE A CONDUIT (WITH PULL WIRE) FROM FIRE-RATED POKE THRU ROUTED ABOVE FIRST FLOOR CEILING OVER AND UP THRU WALL PARTITION TO WALL MOUNTED JUNCTION BOX BEHIND TELEVISION. ROUTE LOW VOLTAGE WIRING CABLES FROM POKE THRU TO SERVICES TO TELEVISION AND CONNECT COMPLETE. PROVIDE JUNCTION BOX COVERPLATE WITH GROMMETTED OPENING.
 - FIELD COORDINATE EXACT MOUNTING HEIGHTS OF ALL TELEVISIONS/MONITORS (MARKED TV) WITH C.O.R. PRIOR TO ROUGH-IN.
 - PROVIDE 1-PORT DATA OUTLET FOR PATIENT MONITORING SYSTEM. FIELD COORDINATE EXACT DATA OUTLET MOUNTING HEIGHT WITH PATIENT TRACKING MONITOR. CAT5 CABLE FROM OUTLET TO HEAD END EQUIPMENT TO BE PROVIDED AND INSTALLED BY OTHERS.
 - LOCATION OF PATIENT TRACKING SYSTEM HEAD END PROVIDED BY OWNER. PROVIDE DATA TOO FOR HEAD END EQUIPMENT. COORDINATE EXACT LOCATION OF HEAD END EQUIPMENT WITH C.O.R. PRIOR TO ROUGH-IN.
 - PROVIDE STANDARD QUAD DATA AND BROADBAND OUTLET FOR TELEVISION IN FLOOR BOX ROUTED ABOVE FIRST FLOOR FINISHED CEILING OVER TO NEAREST SECOND FLOOR STUD WALL PARTITION. CONTINUE ROUTING UP IN WALL TO ABOVE AND FLOOR CEILING.
 - LOCATION OF EXISTING WIRELESS ACCESS POINT. MAINTAIN CONNECTIVITY THROUGHOUT PROJECT. PROVIDE NEW CAT5 CABLE WITH ADDITIONAL LEFT BACK FROM NEW TELECOM ROOM 2W112 TO EXISTING LOCATION. REMOVE OLD CABLE COMPLETE UPON ACTIVATION OF TELECOM ROOM.

CONSULTANTS: FREDERICK R. FENNEL & MILLER ENGINEERS, INC. 10000 WILSON AVENUE ANN ARBOR, MI 48106		ARCHITECTS/ENGINEERS: CBLH 7850 Freeway Circle 440.243.2000 f Cleveland, OH 44130 440.243.3305 f		ARCHITECTURAL PROJECT # 18500 Drawing Title 2ND FL TECHNOLOGY PLAN - PH 1B Approved: Project Director		Project Title VA Pittsburgh Healthcare System UD EXPAND MEDICAL AND SURGICAL CLINICS Location UNIVERSITY DRIVE DIVISION Date 05/06/2014		Project Number 646-372 Building Number Drawing Number T3-2 Dwg. of		Office of Construction and Facilities Management 	
--	--	--	--	---	--	---	--	---	--	---	--

5/30/2014 8:07:24 AM Z:\V\Documents\10116_FPH_C\10003.dwt
 User: jfennell
 Title: 2ND FL TECHNOLOGY PLAN - PH 1B
 Date: 05/06/2014
 Time: 8:07:24 AM

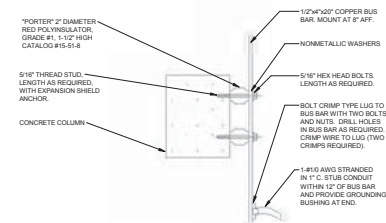


TELECOMMUNICATION ROOM - RACK AND WALLFIELD DETAIL
NOT TO SCALE

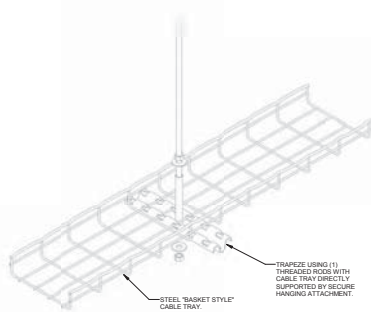
EXISTING MAIN TELEPHONE ROOM

CAT 3 RISER
110 BLOCK

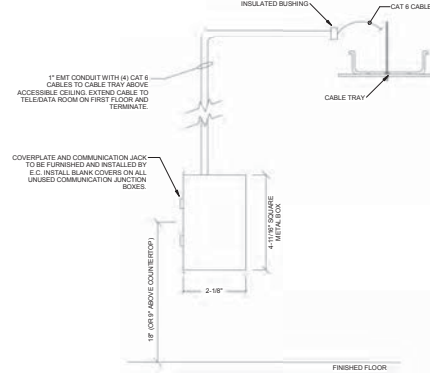
- CODED NOTES:**
- PROVIDE FIBER TERMINATION ENCLOSURE WITH CAPACITY FOR 72 "ST" TERMINATIONS. TERMINATE (24) MULTIMODE STRANDS WITH STAINLESS STEEL "ST" CONNECTORS.
 - PROVIDE PATCH PANELS, VERTICAL AND HORIZONTAL WIRE MANAGEMENT AS INDICATED. COORDINATE EXACT LOCATION AND CONFIGURATION WITH LOCAL VAMC RM. MATCH EXISTING TELECOMMUNICATIONS ROOM STANDARDS.
 - PROVIDE NEW 100 PAIR 110 BLOCKS WITH LESS QUANTITY AS REQUIRED FOR TERMINATION OF TCO VOICE CABLES. MATCH EXISTING TELECOMMUNICATION ROOM STANDARDS. PROVIDE JUMPER TROUGH BETWEEN 110 BLOCKS. COORDINATE EXACT LOCATION WITH LOCAL VAMC RM.



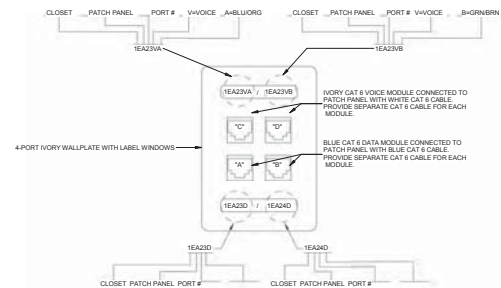
TELECOMMUNICATION GROUND BAR DETAIL
NOT TO SCALE



TELECOMMUNICATION CABLE TRAY DETAIL
NOT TO SCALE



TELECOMMUNICATION OUTLET BACKBOX,
CONDUIT AND CABLE TRAY DETAIL
NOT TO SCALE

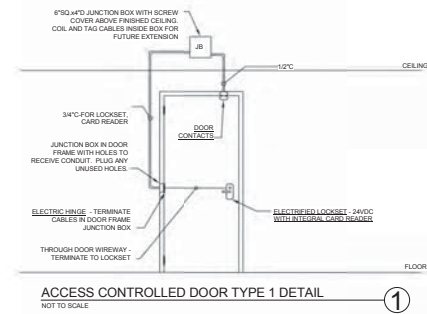
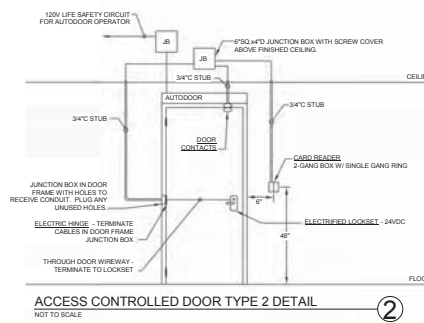
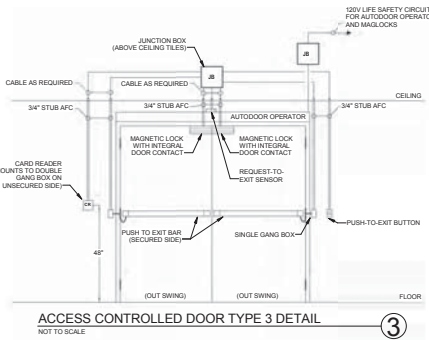


- GENERAL NOTES:**
- PROVIDE 4-PORT WALLPLATE FOR WALL TELEPHONE OUTLET "W" AND ROLL BACK UNTERMINATED DATA CABLES IN JUNCTION BOX.
 - COORDINATE LABELING SEQUENCE AND FORMAT WITH VA RM.

TELECOMMUNICATION OUTLET (TCO) DETAIL
NOT TO SCALE

CONSTRUCTION BID DOCUMENTS FULLY SPRINKLERED

<p>CONSTRUCTION BID DOCUMENTS</p> <p>05/09/2014</p> <p>Revisions</p>	<p>CONSULTANTS:</p> <p>FREDERICK L. REUBEN & SELLER ENGINEERS, INC.</p> <p>2ND FLOOR PLAN</p> <p>KEY PLAN</p>	<p>ARCHITECTS/ENGINEERS:</p> <p>ARCHITECTURAL PROJECT # 18500</p> <p>CBLH</p> <p>7850 Freeway Circle</p> <p>440.243.2000</p> <p>Cleveland, OH 44130</p> <p>440.243.3305</p>	<p>Drawing Title</p> <p>TECHNOLOGY DETAILS</p> <p>Approved: Project Director</p>	<p>Project Title</p> <p>VA Pittsburgh Healthcare System</p> <p>UD, EXPAND MEDICAL AND SURGICAL CLINICS</p> <p>Location</p> <p>UNIVERSITY DRIVE DIVISION</p> <p>Date</p> <p>05/06/2014</p> <p>Checked</p> <p>MPL</p> <p>Drawn</p> <p>TWM</p>	<p>Project Number</p> <p>646-372</p> <p>Building Number</p> <p>Drawing Number</p> <p>T4-1</p> <p>Dept. of</p> <p>Department of Veterans Affairs</p>
--	--	--	--	---	---



CONSTRUCTION BID DOCUMENTS FULLY SPRINKLERED

<p>5/30/2014 7:48:52 AM Z:\V\ Documents\10116 EFM CF_00003.rvt</p> <p>CONSTRUCTION BID DOCUMENTS</p> <p>05/09/2014</p> <p>Date</p>	<p>CONSULTANTS:</p> <p>FREDERICK E. REYNOLDS & SELLER ENGINEERS, INC.</p> <p>2ND FLOOR PLAN</p> <p>KEY PLAN</p>	<p>ARCHITECTS/ENGINEERS:</p> <p>ARCHITECTURAL PROJECT # 18500</p> <p>CBLH</p> <p>Architecture Planning Interior Design</p> <p>7850 Freeway Circle Cleveland, OH 44130</p> <p>440.243.2000 1 440.243.3305 1</p>	<p>Drawing Title</p> <p>TECHNOLOGY DETAILS</p> <p>Approved: Project Director</p>	<p>Project Title</p> <p>VA Pittsburgh Healthcare System UD, EXPAND MEDICAL AND SURGICAL CLINICS</p> <p>Project Number</p> <p>646-372</p> <p>Building Number</p> <p>Location</p> <p>UNIVERSITY DRIVE DIVISION</p> <p>Date</p> <p>05/06/2014</p> <p>Checked</p> <p>MPL</p> <p>Drawn</p> <p>TWM</p> <p>Drawing Number</p> <p>T4-2</p> <p>Page of</p> <p>Office of Construction and Facilities Management</p> <p>Department of Veterans Affairs</p>
--	---	--	--	---