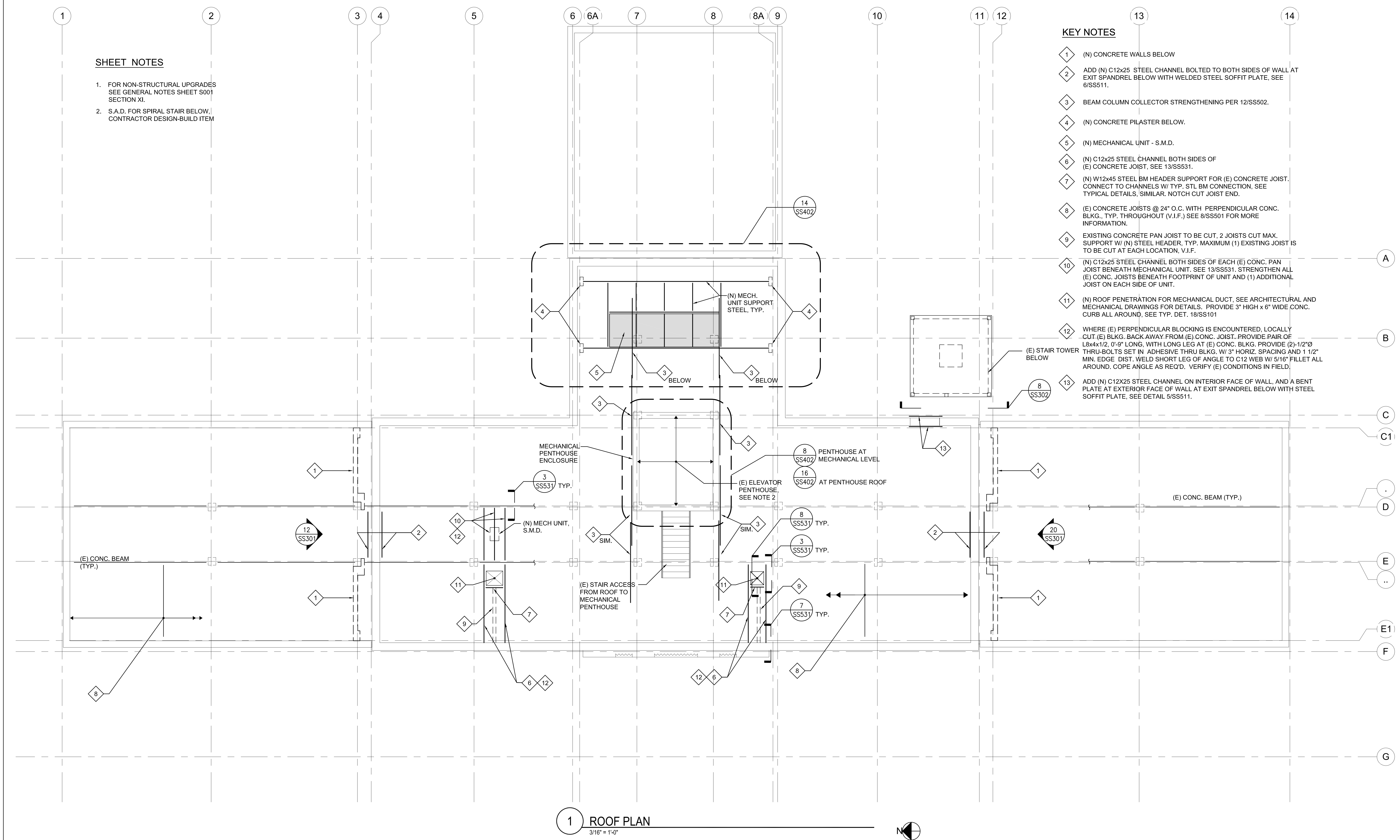




A
B
C
D
E
F

three inches = one foot
one and one half inch = one foot
one inch = one foot
three quarters inch = one foot
one half inch = one foot
three eighths inch = one foot
one quarter inch = one foot
one eighth inch = one foot



SHEET NOTES

- FOR NON-STRUCTURAL UPGRADES SEE GENERAL NOTES SHEET S001 SECTION XI.
- S.A.D. FOR SPIRAL STAIR BELOW CONTRACTOR DESIGN-BUILD ITEM

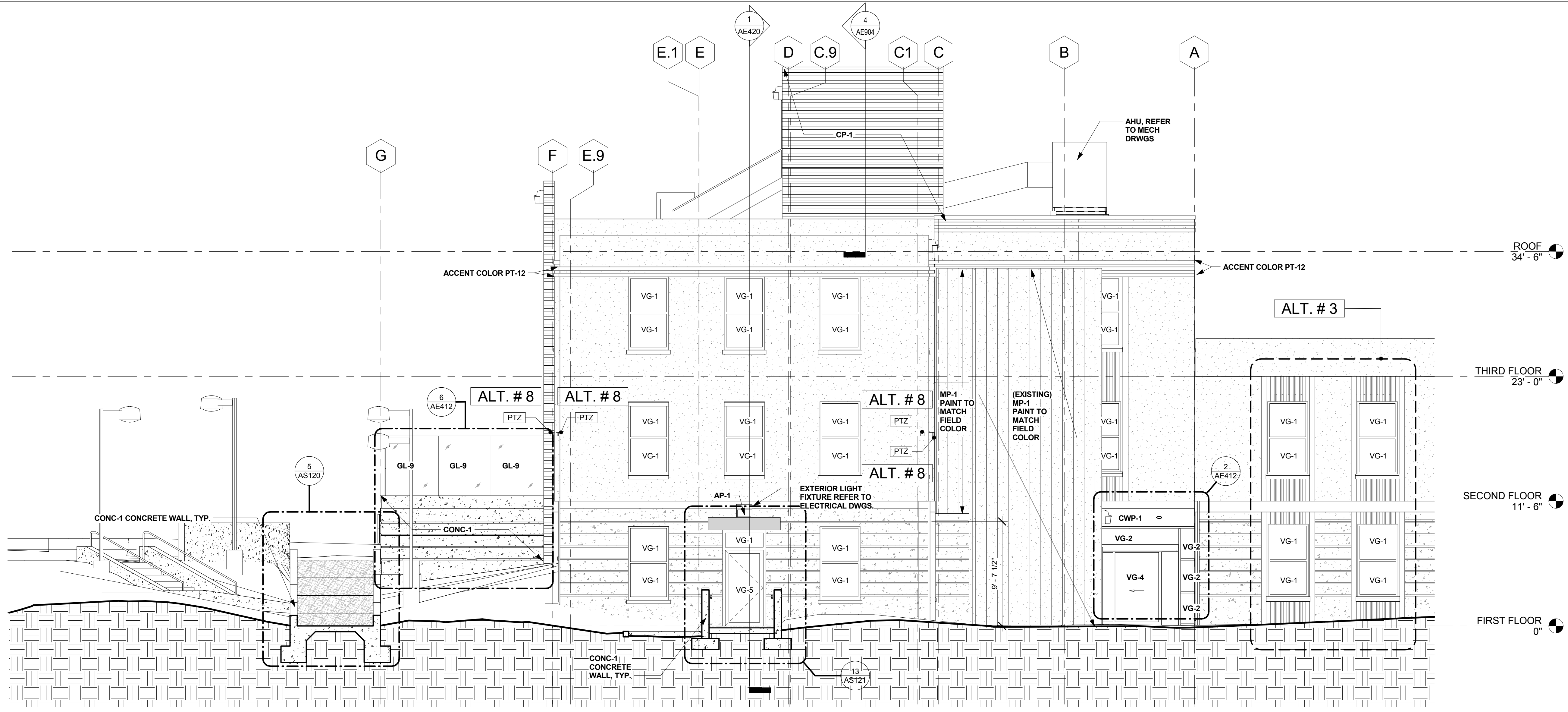
KEY NOTES

- (N) CONCRETE WALLS BELOW
- ADD (N) C12x25 STEEL CHANNEL BOLTED TO BOTH SIDES OF WALL AT EXIT SPANDREL BELOW WITH WELDED STEEL SOFFIT PLATE, SEE 6/SS511.
- BEAM COLUMN COLLECTOR STRENGTHENING PER 12/SS502.
- (N) CONCRETE PLASTER BELOW.
- (N) MECHANICAL UNIT - S.M.D.
- (N) C12x25 STEEL CHANNEL BOTH SIDES OF (E) CONCRETE JOIST, SEE 13/SS531.
- (N) W12x45 STEEL BM HEADER SUPPORT FOR (E) CONCRETE JOIST. CONNECT TO CHANNELS W/ TYP. STL BM CONNECTION, SEE TYPICAL DETAILS, SIMILAR. NOTCH CUT JOIST END.
- (E) CONCRETE JOISTS @ 24" O.C. WITH PERPENDICULAR CONC. BLKG. TYP. THROUGHOUT (V.I.F.) SEE 8/SS501 FOR MORE INFORMATION.
- EXISTING CONCRETE PAN JOIST TO BE CUT, 2 JOISTS CUT MAX. SUPPORT W/ (N) STEEL HEADER, TYP. MAXIMUM (1) EXISTING JOIST IS TO BE CUT AT EACH LOCATION, V.I.F.
- (N) C12x25 STEEL CHANNEL BOTH SIDES OF EACH (E) CONC. PAN JOIST BENEATH MECHANICAL UNIT. SEE 13/SS531. STRENGTHEN ALL (E) CONC. JOISTS BENEATH FOOTPRINT OF UNIT AND (1) ADDITIONAL JOIST ON EACH SIDE OF UNIT.
- (N) ROOF PENETRATION FOR MECHANICAL DUCT, SEE ARCHITECTURAL AND MECHANICAL DRAWINGS FOR DETAILS. PROVIDE 3" HIGH x 6" WIDE CONC. CURB ALL AROUND, SEE TYP. DET. 18/SS101
- WHERE (E) PERPENDICULAR BLOCKING IS ENCOUNTERED, LOCALLY CUT (E) BLKG. BACK AWAY FROM (E) CONC. JOIST. PROVIDE PAIR OF L8x4x1/2, 0'-9" LONG, WITH LONG LEG AT (E) CONC. BLKG. PROVIDE (2)-1/2"Ø THRU-BOLTS SET IN ADHESIVE THRU BLKG. W/ 3" HORIZ. SPACING AND 1 1/2" MIN. EDGE DIST. WELD SHORT LEG OF ANGLE TO C12 WEB W/ 5/16" FILLET ALL AROUND. COPE ANGLE AS REQ'D. VERIFY (E) CONDITIONS IN FIELD.
- ADD (N) C12x25 STEEL CHANNEL ON INTERIOR FACE OF WALL, AND A BENT PLATE AT EXTERIOR FACE OF WALL AT EXIT SPANDREL BELOW WITH STEEL SOFFIT PLATE, SEE DETAIL 5/SS511.

1 ROOF PLAN
3/16" = 1'-0"

Revisions	Consultants	Reviewing Agency - Fire Protection	Architects/Engineers	Drawing Title ROOF PLAN Scale AS NOTED Approved Project Director	Project Title VA SIERRA NEVADA HEALTHCARE SYSTEM BLDG 1A SEISMIC CORRECTIONS Project No. RBB #1013700 VA Contract No. VA261-P-088			VA Project No. 654-336	Office of Construction and Facilities Management						
	Degenkolb				AON		Location 975 KIRMAN AVE., RENO, NEVADA 89502			Building No. 1A					
	DEGENKOLB ENGINEERS 235 Montgomery Street, Suite 500 San Francisco, CA 94104 415.392.6952 Phone 415.361.3157 Fax www.degenkolb.com B0584008.00				AON Risk Solutions Global Risk Consulting Fire Protection Engineering 1770 Montgomery Plaza Court, Suite 110 San Diego, CA 92128 +1 619 471 3545 +1 619 471 3546 aonfire.com Project 2010114 Fire Protection Code Risk Life Safety Security Consulting		RBB ARCHITECTS INC 10980 Wilshire Boulevard Los Angeles, California 90024-3905 Telephone 310 473 3555 Facsimile 310 473 3555 www.rbbinc.com			917 7th St. 2nd Floor Ste. 3 Sacramento, California 95814 Telephone 310 473 3555 Facsimile 310 473 3555 www.rbbinc.com		Date 06/08/2012	Checked WG	Drawn MM	Drawing No. SF214
	Date				Date		Date			Date		Date		Date	

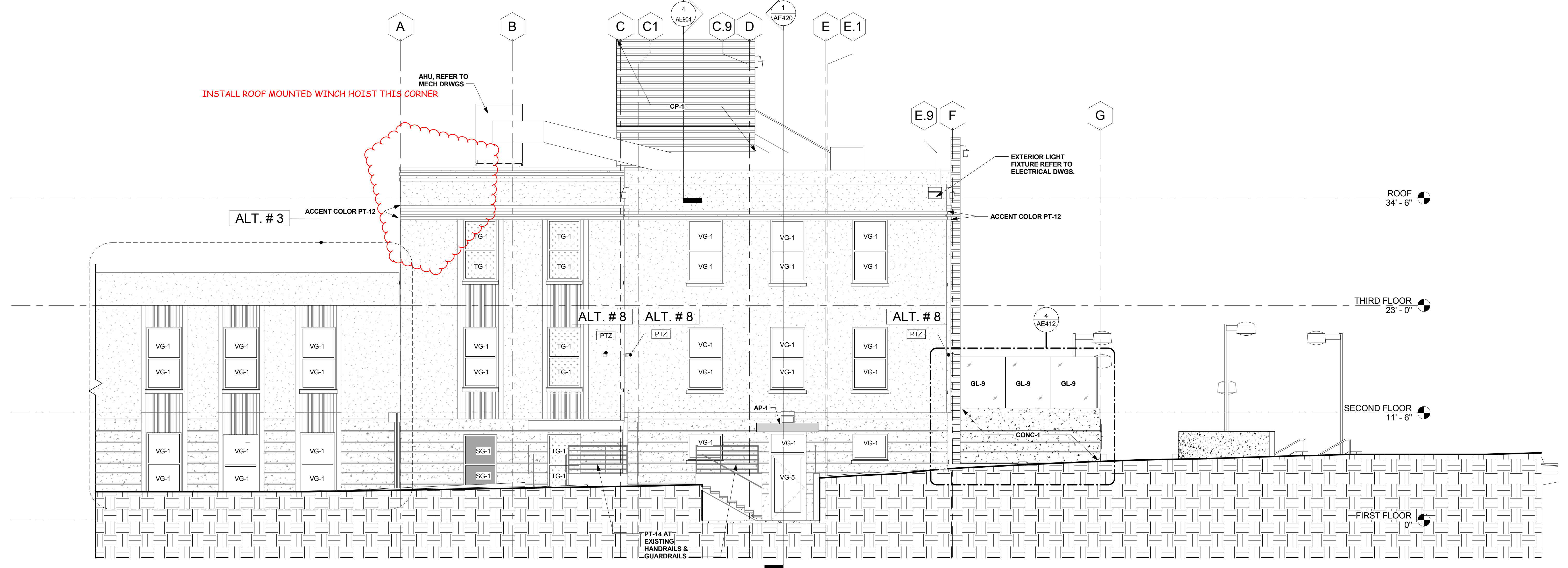
three inches = one foot
one and one half inch = one foot
one inch = one foot
three quarters inch = one foot
one half inch = one foot
three eighths inch = one foot
one quarter inch = one foot
one eighth inch = one foot



- EXTERIOR PAINT PER SPEC SECTION 09 91 00**
- PT-11 CUSTOM FIELD COLOR TO FIELD MATCH EXISTING
 - PT-12 CUSTOM ACCENT COLOR TO FIELD MATCH EXISTING
 - PT-13 CUSTOM ACCENT COLOR TO FIELD MATCH EXISTING
 - PT-14 CUSTOM COLOR TO FIELD MATCH EXISTING HANDRAIL
- GLAZING PER SPEC SECTION 08 80 00**
- VG-1 VISION GLASS -1\"/>

- GENERAL NOTE:**
- ALL CONCRETE SURFACES TO RECEIVE NEW PAINT U.O.N., REFER TO DEMO PLANS FOR BEADBLASTING CONCRETE
 - ALL EXISTING METAL HANDRAILS/GUARDRAILS TO REMAIN, TO BE PAINTED U.O.N.
 - ALL EXISTING H.M. DOORS/FRAMES TO REMAIN, TO BE PAINTED U.O.N.

SOUTH ELEVATION 3/16" = 1'-0" 1



NORTH ELEVATION 3/16" = 1'-0" 2

Revisions	Date	Consultants COLLABORATIVE DESIGN STUDIO architecture of experience and place www.collaborativedesignstudio.com T 775.348.7777 F 775.348.0904 9444 DOUBLE R BLVD SUITE B RENO NV 89521	Reviewing Agency - Fire Protection AON Fire Protection Engineering Aon Fire Protection Engineering Corporation 11770 Bernardo Plaza Court Suite 116 San Diego, CA 92128 t+1.858.673.5845 f+1.858.673.5849 www.aonfire.com Fire Protection Code Risk Life Safety Security	Architects/Engineers RBB ARCHITECTS INC 10980 Wilshire Boulevard Los Angeles, California 90024-3905 Telephone 310 473 3555 Facsimile 310 473 3555 www.rbbinc.com 917 7th St. 2nd Floor Ste. 3 Sacramento, California 95814 Telephone 310 473 3555 Facsimile 310 473 3555 www.rbbinc.com	Drawing Title BUILDING ELEVATIONS - NORTH & SOUTH Scale As indicated Approved Project Director	Project Title VA SIERRA NEVADA HEALTHCARE SYSTEM BLDG 1A - SEISMIC CORRECTIONS Project No. RBB #1013700 VA Contract No. VA261-P-088 Location 975 KIRMAN AVE., RENO, NEVADA 89502 Date 05/01/2012 Checked RP Drawn MK/RP	VA Project No. 654-336 Building No. 1A Drawing No. AE410	Office of Construction and Facilities Management Department of Veteran Affairs
------------------	-------------	---	--	--	---	--	--	--

BID DOCUMENTS

