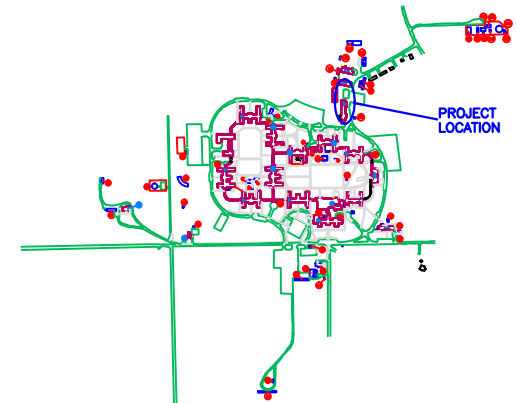
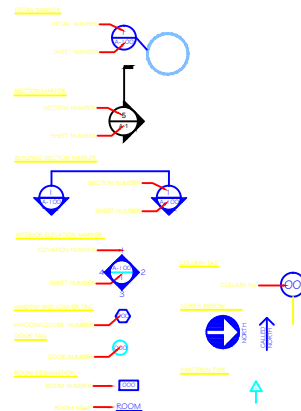


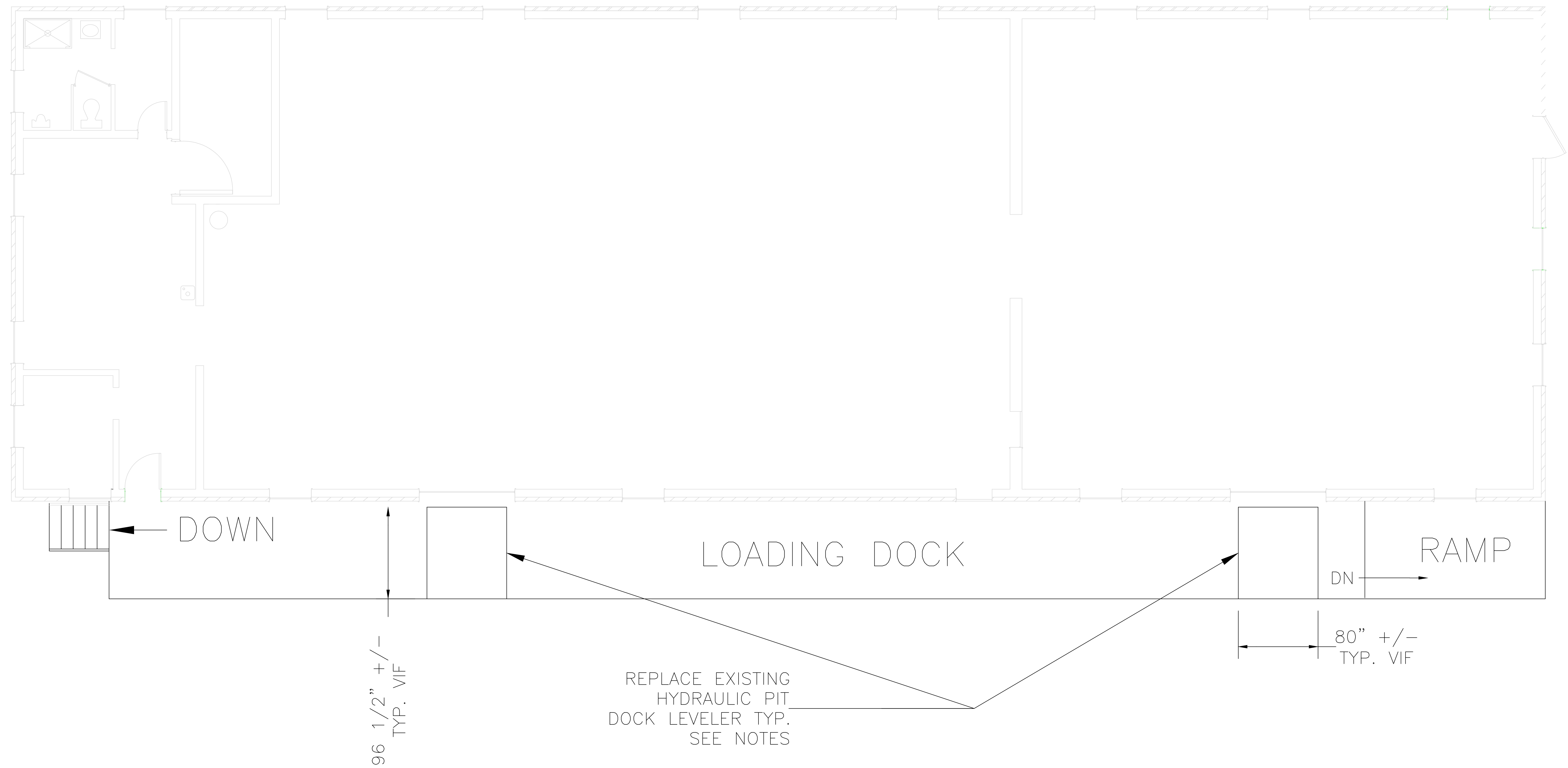


V.A. MEDICAL CENTER

CANANDAIGUA, NEW YORK 14424

<u>SYMBOL</u>	<u>SHEET</u>	<u>TITLE</u>
T-1	1 OF 4	COVER SHEET
L-1	2 OF 4	LAUNDRY LEVELS
L-2	3 OF 4	WAREHOUSE LEVELS
D-1	4 OF 4	LEVELER DETAILS

[illegible][illegible]



1
L1

BUILDING 11 DOCK LEVELERS

SCALE: 3/32" = 1'-0"

NOTES

- CONTRACTOR SHALL DISCONNECT EXISTING DOCK LEVELER FROM UTILITIES, DETACH FROM STRUCTURE, AND REMOVE FROM THE SITE AND DISPOSE OF IT.
- PROVIDE REPAIRS TO EXISTING PIT AS SHOWN ON DETAIL 1/D1
- CONTRACTOR SHALL PROVIDE AND INSTALL A NEW DOCK LEVELER THAT
 - FITS EXISTING PIT WITH REQUIRED TOLERANCES (SEE SPEC).
 - IS CAPABLE OF A LOAD EQUIVALENT AS SPECIFIED.
 - WORKS WITH EXISTING UTILITIES AT THE SITE.
- CONTRACTOR SHALL PROVIDE A COMPLETE INSTALLATION, INCLUDING ALL CONNECTIONS TO THE EXISTING STRUCTURE AND UTILITIES TO PROVIDE A LEVEL, FUNCTIONING DOCK LEVELER.
- EXIST. PITS ARE 24 INCHES DEEP +/-, CONTRACTOR VIF.

		Drawing Title BUILDING 11 DOCK LEVELERS		Project Title REPLACE DOCK LEVELER AT WAREHOUSE/LAUNDRY		Date 4/16/2014	V.A.		
		Approved: Chief Engineer		Date	Building No. CAMPUS	Checked JY		Drawn JY	Project No. 528A5-14-516
		Approved: Medical Center Director		Date	Location CANANDAIGUA, NEW YORK			L1 Dwg. 2 Of 4	
Revisions	Date								

AV



1

L2

BUILDING 10 DOCK LEVELERS

SCALE: 3/16" = 1'-0"

NOTES

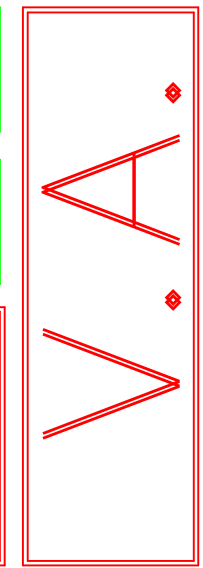
1.
- CONTRACTOR SHALL DISCONNECT EXISTING DOCK LEVELER FROM UTILITIES, DETACH FROM STRUCTURE, AND REMOVE FROM THE SITE AND DISPOSE OF IT.
2.
- PROVIDE REPAIRS TO EXISTING PIT AS SHOWN ON DETAIL 1/D1.
3.
- CONTRACTOR SHALL PROVIDE AND INSTALL A NEW DOCK LEVELER THAT

1. FITS EXISTING PIT WITH REQUIRED TOLERANCES (SEE SPEC).

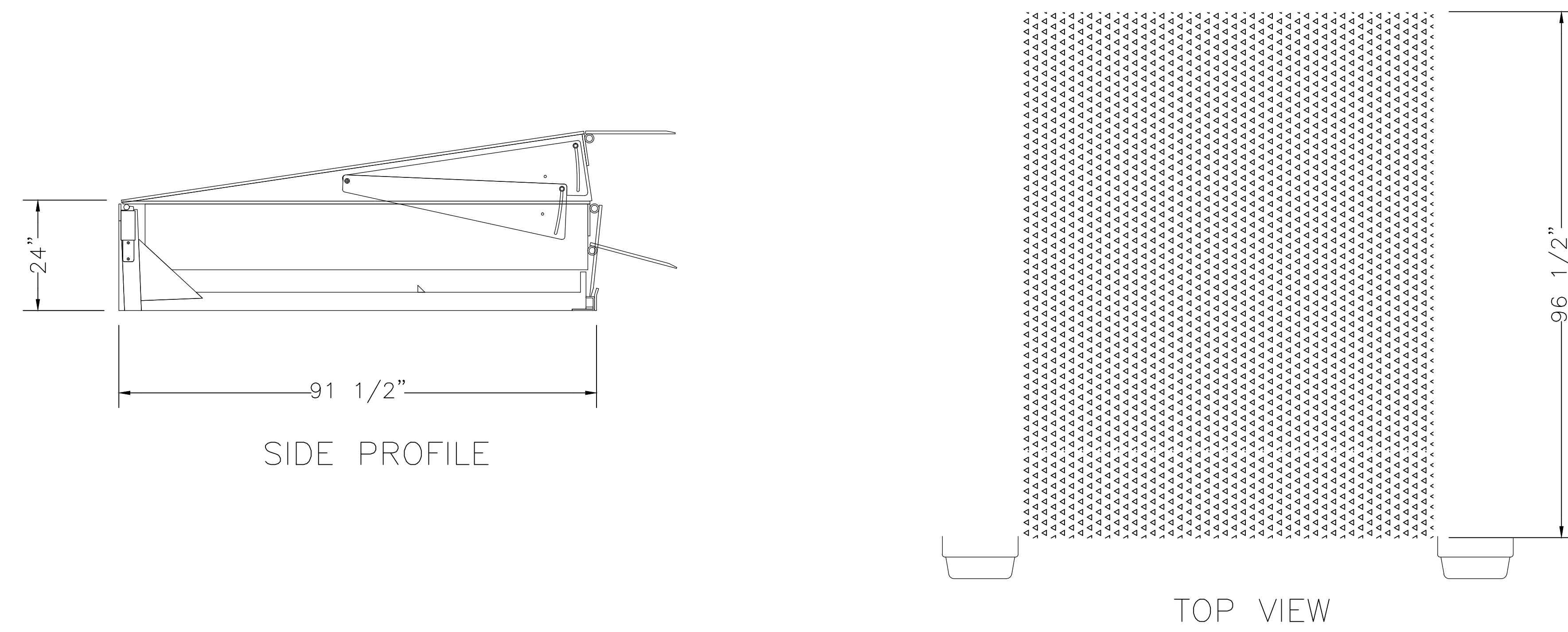
2. IS CAPABLE OF A LOAD EQUIVALENT AS SPECIFIED.

3. WORKS WITH EXISTING UTILITIES AT THE SITE.
4.
- CONTRACTOR SHALL PROVIDE A COMPLETE INSTALLATION, INCLUDING ALL CONNECTIONS TO THE EXISTING STRUCTURE AND UTILITIES TO PROVIDE A LEVEL, FUNCTIONING DOCK LEVELER.
5.
- EXIST. PITS ARE APPROX. 24 INCHES DEEP +/-, CONTRACTOR VIF.

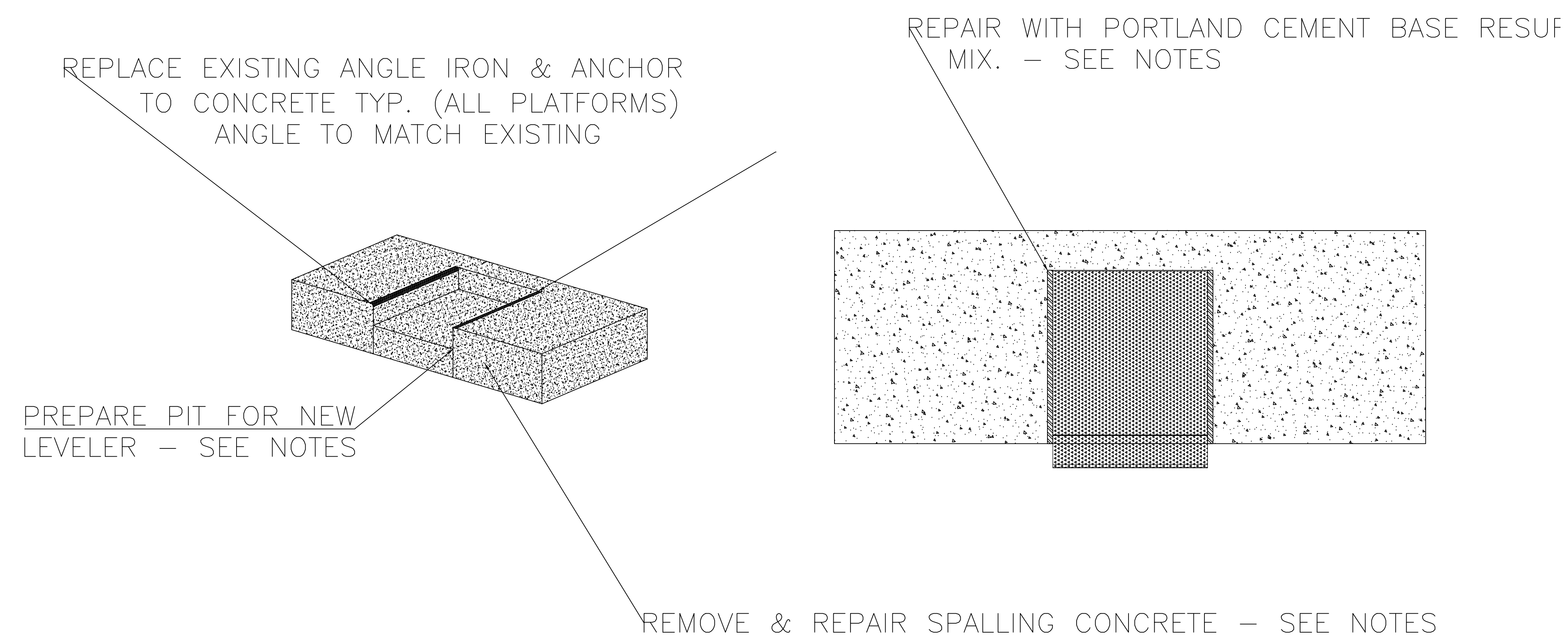
		Drawing Title		Project Title			Date
		BUILDING 11 DOCK LEVELERS		REPLACE DOCK LEVELER AT WAREHOUSE/LAUNDRY			4/16/2014
							Project No.
							528A5-14-516
		Approved: Chief Engineer		Date	Building No.	Checked	Drawn
					CAMPUS	JY	JY
Revisions		Date	Approved: Medical Center Director			Date	Location
							CANANDAIGUA, NEW YORK
						L2	
						Dwg. 3 Of 4	



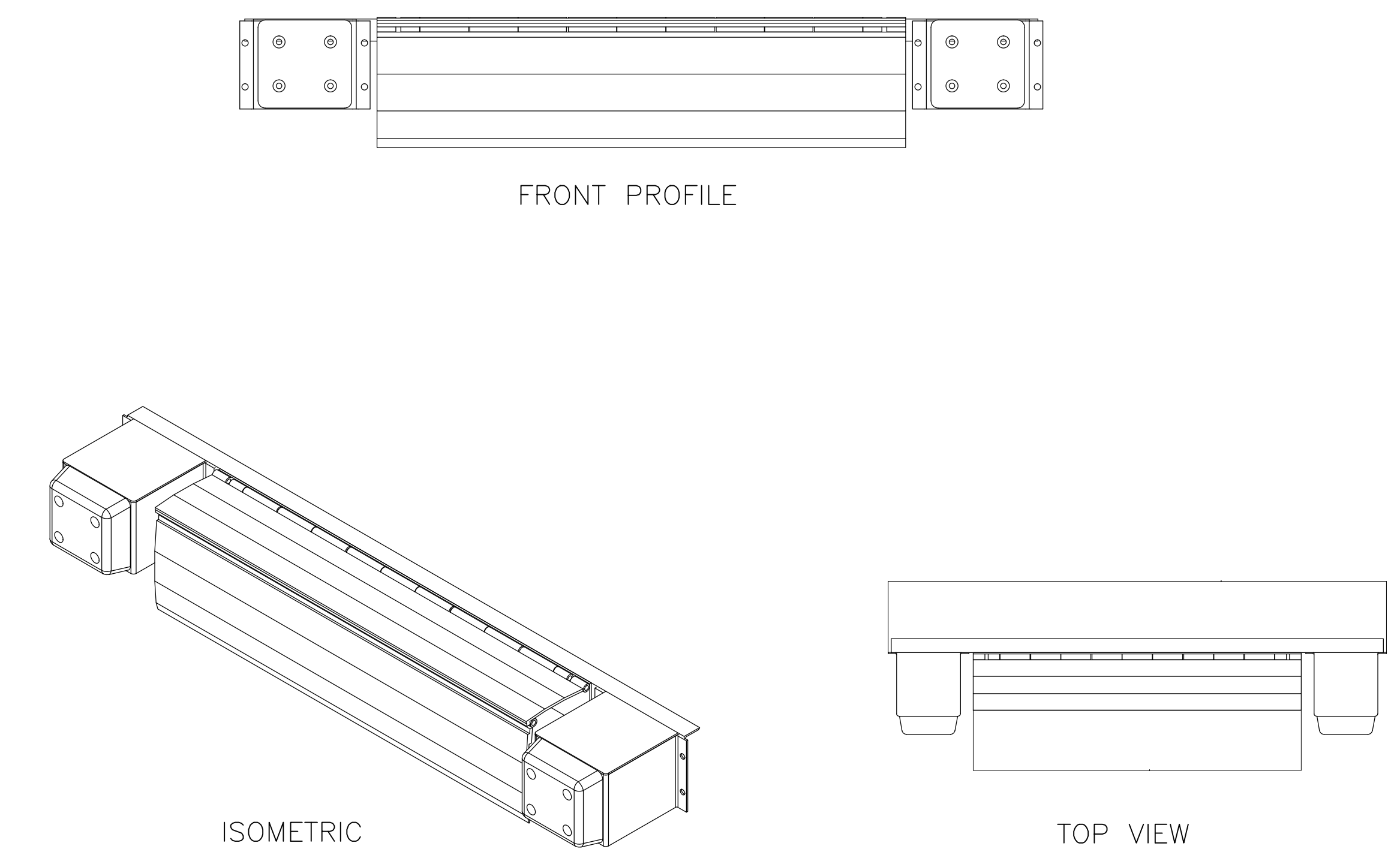
HYDRAULIC PIT DOCK LEVELER



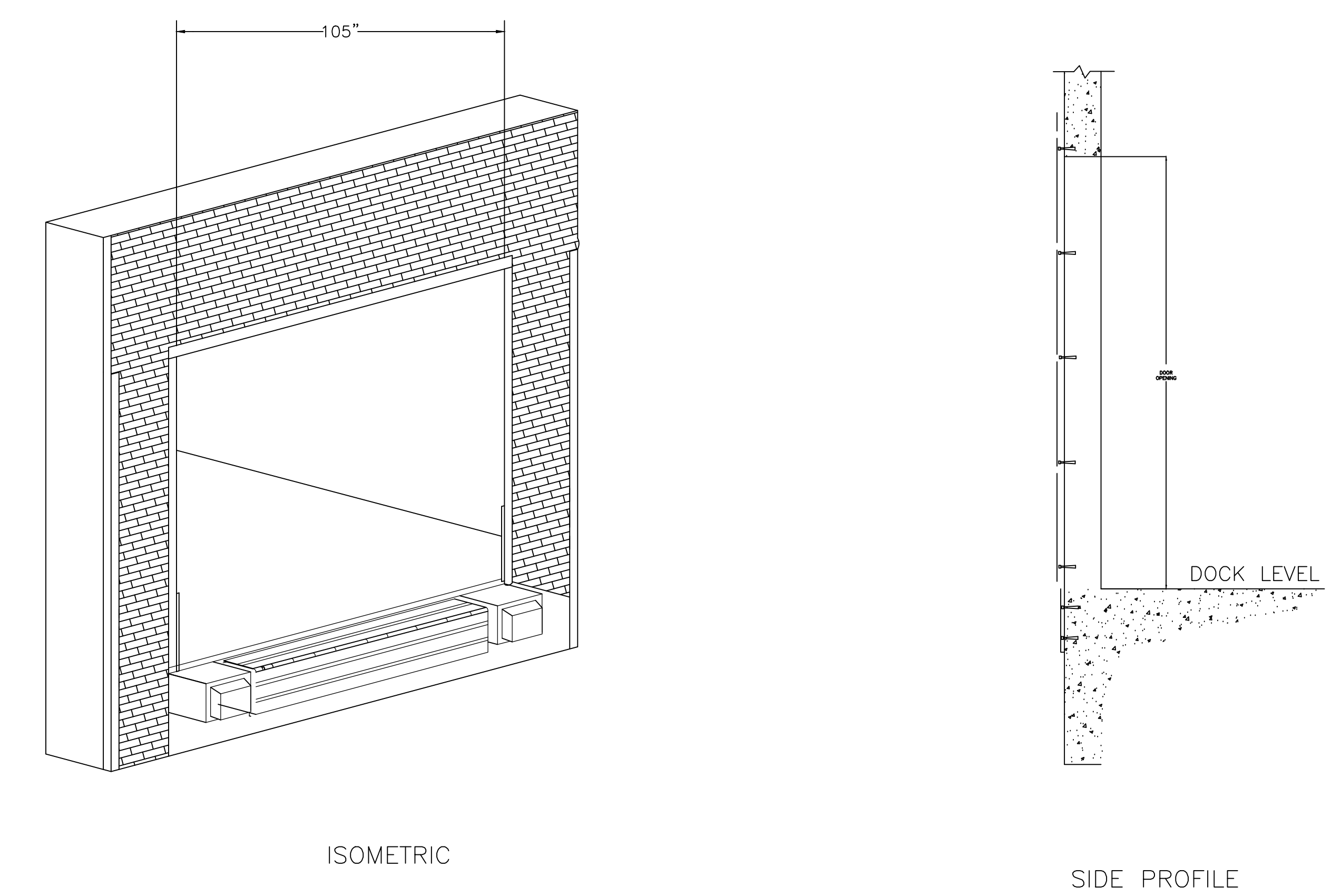
TYPICAL PIT INSTALLATION



MECHANICAL EDGE DOCK LEVELER



TYPICAL EDGE LEVELER INSTALLATION



1 BUILDING 10 DOCK LEVELERS-DETAIL

D1 NTS

NOTES

1. REPAIR AREAS RECEIVING NEW DOCKS PRIOR TO INSTALL, INCLUDING REMOVAL OF SPALLING AND DELAMINATED CONCRETE AND REPAIR. ANY REINFORCING STEEL EXPOSED BY CONCRETE REMOVAL SHALL BE CLEANED TO BARE METAL PRIOR TO CONCRETE REPAIR.
2. ALL MASONRY REPAIRS WILL MATCH EXISTING TEXTURE AND COLOR AND BE SPONGE FINISHED/FREE OF LOOSE MATERIAL,PAINT AND OIL.
3. UNLESS OTHERWISE NOTED ALL EXISTING STRUCTURES WILL BE PATCHED PRIOR TO INSTALL OF NEW LEVELERS. THIS INCLUDES PIT AREA AND CMU/BRICK/CONCRETE AREAS WITHIN 36" OF DOCK.

		Drawing Title BUILDING 11 DOCK LEVELERS		Project Title REPLACE DOCK LEVELER AT WAREHOUSE/LAUNDRY			Date 4/16/2014		
		Approved: Chief Engineer		Date	Building No. CAMPUS	Checked JY	Drawn JY	<div style="border: 2px solid red; padding: 10px; text-align: center;">D1 Dwg. 4 Of 4</div>	
		Approved: Medical Center Director		Date	Location CANANDAIGUA, NEW YORK				
Revisions	Date								