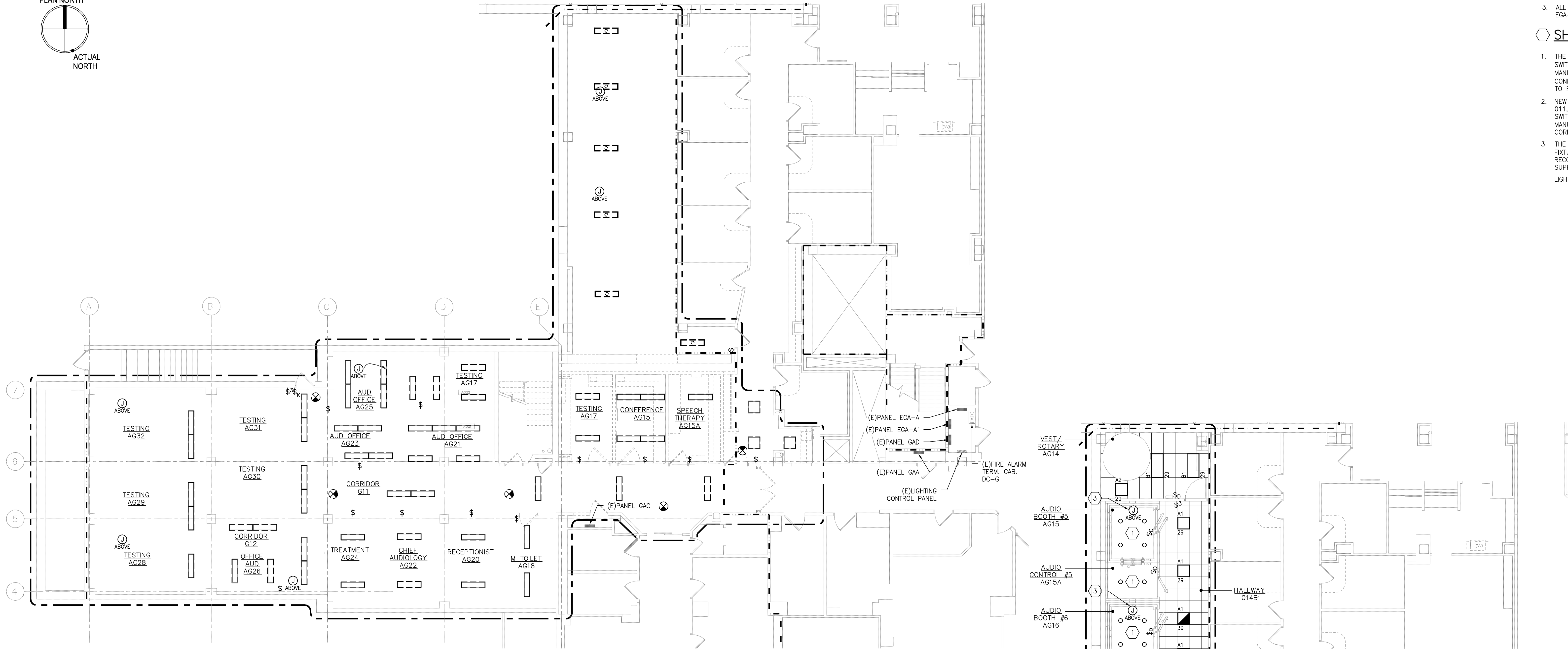
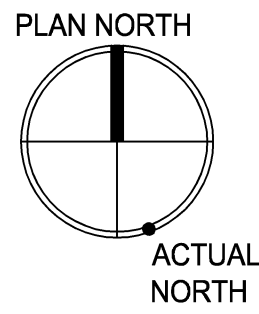
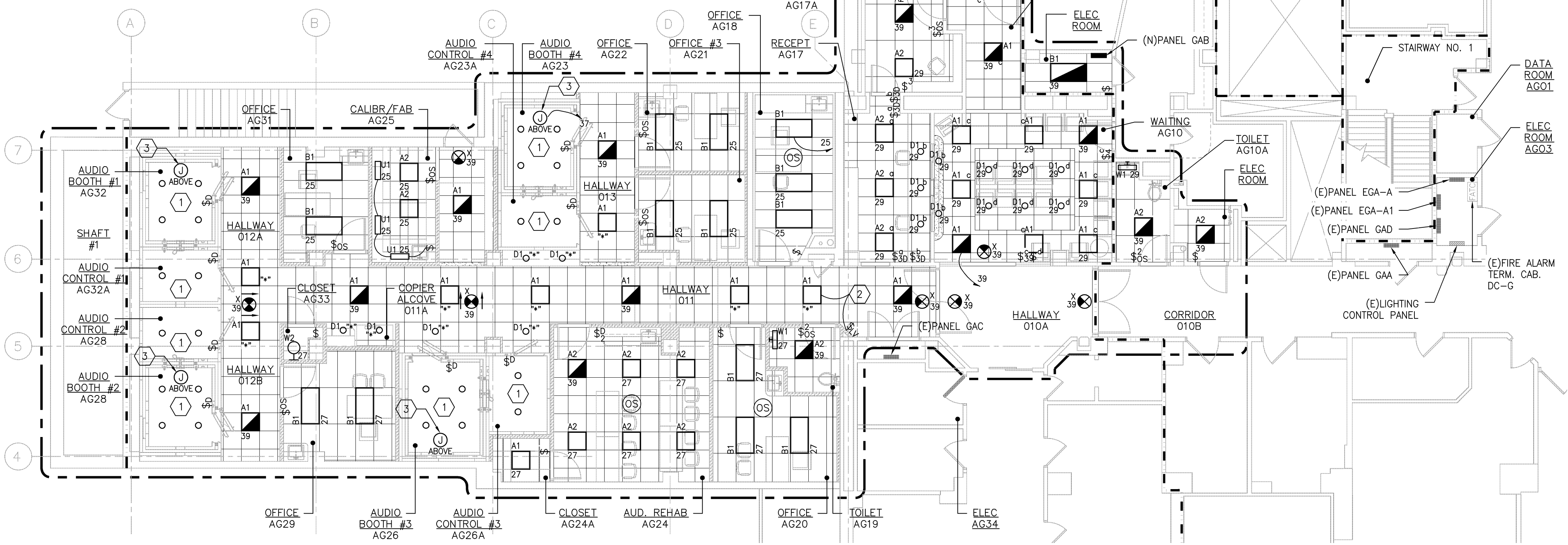


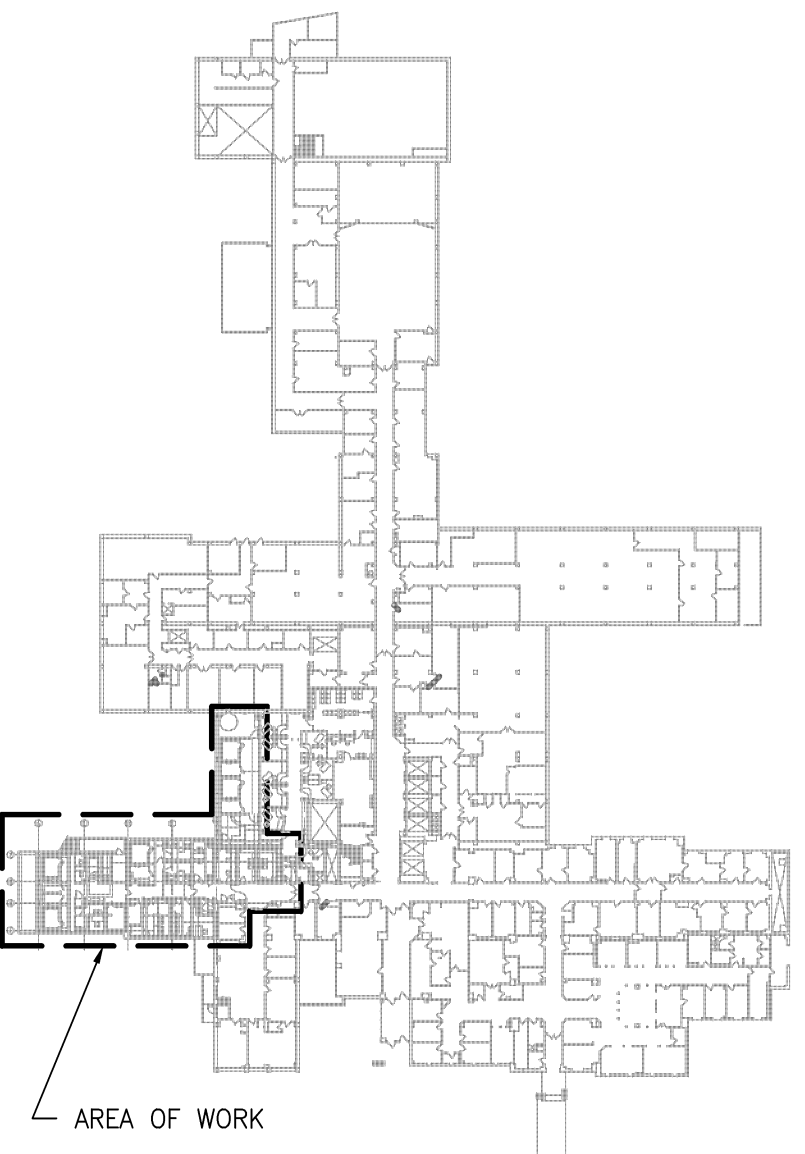
three eighths inch = one foot
one eighth inch = one foot
one quarter inch = one foot
three eighths inch = one foot
one half inch = one foot
three quarters inch = one foot
one inch = one foot
one and one half inches = one foot
two inches = one foot
three inches = one foot
four inches = one foot
five inches = one foot
six inches = one foot
seven inches = one foot
eight inches = one foot
nine inches = one foot
ten inches = one foot
eleven inches = one foot
twelve inches = one foot
thirteen inches = one foot
fourteen inches = one foot
fifteen inches = one foot
sixteen inches = one foot
seventeen inches = one foot
eighteen inches = one foot
nineteen inches = one foot
twenty inches = one foot
twenty one inches = one foot
twenty two inches = one foot
twenty three inches = one foot
twenty four inches = one foot
twenty five inches = one foot
twenty six inches = one foot
twenty seven inches = one foot
twenty eight inches = one foot
twenty nine inches = one foot
thirty inches = one foot
thirty one inches = one foot
thirty two inches = one foot
thirty three inches = one foot
thirty four inches = one foot
thirty five inches = one foot
thirty six inches = one foot
thirty seven inches = one foot
thirty eight inches = one foot
thirty nine inches = one foot
forty inches = one foot
forty one inches = one foot
forty two inches = one foot
forty three inches = one foot
forty four inches = one foot
forty five inches = one foot
forty six inches = one foot
forty seven inches = one foot
forty eight inches = one foot
forty nine inches = one foot
fifty inches = one foot
fifty one inches = one foot
fifty two inches = one foot
fifty three inches = one foot
fifty four inches = one foot
fifty five inches = one foot
fifty six inches = one foot
fifty seven inches = one foot
fifty eight inches = one foot
fifty nine inches = one foot
sixty inches = one foot
sixty one inches = one foot
sixty two inches = one foot
sixty three inches = one foot
sixty four inches = one foot
sixty five inches = one foot
sixty six inches = one foot
sixty seven inches = one foot
sixty eight inches = one foot
sixty nine inches = one foot
seventy inches = one foot
seventy one inches = one foot
seventy two inches = one foot
seventy three inches = one foot
seventy four inches = one foot
seventy five inches = one foot
seventy six inches = one foot
seventy seven inches = one foot
seventy eight inches = one foot
seventy nine inches = one foot
eighty inches = one foot
eighty one inches = one foot
eighty two inches = one foot
eighty three inches = one foot
eighty four inches = one foot
eighty five inches = one foot
eighty six inches = one foot
eighty seven inches = one foot
eighty eight inches = one foot
eighty nine inches = one foot
ninety inches = one foot
ninety one inches = one foot
ninety two inches = one foot
ninety three inches = one foot
ninety four inches = one foot
ninety five inches = one foot
ninety six inches = one foot
ninety seven inches = one foot
ninety eight inches = one foot
ninety nine inches = one foot
one hundred inches = one foot



1 ELECTRICAL LIGHTING DEMOLITION PLAN
SCALE: 1/8" = 1'-0"



2 ELECTRICAL LIGHTING PLAN
SCALE: 1/8" = 1'-0"



KEY PLAN - GROUND FLOOR
SCALE: NONE

- GENERAL SHEET NOTES:**
- SEE DRAWING E-001 AND E-002 FOR GENERAL NOTES, SYMBOLS AND ABBREVIATIONS.
 - ALL NORMAL POWER CIRCUITS SHOWN, U.O.N., SHALL BE CIRCUITED TO PANEL GAB.
 - ALL EMERGENCY POWER CIRCUITS SHOWN, U.O.N., SHALL BE CIRCUITED TO PANEL EGA-A. EMERGENCY FIXTURES ARE SHOWN HALF SHADED.
- SHEET KEYNOTES:**
- THE PREFABRICATED AUDIO BOOTHS ARE TO BE SUPPLIED WITH INTEGRAL LIGHTS, SWITCHES, RECEPTACLES, AND PHONE/DATA OUTLETS. CONTRACTOR SHALL REFER TO MANUFACTURER'S RECOMMENDATIONS AND PROVIDE ALL REQUIRED RACEWAY AND CONDUCTORS TO SUPPLY POWER AND PHONE/DATA TO THE AUDIO BOOTHS. REFER TO EP-101 FOR CIRCUITING.
 - NEW NORMAL POWER LIGHTING FIXTURES, A1 AND D1 WITH "T" IN NEW CORRIDORS 011, 011A, 012A, 012B, AND 013 SHALL BE CIRCUITED TO EXISTING CIRCUIT AND SWITCHING SCHEME SERVING EXISTING LIGHTING IN CORRIDOR 010A. A LOW-VOLTAGE, MANUAL ON/OFF, OVERRIDE SHALL BE PROVIDED FOR FIXTURES IN THE NEW CORRIDORS LISTED ABOVE.
 - THE PREFABRICATED AUDIO BOOTHS ARE TO BE SUPPLIED WITH INTEGRAL LIGHT FIXTURES AND SWITCHES. CONTRACTOR SHALL REFER TO MANUFACTURER'S RECOMMENDATIONS AND PROVIDE ALL REQUIRED RACEWAY AND CONDUCTORS TO SUPPLY AND INSTALL LIGHT FIXTURES TO THE AUDIO BOOTHS. LIGHT BOOTHS WILL BE CONNECTED TO PANEL EGA-A, CIRCUIT 37.

100% CONTRACT DOCUMENTS
FULLY SPRINKLERED

Revisions	Date	 Miller-Remick LLC M.E.P. & Structural Engineering A Service Disabled Veterans Owned Small Business 1010 WIND HIGHWAY SOUTH CHERRY HILL, NEW JERSEY 08034 PHONE: (856) 425-4000 FAX: (856) 425-4002	 GARDNER PLUS ARCHITECTS, PLLC 40 WILDBIRN ROAD ROCHESTER, NEW YORK 14623 TELEPHONE: (585) 321-1210 FACSIMILE: (585) 321-1213 www.gardnerplus.com	MILLER-REMICK CORPORATION PROFESSIONAL ENGINEER THOMAS L. CHAPMAN, P.E. NEW YORK LICENSE NO. 078145-1	Reviewed: Facility Manager	Drawing Title LIGHTING GROUND FLOOR DEMOLITION AND NEW WORK PLANS	Project Title AUDIOLOGY LAB RENOVATION	Date 05-19-2014	Project No. 528A7-13-750	DwG. 37 of 46	 VA HEALTHCARE NETWORK UPSTATE NEW YORK Department of Veterans Affairs	
					Reviewed: Facility Director							Approved: Project Director
					Reviewed:							
					Reviewed:							
Building Number NO. 1		Checked BEAVER	Drawn READ	Drawing No. EL-101								
Location VAMC SYRACUSE, NY												